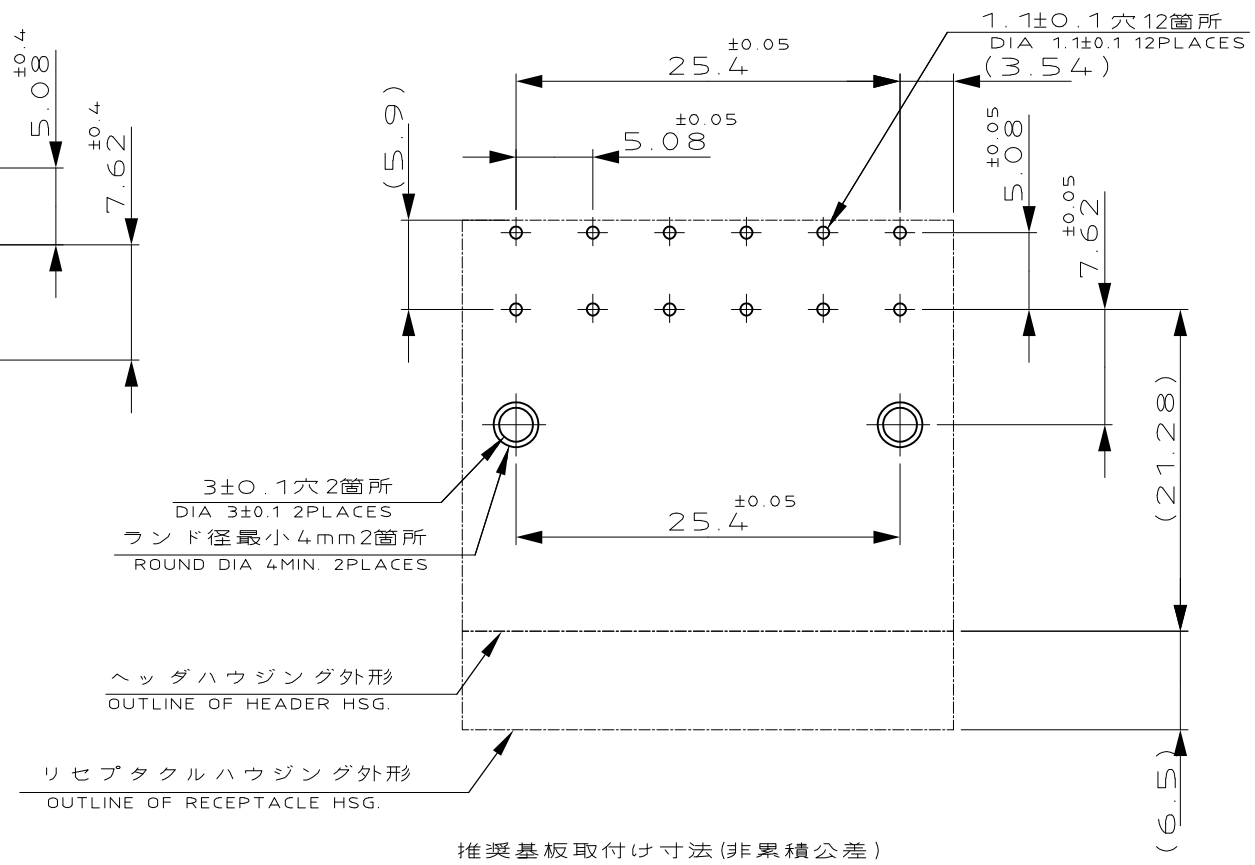
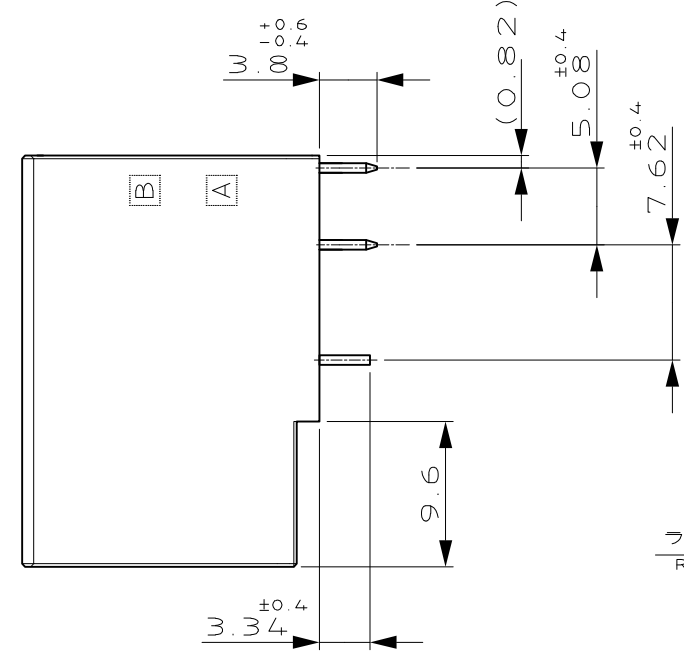
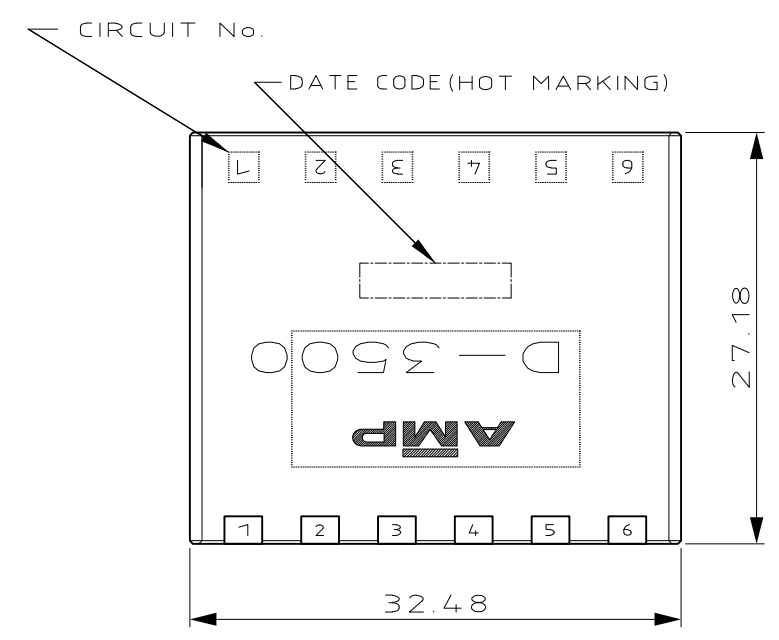
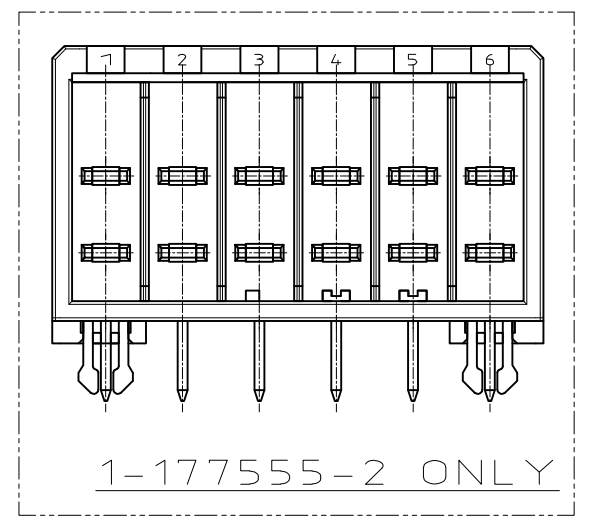
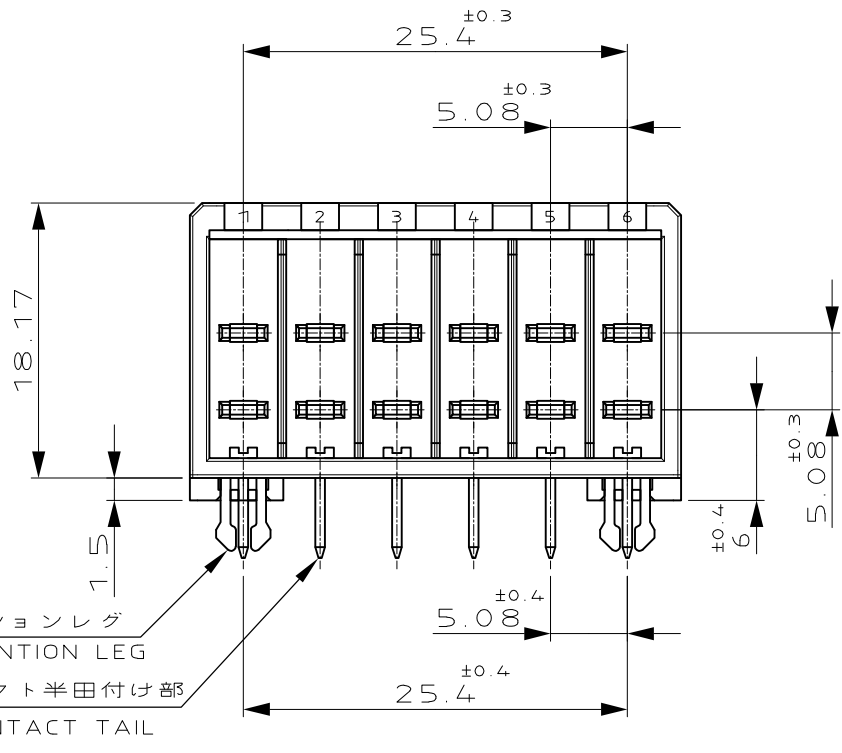


| REVISIONS | | | | | |
|-----------|-----|---------------------------|-----------|-----|------|
| P | LTR | DESCRIPTION | DATE | DWN | APVD |
| E | | REVISED PER ECR-17-002262 | 28FEB2017 | K.T | E.T |



推奨基板取付け寸法 (非累積公差)
 RECOMMEND PC BOARD HOLE (NOT ACCUMULATE TOLERANCE)
 PC BOARD THICKNESS: 1.6 ± 0.1
 基板厚: 1.6 ± 0.1



- 1 材料: 熱可塑性ポリエステル樹脂(ガラス入り)
 色: 黒
 2 製品規格: 108-5349
 3 製品認定報告書: 501-5013
 ▲ 接触部仕上げ: ニッケル下地 0.38 μ m MIN. 金メッキ
 ▲ 接触部仕上げ: ニッケル下地 0.76 μ m MIN. 金メッキ
 ▲ 接触部仕上げ: ニッケル下地 2.0 μ m MIN. 金メッキ
 ▲ レグおよび脚部仕上げ: ニッケル下地半田メッキ
 ▲ レグおよび脚部仕上げ: ニッケル下地スズメッキ
- 1 MATERIAL: GLASS FIELD THERMO PLASTIC, POLYESTER.
 COLOR: BLACK
 2 PRODUCT SPEC: 108-5349
 3 QUALIFICATION TEST REPORT: 501-5013
 ▲ FINISH (CONTACT AREA): 0.38 μ MIN. GOLD PLT. OVER NICKEL.
 ▲ FINISH (CONTACT AREA): 0.76 μ MIN. GOLD PLT. OVER NICKEL.
 ▲ FINISH (CONTACT): 2.0 μ MIN. TIN PLT. OVER NICKEL.
 ▲ FINISH (RETENTION LEG AND CONTACT TAIL): TIN LEAD PLT. OVER NICKEL.
 ▲ FINISH (RETENTION LEG AND CONTACT TAIL): TIN PLT. OVER NICKEL.

| | | |
|--------|-------------|----|
| ⑧ ⑥ | | -5 |
| ⑧ ⑤ | | -3 |
| ⑧ ④ | 177555-2 | |
| ⑧ ④ | 1-177555-2 | |
| FINISH | PART NUMBER | |

| | | | | |
|--|--|---------------------------|--|--|
| THIS DRAWING IS A CONTROLLED DOCUMENT. | | DWN T-YONEBAYASHI 7/7/'92 | TE Connectivity | |
| | | CHK S.MANABE 6/AUG/'92 | | |
| DIMENSIONS: mm | | APVD S.MANABE 6/AUG/'92 | NAME DYNAMIC(D-3500) 12 POS. HDR. ASS'Y | |
| TOLERANCES UNLESS OTHERWISE SPECIFIED: ± 0.3 | | PRODUCT SPEC | SIZE A3 CAGE CODE 00779 DRAWING NO. C-177555 RESTRICTED TO | |
| 0-PLC \pm 1-PLC \pm 2-PLC \pm 3-PLC \pm 4-PLC \pm ANGLES $\pm 3'$ | | APPLICATION SPEC | SCALE 1:2 SHEET 1 OF 1 REV E | |
| MATERIAL SEE NOTE | | WEIGHT - | CUSTOMER DRAWING | |