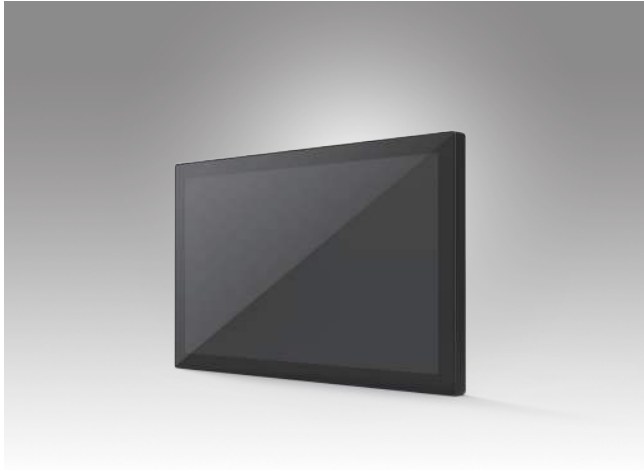


VUE-2101 Series

10.1" Panel Mount Monitor



Features

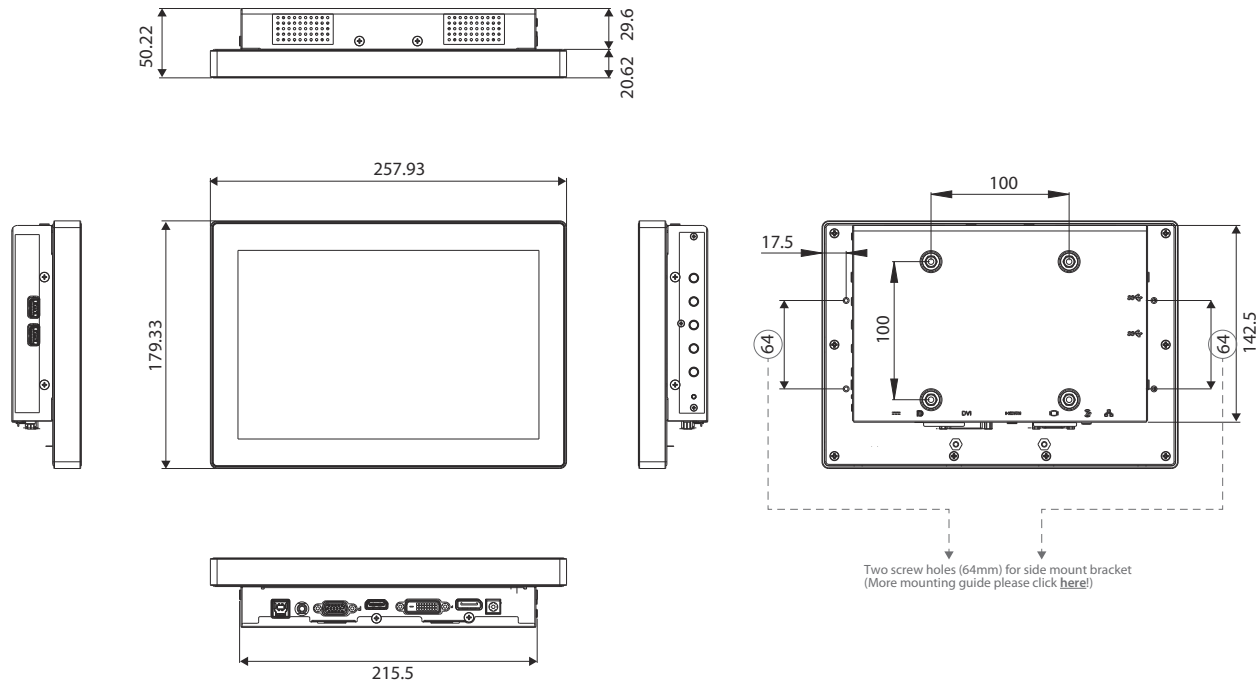
- 10.1" active screen size
 - 6-axis color adjustment (Green/Red/Blue/Cyan/Magenta/Yellow) for high level and more accuracy customized image
 - Full-flat cover glass for extremely simple and elegant surface design
 - Anti-glare (AG) treatment on screen for comfortable viewing experience
 - Built-in multiple I/O interfaces for diverse media connectivity
 - Adopts industrial-grade components for guaranteed performance
 - Mount with multi-way and easy to extend peripheral devices (box PC/camera...)
 - Front IP65 water-proof rating and IK08 high-level impact protection
- (for PCAP touch model)*
- Support 10-point touch function (PCAP technology)
 - Excellent noise immunity well-suited for rugged applications (CS 10V)
 - Support many touch method including fingers, glove, and stylus

Specifications

| Model | | PCAP touch | None touch | |
|--------------------------|---------------------------------|---|-----------------------------|--|
| Brand | | Advantech | | |
| Display | Active Screen Size | 10.1 inch | | |
| | Resolution | 1280 x 800 (WXGA) | | |
| | Brightness | 500 nits | | |
| | Contrast Ratio | 1000:1 (Typ.) | | |
| | Aspect Ratio | 16:10 | | |
| | Viewing Angle | 85° / 85° / 85° / 85° | | |
| | Response Time | 25 ms (Typ.) | | |
| | Backlight Life (hours) | 50,000 (Typ.) | | |
| Touch | Touch Type | Projected Capacitive Touch (PCAP) | N/A | |
| | Touch Function | 10 points | N/A | |
| | Touch Interface | USB | N/A | |
| Connectivity | Video Input | VGA x 1, HDMI x 1, DVI-D x 1, DP x 1 | | |
| | Audio Input | Audio line x 1 | | |
| | Other Slot/Ports | USB3.0 x 2 | | |
| Control | OSD Function | Hot key (ON/OFF, LEFT, RIGHT, MENU, AUTO) | | |
| | OSD Language | English, French, Korea, Portuguese, Russian, Simplified Chinese, Spanish, Traditional Chinese | | |
| Power | Power Type | DC input, 19V Adaptor | | |
| | Power Input | 100-240V _{ac} , 50-60Hz, 1.5A | | |
| | Power Consumption | 15W | | |
| Environment | Operating | Temperature | 0°C- +40°C | |
| | | Humidity | 10% to 85% (non-condensing) | |
| | Storage | Temperature | -20°C- +60°C | |
| | | Humidity | 5% to 80% (non-condensing) | |
| Mechanical Specification | Housing Material | 0.8 mm sheet metal (Black) | | |
| | VESA Compatibility | 100 x 100 mm | | |
| | Dimensions (W x H x D) | Physical | 257.93 x 179.33 x 50.22 mm | |
| | | Packing | 333 x 195 x 245 mm | |
| | Weight | Net | 1.5 Kg | |
| | | Gross | 3.0 Kg | |
| Installation | Mounting on a wall/machine | 100 x 100 mm, VESA grid | | |
| | Mounting with stand/arm | 100 x 100 mm, VESA grid | | |
| | Mounting through bracket | 64 mm, Side mount screw hole | | |
| | Extending PC/camera/peripherals | 64 mm, Side mount screw hole | | |
| Approbation | Certificates | BSMI, CB, CCC, CE, CEC, FCC | | |
| Warranty | | 2-year (1-year for panel) | | |

Dimensions

Unit: mm [inch]



Ordering Information

| Part Number | | Description | Packing List |
|--------------------|--------------------|--|--|
| PCAP touch model | None touch model | | |
| VUE-2101-WX50PA-A4 | VUE-2101-WX50MA-A4 | Advantech 10.1" WXGA Panel Mount Monitor (incl. Japan, Korea, Australia, and Middle East Power Cord) | <ul style="list-style-type: none"> ▪ Power Cord (1.5M, Black) ▪ Power Adaptor (1.5M, Black) ▪ VGA Cable (1.5M, Black) ▪ HDMI Cable (1.5M, Black) ▪ DisplayPort Cable (1.5M, Black) ▪ DVI Cable (1.5M, Black) ▪ USB Cable (1.8M, Black), for touch, PCAP model only ▪ Audio Cable (1.5M, Black) ▪ Side Mount Bracket kit ▪ Startup Manual (Paper) |
| VUE-2101-WX50PC-A4 | VUE-2101-WX50MC-A4 | Advantech 10.1" WXGA Panel Mount Monitor (incl. China Power Cord) | |
| VUE-2101-WX50PX-A4 | VUE-2101-WX50MX-A4 | Advantech 10.1" WXGA Panel Mount Monitor (incl. Europe, Taiwan, UK and US Power Cord) | |

Optional Accessories

| Part Number | Description |
|----------------|--|
| 960T-A15DEE-B0 | Active Stylus Pen for VUE-2000 series, Black |
| 960T-BT-V2K101 | VUE-2101 Bracket kit |