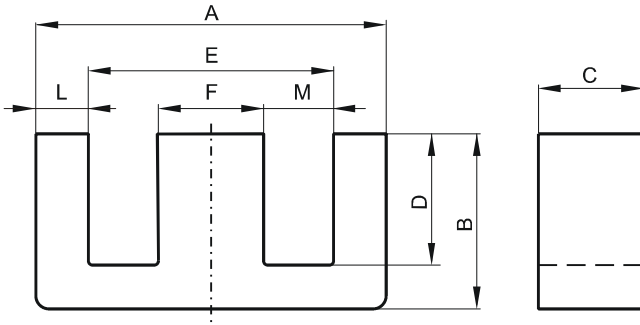


Specification for:

**0P44022EC**

110 Delta Drive  
Pittsburgh, PA 15238  
Phone: 412/696-1333  
Fax: 412/696-0333  
Email: magnetics@spang.com

**DIMENSIONS**



(mm)	Nominal:	Tol. min.:	Tol. max.:
<b>A</b>	43.0	-1.7	0.0
<b>B</b>	21.0	-0.2	+ 0.2
<b>C</b>	20.0	-0.8	0.0
<b>D</b>	14.8	0.0	+ 0.6
<b>E</b>	29.5	0.0	+ 1.4
<b>F</b>	12.2	-0.5	0.0
<b>L</b>	6.75 Nom.		
<b>M</b>	8.65 Nom.		
<b>Eff. Parameters</b>			
<b>Ae mm<sup>2</sup></b>	<b>Amin mm<sup>2</sup></b>	<b>le mm</b>	<b>Ve mm<sup>3</sup></b>
233.0	233.0	97.0	22700

**INDUCTANCE**

AL value (nH)	Test conditions
Nom: 6013 Min.: 4510	10 kHz, < 0.5 mT, 25 °C

**MARKING**

0P44022EC PXXXXX
---------------------

**CORE LOSSES**

P <sub>i</sub> max	Test conditions
128 mW/cm <sup>3</sup> (2.9 W/set)	100 kHz, 100 mT, 100 °C

**NOTE**

Spec. modifications	Previous	Revised
2005-06-22	A=42.2 Min. B=20.9 Min. C=20.0±0.26 D=14.9 Min. E=30.35 Min. F=12.14 Max. L=6.07 Max. L=5.82 MIN, M=9.54±0.25 Losses: General P material	A=41.3 Min. B=20.8 Min. C=20.0 0/-0.8 D=14.8 Min. E=29.5 Min. F=12.2 Max. L=6.75 Ref.  M=8.65 Ref. Losses: Detail as indicated