

CONFIGURATION-O

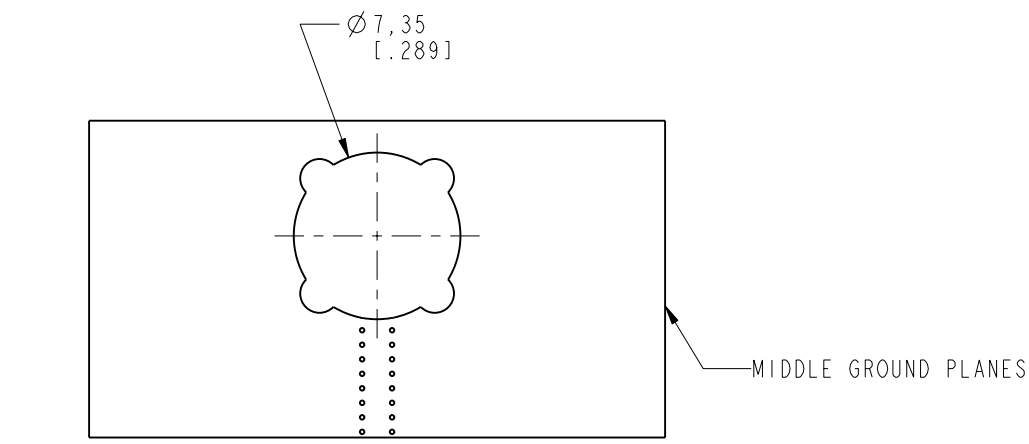
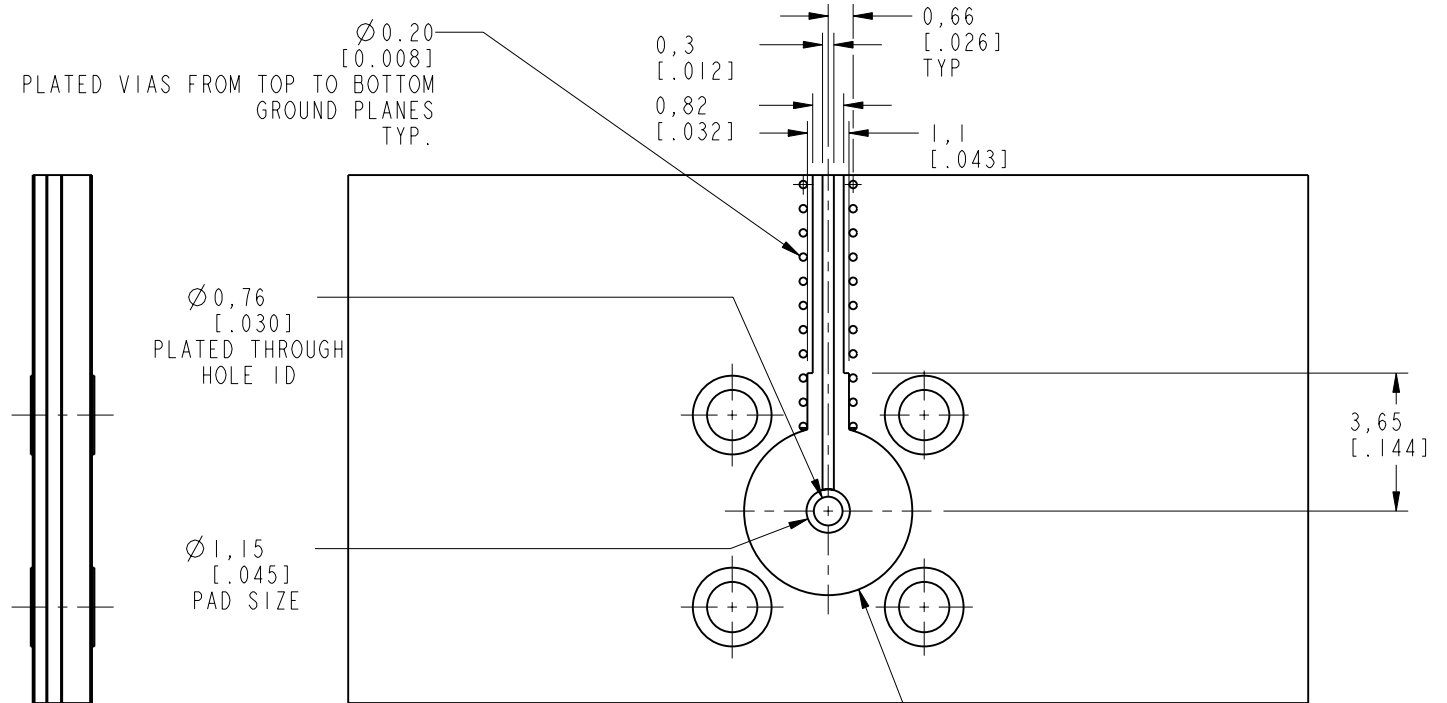
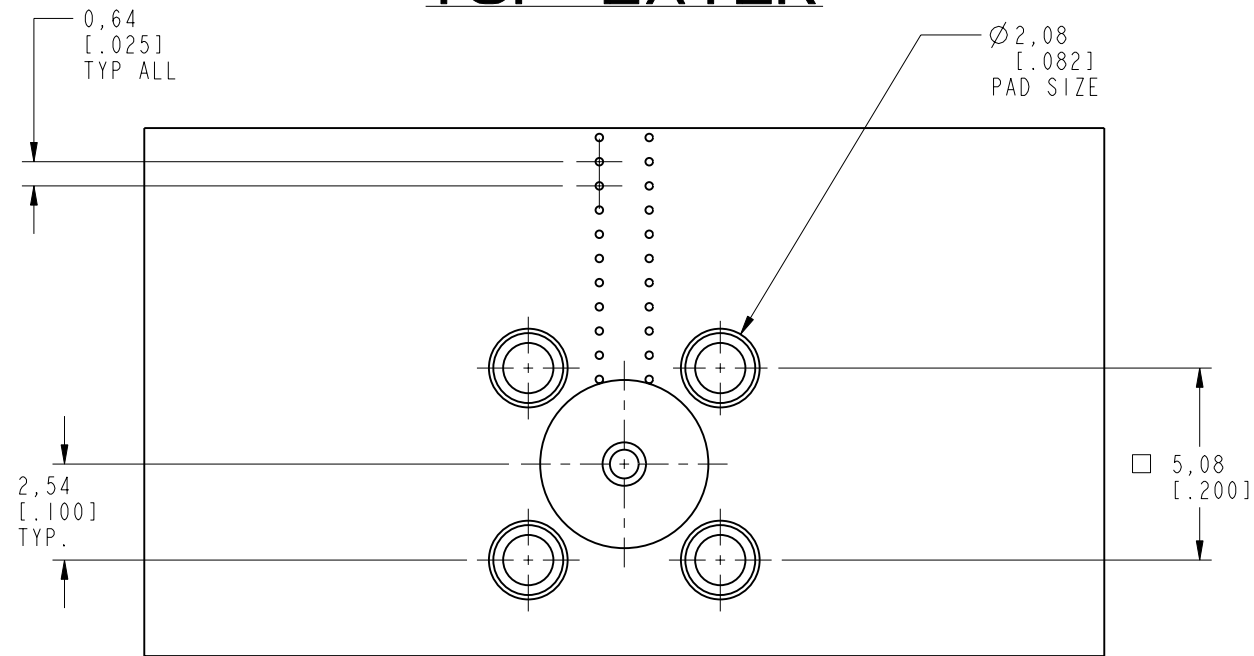
REV	DESCRIPTION	DATE	ECN	APPR
A	RELEASE TO MFG.	03-Mar-16	51040	MJD
C	NO CHANGE TO THIS SHEET	07-Jan-19	10141	SH
D	NO CHANGE TO THIS SHEET	02-Jul-19	12062	SH

RECOMMENDED PCB LAUNCH FOR OPTIMAL RF PERFORMANCE

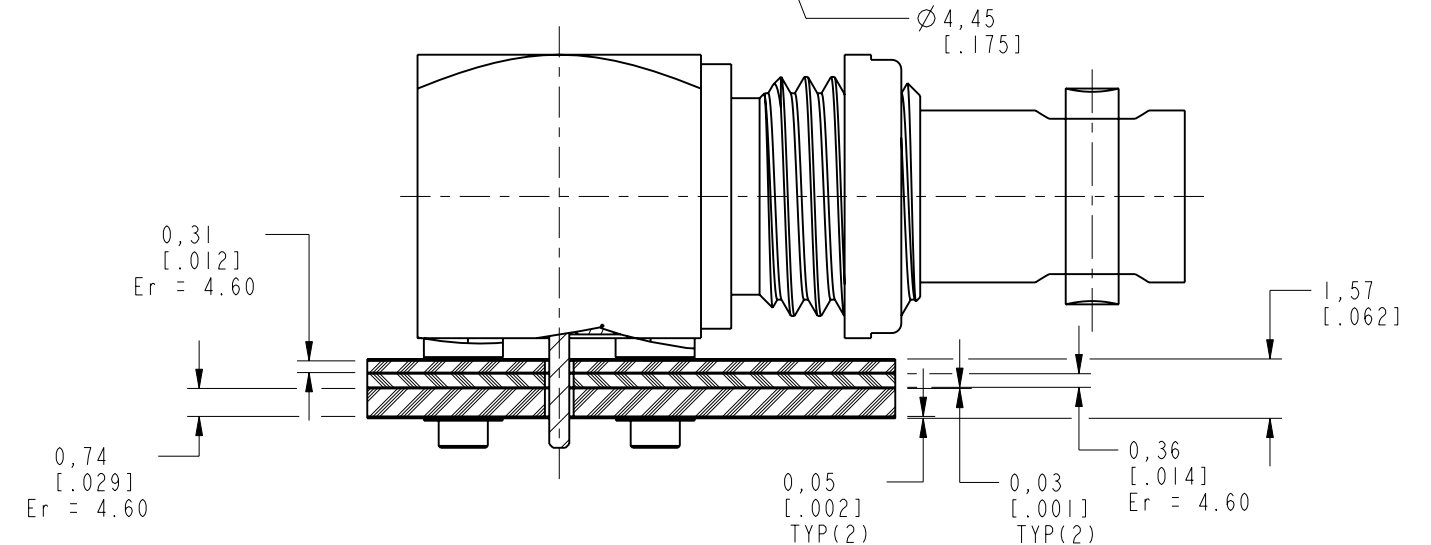
VARIATIONS IN BOARD MATERIAL AND TRACE MAY REQUIRE DIFFERENT GEOMETRY
PLEASE CONTACT AMPHENOL RF FOR LAUNCH OPTIMIZATION

BOTTOM LAYER

TOP LAYER



SCALE 3.000



UNLESS OTHERWISE SPECIFIED, DIMENSIONS ARE IN METRIC AND TOLERANCES ARE:
 <0.5mm ±0.05mm 0.5 - 6mm ±0.1mm 6 - 30mm ±0.2mm 30 - 120mm ±0.3mm ANGLES ±1°

NOTICE - These drawings, specifications, or other data (1) are, and remain the property of Amphenol corp. (2) must be returned upon request; and (3) are confidential and not to be disclosed to any person other than those to whom they are given by Amphenol Corp. the furnishing of these drawings, specifications, or other data by Amphenol Corp., or to any other person to anyone for any purpose is not to be regarded by implication or otherwise in any manner licensing, granting rights to permitting such holder or any other person to manufacture, use or sell any product, process or design, patented or otherwise, that may in any way be related to or disclosed by said drawings, specifications, or other data.

MATERIAL	
REFERENCE	KARTHIK R
EAR#	4028
REF:	
CONFIGURATION LEVEL:	In Work
FINISH	

DRAWN	M. ZHANG	DATE	02-Jul-19
ENGINEER	KARTHIK R	DATE	19-Feb-16
APPROVED	S. HSIEH	DATE	02-Jul-19
CAD FILE			

TITLE	
HD BNC RA BHD JACK PCB MOUNT	
SCALE: 5.0:1.0	SHEET 3 OF 6
DWG SIZE	REV
B	D

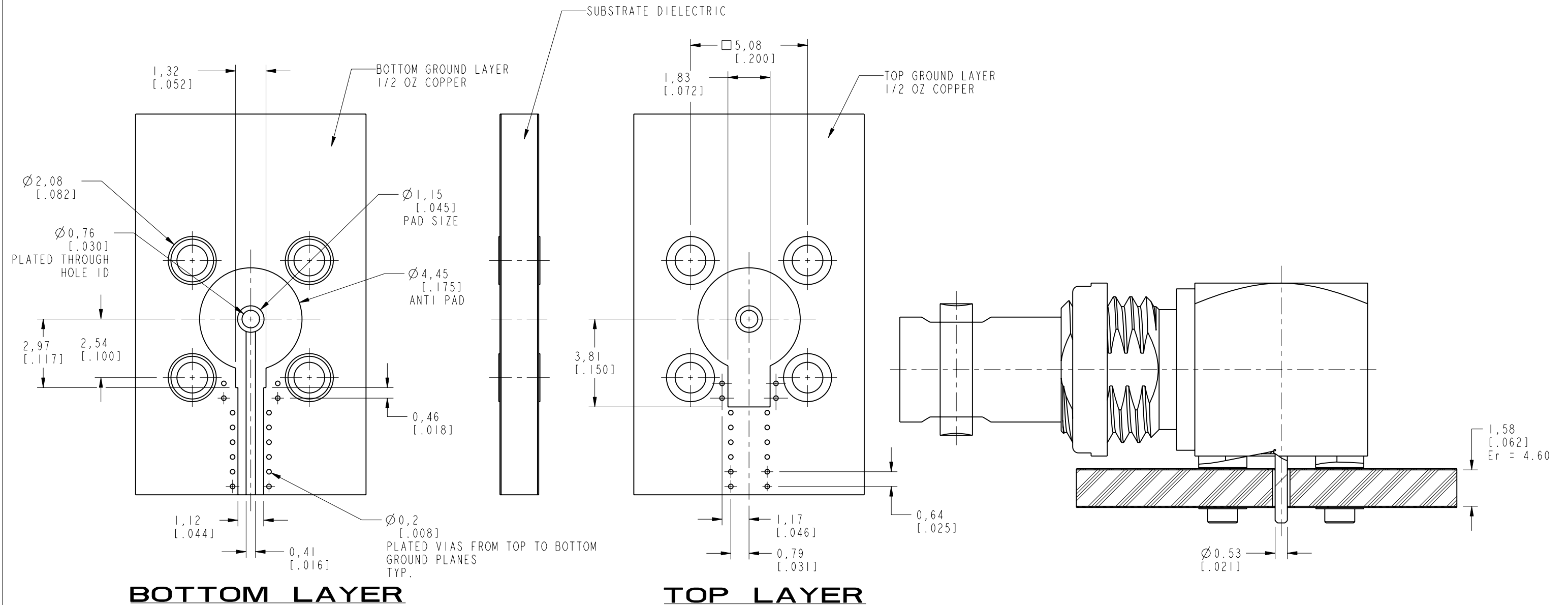
Amphenol RF	
www.amphenolrf.com	
DRAWING NO.	34-1030-12G
ITEM NO.	34-1030-12G
PART NO.	34-1030-12G

REVISIONS				
REV	DESCRIPTION	DATE	ECN	APPR
A	RELEASE TO MFG.	03-Mar-16	51040	MJD
B	ADJUST THE BODY & HOUSING WALL THICKNESS \\RD-DMI6042901S2	06-May-16	--	HHE
C	NO CHANGE TO THIS SHEET	07-Jan-19	10141	SH
D	NO CHANGE TO THIS SHEET	02-Jul-19	12062	SH

CONFIGURATION-1

RECOMMENDED PCB LAUNCH FOR OPTIMAL RF PERFORMANCE

VARIATIONS IN BOARD MATERIAL AND TRACE MAY REQUIRE DIFFERENT GEOMETRY
PLEASE CONTACT AMPHENOL RF FOR LAUNCH OPTIMIZATION



UNLESS OTHERWISE SPECIFIED, DIMENSIONS ARE IN METRIC AND TOLERANCES ARE:
 <0.5mm ±0.05mm 0.5 - 6mm ±0.1mm 6 - 30mm ±0.2mm 30 - 120mm ±0.3mm ANGLES ±1°

NOTICE - These drawings, specifications, or other data (1) are, and remain the property of Amphenol corp. (2) must be returned upon request; and (3) are confidential and not to be disclosed to any person other than those to whom they are given by Amphenol Corp. the furnishing of these drawings, specifications, or other data by Amphenol Corp., or to any other person to anyone for any purpose is not to be regarded by implication or otherwise in any manner licensing, granting rights to permitting such holder or any other person to manufacture, use or sell any product, process or design, patented or otherwise, that may in any way be related to or disclosed by said drawings, specifications, or other data.

MATERIAL	
REFERENCE	
EAR# 4028	
REF:	
CONFIGURATION LEVEL: In Work	
FINISH	

DRAWN	M. ZHANG	DATE	02-Jul-19
ENGINEER	KARTHIK R	DATE	19-Feb-16
APPROVED	S. HSIEH	DATE	02-Jul-19
CAD FILE			

TITLE	
HD BNC RA BHD JACK PCB MOUNT	
SCALE: 6.0:1.0	SHEET 4 OF 6
DWG SIZE	REV
B	D

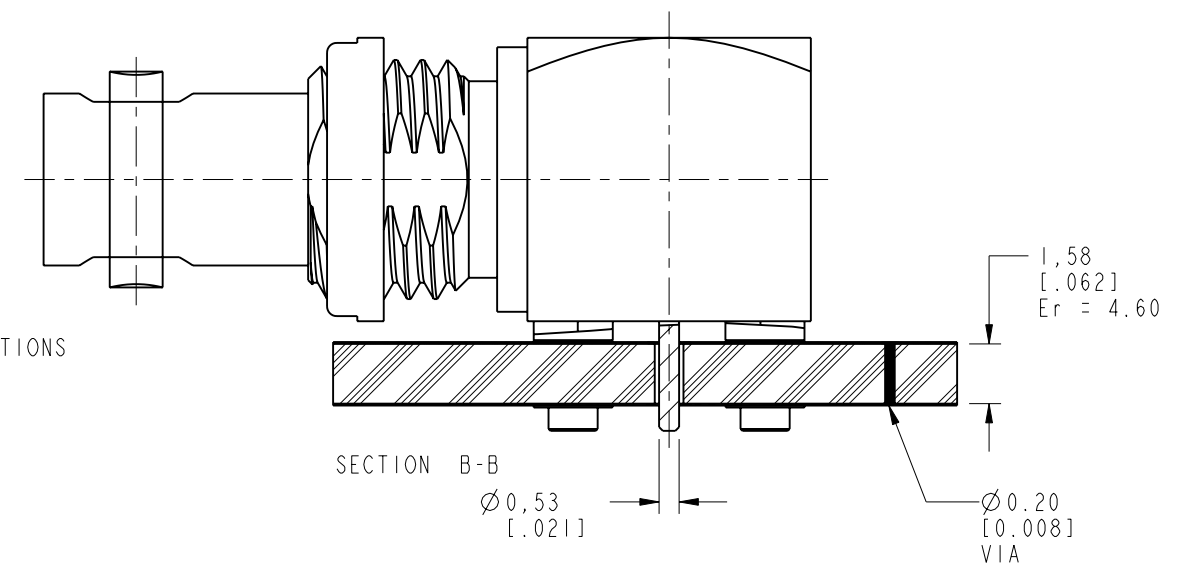
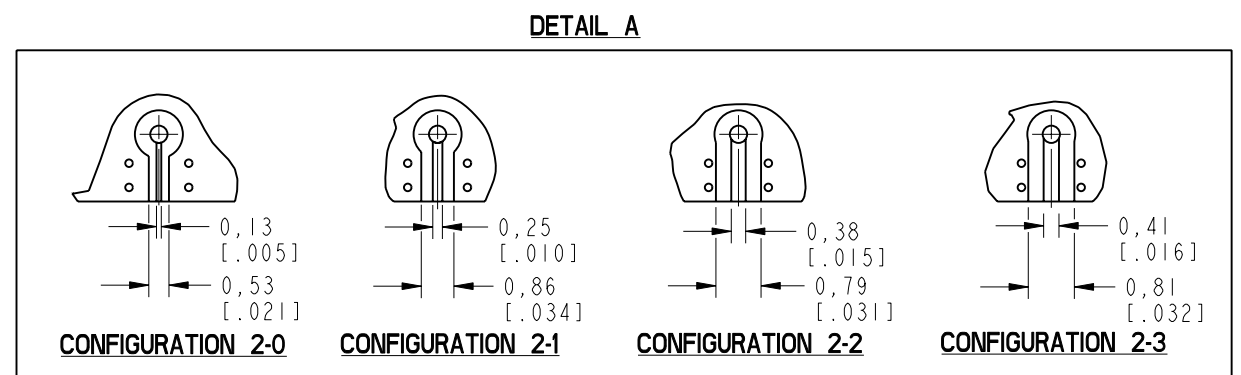
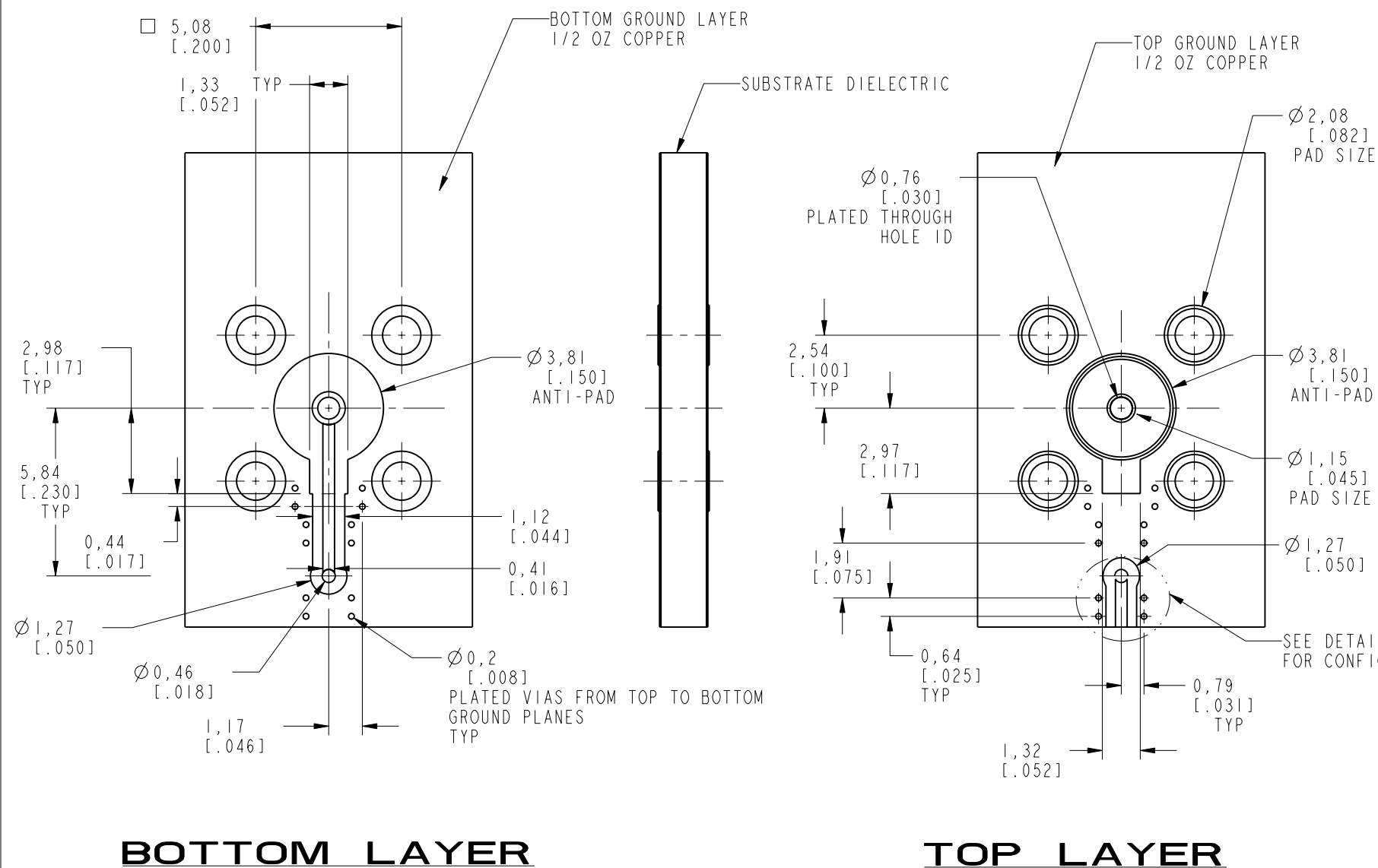
Amphenol RF	
www.amphenolrf.com	
DRAWING NO.	34-1030-12G
ITEM NO.	34-1030-12G
PART NO.	34-1030-12G

REV	DESCRIPTION	DATE	ECN	APPR
A	RELEASE TO MFG.	03-Mar-16	51040	MJD
B	ADJUST THE BODY & HOUSING WALL THICKNESS ARD-DMI6042901S2	06-May-16	--	HHE
C	NO CHANGE TO THIS SHEET	07-Jan-19	10141	SH
D	NO CHANGE TO THIS SHEET	02-Jul-19	12062	SH

CONFIGURATION-2

RECOMMENDED PCB LAUNCH FOR OPTIMAL RF PERFORMANCE

VARIATIONS IN BOARD MATERIAL AND TRACE MAY REQUIRE DIFFERENT GEOMETRY
PLEASE CONTACT AMPHENOL RF FOR LAUNCH OPTIMIZATION



UNLESS OTHERWISE SPECIFIED, DIMENSIONS ARE IN METRIC AND TOLERANCES ARE:
 <0.5mm ±0.05mm 0.5 - 6mm ±0.1mm 6 - 30mm ±0.2mm 30 - 120mm ±0.3mm ANGLES ±1°

NOTICE - These drawings, specifications, or other data (1) are, and remain the property of Amphenol corp. (2) must be returned upon request; and (3) are confidential and not to be disclosed to any person other than those to whom they are given by Amphenol Corp. the furnishing of these drawings, specifications, or other data by Amphenol Corp., or to any other person to anyone for any purpose is not to be regarded by implication or otherwise in any manner licensing, granting rights to permitting such holder or any other person to manufacture, use or sell any product, process or design, patented or otherwise, that may in any way be related to or disclosed by said drawings, specifications, or other data.

MATERIAL	DRAWN	DATE
REFERENCE	M. ZHANG	02-Jul-19
EAR# 4028	ENGINEER	DATE
REF:	KARTHIK R	19-Feb-16
CONFIGURATION LEVEL: In Work	APPROVED	DATE
FINISH	S.HSIEH	02-Jul-19
	CAD FILE	

TITLE	DATE
HD BNC RA BHD	02-Jul-19
JACK PCB MOUNT	DATE
	19-Feb-16
	DATE
	02-Jul-19

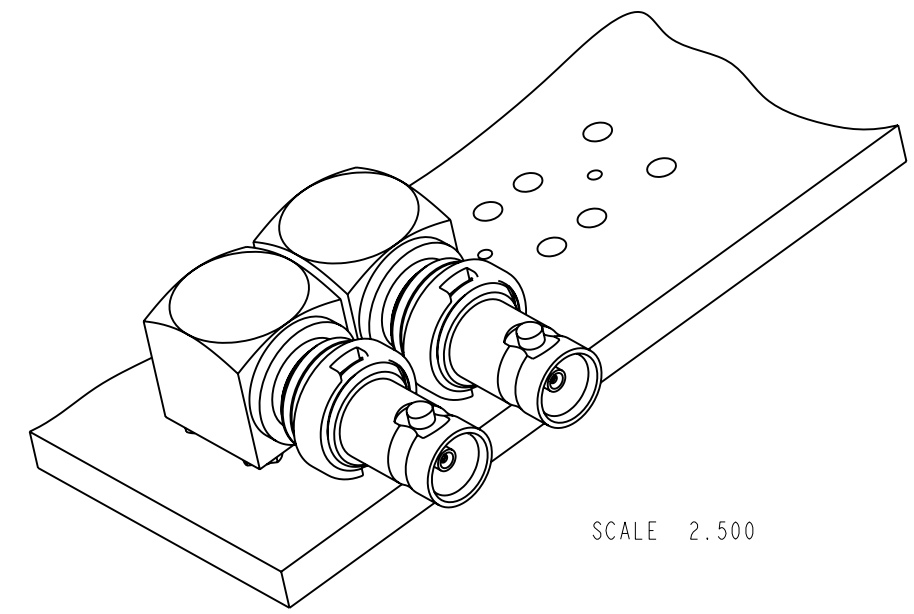
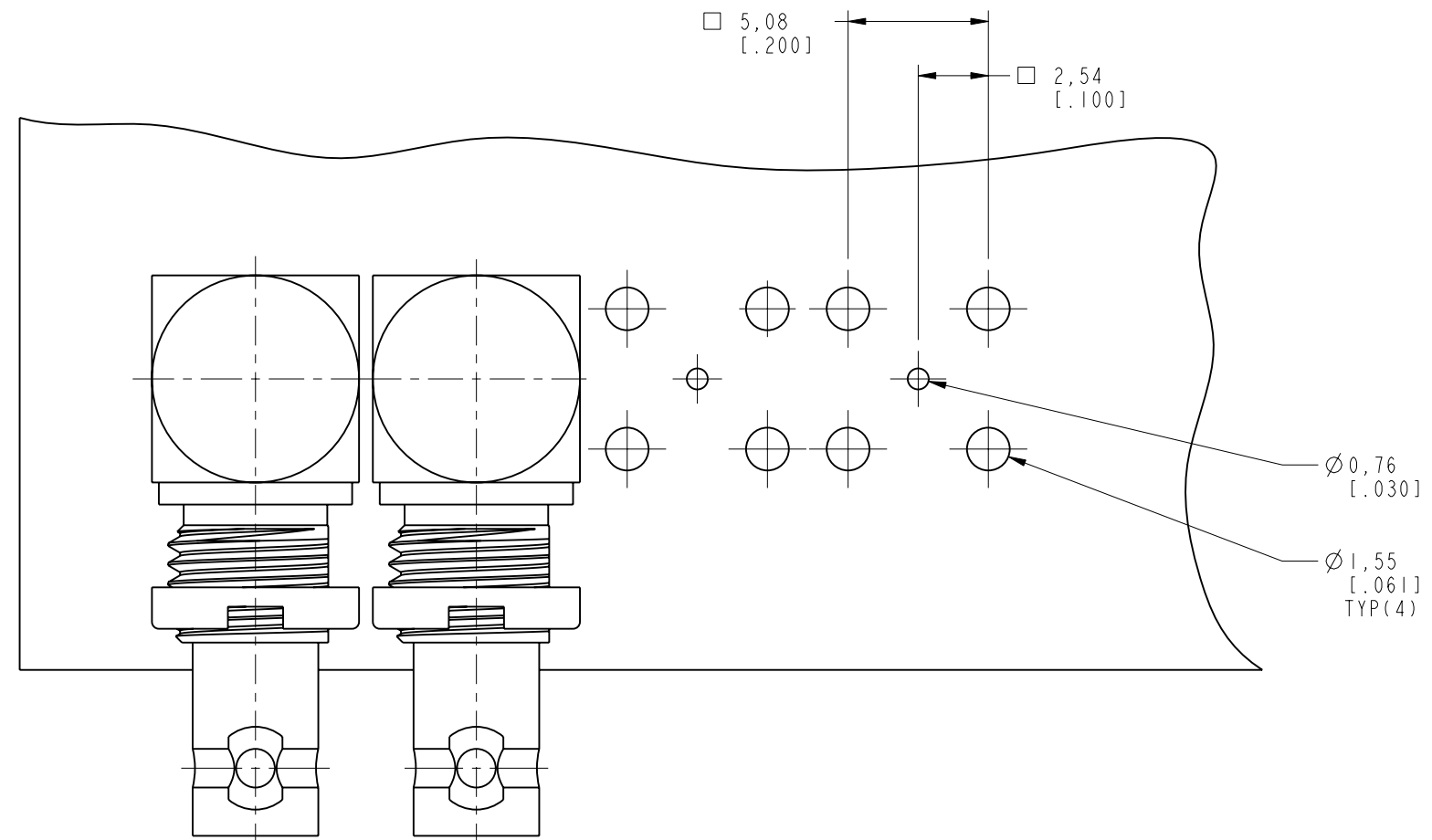
SCALE: 5.0:1.0	SHEET 5 OF 6
DWG SIZE	REV
B	D

Amphenol RF	
www.amphenolrf.com	
DRAWING NO.	34-1030-12G
ITEM NO.	34-1030-12G
PART NO.	34-1030-12G

THIRD ANGLE PROJ.

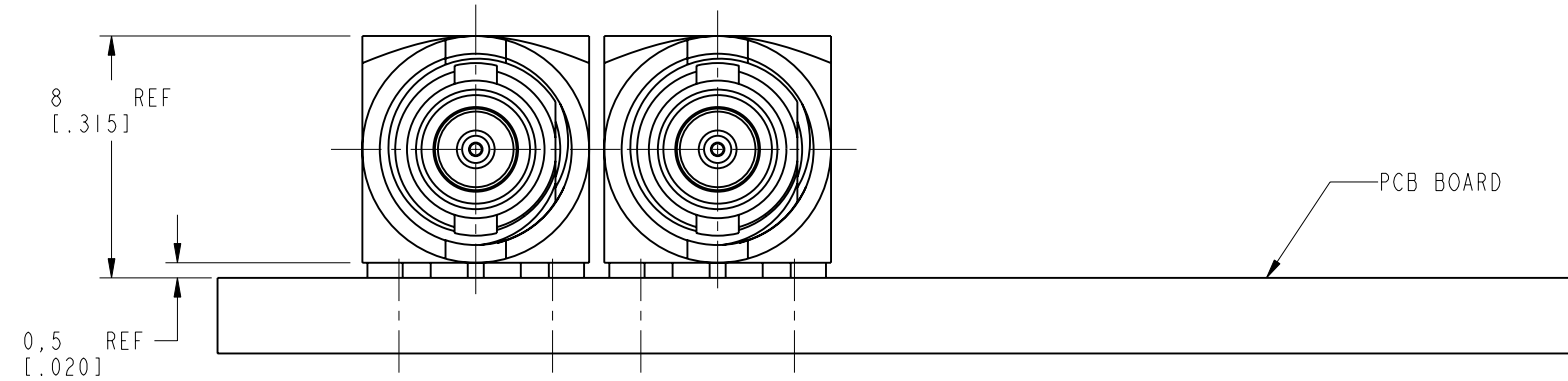
REVISIONS

REV	DESCRIPTION	DATE	ECN	APPR
A	RELEASE TO MFG.	03-Mar-16	51040	MJD
B	ADJUST THE BODY & HOUSING WALL THICKNESS \\RD-DMI6042901S2	06-May-16	--	HHE
C	NO CHANGE TO THIS SHEET	07-Jan-19	10141	SH
D	Ø1.55 WAS Ø1.70 & Ø0.76 WAS Ø0.70	02-Jul-19	12062	SH



CONNECTORS TO BE SPACED AT 8.00 MM [0.315] MIN. PITCH.

RECOMMENDED PCB MOUNTING HOLES



CUSTOMER OUTLINE DRAWING

ALL OTHER SHEETS ARE FOR INTERNAL USE ONLY

<p>UNLESS OTHERWISE SPECIFIED, DIMENSIONS ARE IN METRIC AND TOLERANCES ARE:</p> <table border="1"> <tr> <td><0.5mm</td> <td>0.5 - 6mm</td> <td>6 - 30mm</td> <td>30 - 120mm</td> <td>ANGLES</td> </tr> <tr> <td>± 0.05mm</td> <td>±0.1mm</td> <td>±0.2mm</td> <td>± 0.3mm</td> <td>±1°</td> </tr> </table> <p>NOTICE - These drawings, specifications, or other data (1) are, and remain the property of Amphenol corp. (2) must be returned upon request; and (3) are confidential and not to be disclosed to any person other than those to whom they are given by Amphenol Corp. the furnishing of these drawings, specifications, or other data by Amphenol Corp., or to any other person to anyone for any purpose is not to be regarded by implication or otherwise in any manner licensing, granting rights to permitting such holder or any other person to manufacture, use or sell any product, process or design, patented or otherwise, that may in any way be related to or disclosed by said drawings, specifications, or other data.</p>	<0.5mm	0.5 - 6mm	6 - 30mm	30 - 120mm	ANGLES	± 0.05mm	±0.1mm	±0.2mm	± 0.3mm	±1°	<p>MATERIAL</p>	<p>DRAWN</p> <p>M. ZHANG</p> <p>DATE</p> <p>02-Jul-19</p>	<p>TITLE</p> <p>HD BNC RA BHD</p> <p>JACK PCB MOUNT</p>	<p>Amphenol RF</p> <p>www.amphenolrf.com</p>
	<0.5mm	0.5 - 6mm	6 - 30mm	30 - 120mm	ANGLES									
± 0.05mm	±0.1mm	±0.2mm	± 0.3mm	±1°										
<p>REFERENCE</p> <p>EAR# 4028</p> <p>REF:</p> <p>CONFIGURATION LEVEL: In Work</p> <p>FINISH</p>	<p>ENGINEER</p> <p>KARTHIK R</p> <p>DATE</p> <p>19-Feb-16</p>	<p>APPROVED</p> <p>S.HSIEH</p> <p>DATE</p> <p>02-Jul-19</p>	<p>SCALE: 4.0:1.0</p> <p>SHEET 6 OF 6</p>	<p>DRAWING NO. 34-1030-12G</p> <p>ITEM NO. 34-1030-12G</p> <p>PART NO. 34-1030-12G</p>										
		<p>DWG SIZE</p> <p>B</p>	<p>REV</p> <p>D</p>											