

15 Watt BTI Series

Wide input voltage range, High efficiency, Low input / Load regulation

Input: 24V, 48V Output: 3.3V, 5V, 12V, 15V, ±12V, ±15V

- Industry standard 1 x 1(in)
- Wide input voltage range 4:1
- High efficiency 85% to 90%
- 6 sided metal shield cover
- Remote ON/OFF control
- Isolation voltage DC1500V
- Over current protection
- Low input voltage protection
- Dual power supply usable as single power supply
- Operating temp. -40°C to +85°C (Temp. derating required)
- RoHS compliance
- UL/c-UL approved

Model BTI Series	Input V Vdc	Output V Vdc	Output P W	Output I A	Line Reg. %(max.)	Load Reg. %(max.)	Ripple Noise mVpp(max.)	Efficiency %(typ.)
BTI24-03S400D	9 to 36	3.3	13.2	0 to 4	0.4	0.4	70	85
BTI24-05S300D		5	15	0 to 3				87
BTI24-12S130D		12	15.6	0 to 1.3				88
BTI24-15S100D		15	15	0 to 1	0.5	1.0	95	88
BTI24-12W65D		±12	15.6	0 to 0.65				89
BTI24-15W50D	±15	15	0 to 0.5	90				
BTI48-03S400D	18 to 76	3.3	13.2	0 to 4	0.4	0.4	70	85
BTI48-05S300D		5	15	0 to 3				87
BTI48-12S130D		12	15.6	0 to 1.3				88
BTI48-15S100D		15	15	0 to 1	0.5	1.0	95	88
BTI48-12W65D		±12	15.6	0 to 0.65				89
BTI48-15W50D	±15	15	0 to 0.5	90				

Note 1: If not indicated, Input V rating, Output V rating, Output I rating, ambient temp. are measured at 25°C±5°C

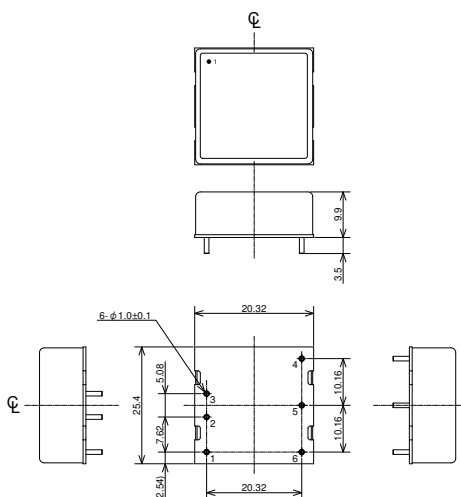
Note 2: Ripple noise is measured at BW=20MHz.

Note 3: Temp. derating and forced air cooling required depending on the ambient temp. conditions.

Note 4: Adjustable output voltage range is 2.97 to 3.63V(3.3V products), 4.5 to 5.5V(5V products), 10.8 to 13.2V(12V products) and 13.5 to 16.5V(15V products).

Note 5 : The maximum output power of each product is specified as shown in Table above. If the output voltage is raised with the variable output voltage function, reduce the output current to the value specified by the maximum output power.

<Outline>



BTI-S Series

Pin	Function
1	RC
2	-Vin
3	+Vin
4	-Vout
5	TRIM
6	+Vout

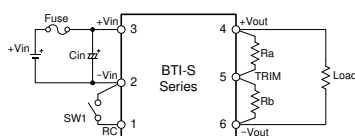
BTI-W Series

Pin	Function
1	RC
2	-Vin
3	+Vin
4	-Vout
5	COM
6	+Vout

Weight : 20g typ.
Unit : mm

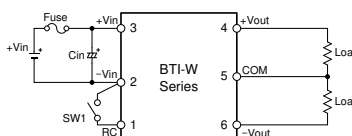
<Standard connection diagram>

BTI-S Series (3.3V, 5V, 12V, 15V)



SW1
Open = Output OFF
Short = Output ON

BTI-W Series (±12V, ±15V)



SW1
Open = Output OFF
Short = Output ON

- This product has limit to the capacity of external capacitor. Please refer to the data sheet.

- BTI-S Series is rated output voltage with 5pin (TRIM) open. To change the output voltage, connect a resistor to Ra or Rb.