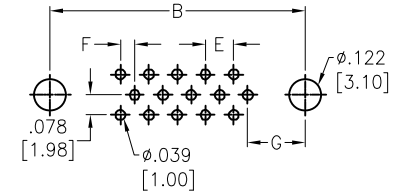
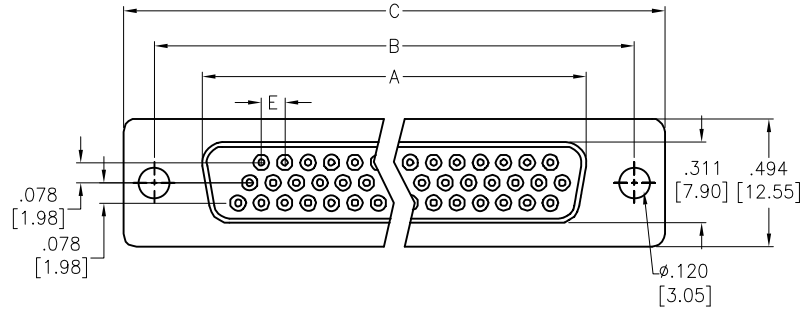
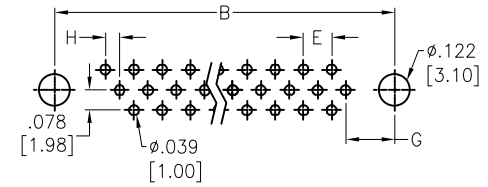
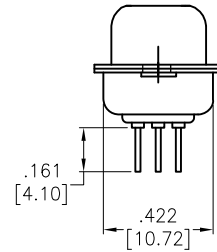
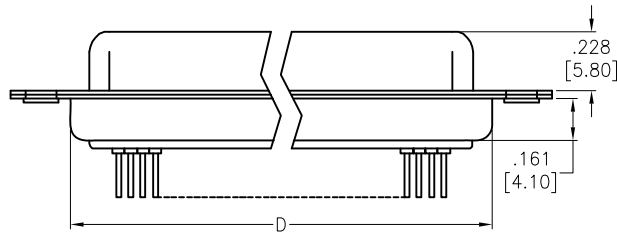


APPROVED: \_\_\_\_\_  
 DATE: \_\_\_\_\_ TITLE: \_\_\_\_\_

Rev	AWO #	Description	Date	Appr
-		RELEASED	5/5/05	
A		UPDATED DRAWING	5/27/16	HR/CT



15 POSITION FEMALE  
RECOMMENDED PCB LAYOUT



26, 44 & 62 POSITION FEMALE  
RECOMMENDED PCB LAYOUT

Positions	A	B	C	D	E	F	G
15	.643 [16.33]	.984 [24.99]	1.213 [30.81]	.756 [19.20]	.090 [2.29]	.045 [1.145]	.277 [7.04]
26	.972 [24.70]	1.311 [33.30]	1.543 [39.20]	1.091 [27.70]	.090 [2.29]	.045 [1.145]	.271 [6.88]
44	1.512 [38.40]	1.852 [47.04]	2.089 [53.05]	1.618 [41.10]	.090 [2.29]	.045 [1.145]	.271 [6.88]
62	2.157 [54.80]	2.500 [63.50]	2.732 [69.40]	2.256 [57.30]	.095 [2.41]	.474 [1.205]	.276 [7.00]

**SPECIFICATIONS:**

Material:  
 Insulator: PBT, glass reinforced, rated UL 94V-0  
 Insulator color: Black  
 Contacts: Copper Alloy  
 Shell: Steel, Tin plated  
 Plating:  
 Gold flash over Nickel underplate on contact area  
 Electrical:  
 Operating voltage: 250 VAC  
 Current rating: 3 Amps  
 Contact resistance: 20 mohms max  
 Insulation resistance: 1,000 Mohms min @ 500 VDC  
 Dielectric withstanding voltage: 250 VAC for 1 minute  
 Environmental:  
 Lead free, RoHS compliant

UNLESS OTHERWISE SPECIFIED  
 ALL DIMENSIONS ARE INCHES [MM]  
 TOLERANCES: EXCEPT AS NOTED  
 INCHES HOLES  
 .X ± .10 Ø.X ± .10  
 .XX ± .020 Ø.XX ± .015  
 .XXX ± .015 Ø.XXX ± .010

**ADAM TECH**

909 Rahway Avenue, Union, NJ 07083  
 Phone: 908-687-5000 Fax: 908-687-5710

APPROVALS		DATE
DRAWN	SS	5/5/05
CHECKED		
APPROVED		

TITLE		
HIGH DENSITY D-SUB SOCKET, PCB TAILS .120 [3.05] MOUNTING HOLES		
SIZE	PART NO.	REV.
X	HDTXX-ST	A
REF:	S00087T	SCALE: NTS SHEET 1 OF 1