

# SPECIFICATION FOR APPROVAL



TO: \_\_\_\_\_

PART NO.		REV.	00	DELTA SAMPLE ISSUE NO	
PART NAME	EMI FILTER			DELTA MODEL	05DBAW5
ORDER P/N.	05DBAW5			SAMPLE ISSUE DATE	

**1. ELECTRICAL CHARACTERISTICS:**

- 1-1. VOLTAGE RATING ..... 115/250VAC
- 1-2. CURRENT RATING
  - A. AT 115VAC ..... 5 A RMS Max.
  - B. AT 250VAC ..... 5 A RMS Max.
- 1-3. OPERATING FREQUENCY..... 50/60 Hz
- 1-4. LEAKAGE CURRENT: EACH LINE TO GROUND
  - A. @115VAC 60Hz ..... 0.25 mA Max.
  - B. @250VAC 50Hz ..... 0.45 mA Max.
- 1-5. HIPOT RATING (FOR ONE MINUTE)
  - A. LINE TO GROUND ..... 2250VDC
  - B. LINE TO LINE ..... 1450VDC
- 1-6. TEMPERATURE RANGE: -25 TO +100 DEGREE C
- 1-7. MINIMUM INSERTION LOSS IN dB: (AT 50 OHM SYSTEM)

FREQ. MHz	.01	.05	.10	.15	.50	1.0	5.0	10	30
COM. MODE dB	/	/	/	15	30	38	45	45	40
DIF. MODE dB	/	/	/	6	15	20	40	45	45

1-8. SAFETY

REPORT BY	CHECKED BY	APPROVED BY	
			REV.

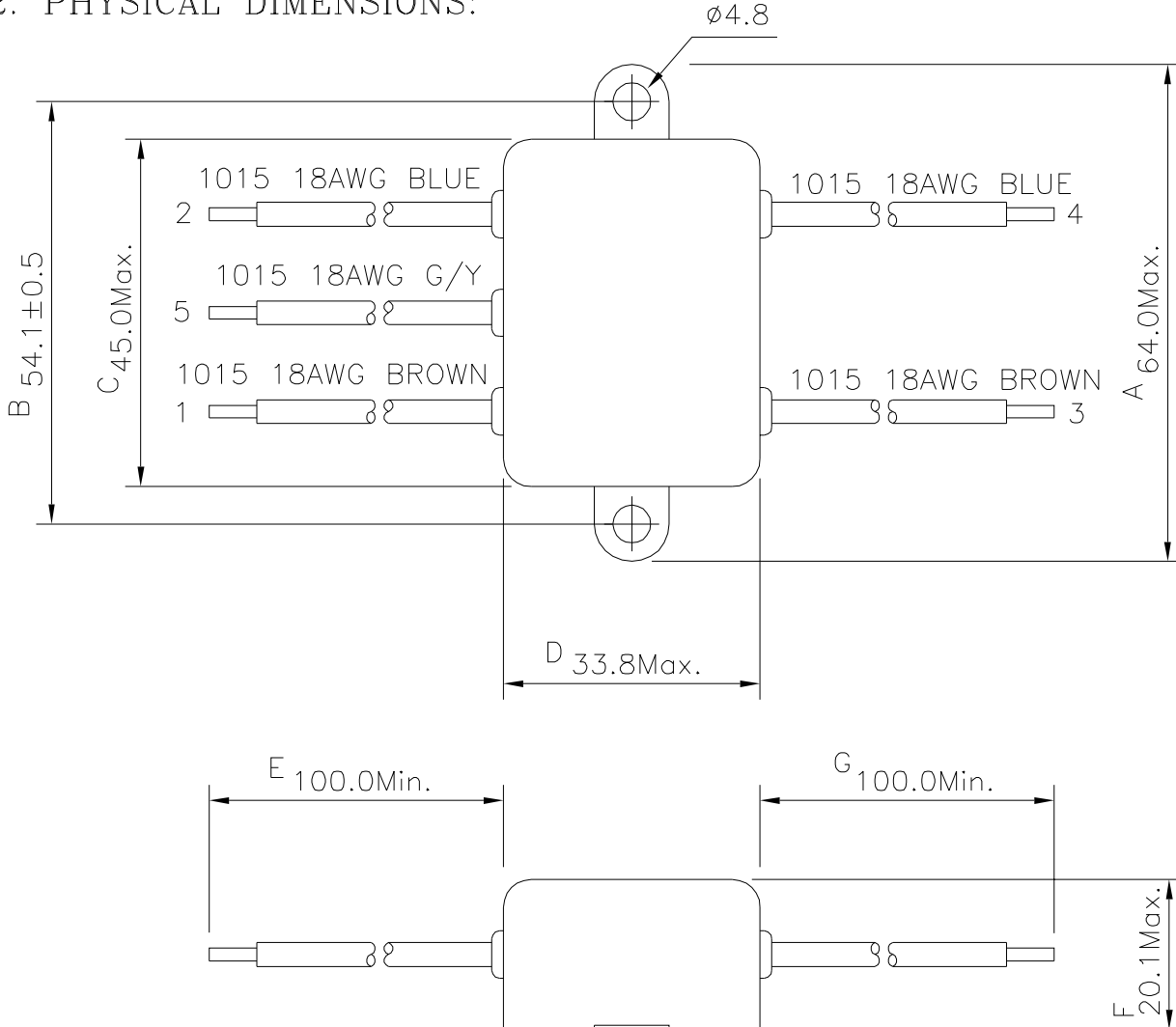
# SPECIFICATION FOR APPROVAL



TO: \_\_\_\_\_

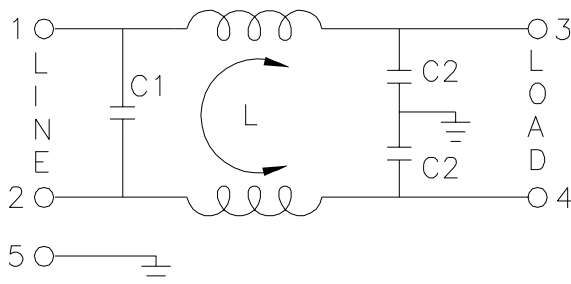
PART NO.		REV.	00	DELTA SAMPLE ISSUE NO	
PART NAME	EMI FILTER			DELTA MODEL	05DBAW5
ORDER P/N.	05DBAW5			SAMPLE ISSUE DATE	

## 2. PHYSICAL DIMENSIONS:



UNIT: mm

## 3. SCHEMATIC:



L: 2.9mH  
 C1: 0.1uF  
 C2: 3300pF

REPORT BY	CHECKED BY	APPROVED BY	UNLESS OTHERWISE SPECIFIED DIMENSION TOLERANCE DCEIMALS .X± .XX± ANGLES±
			REV.

DELTA ELECTRONICS, INC.

186 RUEY KUANG ROAD, NEIHU. TAIPEI 114,  
 TAIWAN, R.O.C.  
 TEL:886-2-87972088 FAX:886-2-87972120