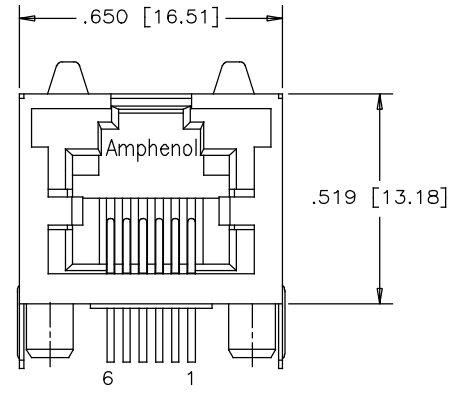
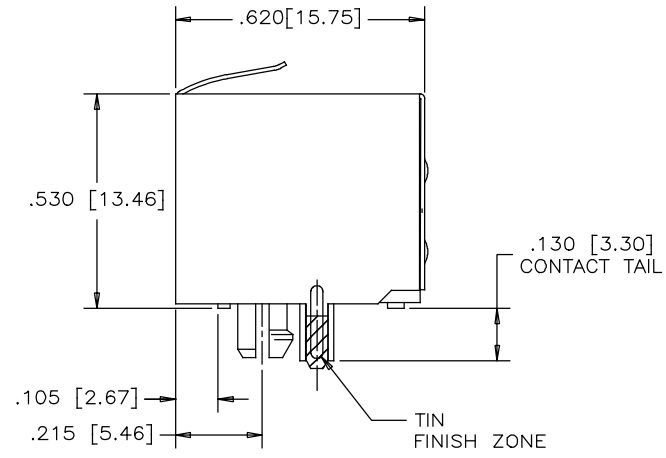


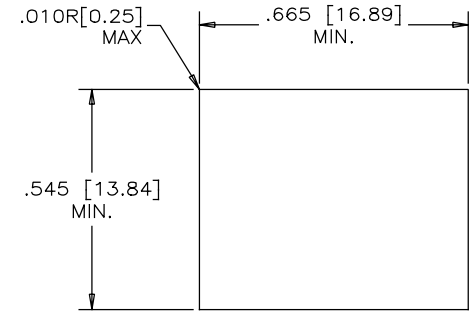
REVISIONS			
REV	DESCRIPTION, ECN, EAR NO.	DATE	APP'D
A	PROPOSAL	APR 08/18	L.CHAN



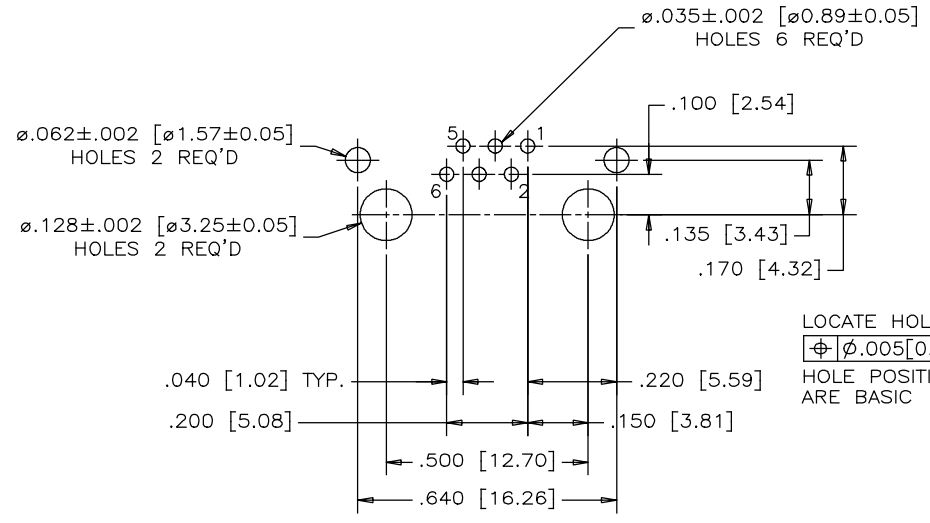
FRONT VIEW



SIDE VIEW



RECOMMENDED PANEL CUTOUT



RECOMMENDED P.C.B. LAYOUT
(COMPONENT SIDE OF BOARD)



LOCATE HOLES
 $\phi .005 [0.13]$
 HOLE POSITIONS
 ARE BASIC

MATERIALS:

PLASTIC HOUSING: HIGH TEMPERATURE THERMOPLASTIC
 FLAMMABILITY RATING UL 94V-0 COLOR: BLACK.
 CONTACTS: PHOSPHOR BRONZE
 PLATING: 50 u" [1.27 MICRONS]
 MIN. GOLD ON MATING SURFACE
 50 u" [1.27 MICRONS]
 MIN. NICKEL UNDERPLATE
 100 u" [2.54 MICRONS]
 MIN. MATTE TIN ON CONTACT TAILS.
 SHIELD: STAINLESS STEEL WITH MATTE TIN PLATING ON SOLDER TAIL

PART NUMBER: RJHSE-7360-A1

UNLESS SPECIFIED OTHERWISE	DRAWN W.QIU	DATE ARF08/18	Amphenol Canada Corp. www.amphenolcanada.com
PRIMARY UNITS INCH	CHECKED L.CHAN	DATE ARF08/18	
SECONDARY MILLIMETER	M.E. APP'D		TITLE RJ11 MODULAR JACK, 6 POSITIONS, 6 STAMPED CONTACTS, SHIELD, W/O LEDS TRAY PACKAGING, 0.13" LONG CONTACT TAIL - RoHS COMPLIANT
REFERENCE IN PARENTHESES	Q.A. APP'D		DWG. NO. P-RJHSE-7360-A1
GENERAL TOLERANCES	DWG APPR.		REV A
1 DECIMAL PLACE ± 0.025	ENG. REL. NO.		CODE ID NO. 03554 DWG SIZE: C SCALE: N/A SHEET 1 OF 2
2 DECIMAL PLACES ± 0.020	REF.		
3 DECIMAL PLACES ± 0.015	THIRD ANGLE PROJECTION	DO NOT SCALE DRAWING	
ANGULAR DEGREES $\pm 1.0^\circ$			

THIS DOCUMENT CONTAINS PROPRIETARY INFORMATION AND SUCH INFORMATION MAY NOT BE DISCLOSED TO OTHERS FOR ANY PURPOSE OR USED FOR MANUFACTURING PURPOSES WITHOUT WRITTEN PERMISSION FROM AMPHENOL CANADA CORP.