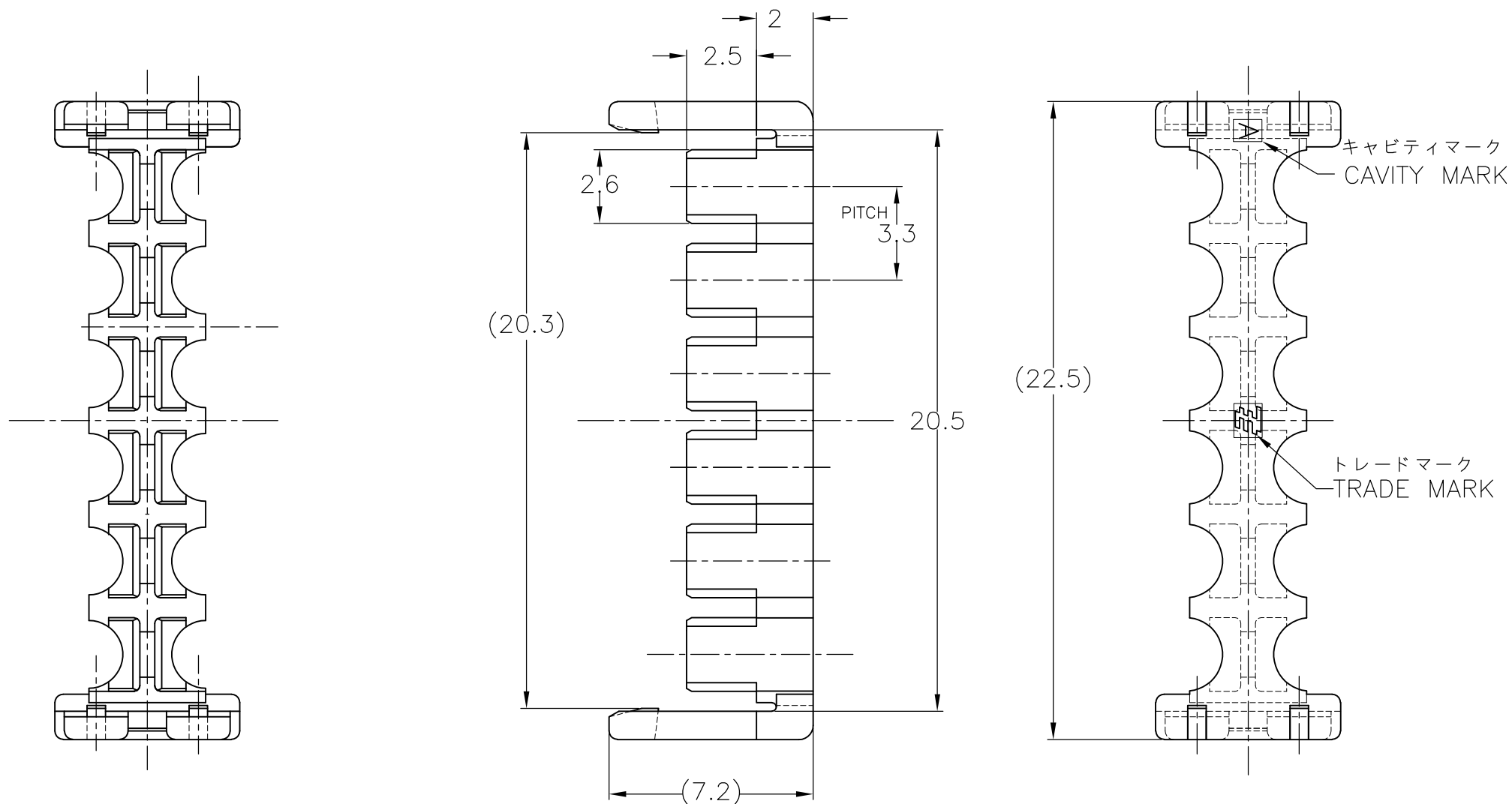


THIS DRAWING IS UNPUBLISHED. RELEASED FOR PUBLICATION JUL, 2005.  
 © COPYRIGHT 2005 BY TYCO ELECTRONICS CORPORATION. ALL INTERNATIONAL RIGHTS RESERVED.

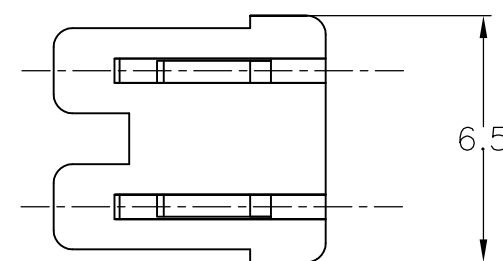
LOC	DIST	REVISIONS 変更					
J	/	P	LTR	DESCRIPTION	DATE	DWN	APVD
		B		REVISED ECR-10-019566	22SEP2010	T.T	T.M

-1; AS SHOWN



TABLE

ダブルロックプレート (DOUBLE LOCK PLATE)	6/6ナイロンガラス強化 (UL94V-0) (6/6 NYLON GLASS FILLED) (UL94V-0)
名称 (NAME)	材料 (MATERIAL)



- 1 適用製品型番  
プラグハウジング: \*-1871570-\*
- 2 適用電線範囲  
電線被覆外径:  $\phi 1.5 \sim \phi 2.0\text{mm}$

- 1 APPLICABLE P/N  
PLUG HOUSING: \*-1871570-\*
- 2 APPLICABLE WIRE RANGE  
INSULATION DIA:  $\phi 1.5 \sim \phi 2.0\text{mm}$

BLACK	1871822-1
COLOR	PART NUMBER

THIS DRAWING IS A CONTROLLED DOCUMENT.		DWN T.HATANO 21JUL2005	Tyco Electronics Corporation Kawasaki, Japan													
DIMENSIONS: 単位: 耗 mm		CHK N.YAMASAKI 21JUL2005														
TOLERANCES UNLESS OTHERWISE SPECIFIED: 一般公差		APVD N.YAMASAKI 21JUL2005	NAME 名称 GRACE INERTIA CONNECTOR 3.3 DOUBLE LOCK PLATE 12POS. 2-ROW, M-TYPE													
<table border="1"> <tr><td>0 PLC</td><td>± 0.3</td></tr> <tr><td>1 PLC</td><td>± 0.3</td></tr> <tr><td>2 PLC</td><td>±</td></tr> <tr><td>3 PLC</td><td>±</td></tr> <tr><td>4 PLC</td><td>±</td></tr> <tr><td>ANGLES</td><td>±</td></tr> </table>		0 PLC	± 0.3	1 PLC	± 0.3	2 PLC	±	3 PLC	±	4 PLC	±	ANGLES	±	PRODUCT SPEC 製品規格 108-78231	SIZE A3	
0 PLC	± 0.3															
1 PLC	± 0.3															
2 PLC	±															
3 PLC	±															
4 PLC	±															
ANGLES	±															
MATERIAL 材料 SEE TABLE		APPLICATION SPEC 取付適用規格	CAGE CODE 00779	DRAWING NO 番号 G-1871822												
		WEIGHT	RESTRICTED TO -													
CUSTOMER DRAWING			SCALE 尺度 5:1	SHEET 1 OF 1												
			REV B													