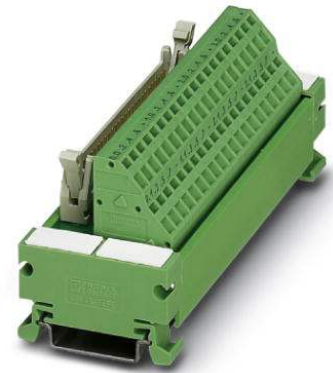



**UM 45-FLK50/ZFKDS/S7-300**

Order No.: 2968111

<http://eshop.phoenixcontact.de/phoenix/treeViewClick.do?UID=2968111>

VARIOFACE interface module for Siemens SIMATIC® S7-300, with SIMATIC®-specific labeling (1 - 40), with spring-cage connection, module width: 126 mm

Commercial data	
GTIN (EAN)	 4 017918 423131
Note	Made-to-order
sales group	I690
Pack	1 pcs.
Customs tariff	85369010
Catalog page information	Page 233 (IF-2009)

## Product notes

WEEE/RoHS-compliant since:  
06/28/2006

<http://www.download.phoenixcontact.com>  
Please note that the data given here has been taken from the online catalog. For comprehensive information and data, please refer to the user documentation. The General Terms and Conditions of Use apply to Internet downloads.

Technical data	
<b>General data</b>	
Nominal voltage $U_N$	60 V DC
Max. current carrying capacity per branch	1 A
Max. total current of voltage supply	2 A
Number of positions	50

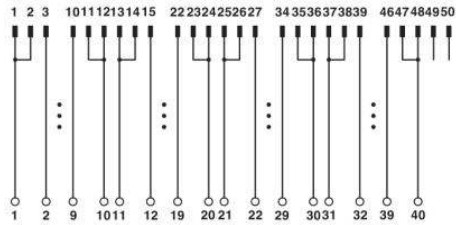
Width	126 mm
Height	45 mm
Depth	50 mm
Status display	No
Ambient temperature (operation)	-20 °C ... 50 °C
Ambient temperature (storage/transport)	-20 °C ... 70 °C
Test voltage	500 V (50 Hz, 1 min.)
Test voltage contact/contact	0.5 kV AC
Mounting position	Any
Standards/regulations	IEC 60664
	DIN EN 50178
	IEC 62103
Pollution degree	2
Surge voltage category	II

#### Connection data

Connection 1	Field level
Type of connection	Spring-cage connection
Conductor cross section solid min.	0.14 mm <sup>2</sup>
Conductor cross section solid max.	1.5 mm <sup>2</sup>
Conductor cross section stranded min.	0.14 mm <sup>2</sup>
Conductor cross section stranded max.	1.5 mm <sup>2</sup>
Conductor cross section AWG/kcmil min.	26
Conductor cross section AWG/kcmil max	14
Stripping length	6 mm
Screw thread	M3
Connection 2	Control system level
Number of connections	1
Type of connection	Flat-ribbon cable plug connector in acc. with IEC 60603-13
Number of positions	50

## Diagrams/Drawings

### Circuit diagram



UM 45-FLK50/ZFKDS/S7-300 connection scheme

**Address**

PHOENIX CONTACT Deutschland GmbH  
Flachmarktstr. 8  
32825 Blomberg, Germany  
Phone +49 5235 3 12000  
Fax +49 5235 3 41200  
<http://www.phoenixcontact.de>



© 2011 Phoenix Contact  
Technical modifications reserved;