

PART NUMBER	REV	FIRST USED	POWER UNIT	FEED TYPE
1852633-1	H	122500-1	LEADMAKER & BENCH G	AIR FEED
1852633-2	H	565435-5	BENCH MODEL K	AIR FEED
7-1852633-7	A			

OBS

- 1 RECOMMENDED SPARE PARTS.
- 2 GREASE LIGHTLY.
- 3 LUBRICATE DAILY USING NO.20 MACHINE OIL.
- 4 AFTER ASSEMBLY OF APPLICATOR, PROPER SPRING PRESSURE (ITEM 34) CAN BE OBTAINED BY TIGHTENING SET SCREW (ITEM 105) UNTIL CONTACT IS MADE WITH SPACER (ITEM 32) THEN TIGHTEN AN ADDITIONAL 5 1/2-6 REVOLUTIONS.
- 5 TO BE SHIPPED WITH ASSEMBLY.
- 6 APPLY LOCTITE TO ITEM 93 AT ASSEMBLY.

TERMINAL NAME: RECEPTACLE, FLAG, FASTIN-FASTON, .250 SERIES					
TE TERMINAL - TE CRIMP SPECS					
WIRE STRIP LENGTH	TERM APPL SPEC	FEED	APPL INSTRUCTIONS	SET UP GAGE	LAYOUT
.205-.235	114-2078	.820	408-8037	-	-

REVISIONS					
LOC	DIST	REV	DESCRIPTION	DATE	BY
A	66	G	ECR-17-015299	16OCT2017	AW
		H	ECR-18-000214	05JAN2018	AW
		H1	ECR-18-004490	26MAR2018	FL
		H2	ECR-18-015893	13OCT2018	YY

ITEM NO	DESCRIPTION	QTY
93	SCR, SET, CONE POINT 8-32 X .250	1
91	SCR, SKT HD CAP 8-32 X .750	4
90	SCR, SKT HD CAP, S-LOCK, 8-32 X .625	2
89	SCR, SKT HD CAP 8-32 X .625	2
88	SCR, HEX HD CAP, IN	4
87	SCR, BTN SKT HD CAP 8-32 X .375	1
86	SCR, SKT HD CAP 1/4-20 X .625	2
80	GUARD ASSEMBLY	1
79	SCR, SHC (10-32X.25)	2
78	AIR FEED ASSEMBLY	1
77	PLATE, APPLICATOR, MOUNTING	1
76	SCREW, DRIVE	2
75	PLATE, IDENTIFICATION	1
65	BLOCK, PIVOT	1
64	PIN, PIVOT	1
59	CAP, RAM	1
58	HOUSING, MACHINING	1
56	RING, SPLIT	1
55	PIN, FEED FINGER	1
54	SPRING-FEED FINGER	1
53	FINGER, FEED	1
52	PIVOT ARM	1
50	SCR, SHLD, SLOT HD, 3/16 DIA	1
49	SCR, BTN SKT HD CAP 1/4-20 X .750	1
46	INSULATION ADJUST BLOCK	1
45	PLUG, NYLON	1
44	RAM, SPECIAL	1
43	SHIM SUB-ASSY	1
42	SHIM	1
37	DISC ADJUSTABLE -F	1
34	SPRING, DIE	1
32	SPACER, SPRING	1
31	MOUNT, DRAG	1
30	STUD, THREADED	1
29	PIN, DOWEL .1250 X .500	1
28	PIN, HINGE	1
26	PLATE, BASE	1
25	BAR, HINGE	1
24	STABILIZER	1
23	BLOCK, SPRING PRESSURE	1
22	SPRING, COMPRESSION	1
21	PIN, DOWEL .1250 X 1.000	1
20	DRAG, STOCK	1
19	GUIDE, STRIP, REAR	1
18	GUIDE, FRONT STRIP	1
16	SPRING, EXTENSION	1
14	TERMINAL POSITIONER	1
12	SPRING, COMPRESSION	1
11	PLATE, REAR SHEAR	1
10	ANVIL, INSERT	1
9	PLATE, SHEAR, FRONT	1
8	ANVIL, REVERSIBLE	1
7	BLADE, SHEAR	1
5	ANVIL RETAINING	1
4	SPACER, TUBULAR	1
3	CRIMPER, INSULATION PREMIUM	1
2	SPACER, CRIMPER	1
1	CRIMPER, WIRE	1

TERMINAL NAME: RECEPTACLE, FLAG, FASTIN-FASTON, .250 SERIES					
TE TERMINAL - TE CRIMP SPECS					
WIRE STRIP LENGTH	TERM APPL SPEC	FEED	APPL INSTRUCTIONS	SET UP GAGE	LAYOUT
.205-.235	114-2078	.820	408-8037	-	-

1	1	-	1-692134-3	TERMINAL POSITIONER	139
-	1	..	462622-2	AIR FEED ASSEMBLY	138
2	2	-	21024-5	WASHER, SPRG LOCK, REG NO 10	131
1	1	-	3-22183-9	PIN, GROOVED, TYPE 67	123
1	1	-	3-21028-2	PIN, SLOTTED SPRING .094 X .250	121
2	2	-	4-21028-9	PIN, SLOTTED SPRING .125 X .375	120
1	1	-	21029-5	PIN, SLOTTED SPRING .188 X .750	119
4	4	-	21024-4	WASHER, SPRG LOCK, REG NO 8	115
2	2	-	21899-2	WASHER, FLAT	113
1	1	-	1-22202-7	NUT, HEX, JAM 5/16-24/UNF	109
1	1	-	21022-3	NUT, HEX, SELF-LOCKING, THIN, 10-32	108
1	1	-	1-21986-2	RING, RETAIN, EXTERN, 3/16 E-RING	107
2	2	-	21045-3	RING, RETAIN, EXTERN, 3/16 CRESCENT	106
1	1	-	8-21007-5	SCR, SET, CUP POINT 5/16-24 X .750	105
7	7	-	2-22733-8	SCR, BHSC, SELF-LOCKING, 1/4-20 X .625	104
1	1	-	21009-2	SCR, SET, SELF LOCKING 1/4-20 X .250	102
6	6	-	3-21000-8	SCR, SKT HD CAP 10-32 X .875	99
2	2	-	7-21000-6	SCR, SKT HD CAP 10-32 X .312	96
1	1	-	4-21006-5	SCR, SET, CUP POINT 8-32 X .625	94

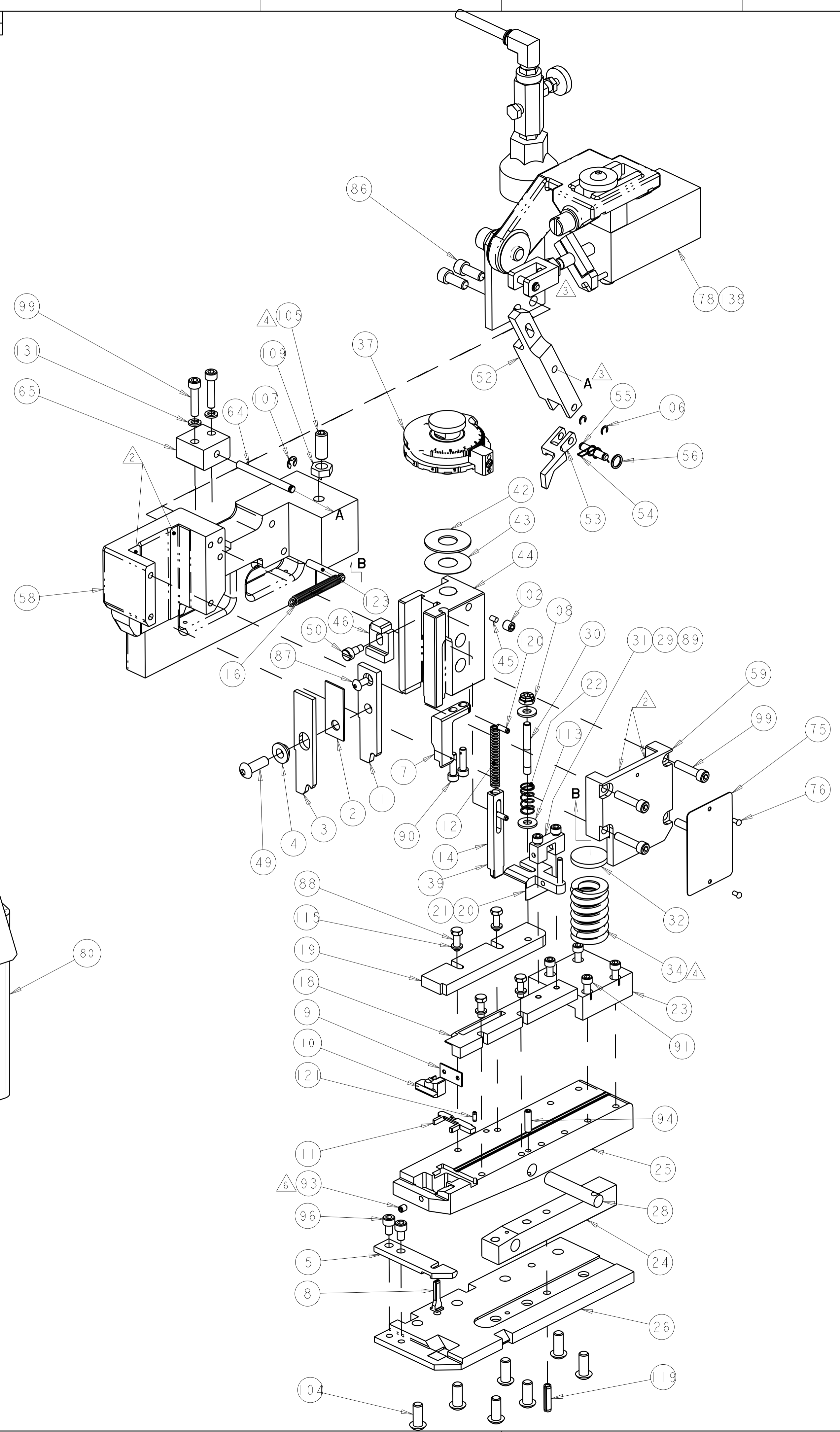
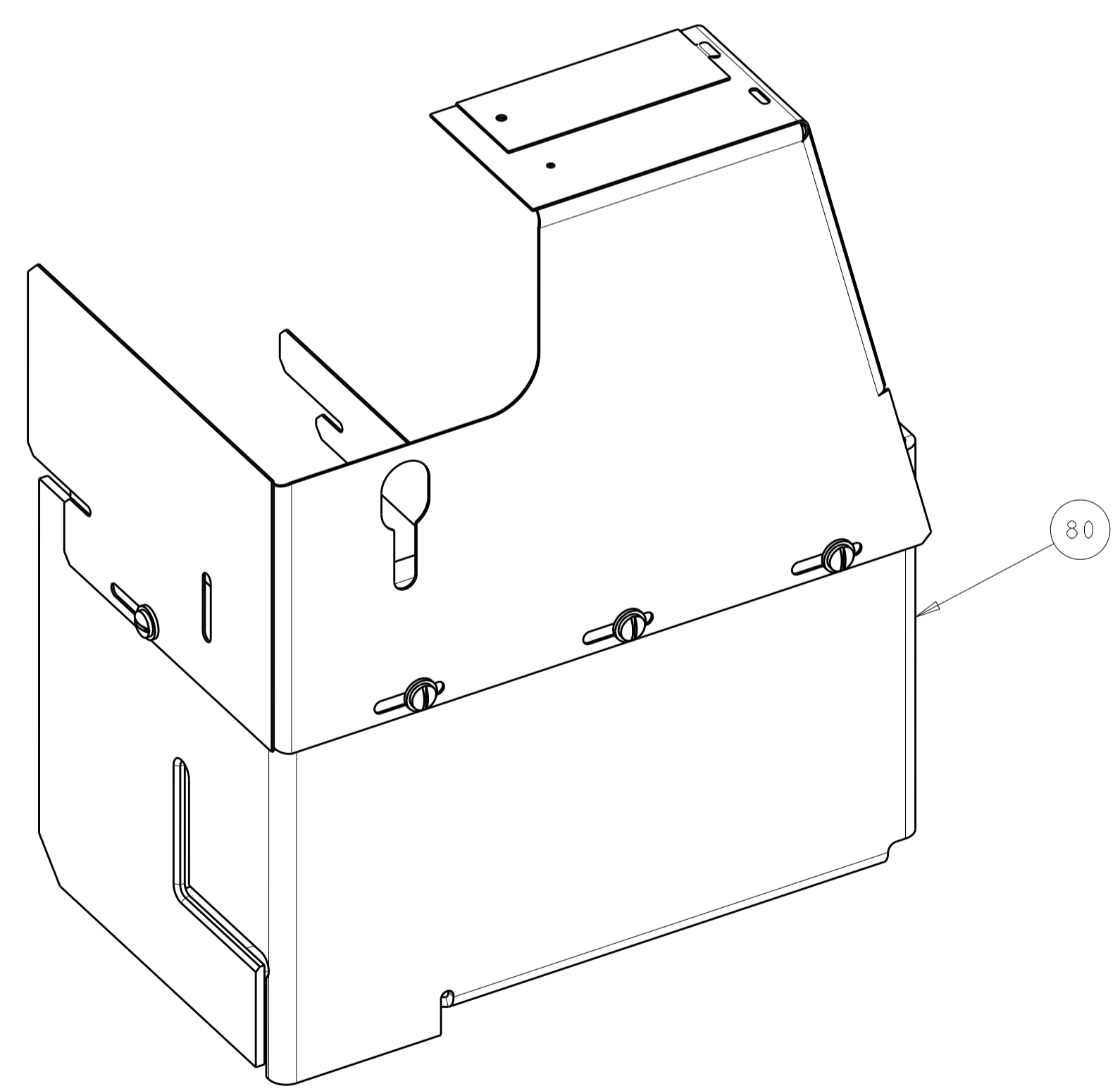
THIS DRAWING IS A CONTROLLED DOCUMENT.

OWN: R.O.WILSON 06FEB2008
 CHK: R.O.WILSON 07FEB2008
 APVD: T. ERLIN 07FEB2008

TE Connectivity
STE
 END FEED HINGE BAR APPLICATOR

SCALE: 1:1 SHEET 1 OF 2 REV: H2

LOC		DIST		REVISIONS					
A		66		P	LYN	DESCRIPTION	DATE	DWN	APVD
				-	-	SEE SHEET 1	-	-	-



THIS DRAWING IS A CONTROLLED DOCUMENT.		DWN R.O.WILSON 06FEB2008		
		CHK R.O.WILSON 07FEB2008		
DIMENSIONS: IN		APVD T. ERLIN 07FEB2008	NAME END FEED HINGE BAR APPLICATOR	
TOLERANCES UNLESS OTHERWISE SPECIFIED: 0 PLC ± 1 PLC ± 2 PLC ± 3 PLC ± 4 PLC ± ANGLES ±		PRODUCT SPEC	RESTRICTED TO	
MATERIAL		WEIGHT	SIZE A100779	CAGE CODE C=1852633
		CUSTOMER ACCESSIBLE PRODUCTION DRAWING	SCALE 3:5	SHEET 2 OF 2 REV H2