

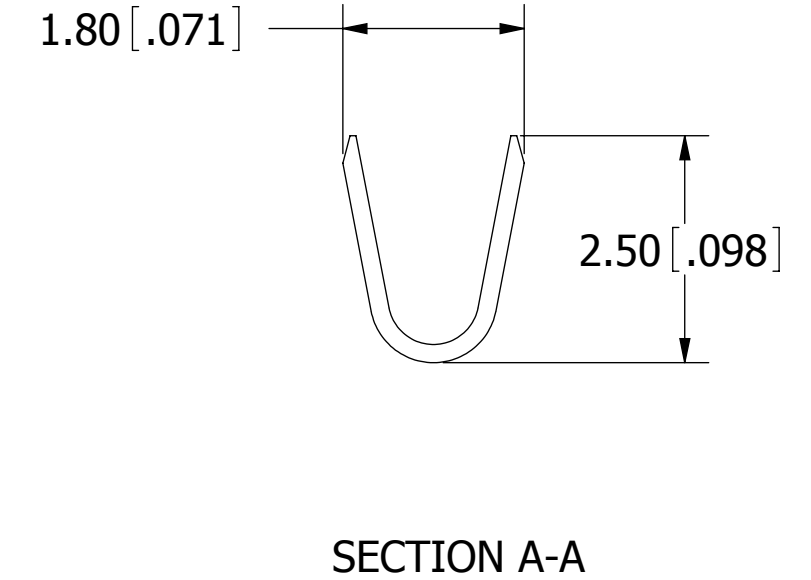
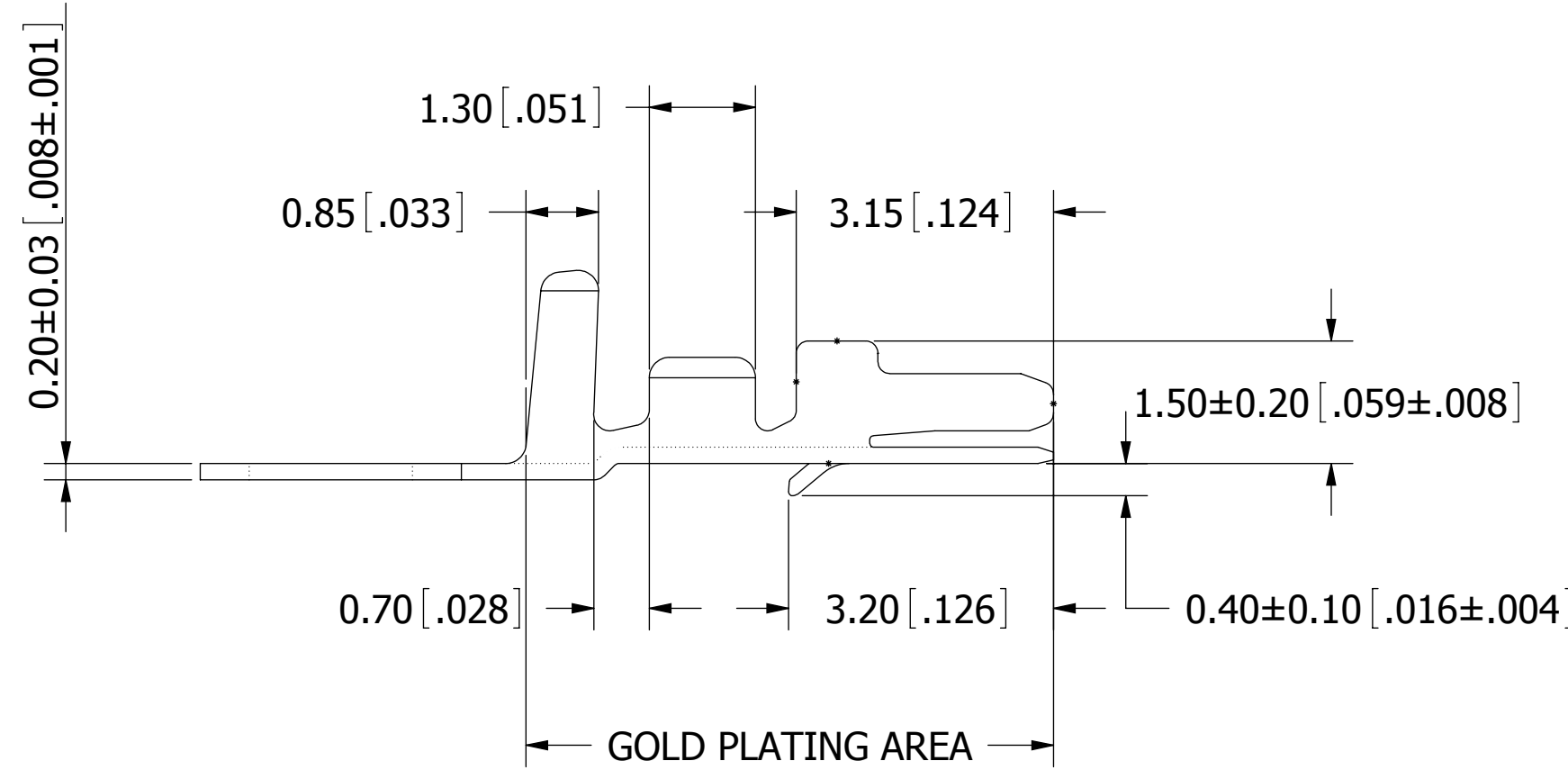
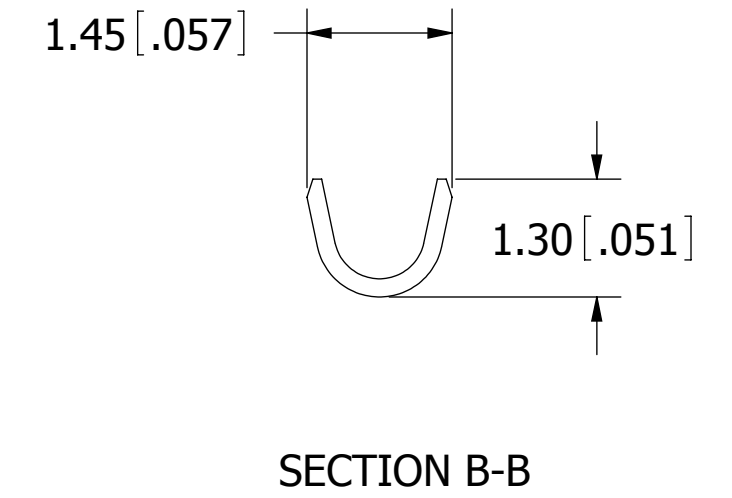
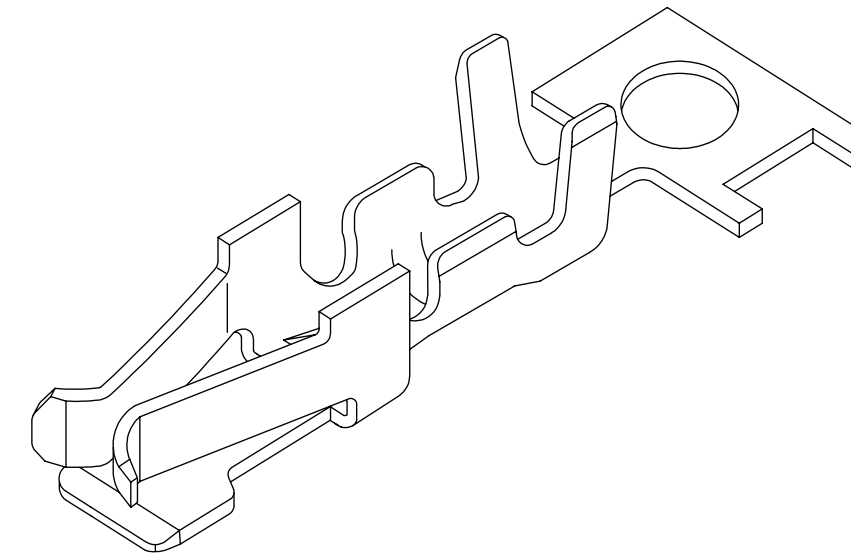
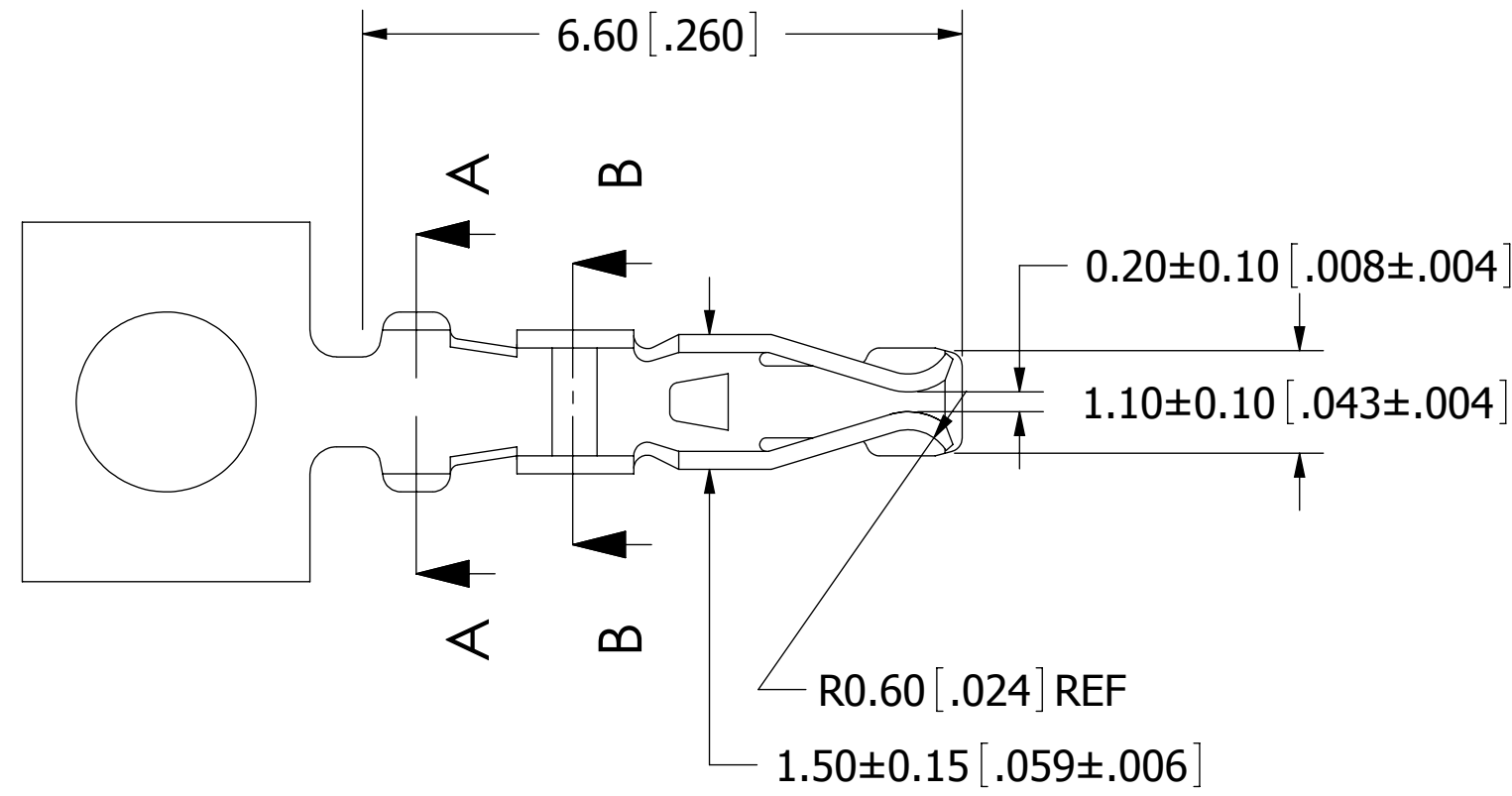
# PART NUMBER CODING

## SWT204-UP N-S01-UU-UU

REVISIONS				
REV.	ECO. NO	DESCRIPTION	DATE	BY
A	2236	INITIAL RELEASE	05/24/2011	LH

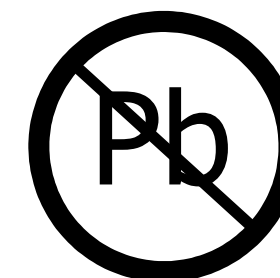
### PLATING

T = .000015" MIN NICKEL UNDERPLATE, .000040" MIN PURE TIN, BRIGHT OVERALL (NOTE 7)  
P = .000040" MIN NICKEL UNDERPLATE, GOLD FLASH OVERALL.



### NOTES:

1. MATERIAL: PHOSPHOR BRONZE.
2. PLATING: SEE PART NUMBER CODING.
3. WIRE RANGE: AWG #22 - #26.
4. INSULATION O.D.:  $\phi$  1.35mm ~  $\phi$  1.70mm.
5. QUANTITY PER REEL = 10,000 PIECES.
6. USED IN SWH204 SERIES HOUSING.
7. PLATING BEFORE STAMPING/FORMING.



RoHS COMPLIANT

UNLESS OTHERWISE SPECIFIED: DIMENSIONS ARE IN MM[INCHES]	DRAWN	DATE	NAME	
		05/24/2011	LH	
TOLERANCES: ANGULAR: .X = ± 0.3 [.01] .XX = ± 0.30 [.012]	<small>THE INFORMATION HEREIN CONTAINS PROPRIETARY INFORMATION OF SULLINS ELECTRONICS AND IS NOT TO BE REPRODUCED, USED OR DISCLOSED TO OTHERS FOR ANY PURPOSE EXCEPT AS SPECIFICALLY AUTHORIZED IN WRITING BY AN OFFICER OF SULLINS ELECTRONICS.</small>			
	<b>TITLE</b> CRIMP TERMINAL - SWH 204 <b>PART NUMBER</b> SWT204-UP_N-S01-UU-UU			
INTERPRET DIMENSIONS AND TOLERANCING PER: ASME Y14.5M-2009		<b>SIZE</b> C <b>CAGE CODE</b> 54453 <b>SCALE:</b> 12:1	<b>DWG. NO.</b> 11627 <b>SHEET</b> 1 OF 1	<b>REV</b> A