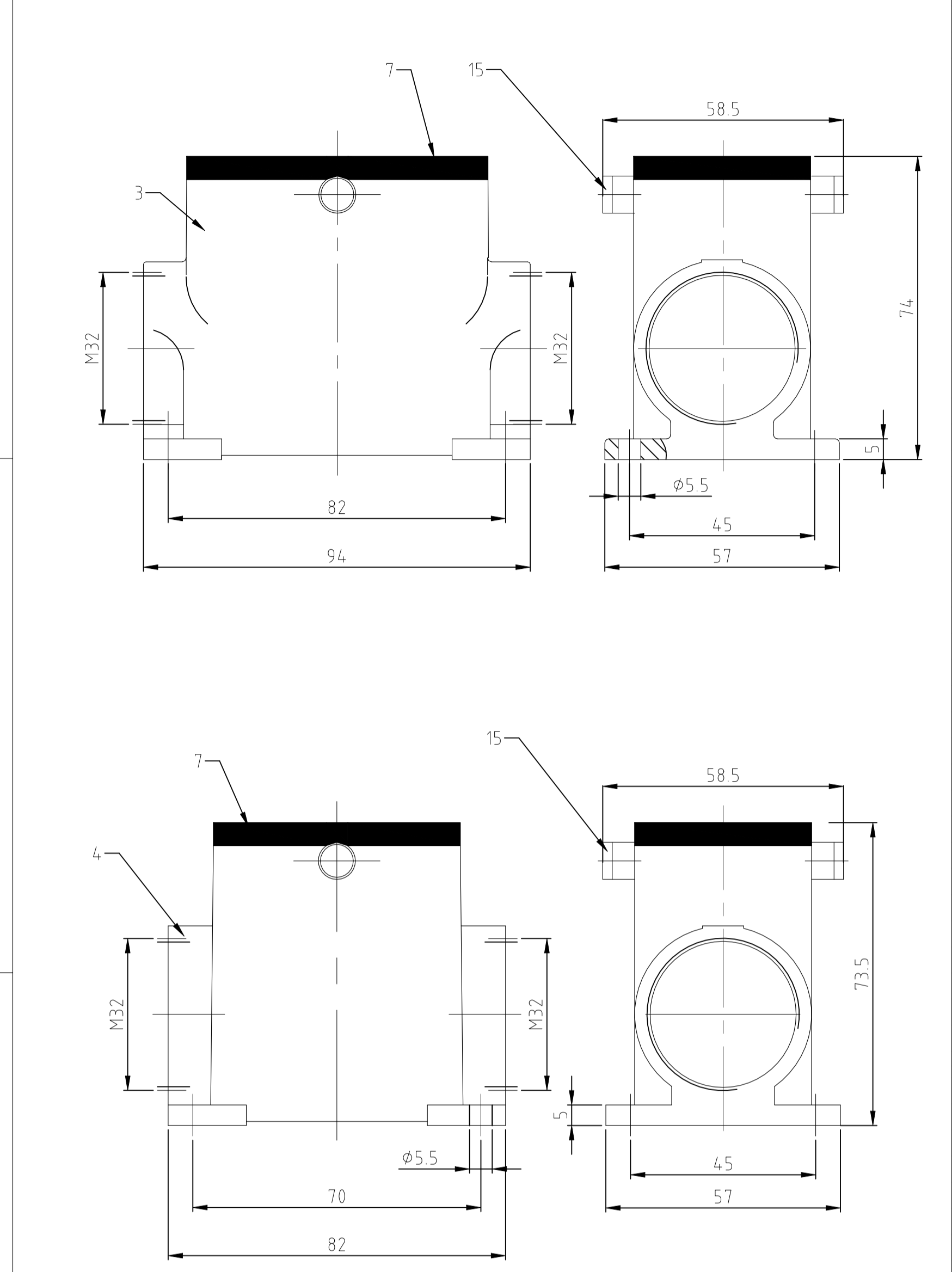


REVISIONS					
NO.	DATE	DESCRIPTION	BY	CHK	APPV
1	08JUL2022	REVISION	AB	PER	JB
DESCRIPTION			EKR-21-123564		



- NOTES:
- Material: Housing: aluminium diecasting alloy
Seals: NEOPRENE
 - SURFACE: VARNISH- GREY
- ALUMINIUM OXID +
VARNISH BLACK
 - PACKAGING:
PACKAGING QUANTITY: 5 PIECES
 - SPECIAL PACKAGING: Krauss-Maffei
PACKAGING UNIT: 50 PIECES IN Krauss-Maffei-Box
 - WITHOUT HTS LOGO
 - VARNISH ON THE INSIDE NOT NECESSARILY

NO.	DESCRIPTION	MATERIAL	SURFACE	COLOR	QTY	REMARKS
1	cover	aluminium/ALU		grau	20	ohne Logo
2	clip positioner	steel	verzinkt/zink plated	blue	19	
2	clip bolt	steel		blue	18	
1	Blanking Piece with Seal	steel		blue	17	M64
1	surface mounted housing side entry	aluminium/ALU		grau	16	ohne Logo
	clip bolt	stainless steel			15	
	clip bolt	steel	zink plated	blue	14	
	side clip	stainless steel			13	
1	side clip	steel	zink plated	blue	12	
	clip positioner	stainless steel			11	
	clip positioner	steel	zink plated	blue	10	
	clip bolt	stainless steel			9	
	clip bolt	steel	zink plated	blue	8	
1	seal	Neoprene		schwarz	7	
	cover	aluminium/ALU	aluminium oxid	schwarz	6	
	cover	aluminium/ALU		grau	5	
	surface mounted housing side entry	aluminium/ALU	aluminium oxid	schwarz	4	BG3
	surface mounted housing side entry	aluminium/ALU	aluminium oxid	schwarz	3	BG4
	surface mounted housing side entry	aluminium/ALU	aluminium oxid	schwarz	2	BG8
	surface mounted housing side entry	aluminium/ALU		grau	1	

THIS DRAWING IS A CONTROLLED DOCUMENT. DWN: Schneider 30.09.03
 DIESE ZEICHNUNG IST EIN KONTROLLIERTES DOKUMENT. GIK: Schneider 30.09.03

DIMENSIONS: mm TOLERANCES UNLESS OTHERWISE SPECIFIED: ALL DIMENSIONS IN MILLIMETERS
 0 P.D. ISO 9001 mH-E
 1 P.D. DIN 16201-1
 2 P.D. =
 3 P.D. =
 4 P.D. =
 ANGLES / WINKEL: ° =
 MATERIAL: FINISH / OBERFLÄCHE / FARBE

PRODUCT SPEC: 108-74003
 APPLICATION SPEC: 114-74001

Customer Drawing / Kundenzeichnung SCALE: 1:1 SHEET: 1 OF 1 REV: AB

STE TE Connectivity

Surface mounted housing side entry
 Sockelgehäuse HD.16-24-64.SG.2.M32.Z