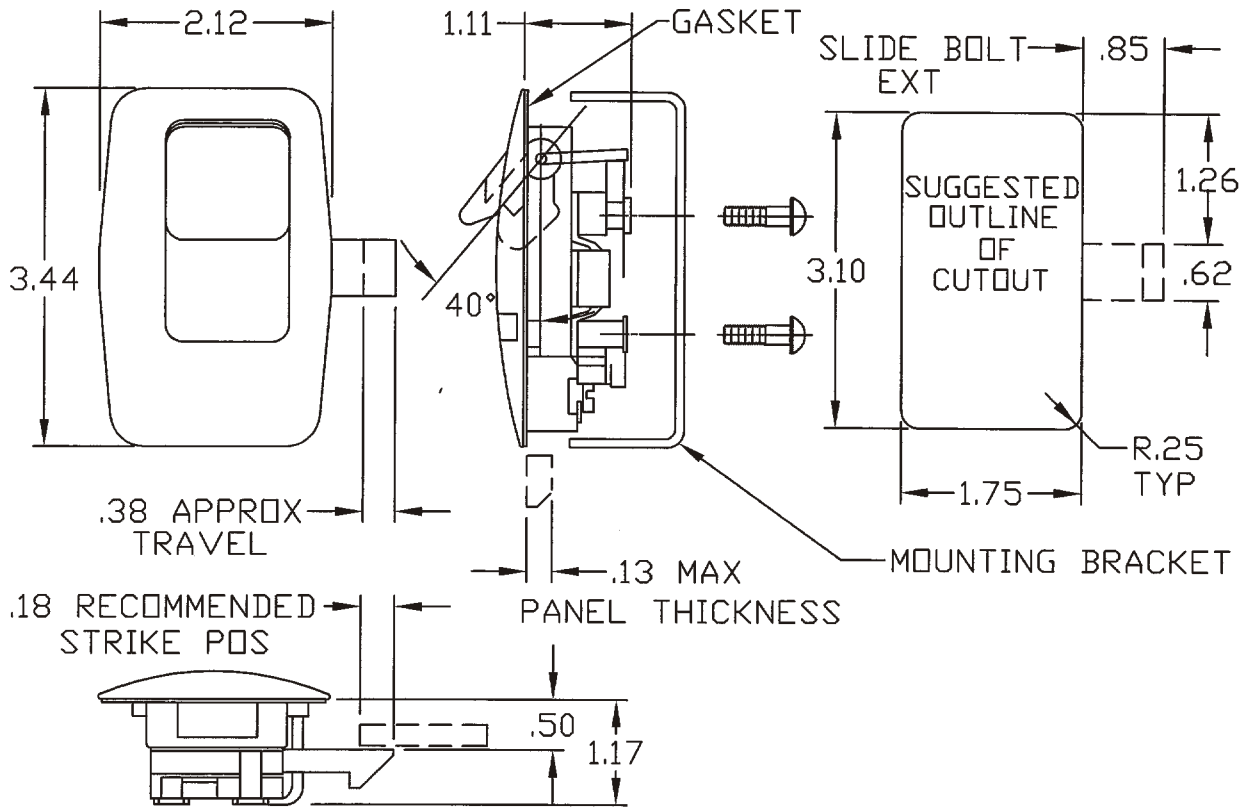


1. PART NUMBER AND CHARACTERISTICS



TE Part No	Rev	Type	Mfr Part No
986075-1	C	Non-Locking	ECL-730-P8-MB
986075-2	C	Key Locking	ECL-730-KP8-MB

- 1.1. All dimensions are nominal unless otherwise specified
- 1.2. Type: Eclipse® series
- 1.3. Material: paddle handle & housing - high-strength, UV stabilized thermoplastic  
metal stampings & fasteners - 300 series stainless steel  
key cylinder (-2 only) - die-cast zinc
2. RECOMMENDED MANUFACTURER  
Eberhard Manufacturing Company  
[www.eberhard.com](http://www.eberhard.com)  
or Tyco Electronics Engineering approved equivalent.

<b>COMMERCIAL ITEM SPECIFICATION</b>		MATERIAL							
		See Note 1.3.							
© 2009 Tyco Electronics Corporation, Harrisburg, PA All International Rights Reserved		FINISH		DIMENSIONS IN INCHES		NO	REV	LOC	DIST
		Matte Black				986075	C	B	31
C	ECR 09-022330	JNB	12OCT09	SHEET 1 OF 1		TITLE <b>LATCH, PADDLE HANDLE</b>			
REV	ENGINEERING CHANGE	CHK	DATE						