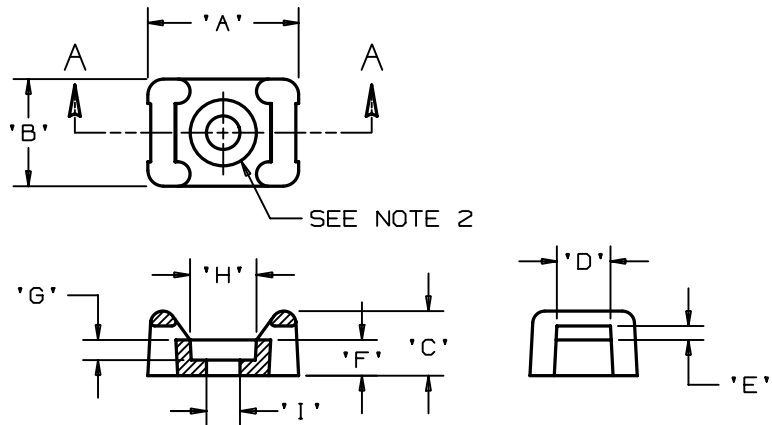


THIS COPY IS PROVIDED ON A RESTRICTED BASIS AND IS NOT TO BE USED IN ANY WAY DETRIMENTAL TO THE INTERESTS OF PANDUIT CORP.

PANDUIT PART NO.*	RECOMMENDED FASTENER	'A'	'B'	'C'	'D' ±0.010 ±(0.25)	'E' +0.020 +(0.51)	'F'	'G' 'REF'	'H' 'REF'	'I' 'REF'	USE WITH THESE CABLE TIE CROSS SECTIONS	WEIGHT (g) lbs/100 pcs.
TM2S8-100	#8 (M4) SCREW	0.590 (14.98)	0.378 (9.6)	0.271 (6.88)	0.215 (5.46)	0.058 (1.5)	0.152 (3.86)	0.102 (2.59)	0.332	0.176	MINIATURE INTERMEDIATE STANDARD	0.065 (29.5)



SECTION A-A

- NOTES:  
 \*1. SEE CURRENT PRICE SHEET FOR PART NUMBER SUFFIX DESIGNATION FOR PACKAGE SIZE.  
 2. HOLE DIMENSIONS SHOULD ACCOMMODATE SPECIFIED RECOMMENDED FASTENER.

DIMENSIONS IN BRACKETS ARE METRIC [ mm ]  
 CAD FILENAME/LAYERS G00239CJ\_PB\_TM2S8\_04



TIE MOUNT - TM2S8-100

REV	DATE	BY	CHK	DESCRIPTION	ECN	R	CUST	SUP
4	1-15-02	LGG		ADDED DIM 'H' & 'I' TO TABLE ADDED 'REF' TO DIM 'G'	GB0239CJ	4		
3	12-21-00	CGSM		REMOVED DIMS 'G' AND 'J', MADE DIM 'H' INTO 'G', ADDED NOTE 2	GB0239CJ	3		
2	11-15-99	JAD		Revised dimension A,C,D,F,H,& J	GB0239CJ	2		
1	6-12-97	JAD		REVISED DATE IN TITLE BLOCK	GB0239CJ	1		
R	03-07-96	MDE		INITIAL RELEASE	GB0239CJ	R		

UNLESS OTHERWISE SPECIFIED, DIMENSIONAL TOLERANCES ARE: (.X) ±0.05 (1.3) (,XXX) ±0.020 (0.51) (,XX) ±		UNLESS OTHERWISE SPECIFIED, ALL DIMENSIONS ARE GIVEN IN INCHES, THIRD ANGLE PROJECTION.	
DRAWN BY MDE	MAT'L: WEATHER RESISTANT POLYPROPELYNE	SCALE NONE	
DATE 3-07-96		DRAWING NO. GB0239CJ	DWG SIZE A
CHK'D			