

Docking frame for 2 modules, fixed moun

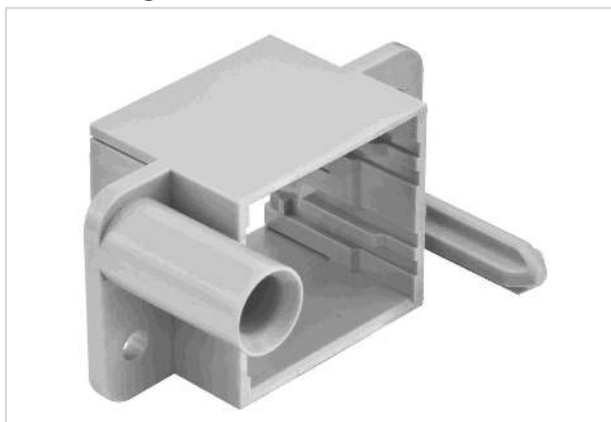


Image is for illustration purposes only. Please refer to product description.

Part number	09 14 006 1711
Specification	Docking frame for 2 modules, fixed moun
HARTING eCatalogue	https://b2b.harting.com/09140061711

Identification

Category	Accessories
Series	Han-Modular®
Type of accessory	Docking frame
Description of the accessory	Fixed for 2 modules a ... b

Technical characteristics

Limiting temperature	-40 ... +125 °C
Mating cycles	≥500
Mating cycles with other HMC components	≥10,000
Degree of protection acc. to IEC 60529	IP20
Lock-in range	±4 mm

Material properties

Material	Polycarbonate (PC)
Material flammability class acc. to UL 94	V-0
RoHS	compliant
ELV status	compliant
China RoHS	e
REACH Annex XVII substances	Not contained
REACH ANNEX XIV substances	Not contained
REACH SVHC substances	Not contained
Fire protection on railway vehicles	EN 45545-2 (2020-08)



Pushing Performance
Since 1945

Material properties

Requirement set with Hazard Levels	R22 (HL 1-3) R23 (HL 1-3)
------------------------------------	------------------------------

Specifications and approvals

Specifications	IEC 60664-1 IEC 61984
----------------	--------------------------

Commercial data

Packaging size	2
Net weight	16 g
Country of origin	Germany
European customs tariff number	85389099
GTIN	5713140020443
eCl@ss	27440206 Module carrier frame for industrial connectors