

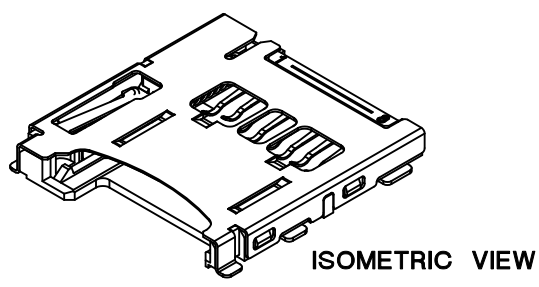
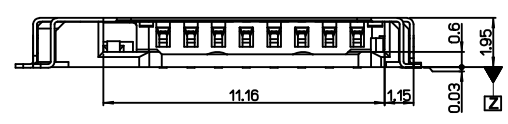
CONNECTOR OUTLINE **RECOMMENDED PCB PATTERN LAYOUT**
 TOLERANCE : ±0.05

NOTES

1. MATERIALS: SEE TABLE
2. FINISHES: SEE TABLE
3. PRODUCT SPECIFICATION : PS-49225-001
4. COPLANARITY OF SOLDER TAILS : 0.1mm MAX.
 MISALIGNMENT OF SOLDER TAIL FROM "Z"
 UPPER DIRECTION 0.05 MAX., LOWER DIRECTION 0.1MAX.
5. PACKAGING SPECIFICATION : PK-49225-201

* Normal DIM. : Limited
 * (DIM.) : Recommend

This connector has been tested for compatibility with both TransFlash and microSD cards, however, as this standard is in transition some specifications from different card makers may differ. Please contact Molex Korea before any design-in to discuss card compatibility issues

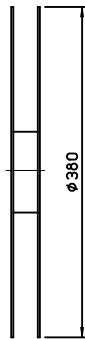
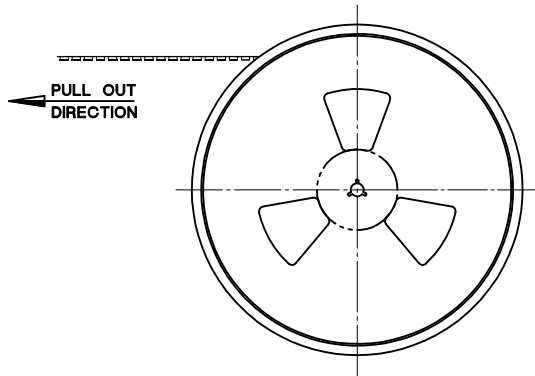


492250821	49225-0821
MATERIAL NO.	ENGINEERING NO.

REVISED EC NO: DRWN: SUNGHYUK.00 2010/02/23 CHKD: YSOOK IM APPR:	DESCRIPTION	QUALITY SYMBOLS	GENERAL TOLERANCES (UNLESS SPECIFIED)		DIMENSION STYLE		SCALE	DESIGN UNITS	THIRD ANGLE PROJECTION
		▼=0 □=0	mm	INCH	MM ONLY		5:1	METRIC	M-SD MEMORY CARD SOCKET P/P.REVERSE, WITH SWT LOW RETENTION FORCE
			4 PLACES ± --- ± ---	3 PLACES ± --- ± ---	DRAWN BY S.H. JOO	DATE 2005/09/14			
			2 PLACES ± 0.15 ± ---	1 PLACE ± 0.20 ± ---	CHECKED BY	DATE	MOLEX INCORPORATED		
ANGULAR ± 1 °			DRAFT WHERE APPLICABLE MUST REMAIN WITHIN DIMENSIONS		APPROVED BY S. J. SEH DATE 2005/09/14		SEE TABLE		M-SD MEMORY CARD SOCKET P/P.REVERSE, WITH SWT LOW RETENTION FORCE MOLEX INCORPORATED SD-49225-201 SHEET NO. 1 OF 3

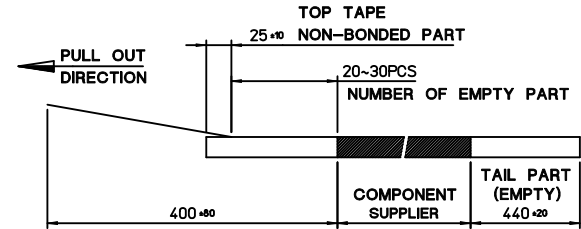
⑨	SPRING	49225-9001	STAINLESS STEEL	
⑧	PIN ROD	49225-9002	STAINLESS STEEL	
⑦	STOPPER TERMINAL	49772-8003	PHOS.-BRONZE	PURE-Sn over Ni
⑥	GND. TERMINAL	49771-8003	PHOS.-BRONZE	Selective-Au over Ni
⑤	SWITCH TERMINAL	49770-8003	PHOS.-BRONZE	Selective-Au over Ni
④	HEART CAM	49355-0001	LIQUID CRYSTAL POLYMER	Natural Color
③	HOUSING	49225-0891	LIQUID CRYSTAL POLYMER	
②	METAL SHELL	49769-5003	STAINLESS STEEL	Selective-Au over Ni
①	CONTACT TERMINAL 1,2,3	49768-8*30	PHOS.-BRONZE	Selective-Au over Ni
NO.	DESCRIPTION	ENGINEERING NO.	MATERIALS	FINISHES

REVISED EC NO: DRWN: SUNGHYUK JOO 2010/02/23 CHKD: YSOOK IM APPR:	DESCRIPTION REV	QUALITY SYMBOLS	GENERAL TOLERANCES (UNLESS SPECIFIED)	DIMENSION STYLE	SCALE	DESIGN UNITS	THIRD ANGLE PROJECTION
		▽=0 ∇=0	mm INCH	MM ONLY	5:1	METRIC	
		4 PLACES ± --- ± --- 3 PLACES ± --- ± --- 2 PLACES ± 0.15 ± --- 1 PLACE ± 0.20 ± --- ANGULAR ± 1 °	DRAWN BY: S.H. JOO DATE: 2005/09/14 CHECKED BY: DATE:	TITLE			
		DRAFT WHERE APPLICABLE MUST REMAIN WITHIN DIMENSIONS	APPROVED BY: S.J. SEH DATE: 2005/09/14 MATERIAL NO.	M-SD MEMORY CARD SOCKET P/P.REVERSE, WITH SWT LOW RETENTION FORCE MOLEX INCORPORATED DOCUMENT NO. SD-49225-201			
		SIZE	SEE TABLE		SHEET NO.		2 OF 3
		THIS DRAWING CONTAINS INFORMATION THAT IS PROPRIETARY TO MOLEX INCORPORATED AND SHOULD NOT BE USED WITHOUT WRITTEN PERMISSION					



NOTES

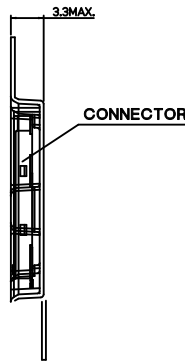
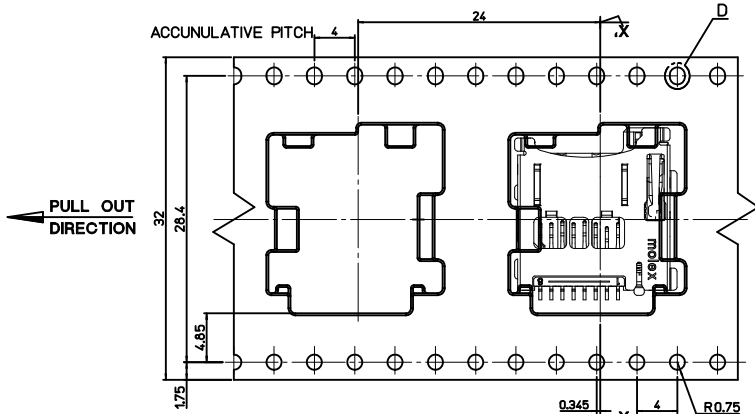
- 1. QUANTITY OF CONNECTORS : 1,100PCS/REEL
- 2. LEAD LENGTH



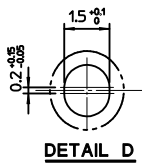
- 3. PEELING OFF FORCE OF COVER TAPE : 0.1N~0.59N(10.2GF~60GF)
(PEELING DIRECTION AS SHOW IN FOLLOW FIG.)
- PEELING OFF SPEED : 300mm/MIn.(Ref.)



35902-1011	35908-1003	35902-2108	49225-0811	492250817	49225-0817	8
COVER TAPE	REEL	EMBOSSSED TAPE	CONNECTOR	MATERIAL NO.	ENG. NO.	CKT



DIRECTION OF CONNECTOR IN EMBOSSSED TAPE



REVISED	EC NO: DRWN: SUNGHYUK.00 2010/02/23 CHKD: YS00KIM APPR:	DESCRIPTION	QUALITY SYMBOLS	GENERAL TOLERANCES (UNLESS SPECIFIED)	DIMENSION STYLE	SCALE	DESIGN UNITS	THIRD ANGLE PROJECTION												
			<p>▽=0</p> <p>∠=0</p>	<table border="1"> <thead> <tr> <th></th> <th>mm</th> <th>INCH</th> </tr> </thead> <tbody> <tr> <td>4 PLACES</td> <td>± ---</td> <td>± ---</td> </tr> <tr> <td>3 PLACES</td> <td>± ---</td> <td>± ---</td> </tr> <tr> <td>2 PLACES</td> <td>± 0.15</td> <td>± ---</td> </tr> <tr> <td>1 PLACE</td> <td>± 0.20</td> <td>± ---</td> </tr> </tbody> </table> <p>ANGULAR ± 1 °</p>		mm	INCH	4 PLACES	± ---	± ---	3 PLACES	± ---	± ---	2 PLACES	± 0.15	± ---	1 PLACE	± 0.20	± ---	MM ONLY
	mm	INCH																		
4 PLACES	± ---	± ---																		
3 PLACES	± ---	± ---																		
2 PLACES	± 0.15	± ---																		
1 PLACE	± 0.20	± ---																		
				DRAFT WHERE APPLICABLE MUST REMAIN WITHIN DIMENSIONS	DRAWN BY: S.H. JOO CHECKED BY: APPROVED BY: S.J. SEH MATERIAL NO.: SEE TABLE DATE: 2005/09/14	TITLE: M-SD MEMORY CARD SOCKET P/P.REVERSE.WITH SWT LOW RETENTION FORCE MOLEX INCORPORATED DOCUMENT NO.: SD-49225-201 SHEET NO.: 3 OF 3														
					SIZE: A3	THIS DRAWING CONTAINS INFORMATION THAT IS PROPRIETARY TO MOLEX INCORPORATED AND SHOULD NOT BE USED WITHOUT WRITTEN PERMISSION														

9	SPRING	49225-9001	STAINLESS STEEL	
8	PIN ROD	49225-9002	STAINLESS STEEL	
7	STOPPER TERMINAL	49772-8003	PHOS.-BRONZE	PURE-Sn over Ni
6	GND. TERMINAL	49771-8003	PHOS.-BRONZE	Selective-Au over Ni
5	SWITCH TERMINAL	49770-8003	PHOS.-BRONZE	Selective-Au over Ni
4	HEART CAM	49355-0001	LIQUID CRYSTAL POLYMER	Natural Color
3	HOUSING	49225-0891	LIQUID CRYSTAL POLYMER	
2	METAL SHELL	49769-5003	STAINLESS STEEL	Selective-Au over Ni
1	CONTACT TERMINAL 1,2,3	49768-8*30	PHOS.-BRONZE	Selective-Au over Ni
NO.	DESCRIPTION	ENGINEERING NO.	MATERIALS	FINISHES

DWG. NO. SD-49225-201
 SIMILAR ITEM
 PROJECT NO. C
 B
 DO NOT SCALE DRAWING DIMENSION IN METRIC

F
 E
 D
 C
 B
 A

NEW RELEASE ECN NO. KOR2007-0077 DRWN: S.H.JOO 08/12/29 CHK: APPR: S.J.SEH	QUALITY SYMBOLS	GENERAL TOLERANCES: (UNLESS SPECIFIED)	SCALE 5 / 1	DESIGN UNITS <input checked="" type="checkbox"/> mm <input type="checkbox"/> INCH	<input type="checkbox"/> THIRD ANGLE PROJECTION <input type="checkbox"/> DIMENSIONS: <input type="checkbox"/> mm <input type="checkbox"/> INCH <input checked="" type="checkbox"/> mm ONLY	TITLE: microSD MEMORY CARD SOCKET PUSH-PUSH / REVERSE TYPE / WITH SWITCH (LOW RETENTION FORCE VERSION)	
	MAJOR $\nabla = 0$ CRITICAL $\nabla C = 0$	4 PLACES ± 0.1 mm \pm INCH 3 PLACES ± 0.15 mm \pm INCH 2 PLACES ± 0.2 mm \pm INCH 1 PLACE ± 0.2 mm \pm INCH	DRAWN BY & DATE S.H.JOO 05/09/14 CHECKED BY & DATE S.H.JOO APPROVED BY & DATE S.J.SEH	MATERIAL NO. SEE TABLE DRAWING NO. SD-49225-201			
	REV	DESCRIPTION	ANGULAR: \pm °	CAD FILENAME SD49225002.MI	MATERIAL NO. SEE TABLE	DRAWING NO. SD-49225-201	SHEET NO. 1 OF 2
	A	DRAFT WHERE APPLICABLE MUST REMAIN WITHIN DIMENSIONS		THIS DRAWING CONTAINS INFORMATION THAT IS PROPRIETARY TO MOLEX INCORPORATED AND SHOULD NOT BE USED WITHOUT WRITTEN PERMISSION.			SIZE B