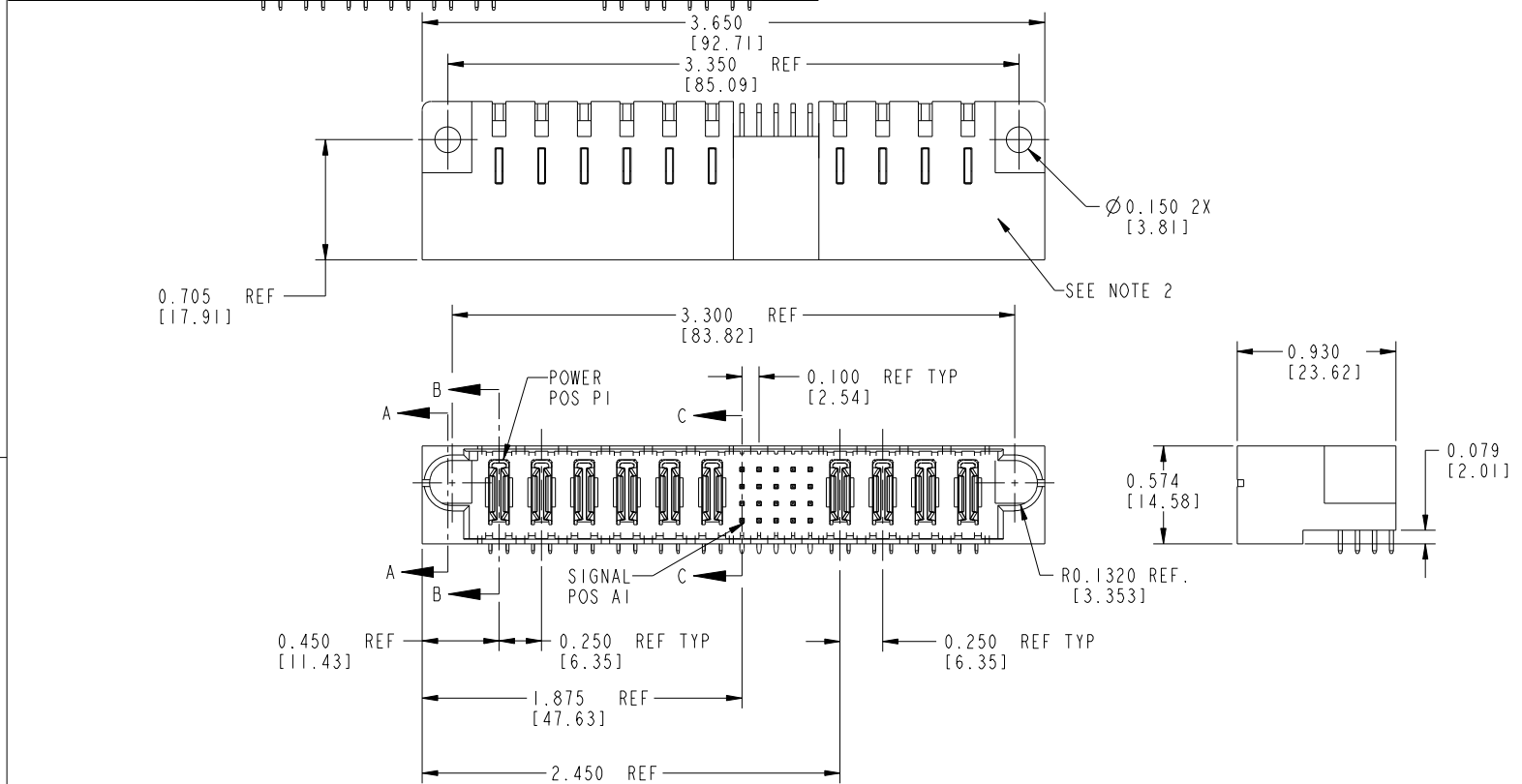
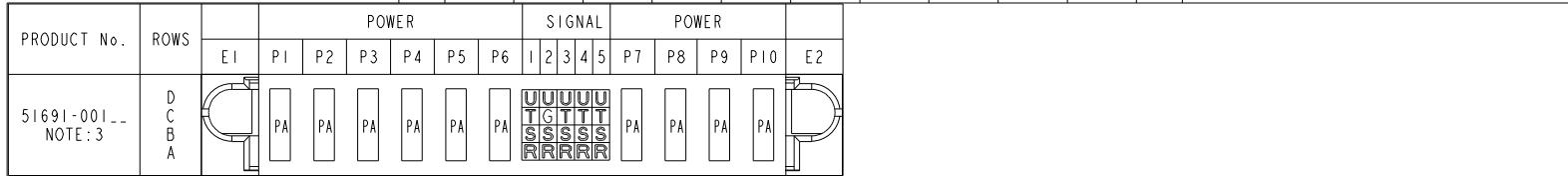


Tous droits strictement réservés. Reproduction ou communication à des tiers interdite, sous quelque forme que ce soit sans autorisation écrite du propriétaire. Propriété de c FCI. Droits de reproduction FCI.



All rights strictly reserved. Reproduction or issue to third parties in any form whatever is not permitted without written authority from the proprietor. Property of FCI. Copyright FCI.



CODE	DIM "M"	CONTACT TYPE
	MATING LENGTH	
G	0.220 [5.59]	SIGNAL
R	0.270 [6.86]	SIGNAL
S	0.270 [6.86]	SIGNAL
T	0.270 [6.86]	SIGNAL
U	0.270 [6.86]	SIGNAL
PA	N/A [N/A]	POWER

mat'l code				SEE NOTE 1		tolerances unless otherwise specified	
ltr	ecn no.	dr	date	linear	.XX±.01/.X±.3	projection	
A	V02393	JRW	10-27-00		.XXX±.005/.X±.13	INCH / MM	
B	V12544	DAI	02-08-02	angles	.XXX±.0020/.XXX±.051	scale	1:1
C	DG05-0375	GuoJW	10/07/05		0°±2°		
D	DG06-0011	CS	01/09/06	dr	E. KORFF 04-07-00		
E	DG08-0253	SH	09/13/08	enr	J. BROWN 04-07-00		
				chr	J. BROWN 04-07-00		
				appd	J. BROWN 04-07-00		

CUSTOMER COPY		FCI		www.fciconnect.com	
title		6P + 20S + 4P			
RIGHT ANGLE SOLDER HEADER		product family PwrBlade code 213			
size		dwg no 51691		SHEET 1 OF 4	

form no. 7530-001-103

PRO/E

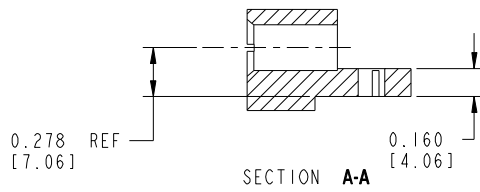
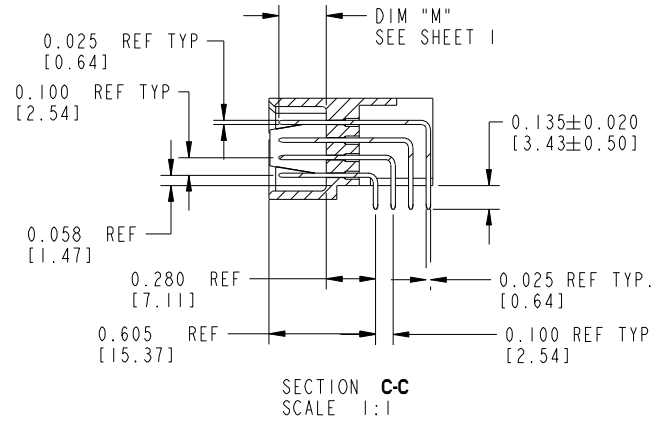
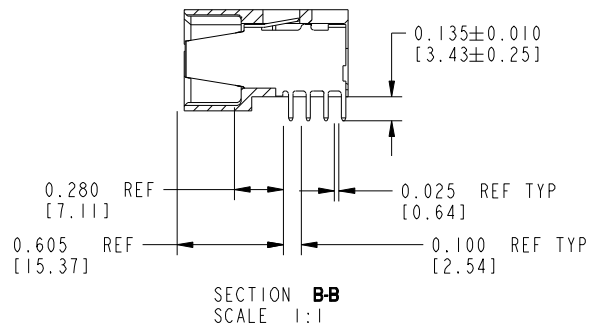
cage code 22526

Tous droits strictement réservés. Reproduction ou communication à des tiers interdite, sous quelque forme que ce soit sans autorisation écrite du propriétaire. Propriété de c.FCI. Droits de reproduction FCI.

All rights strictly reserved. Reproduction or issue to third parties in any form whatever is not permitted without written authority from the proprietor. Property of FCI. Copyright FCI.



PRODUCT NUMBER
51691-001--
NOTE: 3



mat'l code		SEE NOTE 1		tolerances unless otherwise specified		CUSTOMER COPY		FCI		www.fciconnect.com	
ltr	ecn no.	dr	date	linear	.XX±.01/.X±.3	projection		title			
E					.XXX±.005/.X±.13			6P + 20S + 4P RIGHT ANGLE SOLDER HEADER			
				angles	.XXX±.0020/.XXX±.051	INCH / MM	product family	PwrBlade	code		
				dr	0°±2°	← →	size	dwg no	213		
				enr	E. KORFF 04-07-00	scale	51691		SHEET 2		
				chr	J. BROWN 04-07-00	1:1					
				appd	J. BROWN 04-07-00						
sheet index	revision sheet										

form no. 7530-001-103

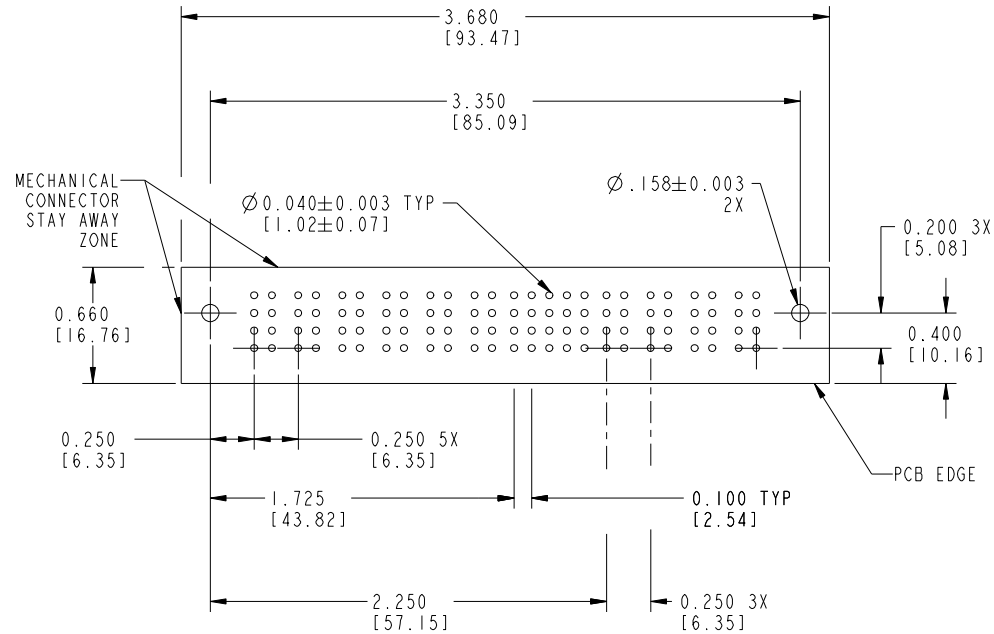
cage code 22526

Tous droits strictement réservés. Reproduction ou communication à des tiers interdite, sous quelque forme que ce soit sans autorisation écrite du propriétaire. Propriété de c FCI. Droits de reproduction FCI.



All rights strictly reserved. Reproduction or issue to third parties in any form whatever is not permitted without written authority from the proprietor. Property of FCI. Copyright FCI.

PRODUCT NUMBER
51691-001--
NOTE: 3



RECOMMENDED PCB LAYOUT

mat'l code				SEE NOTE 1		tolerances unless otherwise specified		CUSTOMER COPY		 www.fciconnect.com	
ltr	ecn no.	dr	date	linear	.XX±.01/.X±.3		projection			title	
E					.XXX±.005/.X±.13					6P + 20S + 4P	
				angles	.XXX±.0020/.XXX±.051		INCH / MM		RIGHT ANGLE SOLDER HEADER		
					0°±2°				product family		
				dr	E. KORFF	04-07-00	scale		PwrBlade	code	
				enr	J. BROWN	04-07-00	1:1		size	213	
				chr	J. BROWN	04-07-00	A		dwg no	SHEET	
				appd	J. BROWN	04-07-00			51691	3	
sheet index		revision sheet								B	

form no. 7530-001-103

cage code 22526


Tous droits strictement réservés. Reproduction ou communication à des tiers interdite sous quelque forme que ce soit sans autorisation écrite du propriétaire. Propriété de c.FCI. Droits de reproduction FCI.

PRODUCT NUMBER
51691-001--
NOTE: 3

CONNECTORS - NOTES:

- ① HOUSING MATERIAL: UL 94 V-0 GLASS FILLED HIGH TEMP THERMOPLASTIC, FLAME RETARDANT PER UL94 V-0
SIGNAL PIN MATERIAL: PHOS. BRONZE
POWER CONTACT MATERIAL: COPPER ALLOY
- ② MANUFACTURER'S NAME, P/N, AND DATE CODE TO APPEAR ON THIS SURFACE
3. PRODUCT SPECIFICATION GS-12-149.

PCB - NOTES

4. ALL DIMENSIONS ARE BASIC UNLESS OTHERWISE SPECIFIED.
5. ALL THROUGH HOLES ARE LOCATED WITH A TRUE POSITION OF .004
6. ALL HOLE DIAMETERS ARE FINISHED HOLE SIZE
7. \varnothing .158 THROUGH HOLES ARE UNPLATED
8. \varnothing .0453/1.151 DRILLED HOLES
PLATED WITH .0003/.007 MIN SnPb
OVER .001/1.03 to .003/.08 Cu PLATING TO ACHIEVE
A .040±.003/1.02±.08 HOLE
9. SEE ITEM X1 & X2 IN PRINT 10064183 FOR PLATING SPEC OF 51569-001 AND 51569-001LF RESPECTIVELY
10. A  SYMBOL WILL BE NEXT TO ANY DIMENSION, VIEW, OR NOTE WHICH HAS BEEN MODIFIED WITH CURRENT DRAWING VERSION.



All rights strictly reserved. Reproduction or issue to third parties in any form whatever is not permitted without written authority from the proprietor. Property of FCI. Copyright FCI.

mat'l code		SEE NOTE 1		tolerances unless otherwise specified		CUSTOMER		FCI		www.fciconnect.com	
ltr	ecn no.	dr	date	linear	.XX±.01/.X±.3	COPY		projection	title		
E					.XXX±.005/.X±.13	6P + 20S + 4P			RIGHT ANGLE SOLDER HEADER		
				angles	.XXX±.0020/.XXX±.051	INCH / MM		product family	PwrBlade		code
					0°±2°	← →			size		213
				dr	E. KORFF 04-07-00	scale		dwg no		sheet	
				enr	J. BROWN 04-07-00	1:1		51691		4	
				chr	J. BROWN 04-07-00						
				appd	J. BROWN 04-07-00						
sheet index		revision sheet									

form no. 7530-001-103

cage code 22526