

# Sensor/Actuator cable - SAC-3P-M12MS/0,6-PUR/A-1L-Z - 1400769

Please be informed that the data shown in this PDF Document is generated from our Online Catalog. Please find the complete data in the user's documentation. Our General Terms of Use for Downloads are valid (<http://download.phoenixcontact.com>)



Sensor/Actuator cable, PUR halogen-free, Black-gray RAL 7021, Plug straight M12, A-coded, on A valve plug, with 1 LED, connected with Z diode, Cable length: 0.6 m

The illustration shows the SPEEDCON version

## Key commercial data

|                        |   |
|------------------------|---|
| Packing unit           | 0   |
| Minimum order quantity | 1   |
| GTIN                   | <br>4 046356 509510 |
| Custom tariff number   | 85444290  |
| Country of origin      | POLAND  |

## Technical data

### General data

|                       |       |
|-----------------------|-------|
| Rated current at 40°C | 4 A   |
| Rated voltage         | 24 V  |
| Length of cable       | 0.6 m |

### General characteristics

|                              |         |
|------------------------------|---------|
| Surge voltage category       | III     |
| Pollution degree             | 3       |
| Degree of protection         | IP65/67 |
| Insertion/withdrawal cycles  | ≥ 100   |
| Status display               | 1 LED   |
| Protective circuit/component | Z diode |

### Conductor data

|                           |                        |
|---------------------------|------------------------|
| Cable type                | PUR halogen-free black |
| Cable type (abbreviation) | PUR                    |
| Cable abbreviation        | Li9Y11Y-HF             |
| UL AWM Style              | 20549                  |
| Conductor cross section   | 3x 0.5 mm <sup>2</sup> |
| AWG signal line           | 20                     |

# Sensor/Actuator cable - SAC-3P-M12MS/0,6-PUR/A-1L-Z - 1400769

## Technical data

### Conductor data

|   |  |
|---|--|
| Conductor structure signal line             | 28x 0.15 mm  |
| Core diameter including insulation          | 1.5 mm ±0.05 mm (signal line)                              |
| External cable diameter                     | 4.5 mm ± 0.2 mm  |
| Wire colors                                 | Black 1, black 2, green/yellow                             |
| External sheath, color                      | Black-gray RAL 7021  |
| Insulation resistance                       | min. 20 MΩ*km  |
| Conductor resistance                        | 39 Ω/km (at 20 °C)   |
| Nominal voltage, conductor                  | ≤ 300 V  |
| Test voltage, conductor                     | ≥ 1200 V   |
| Overall twist                               | 3 wires, twisted   |
| Outer sheath, material                      | PUR  |
| Material conductor insulation               | PP   |
| Conductor material                          | Bare Cu litz wires   |
| Smallest bending radius, fixed installation | 22.5 mm  |
| Number of bending cycles                    | 15000000   |
| Bending radius                              | 50 mm  |
| Traversing path                             | 0.9 m  |
| Traversing rate                             | 5 m/s  |
| Acceleration                                | 30 m/s <sup>2</sup>  |
| Ambient temperature (operation)             | -40 °C ... 80 °C (cable, fixed installation)               |
| Ambient temperature (operation)             | -20 °C ... 80 °C (cable, flexible installation)            |
| Flame resistance                            | According to DIN VDE 0482                                  |
| Flame resistance                            | According to DIN EN 50265-2-1                              |
| Halogen-free                                | in accordance with DIN VDE 0472 part 815                   |
| Other resistance                            | Largely oil-resistant                                      |
| Other resistance                            | partly UV-resistant in accordance with DIN EN ISO 4892-2-A |

## Classifications

### eclass

|            |          |
|------------|----------|
| eCl@ss 4.0 | 27060306 |
| eCl@ss 4.1 | 27060306 |
| eCl@ss 5.0 | 27061801 |
| eCl@ss 5.1 | 27061801 |
| eCl@ss 6.0 | 27061801 |
| eCl@ss 7.0 | 27061801 |

### etim

|          |          |
|----------|----------|
| ETIM 3.0 | EC001855 |
| ETIM 4.0 | EC001855 |

# Sensor/Actuator cable - SAC-3P-M12MS/0,6-PUR/A-1L-Z - 1400769

## Classifications

unspsc

|               |          |
|---------------|----------|
| UNSPSC 6.01   | 31251501 |
| UNSPSC 7.0901 | 31251501 |
| UNSPSC 11     | 31251501 |
| UNSPSC 12.01  | 31251501 |
| UNSPSC 13.2   | 31251501 |

## Accessories

Accessories

Assembly

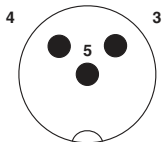
Screw - SAC-V-SCREW-M3-29 KNURL - 1403779



Fillister head screw with plastic knurl, M3 x 40

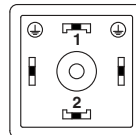
## Drawings

Schematic diagram



Pin assignment M12 plug, 3-pos., valve connector

Schematic diagram



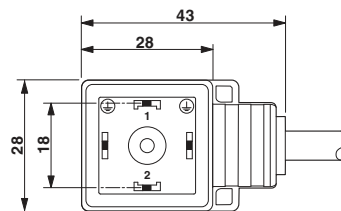
Valve connector pin assignment, type A

Cable cross section



PUR halogen-free black [PUR]

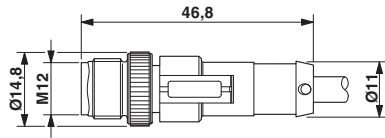
Dimensioned drawing



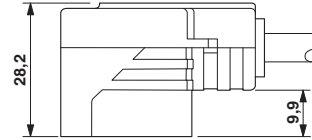
Valve plug, type A

# Sensor/Actuator cable - SAC-3P-M12MS/0,6-PUR/A-1L-Z - 1400769

Dimensioned drawing



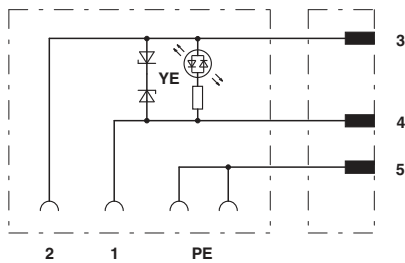
Dimensioned drawing



Valve connector, type A, side view

M12 x 1 male connector, straight

Circuit diagram



Contact assignment of M12 plug and valve connector