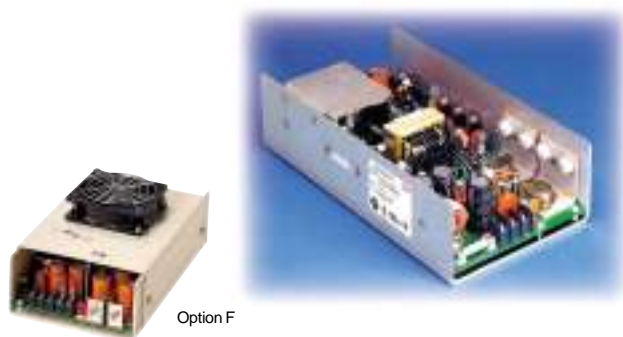


# DCX-350 Commercial

## Multiple Output 48 Vdc Input



### FEATURES:

- Over 3 watts/in<sup>3</sup> power density
- Meets international safety requirements
- All outputs regulated  $\pm 1\%$
- High peak currents for motor starting
- System air and self-cooling options
- Available in dual ac input range

### SPECIFICATIONS:

#### Input

##### Dc Input

DCX models 40.8-60 Vdc range, internally fused for 15 A.

##### Efficiency

70 to 75% typical.

#### OUTPUT

##### Adjustability

All outputs user adjustable  $\pm 5\%$  minimum.

##### Line & Load Regulation

$\pm 2\%$  over dc input range and 0 to 100% load change, except DPS models hold  $\pm 3\%$  on +5 V output (preprogrammed slope). Multiple output units require a minimum load of 10% on the +5 V output when drawing full load on the auxiliary outputs.

##### Ripple & Noise

Less than 1% p-p or 100 mV, whichever is greater.

##### Remote Sense

(Output #1): Compensates for 250 mV total line drop. Open sense lead protection. (See Redundancy, below.)

##### Temperature Coefficient

0.02% per degree C.

##### Stability

0.1% over 8 hours after 30 minutes warm-up.

##### Transient Response

Output voltage returns to within 1% in less than 500  $\mu$ s for a 50% load change. Peak transient does not exceed 5%.

##### Overload Protection

All outputs are protected against overload and short circuit. Automatic recovery upon removal of fault.

##### Overvoltage Protection (Output #1)

Protects load against power supply induced overvoltage. Trip point is factory set so that output voltage cannot exceed 136% of nominal.

##### Peak Output Current

Dual current ratings define continuous and peak currents. The peak current shown can be delivered for a maximum period of 30 seconds.

##### Remote Inhibit

Contact closure to the negative sense line drops output power to nominal zero.

##### Reverse Voltage

Protected against reverse voltage up to supply current rating.

### ENVIRONMENTAL

#### Thermal Protection

Shuts down power supply if overheated. Automatic recovery.

#### Temperature Range

0° to 50°C at full ratings.

#### Safety Agencies

Most models are approved to UL1950; CSA 22.2 #234; IEC 950 and TÜV EN60950, Class 1 SELV., CE 72/23/EEC/93/68EEC (low voltage directive).

#### Conducted RFI

Meets FCC Part 15, Subpart J, Class A; EN55022 Class B; CISPR 22 Class B.

#### Cooling

30 cfm required to achieve full ratings.

#### Output Isolation

Isolated from ground 50 Vdc, except 100 Vdc for models rated 48 Vdc output.

### OPTIONS

#### Option "F"

Fan/Cover Assembly: Cover with integral ball-bearing fan provides proper cooling to achieve full ratings at 50°C ambient temperature.


### DC INPUT

FUNCTION	-48 Vac	+24 Vdc	CONNECTOR
TB1(-)	-48 Vdc Input	+24 Vdc Return	Barrier strip #6-32 screws 3/8" centers
TB1(+)	-48 Vdc Return	+24 Vdc Return	
TB1-(GND)	Safety Ground	Safety Ground	

### DC OUTPUT

FUNCTION	LOCATION	NOTES	CONNECTOR
Output #1	Terminal marked +V	Main Output	Bus bars #10-32 screws
	Terminal marked -V	Rtn (Common)	
Output #2	TB2-3	Rtn (Common)	Barrier strip #6-32 screws 3/8" centers
(If provided)	TB2-4		
Output #3	TB2-5	Rtn (Common)	
(If provided)	TB2-4		
Output #4	TB2-1	(+) Floating Output	
(If provided)	TB2-2	(-) Floating Output	

### STATUS AND CONTROL

FUNCTION	LOCATION	NOTES	CONNECTOR
Remote Sense	J1-1 (+S)	Output #1 Sense	AMP MTA type
	J1-2 (-S)	Output #1 Sense Rtn	#640456-4 pin
DC Power Good*	J1-3 	Reference to J1-2	
Inhibit	J1-4 (IH)	Short to J1-2	header (locking)

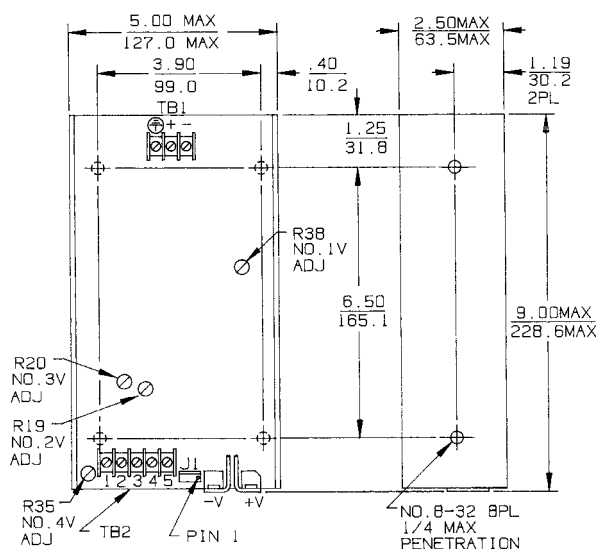
\*Optional function

# DCX-350 Commercial 350 Watt Multiple Output

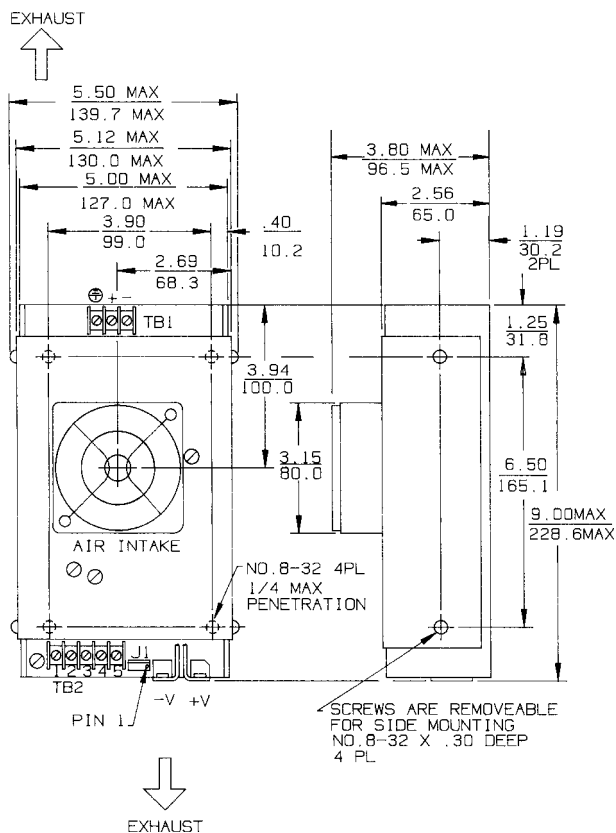
Commercial Model	Power Out	Output No.	Output	Current	Total Regulation
DCX-354-1205	350	1	+5 V	50 A	1%
DCX-354-1205F		2	+12 V	8/12 A pk	1%
		3	-12 V	4 A	1%
		4	5.2 V	2 A	1%

## DCX-350 MECHANICAL SPECIFICATIONS:

**DCX-350**  
3.2 lb - 1.5 kg



**DCX-350 with Option F**  
3.8 lb - 1.7 kg



Dimensions: Inches  
Millimeters



Condor D.C. Power Supplies, Inc., 2311 Statham Parkway, Oxnard, CA 93033  
800-235-5929 • 805-486-4565 • FAX 805-487-8911 • www.condorpower.com