

CABLE 184 RF: HIROSE U.FL + SMA STRAIGHT BULKHEAD JACK WITH O-RING RATED TO IP67/68 + MULTIPLE CABLE SIZES

SPECIFICATIONS :

- HIROSE U.FL PLUG, P/N: FOR $\phi 1.37\text{MM}$ CABLE: U.FL-LP-088.
FOR $\phi 1.13\text{MM}$ CABLE: U.FL-LP-068.
FOR $\phi 1.32\text{MM DS}$ CABLE: U.FL-LP-066.
- COAXIAL CABLE, SEE P/N OPTIONS.
- SMA STRAIGHT BULKHEAD JACK WITH O-RING RATED TO IP67/68, P/N: RFCT-SMA002-F78.

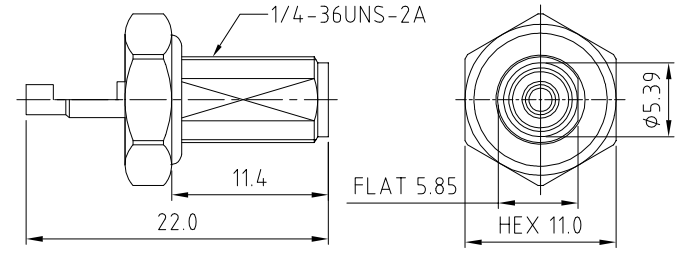
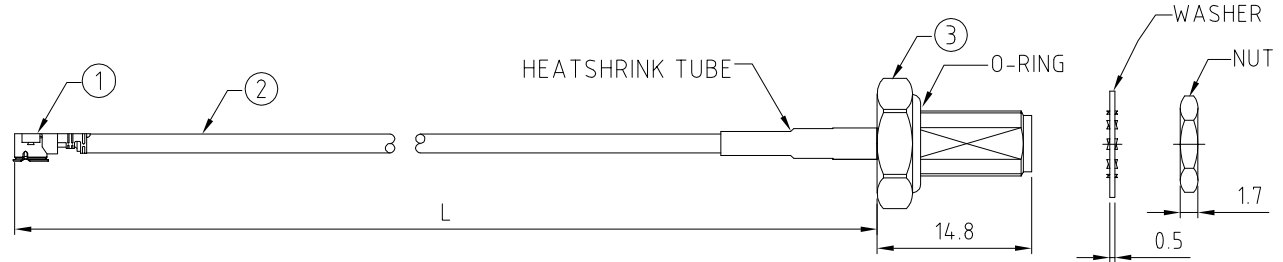
USAGE PRECAUTIONS: CABLES USING 'MICRO' COAX ARE DELICATE:
 (i) HANDLE WITH CARE.
 (ii) DO NOT TWIST; APPLY EXCESSIVE FORCES OR SHARP BENDS TO THE CABLE. DO NOT FORCEFULLY DEFORM WIRES.
 (iii) CONSULT CONNECTOR MANUFACTURER'S DATASHEETS FOR DETAILED NOTES ON HANDLING INSTRUCTIONS.

ENVIRONMENTAL:

- A. BULKHEAD MOUNTED CONNECTOR (RFCT-SMA002-F78) TESTED TO THE FOLLOWING SPECIFICATION:
- IP6X - DUST TIGHT - NO PARTICLE INGRESS.
 - IPX7 WATERPROOF FOR 30 MINUTES UP TO 1 METER UNDERWATER.
 - IPX8 WATERPROOF FOR 48 HOURS AT 1 METER UNDERWATER.
 - IPX8 WATERPROOF FOR 12 HOURS AT 5 METERS UNDERWATER.
 - PRESSURE TEST - 1 BAR FOR 10 SECONDS.

NOTES:

- THE ORIENTATION OF CONNECTORS ON DRAWING IS FOR REFERENCE ONLY, IF THE ORDER IS LEFT BLANK THE CONNECTOR WILL NOT HAVE FIXED ORIENTATION.
- FIXED ORIENTATION IS SUGGESTED FOR CABLE LENGTH 25MM TO 100MM. PLEASE SPECIFY THE FIXED ORIENTATIONS FROM THE ORDER CODE (F1, F2, ETC)
- CONTACT GRADCONN IF THE ORIENTATION YOU REQUIRE IS NOT SHOWN.
- WORKING FREQUENCY RANGE: DC-3GHz.
- OPERATING TEMPERATURE: -40°C TO +85°C.
- IMPEDANCE: 50 OHM.



HOW TO ORDER

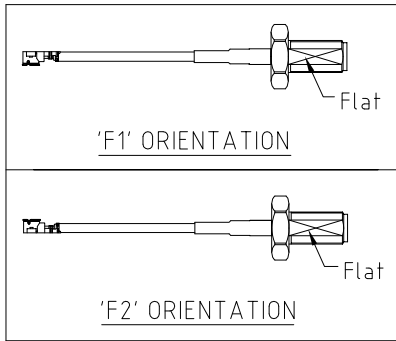
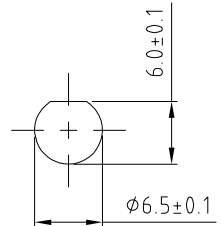
CABLE 184 RF - X X X - X X - X - X - X

"L" LENGTH IN MM:
 eg: 100MM = 100
 (MIN. 050-MAX.400)
 STANDARD = 100, 150, 200
 Tolerance: 50-200mm: $\pm 5\text{mm}$.
 201-400mm: $\pm 7\text{mm}$.

- HEAT SHRINK TUBE COLOR OPTIONS:
 BLANK = BLACK (STANDARD)
 B = BLUE
- CABLE SIZE OPTIONS:
 1 = $\phi 1.37\text{MM}$ CABLE, COLOR: BLACK.
 2 = $\phi 1.13\text{MM}$ CABLE, COLOR: GRAY.
 3 = $\phi 1.32\text{MM DS}$ CABLE, COLOR: GRAY

- WASHER AND NUT OPTIONS:
 BLANK = SEPARATELY PACKED (STANDARD)
 A = ALL ASSEMBLED WITH CONNECTOR

RECOMMENDED SMA MOUNTING HOLE



ORIENTATION OPTIONS:
 BLANK = DOES NOT HAVE A FIXED ORIENTATION
 F1 = U.FL CONNECTION DOWN (L=25-200MM)
 F2 = U.FL CONNECTION UP (L=25-200MM)
 (SEE NOTES 1, 2, 3 AND DIAGRAMS FOR MORE INFORMATION)

REV. DATE & DRN	10 28/07/14 - NYW RELEASE
11 23/07/15 - NYW	UPDATE SMA PART NUMBER
12	ADD IP67/68 RATING INFO
13	16/06/16 - NYW
14	26/06/17 - NYW
15	28/04/20 - CC
16	03/07/21 NYW
	AMEND U.FL P/N FOR 132DS CABLE.
	ADD NOTES 5 & 6

Scale: NTS	THIRD ANGLE	Unstated Tolerances:
Drawn: CC		X ± 0.2
App'd: XXX	Title CABLE ASSEMBLY	XX ± 0.1
Date: 3 DEC '21	Revision: 16	XXX ± 0.05
	Unit: mm	ANGLES ± 5



IP67/68 Rated Cables



www.gradconn.com

Type: Cable 184 RF
CABLE 184 RF
Drawing Number:
Sheet 1 of 1
Drawing © E and O E