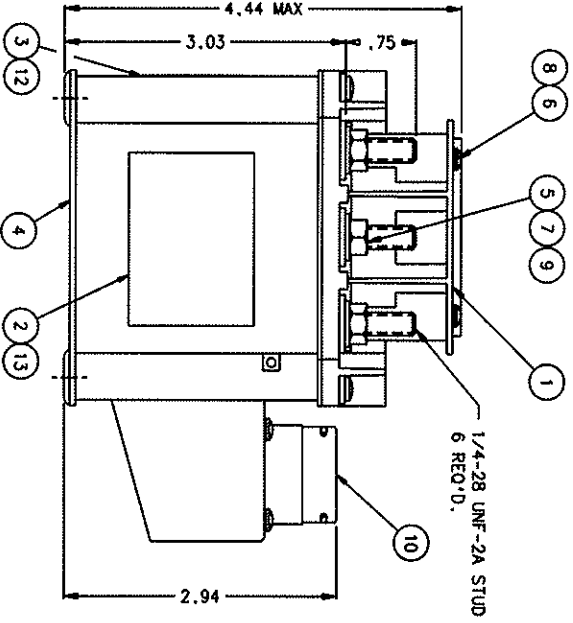
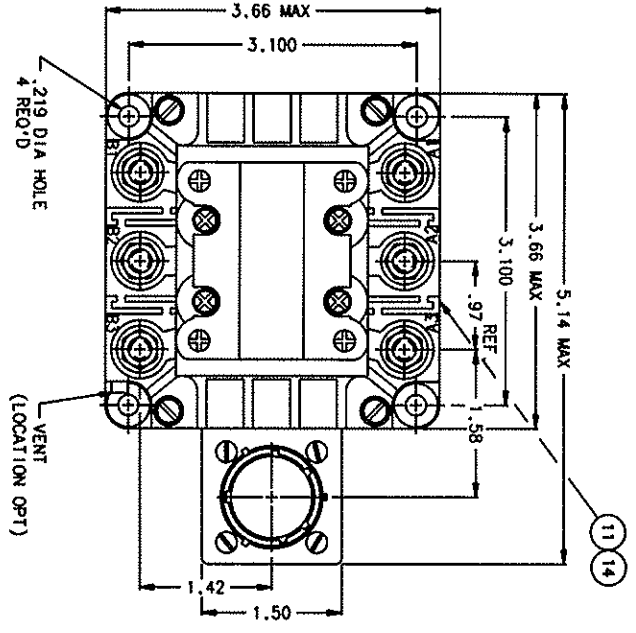


FAA/PMA

REV.	DATE	APPROVED	DESCRIPTION
1	99/04/07	RS	REDRAWN, FIND NOS 12-14 ADDED
2	00/02/17	RS	BALLOON 11 WAS 2.51 & .93 REMOVED

REV.	DATE	APPROVED	DESCRIPTION
1	99/04/07	RS	REDRAWN, FIND NOS 12-14 ADDED
2	00/02/17	RS	BALLOON 11 WAS 2.51 & .93 REMOVED



- NOTES:
1. TERMINAL COVER ITEM NO. 1 REMOVED FROM TOP VIEW.
 2. MOUNTING SURFACE SHALL PROVIDE ELECTRICAL GROUND.
 3. TRANSIENTS LIMITED TO ±42 VDC.

CONSTRUCTION
 MAIN CONTACTS
 CONFIGURATION
 VOLTAGE
 CURRENT RES.
 RES.
 RES.
 INTERRUPT

AUXILIARY CONTACTS
 CONFIGURATION
 VOLTAGE
 CURRENT RES
 IND
 LAMP

COIL DATA
 DUTY CYCLE
 OPERATING CHARACTERISTICS
 CLOSE VOLTAGE
 TIME
 RESISTANCE
 CURRENT
 TRIP VOLTAGE
 TIME
 RESISTANCE
 CURRENT
 ENVIRONMENTAL

OPERATING TEMP
 ALTITUDE
 SHOCK
 VIBRATION
 SINE

LIFE ELECTRICAL
 LIFE MECHANICAL
 WEIGHT MAX

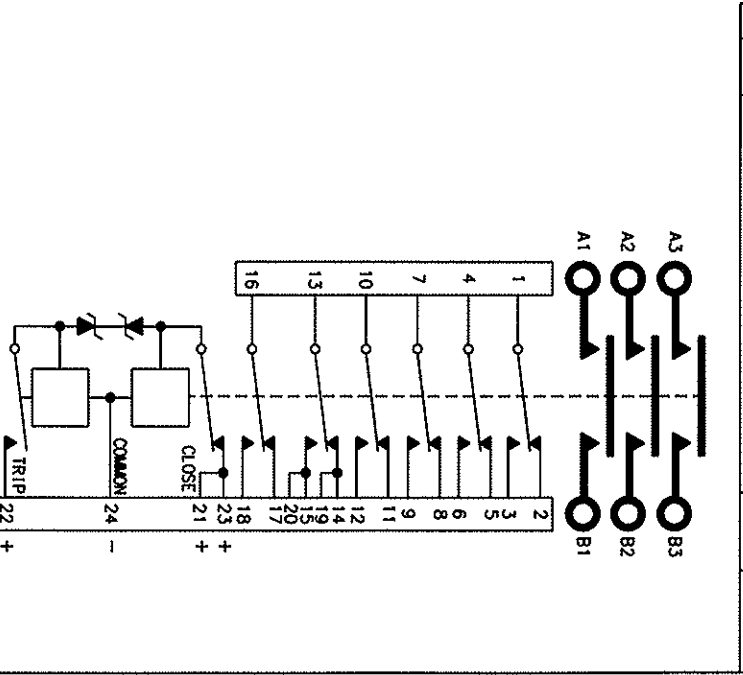
CONTINUOUS (SELF-DEENERGIZING)
 3PST (DOUBLE BREAK) MAGNETIC LATCHING
 115/200 VOLTS FREQ. 400 HZ
 175 AMP CONTINUOUS
 250 AMP 5 MIN
 375 AMP 15 SEC
 3,000 AMPS

6 PDT
 28 VDC, 115 VAC, 400 HZ
 7.5 AMP
 5 AMP
 5 AMP

OPERATING CHARACTERISTICS
 15 TO 30 VDC
 20 MS MAX AT 15 VDC
 4.4 ±10% OHMS
 6 AMPS MAX
 15 TO 30 VDC
 15 MS AT 15 VDC
 5.0 ±10% OHMS
 5 AMPS MAX

ENVIRONMENTAL
 -55°C TO +71°C MAX
 50,000 FT MAX
 15 G-S HALF SINE FOR 11 MS
 12 DA 5-28 HZ
 5 G-S 28-1000 HZ
 50,000 CYCLES MIN.
 100,000 CYCLES MIN.
 2 LBS 7 OZ

OPERATING TEMP
 ALTITUDE
 SHOCK
 VIBRATION
 SINE



PART OR IDENTIFYING NO	QUANTITY	DESCRIPTION	INDUSTRY OR SPECIFICATION	FORM NO	DRAWING OR SPECIFICATION	MATERIAL OR NOTE
1	1	OVERLAY - FAA/PMA				
13	1	OVERLAY - NAMEPLATE				
12	1	OVERLAY - WIRING DIAGRAM				
11	1	PLATE - FAA/PMA				
10	1	CONNECTOR, BACC 45 FN-16-24P				
9	6	WASHER LOCK, 1/4 SPLIT				
8	4	WASHER LOCK - NO. 4 INT				AN935B416
7	6	WASHER, 1/2 X 17/64 X .032 FLAT				AN935A4B
6	4	51204-251				BRONZE
5	6	50407-074				BRASS
4	1	39319-010				STEEL
3	1	39514-001				BRASS
2	1	16043-001				
1	2	30280-001				

UNLESS OTHERWISE SPECIFIED DIMENSIONS ARE IN INCHES (TOLERANCES ON)
2 PL DEC .13 PL DEC ANGLES
* .06 .010 * 1*

DR BY	RS	00/05/03
CHK BY	RS	00/05/03
ENGR	RS	00/05/03
MFG	RS	00/05/03
RELEASE		
CONTR NO.		
GOVT APPVAL		

HARTMAN ELECTRICAL MANUFACTURING MAANSFIELD, OHIO	
CONTRACTOR - 3PST MAGN. LATCH	175 AMP 115/200 V. 400 HZ.
SIZE	CODE IDENT DWG NO.
C	74063
SCALE NONE	B-451
	SHEET