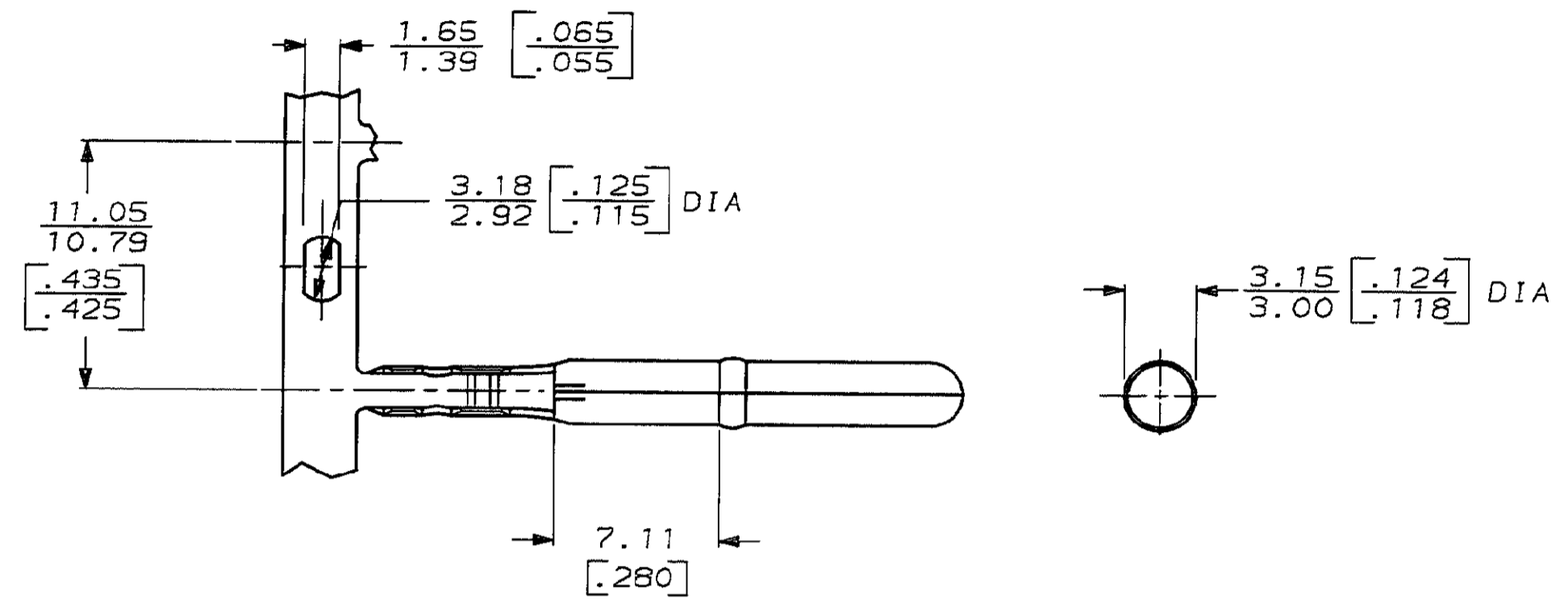
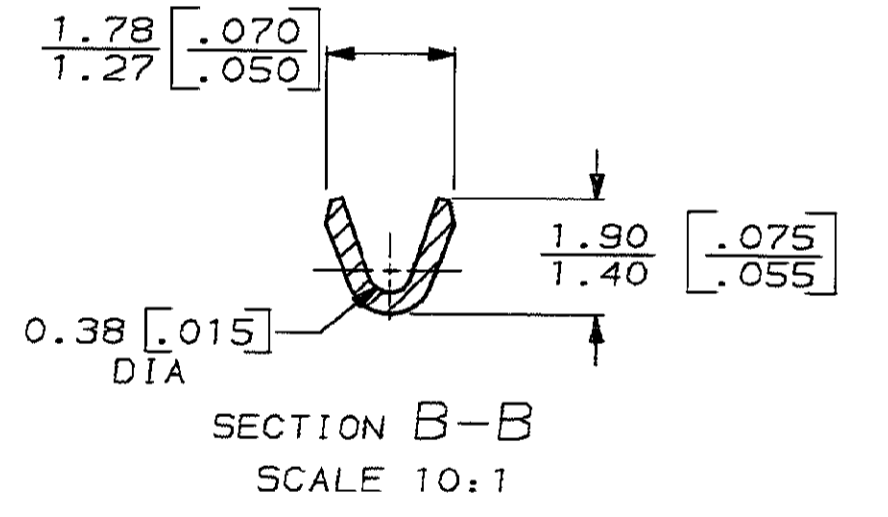
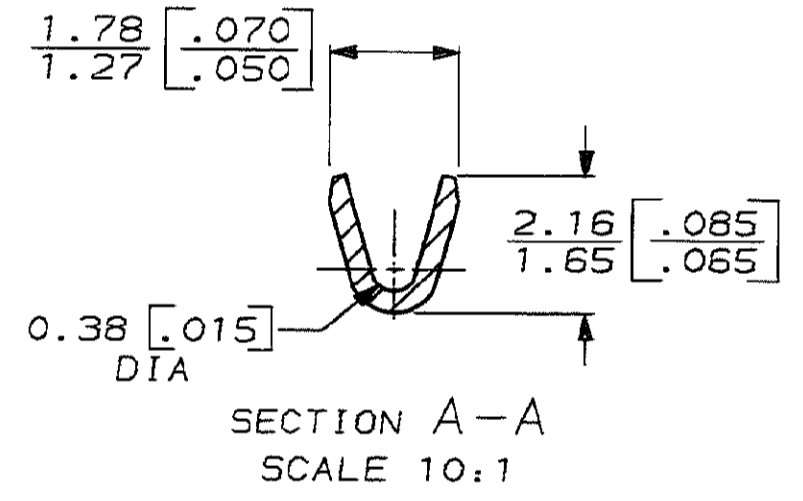
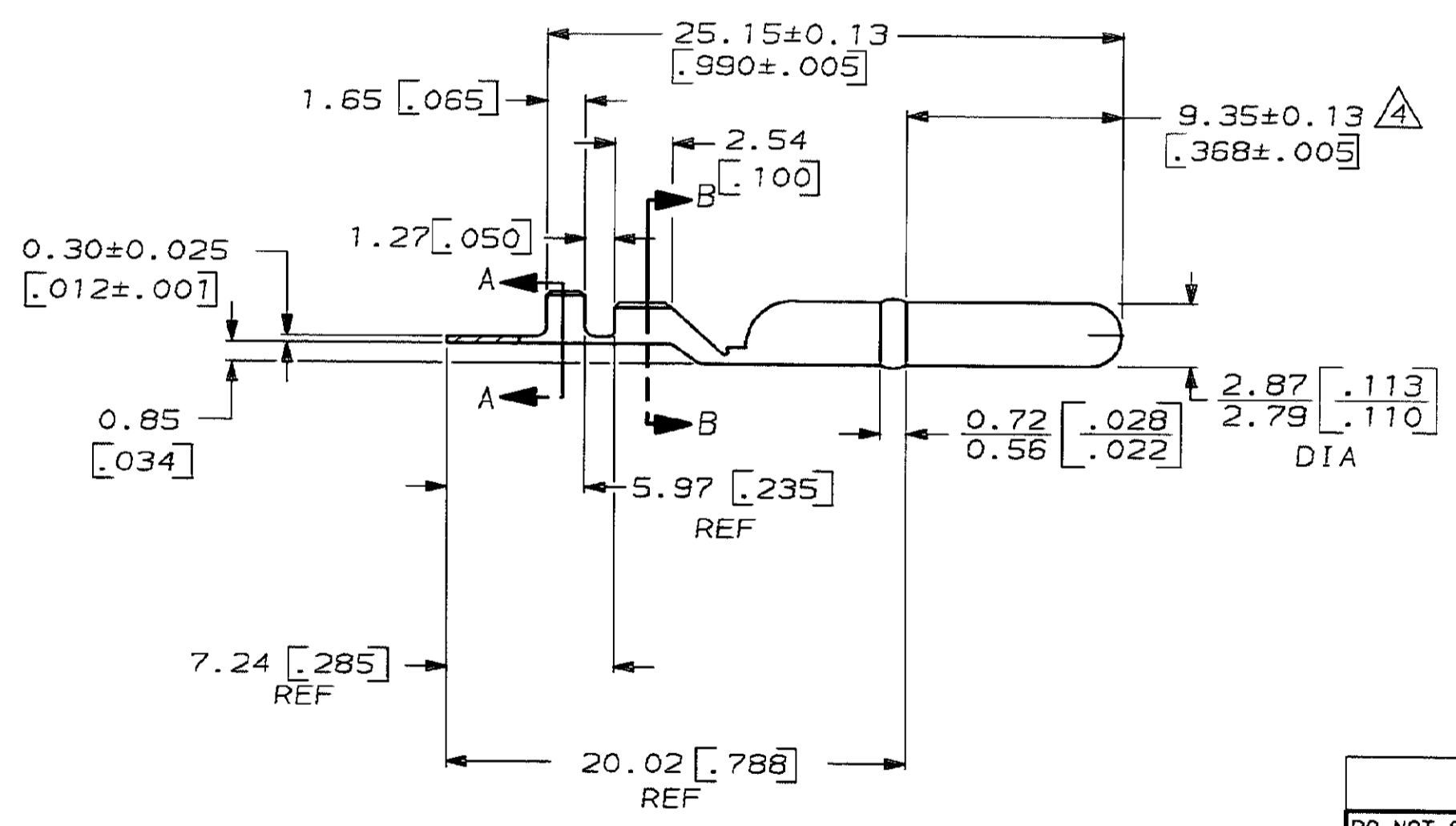


LOC	DIST	P	F	ZONE	LTR	REVISIONS	DATE	APPD
AF	50					DESCRIPTION		
					E	REV PER 0190-93	6/22/93	PF/GY



- 1 CONTINUOUS STRIP ON REELS
- 2 DIMENSIONS IN BRACKETS ARE IN INCHES
- 3 SEAM OPENING TO BE 0.076 [0.003] MAX OVER ENTIRE LENGTH OF PIN
- 4 2.79-2.87 [0.110-0.113] DIA APPLIES OVER THIS LENGTH
- 5 PARTS MUST MEET 90° BEND TOWARDS SEAM ON MATING PIN SIDE OF 0.72 [0.028] BEAD WITHOUT COMPLETELY BREAKING OFF



METRIC					
F	1.07 [0.042]	3.56 [0.140]	F	1.07 [0.042]	.81 [0.032]
					.72 [0.030]
					.74 [0.029]
					.051 [0.002]
TYPE	WIDTH	STRIP LENGTH ±.015	TYPE	WIDTH	WIRE HEIGHT
INSUL BARREL CRIMP			WIRE BARREL CRIMP		

1.15-0.63 [0.045-.025]		0.05-0.12mm <sup>2</sup> [30-26]		63493-1	
INSULATION RANGE		WIRE SIZE		PART NO	
DO NOT SCALE PRINT. UNLESS SPECIFIED DIMENSIONS IN INCHES TOLERANCES ON : 2 PLC DEC ± - 3 PLC DEC ± 0.25 [0.010] ANGLES ± -		DR 6/6/88 P FORTNEY CHK 6/9/88 MS FEHER APPD 6/9/88 D DECKER APPD 6/9/88 TL SHUTTER PRODUCT SPEC -		AMP   AMP INCORPORATED Harrisburg, Pa. 17105	
MATERIAL #2 HARD BRASS		FINISH PRE-TIN		NAME .112 DIA PIN	
APPLICATION SPEC -		SIZE C	FSCM NO 00779	DRAWING NO 63493	
WEIGHT -		SCALE 4:1	SHEET 1 OF 1		