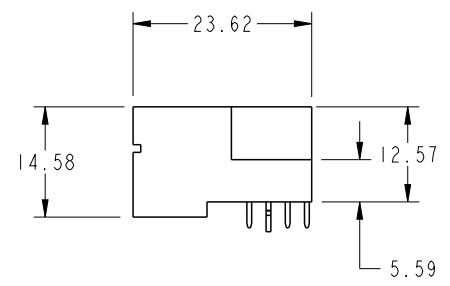
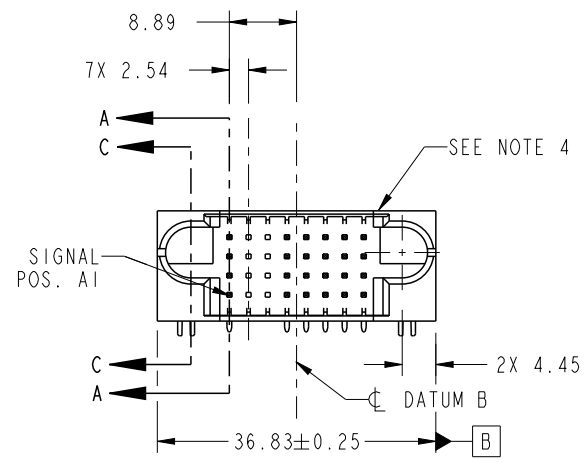


PRODUCT NO.	ROWS	SIGNAL									
		E1	1	2	3	4	5	6	7	8	E2
51939-590-- NOTE 3	D C B A	U	X	X	U	U	U	U	U	U	U
		T	X	X	T	T	T	T	T	T	T
		S	X	X	S	S	S	S	S	S	S
		R	X	X	R	R	R	R	R	R	R



CODE	DIM "M" MATING LENGTH	CONTACT TYPE
U	[6.86]	SIGNAL
T	[6.86]	SIGNAL
S	[6.86]	SIGNAL
R	[6.86]	SIGNAL
HA	[N/A]	HOLD-DOWN
X	OMITTED	OMITTED

spec ref		SEE NOTES		dr	Anson Liu	2011/04/02	projection 	MM ←→	size	A4	scale	1:1
tolerance std		TOLERANCES UNLESS OTHERWISE SPECIFIED		eng	Luo Weller	2012/08/07			ecn no	-		
SEE NOTES				chr	-	-						
surface		linear	0.X ±0.50	appr	Pei-Ming Zheng	2012/08/08	product family		PwrBlade	rel level	Released	
			0.XX ±0.25			title 32 S RIGHT ANGLE SOLDER HEADER		dwg no 51939-590		rev A		
			0.XXX ±0.10									
		angular	0° ±2°	www.fci.com		cat. no.	Product - Customer Drw			sheet 1 of 4		

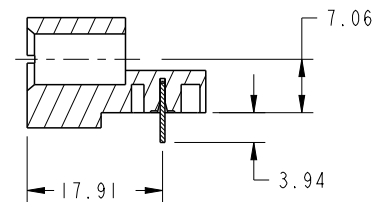
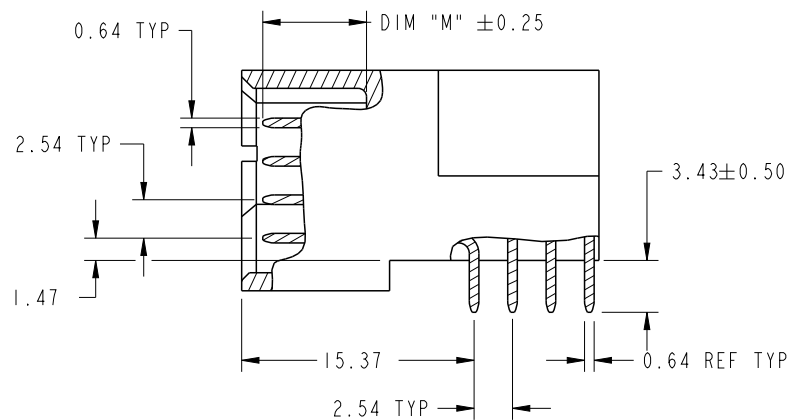
PwrE File - REV C - 2009-06-09



Copyright FCI.

PRODUCT NUMBER

51939-590__
NOTE: 3



SECTION C-C

BROKEN-OUT SECTION A-A
SCALE 2:1

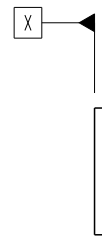
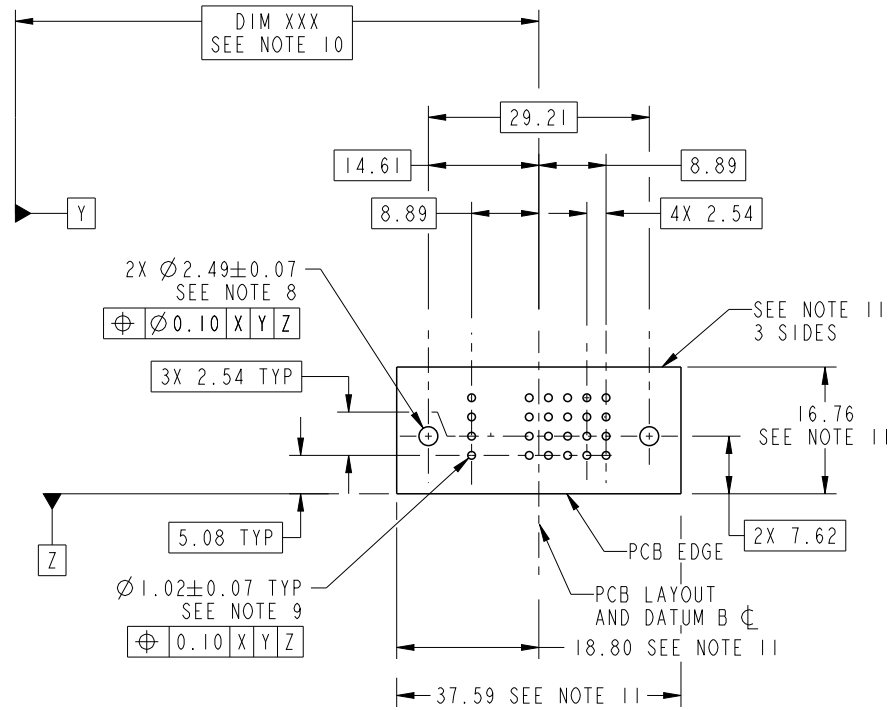


Copyright FCI.

spec ref	SEE NOTES			dr	Anson Liu	2011/04/02	projection 	MM ←→	size	A4	scale	1:1	
tolerance std	TOLERANCES UNLESS OTHERWISE SPECIFIED			eng	Luo Weller	2012/08/07			ecn no	-			
SEE NOTES				chr	-	-			rel level	Released			
surface	✓	linear	0.X	±0.50	FCI www.fci.com	title	32 S	dwg no	51939-590	rev	Product - Customer Drw		
			0.XX	±0.25							cat. no.	Product - Customer Drw	sheet 2 of 4
			0.XXX	±0.10									
		angular	0°	±2°									

PRODUCT NUMBER

51939-590__
NOTE: 3



RECOMMENDED PCB LAYOUT

spec ref	SEE NOTES			dr	Anson Liu	2011/04/02	projection	MM	size	A4	scale	1:1
tolerance std	TOLERANCES UNLESS OTHERWISE SPECIFIED			eng	Luo Weller	2012/08/07			ecn no	-		
SEE NOTES				chr	-	-		product family		PwrBlade		
surface	linear	0.X	±0.50	appr	Pei-Ming Zheng	2012/08/08	rel level	Released				
		0.XX	±0.25		title	32 S	dwg no	51939-590	rev	A		
		0.XXX	±0.10							www.fci.com	cat. no.	Product - Customer Drw
	angular	0°	±2°									

PRODUCT NUMBER

51939-590__
NOTE: 3

NOTES:

1. DIMENSIONS AND TOLERANCES ARE IN ACCORDANCE WITH ASME Y14.5M, 1994 UNLESS OTHERWISE SPECIFIED.

CONNECTOR NOTES:

- 2. HOUSING MATERIAL: UL 94 V-0 GLASS FILLED HIGH-TEMP THERMOPLASTIC
POWER CONTACT MATERIAL: COPPER ALLOY
SIGNAL PIN MATERIAL: COPPER ALLOY
- 3. SEE ITEM 1 & 2 IN PRINT 10064183 FOR PLATING SPEC OF 51939-590 AND 51939-590LF RESPECTIVELY.
- 4. MANUFACTURER'S NAME, DATE CODE AND OPTIONAL P/N TO APPEAR ON THIS SURFACE. THE MARK CAN BE OMITTED IF THERE IS NOT ENOUGH SPACE ON THIS SURFACE.
- 5. PRODUCT SPECIFICATION GS-12-149.
APPLICATION SPECIFICATION BUS-20-067.
- 6. PACKAGED IN TRAYS.

PCB NOTES:

- 7. ALL HOLE DIAMETERS ARE FINISHED HOLE SIZE.
- 8. MOUNTING HOLES, WHERE APPLICABLE, ARE UNPLATED.
- 9. $\varnothing 1.151 \pm 0.025$ DRILLED HOLES PLATED WITH
0.008 MIN SnPb OR Sn OVER 0.03
TO 0.08 Cu PLATING TO ACHIEVE
 $\varnothing 1.02 \pm 0.07$ HOLE.
- 10. "DIM XXX" TO BE DETERMINED BY THE CUSTOMER.
- 11. CONNECTOR KEEP-OUT ZONE.



Copyright FCI.

spec ref		SEE NOTES		dr	Anson Liu	2011/04/02	projection 	MM 	size	A4	scale	1:1	
tolerance std		TOLERANCES UNLESS OTHERWISE SPECIFIED		eng	Luo Weller	2012/08/07			ecn no	-			
SEE NOTES				chr	-	-							
surface <input checked="" type="checkbox"/>		linear	0.X ±0.50 0.XX ±0.25 0.XXX ±0.10	appr	Pei-Ming Zheng	2012/08/08	product family		PwrBlade	rel level	Released		
		angular	0° ±2°			title	32 S RIGHT ANGLE SOLDER HEADER		dwg no	51939-590		rev	A
				www.fci.com		cat. no.	Product - Customer Drw			sheet 4 of 4			