

4

3

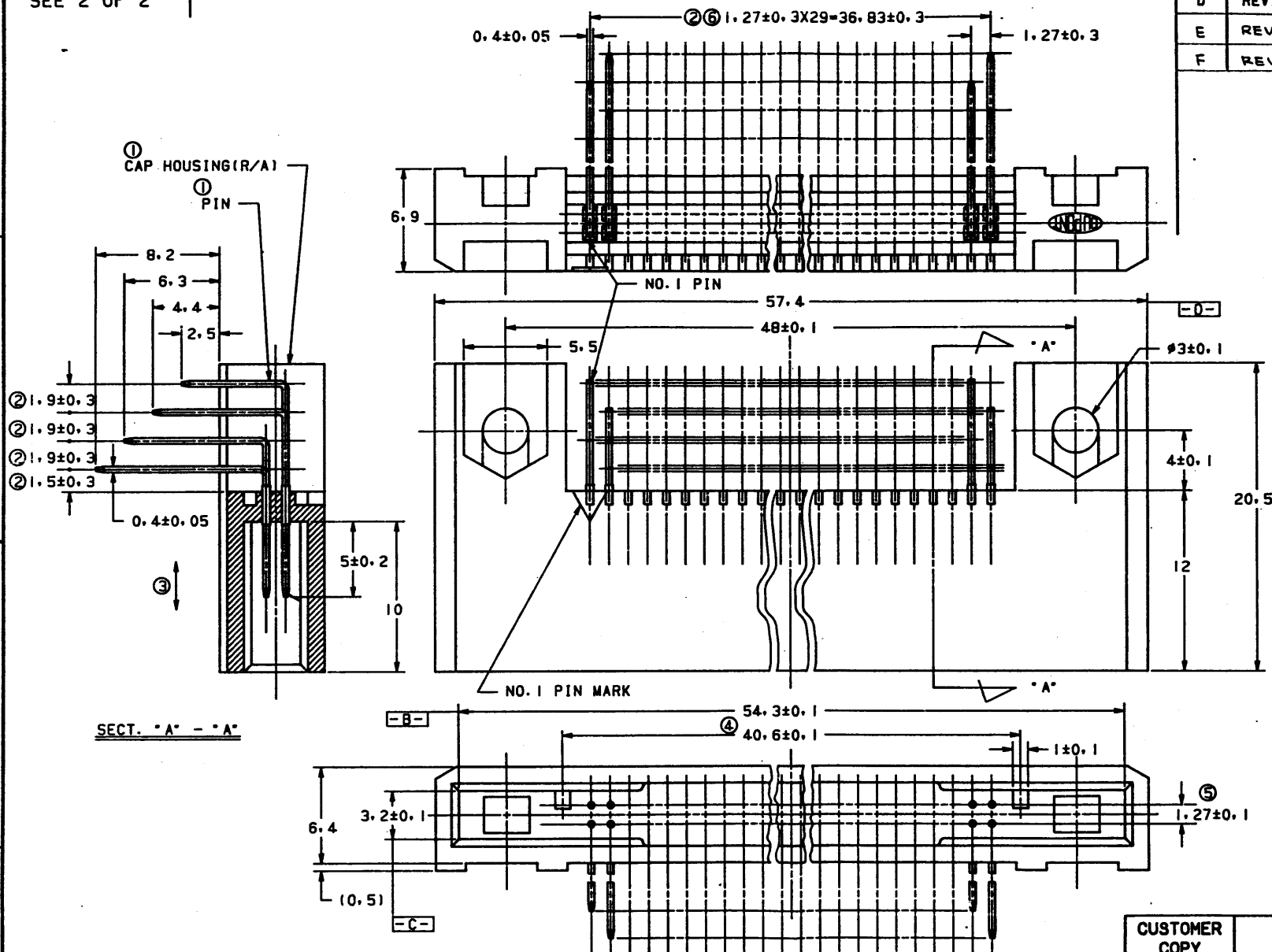
2

1

PRODUCT NO
SEE 2 OF 2

REVISIONS

REV	DESCRIPTION	BY	DATE
D	REVISED AND REDRAWN	VS	10/2/07
E	REVISED	VS	10/4/08
F	REVISED	VS	12/5/08



CUSTOMER COPY
CODE IDENT
22526

DuPont Electronics

SHEET INDEX	ISSUE SH NO	1																		
LEVELS		DO NOT SCALE DRAWING		TOLERANCE UNLESS OTHERWISE NOTED		MM/INCH ± 0.3		MATERIAL		DR		DATE		M. KITAMURA		09/21/87				
		THIRD ANGLE PROJECTION		LINEAR		0.0000-0.0517-0.0000-0.0020 0.0000-0.13-0.0000-0.005 0.0000-0.0517-0.0000-0.0020		SEE NOTE ①		CHK		10/2/07		H. Standaert						
TABULATION SHEETS REQUIRED		YES NO		ANGLES ± 2.0° ± 5°				FINISH		ENGR		10/2/07		H. Standaert						
								SEE NOTE ①		PDM: Rev:F		10/2/07		H. Standaert						

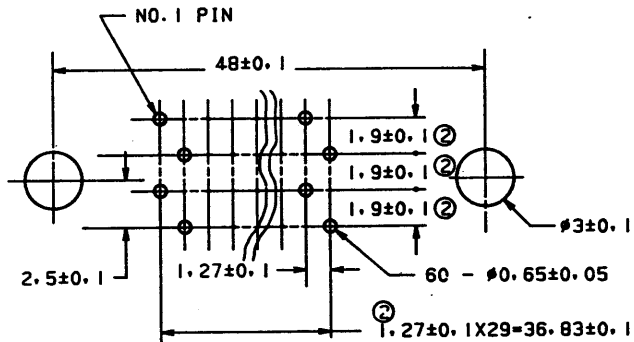
TITLE
IC CARD CONNECTOR 60 POS. CAP ASS'Y (R/A)

SCALE SIZE DWG NO
Released 69740

CAD CUST
SHEET 1 OF 2

PRODUCT NO	HOUSING COLOR	Au PLATING THK.
69740-001	WHITE	0.1μm MIN
69740-002	BLACK	0.1μm MIN
69740-101	WHITE	0.76μm MIN
69740-102	BLACK	0.76μm MIN

REVISIONS			
REV	DESCRIPTION	BY	DATE
	SEE 1 OF 2		



RECOMMENDED MOUNTING DIMENSION (TOP VIEW)

NOTES:

- ①. MATERIAL AND FINISH:
PIN
 MATERIAL - PHOS. BRO.
 FINISH - ALL OVER Ni UNDERPLATING 0.5μm THK MIN.
 CONTACT AREA - Au PLATING (THK. SEE TABLE),
 OVER Pd-Ni PLATING 0.5μm THK MIN.
SOLDER TAIL - SnPb(9/1) PLATING 3.8μm THK MIN.
CAP HOUSING (R/A1)
 MATERIAL - 66 NYLON GLASS 25% FILLED, UL94V-0.
- ②. TO BE NONCUMULATIVE TOLERANCE.
- ③. PIN RETENTION FORCE 0.5Kg/PIN MIN.
- ④. TO BE SYMMETRY WITHIN ±0.1 ABOUT DATUM B.
- ⑤. TO BE SYMMETRY WITHIN ±0.1 ABOUT DATUM C.
- ⑥. TO BE SYMMETRY WITHIN ±0.3 ABOUT DATUM D.

SHEET INDEX										ISSUE		SH NO		1		CUSTOMER COPY		CODE IDENT		22526		DuPont Electronics		DUPONT	
LEVELS				DO NOT SCALE DRAWING				TOLERANCE UNLESS OTHERWISE NOTED				MM/INCH ±0.3		MATERIAL		DR		DATE		TITLE					
								LINEAR				SEE NOTE ①		M. KITAMURA		09/21/87		IC CARD CONNECTOR 60 POS. CAP ASS'Y (R/A1)							
				THIRD ANGLE PROJECTION				ANGLES				SEE NOTE ①		CHK		10/2/87		SCALE SIZE DWG NO							
TABULATION SHEETS REQUIRED				YES		NO		MM				MM		ENGR		10/2/87		5-1 C		69740		CAD		CUST	
								±2° ±5°				APPD		10/5/87		5-1 C		69740		SHEET 2 OF 2					

PDM Rev 1 Released