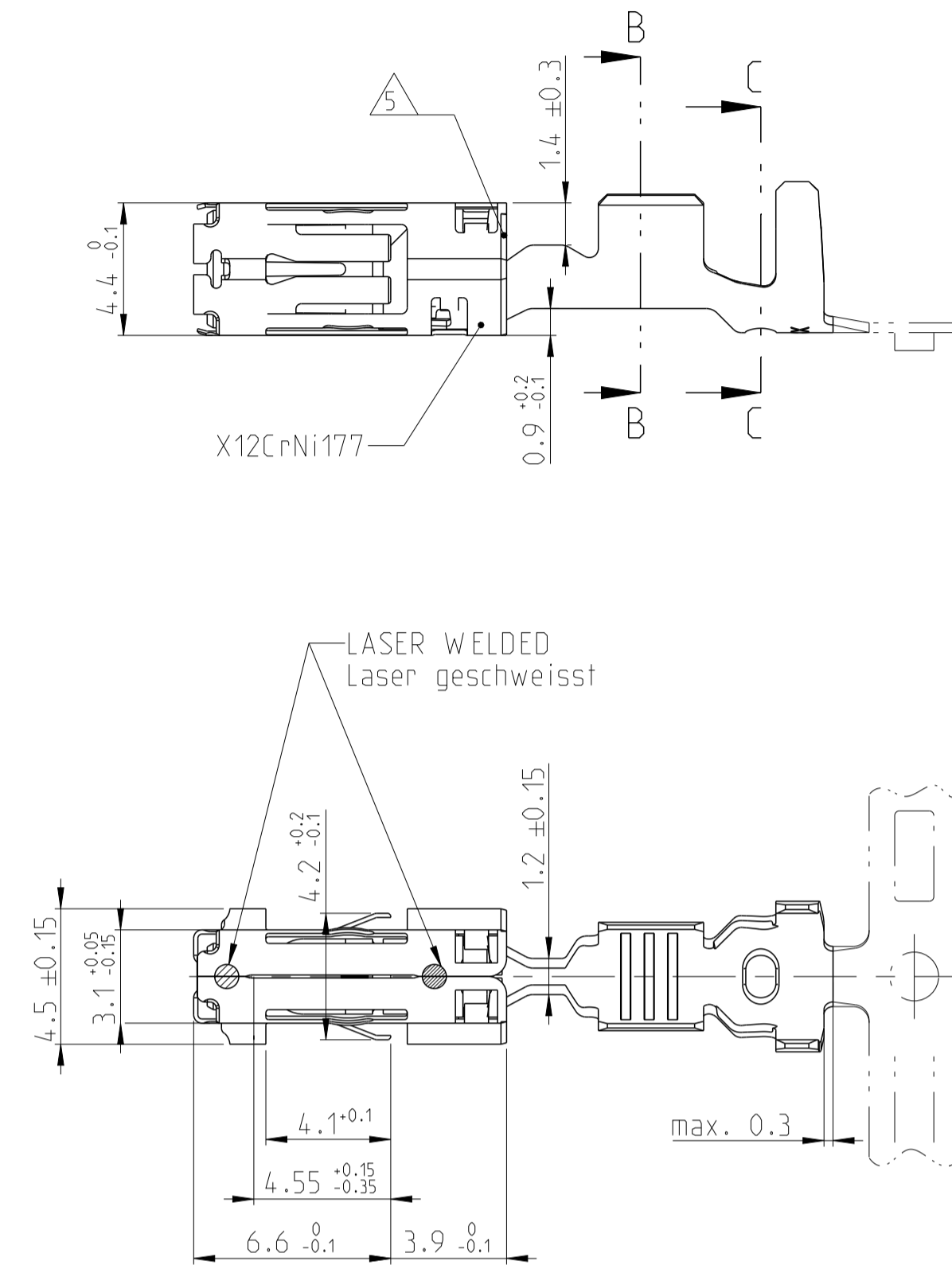
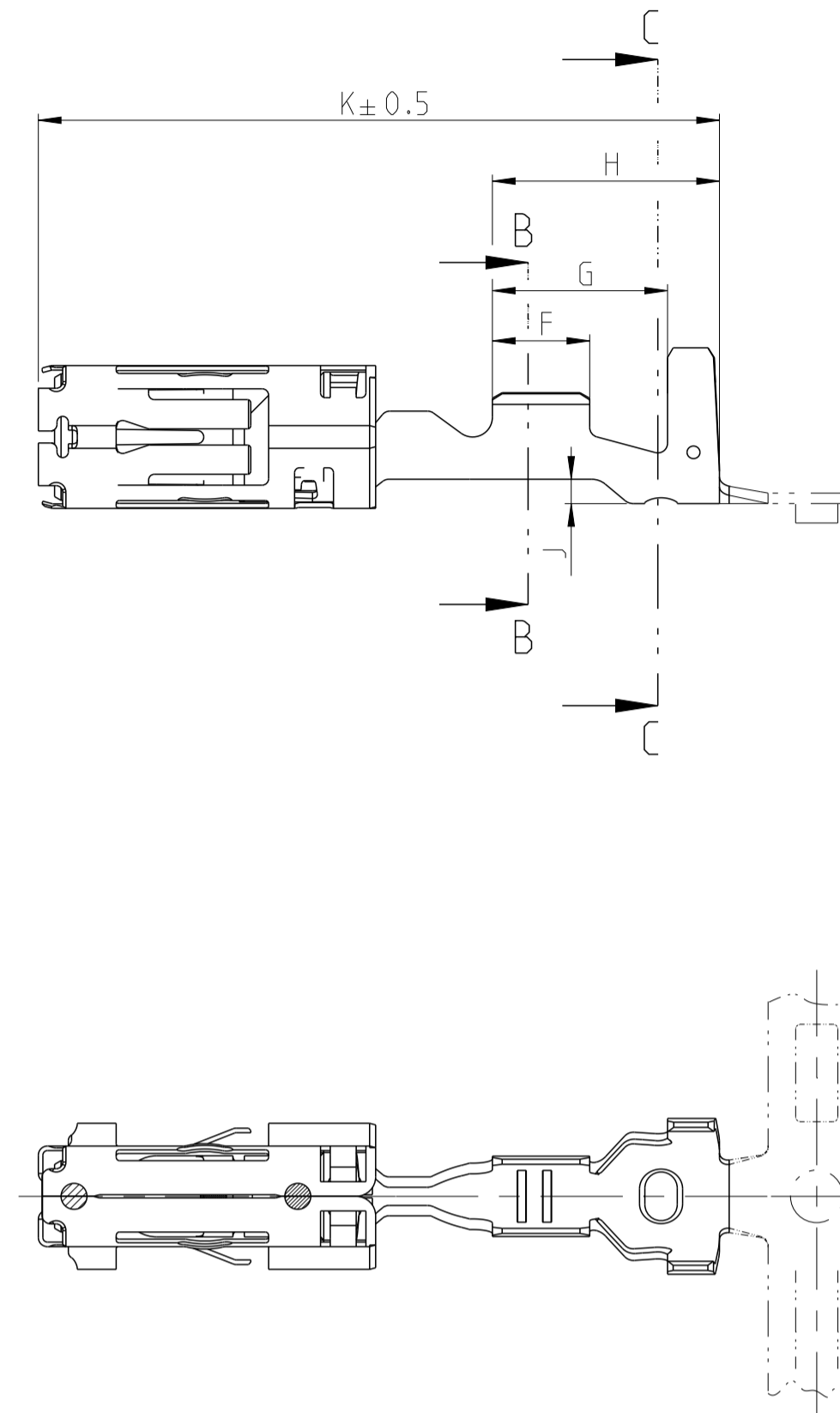


### PN 1703035-X

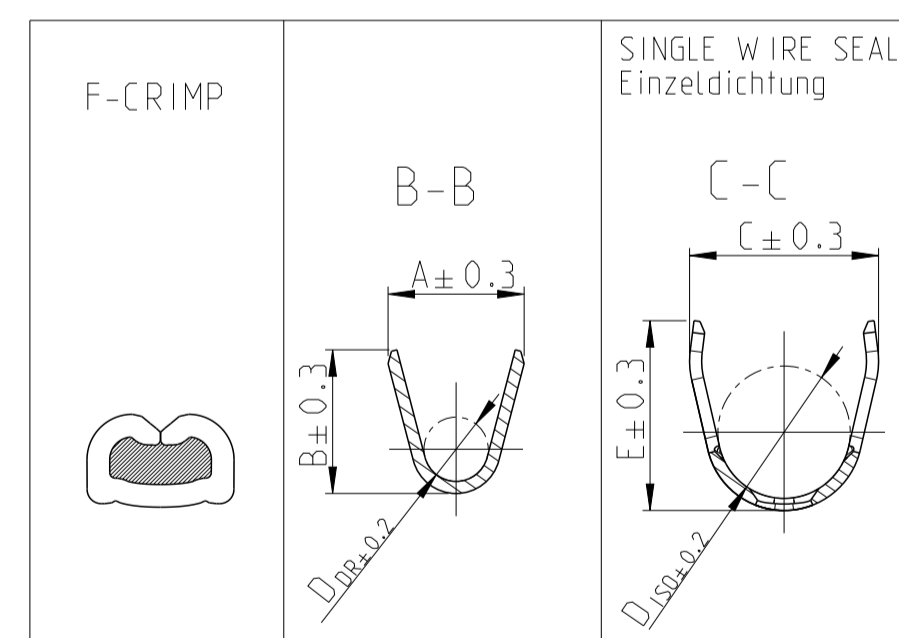


### PN 1703034-X



**NOTES**  
Bemerkungen

- 1 MATING PART SEE INTERFACE SPECIFICATION:  
Gegenstecker nach Ausfuehrungsvorschrift:  
114-18230-002; 2.8 <sup>+0.3</sup>/<sub>-0.1</sub> x 0.8 ± 0.03
- 2 ONLY FOR FLR-WIRE SEE DIN 72551, PART 6  
Nur fuer FLR-Leitung nach DIN 72551, PART 6
- 3 ONLY IN ZONE OF CONTACT  
Nur in Kontaktzone
- 4 -
- 5 OUTSIDE EDGE SWAGED  
Aussenkante angepraegt
- 6 CRIMPDATA SEE APPLICATION SPEC.  
Crimpdata sind der Verarbeitungsspezifikation zu entnehmen
- 7 DETAILS OF DESIGN ARE LEFT TO MANUFACTURER  
Einzelheiten der Ausfuehrung bleiben dem Hersteller ueberlassen
- 8 ONLY THE GERMAN-LANGUAGE VERSION SHALL BE BINDING  
Massgebend ist der deutsche Text
- 9 STRIP THICKNESS OF THE BODY 0.32 ± 0.01  
Kontaktkoerper Banddicke 0.32 ± 0.01
- 10 STRIP THICKNESS OF THE SPRING 0.14 ± 0.01  
Banddicke der Ueberfeder 0.14 ± 0.01



VERSION Ausfuehrung	TE ORDER NO. STRIP FORM	REV.	MATERIAL Werkstoff	SURFACE Oberflaeche	APPLICATION TOOL Anschlag- WKZ	HAND TOOL Handzange	WIRE SIZE RANGE Leiter- querschnitt mm <sup>2</sup>	PROCESSING PARAMETERS Verarbeitungs- parameter	CRIMP DIMENSIONS Crimpabmessungen mm											SINGLE WIRE SEAL Einzelichtung	DEAD END PLUG Blindstopfen		
									A	B	D <sub>DR</sub>	C	E	D <sub>ISO</sub>	F	G	H	J	K			TE NO.	TE NO.
	-	-	CuNiSi	GOLD PLATED vergoldet	TE NO. X-878974-X	Basis-HZ TE NO. 354940-1	2.5	6	3.6	3.8	1.7	5.0	5.0	3.5	3.5	5.9	7.5	0.8	21	828905-1	828922-1		
	1703035-2	A		PRE TIN PLATED verzinkt																		Matrize TE NO. 539704-1	1.5
	-	-	CuNiSi	GOLD PLATED vergoldet	TE NO. X-878973-X	Basis-HZ TE NO. 354940-1	1.0	3	2.5	2.7	1.2	4.8	4.8	3.3	3	5.4	7	0.75	21	828904-1	828922-1		
	1703035-1	A		PRE TIN PLATED verzinkt																		Matrize TE NO. 539703-1	0.75
	-	-		PRE TIN PLATED verzinkt																		Matrize TE NO. 539703-1	0.5

THIS DRAWING IS A CONTROLLED DOCUMENT.		OWN G. Abraham	01 JUL 2004		TE Connectivity	
DIMENSIONS: mm		CHK M. Pfeilschiffer	02 JUL 2004		NAME PRODUCT GROUP DRAWING Tabellenzeichnung 2.8mm SENSOR FLAT RECEPTACLE	
TOLERANCES UNLESS OTHERWISE SPECIFIED:		APVD M. Bleicher	05 JUL 2004	SIZE CAGE CODE DRAWING NO.		
0 PLC ±		PRODUCT SPEC		RESTRICTED TO		
1 PLC ±		APPLICATION SPEC		SCALE		
2 PLC ±		114-18144-1		SHEET 1 OF 1		
3 PLC ±		WEIGHT 0.625 g		REV A1		
4 PLC ±		CUSTOMER DRAWING				
ANGLES ±						
FINISH						