

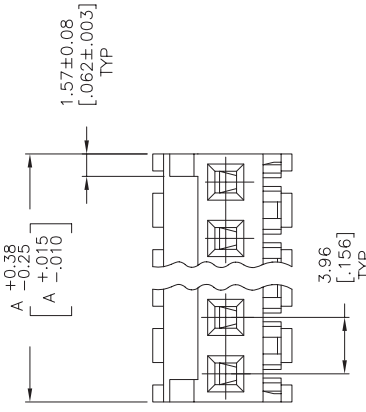
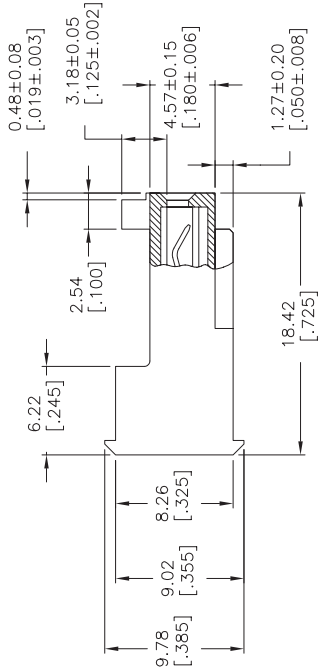
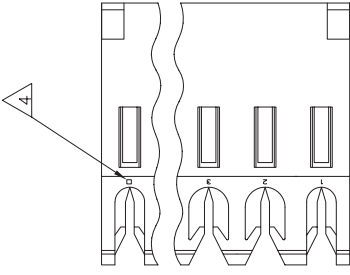
THIS DRAWING IS UNPUBLISHED.
 © COPYRIGHT BY TYCO ELECTRONICS CORPORATION. ALL RIGHTS RESERVED.

RELEASED FOR PUBLICATION
 BY TYCO ELECTRONICS CORPORATION.

LOC CM 54
 DIST 54
 P LTR D
 ECO-07-012863

REVISIONS
 DESCRIPTION DATE
 UN APD
 KW DB

13 JUN 07

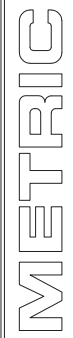


55.47	[2.184]	14	4-644472-4
51.51	[2.028]	13	4-644472-3
47.55	[1.872]	12	4-644472-2
43.59	[1.716]	11	4-644472-1
39.62	[1.560]	10	4-644472-0
35.66	[1.404]	9	3-644472-9
31.70	[1.248]	8	3-644472-8
27.74	[1.092]	7	3-644472-7
23.77	[.936]	6	3-644472-6
19.81	[.780]	5	3-644472-5
15.85	[.624]	4	3-644472-4
11.89	[.468]	3	3-644472-3
7.92	[.312]	2	3-644472-2
55.47	[2.184]	14	1-644472-4
51.51	[2.028]	13	1-644472-3
47.55	[1.872]	12	1-644472-2
43.59	[1.716]	11	1-644472-1
39.62	[1.560]	10	1-644472-0
35.66	[1.404]	9	644472-9
31.70	[1.248]	8	644472-8
27.74	[1.092]	7	644472-7
23.77	[.936]	6	644472-6
19.81	[.780]	5	644472-5
15.85	[.624]	4	644472-4
11.89	[.468]	3	644472-3
7.92	[.312]	2	644472-2

DIM A NO OF CIRCUITS PART NO

THIS DRAWING IS A CONTROLLED DOCUMENT.		REV B	12 FEB 91
DESIGNED BY	CHK SWING	12 FEB 91	
DRAWN BY	D.R. CLARK	20 FEB 91	
PRODUCT SPEC	108-1051		
APPLICATION SPEC	114-1020		
WEIGHT			
SIZE	A2	00779	644472
CAGE CODE			
RESTRICTED TO			

TYCO ELECTRONICS CORPORATION HARRISBURG, PA 17105-3608	MTA-156 CONNECTOR ASSEMBLY, 24 AWG, STANDARD
SCALE 4:1	SHEET 1 OF 1



- MATERIAL: CONNECTOR - NYLON UL94V-2 (WHITE).
 CONTACTS - 0.30[.012] THICK COPPER ALLOY
 BRIGHT TIN-LEAD 0.00203[.000080] MIN THICK FOR CONTACTS
 644472-2 THRU 1-644472-4
 MATTE WHISKER MITIGATED TIN 0.00203[.000080] MIN THICKNESS
 OVER NICKEL UNDERPLATE FOR 3-644472-2 THRU 4-644472-4
- CONTACTS ACCEPT 24 AWG WIRE WITH 2.41[.095] MAX INSULATION DIAMETER.
- CONTACTS MUST ACCEPT 1.14±0.03 [.045±.001] SQUARE POST AND REMAIN LOCKED IN POSITION.
- IDENTIFICATION NUMBER FOR LAST CIRCUIT MAY NOT APPEAR ON ALL ASSEMBLIES.
- DIMENSIONS IN BRACKETS ARE IN INCHES.
- HOUSING FEATURES ARE: FEED-THRU WITHOUT LOCKING RAMP AND WITH POLARIZING TAB.