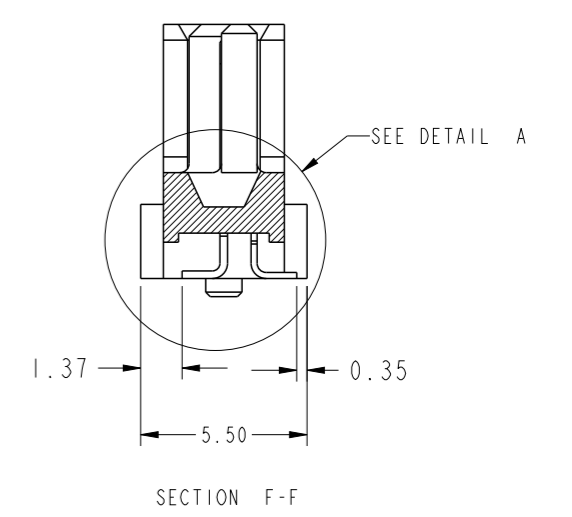
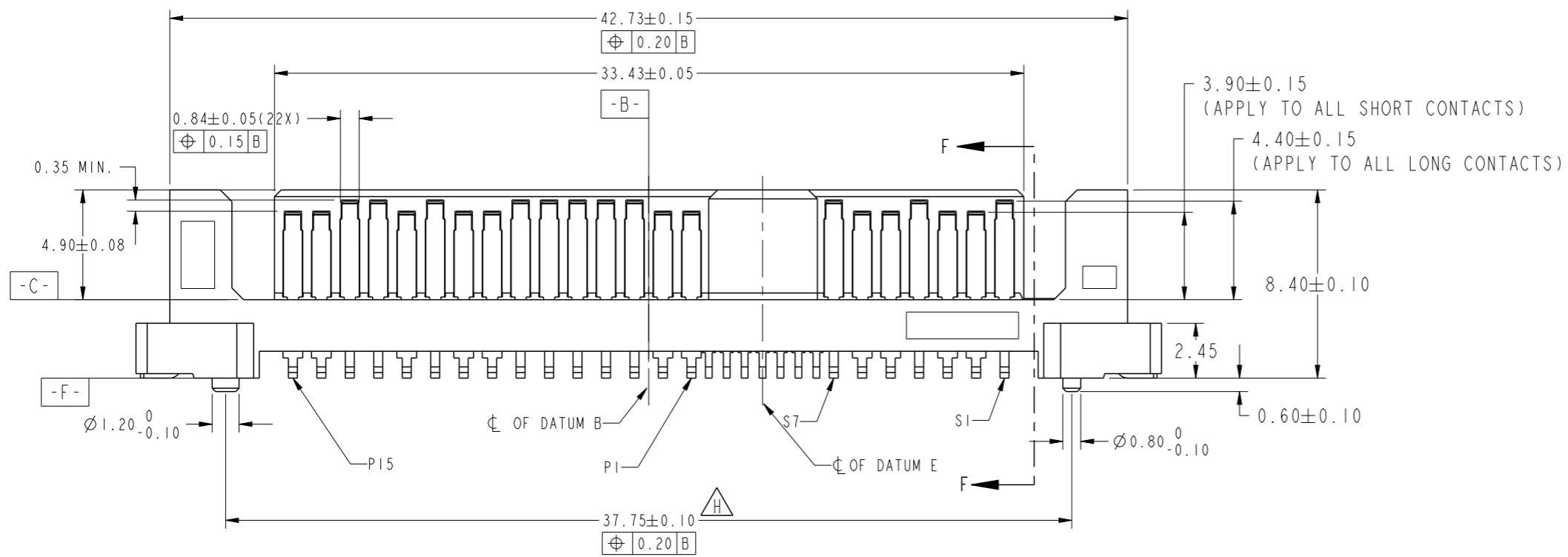
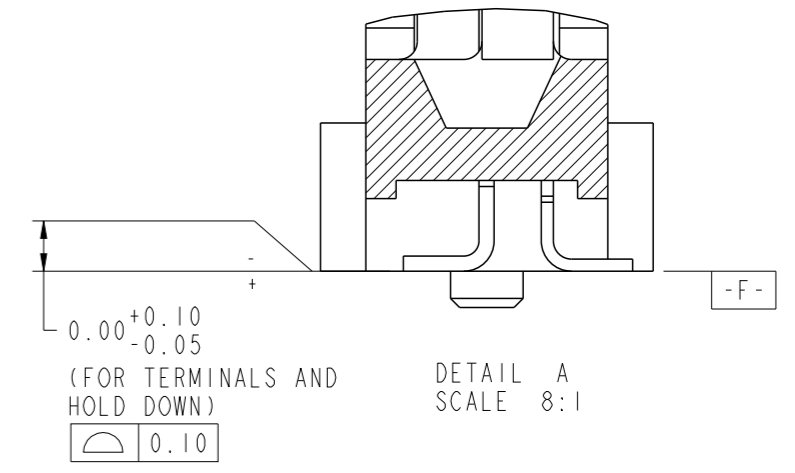
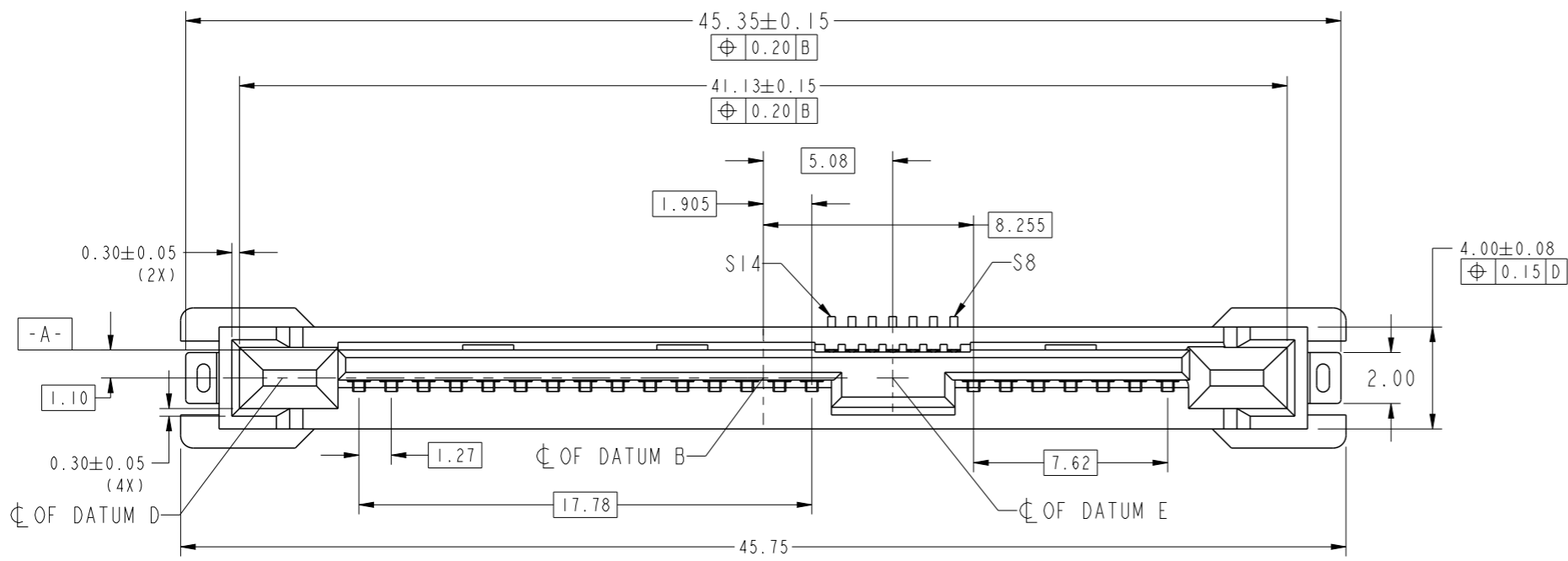


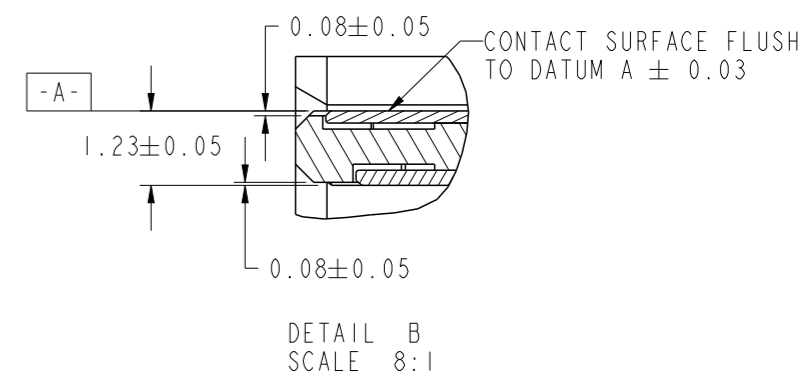
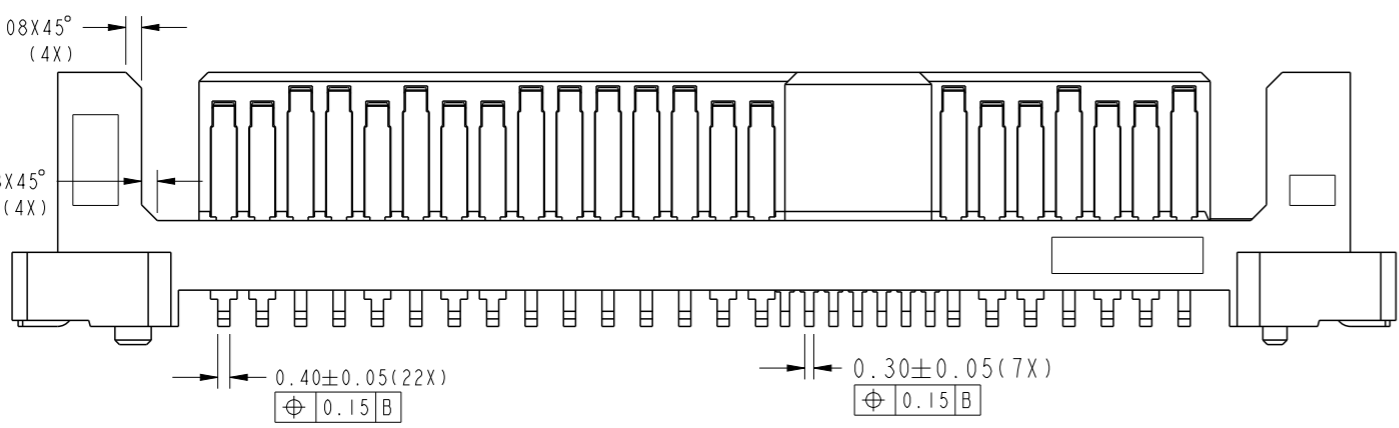
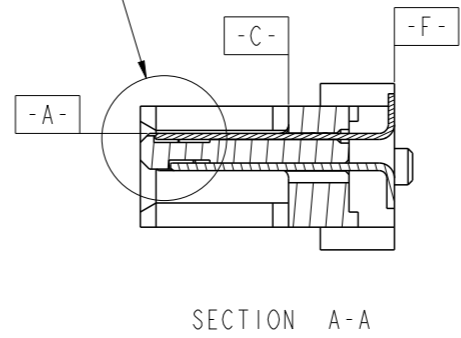
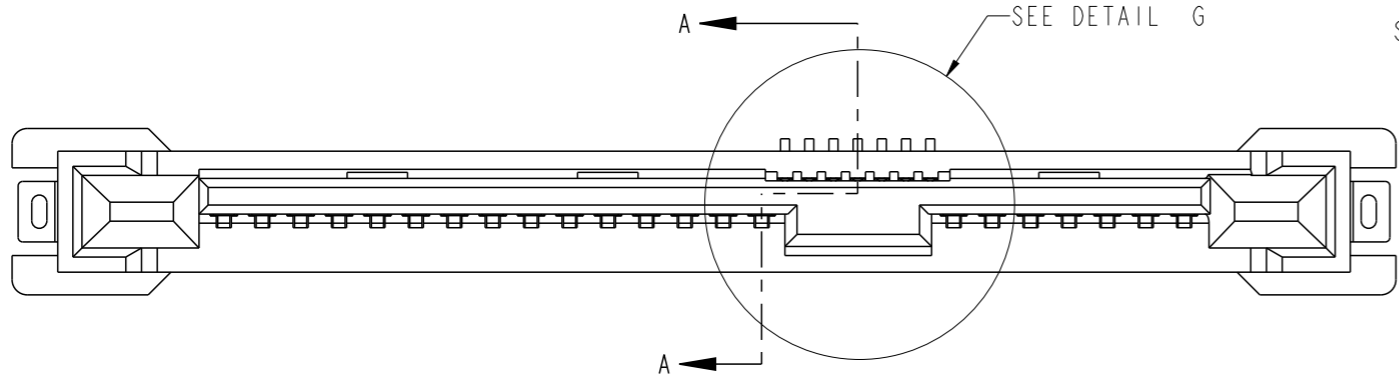
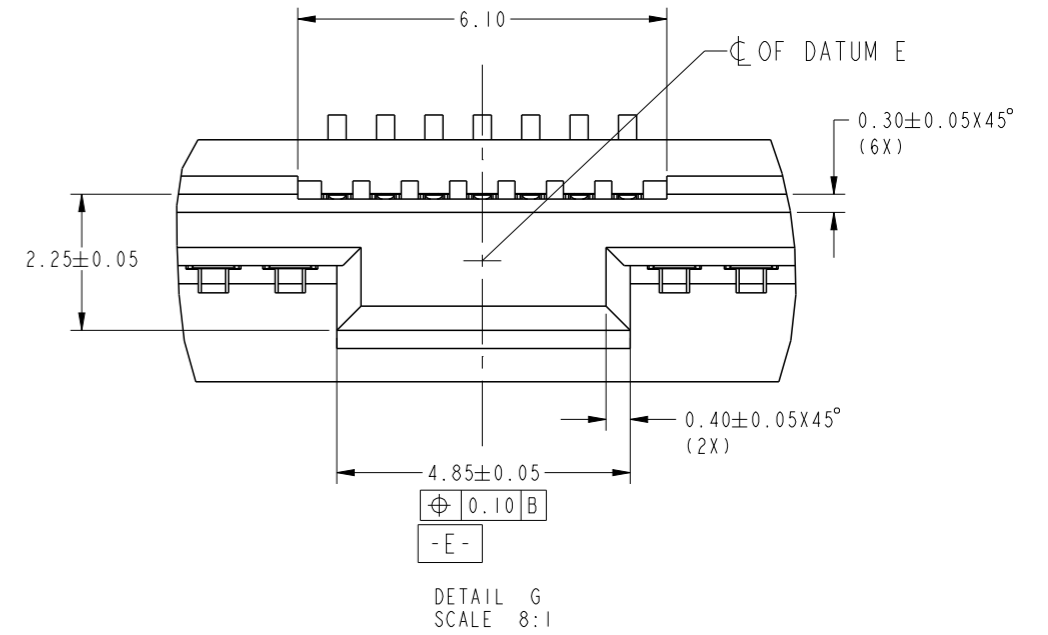
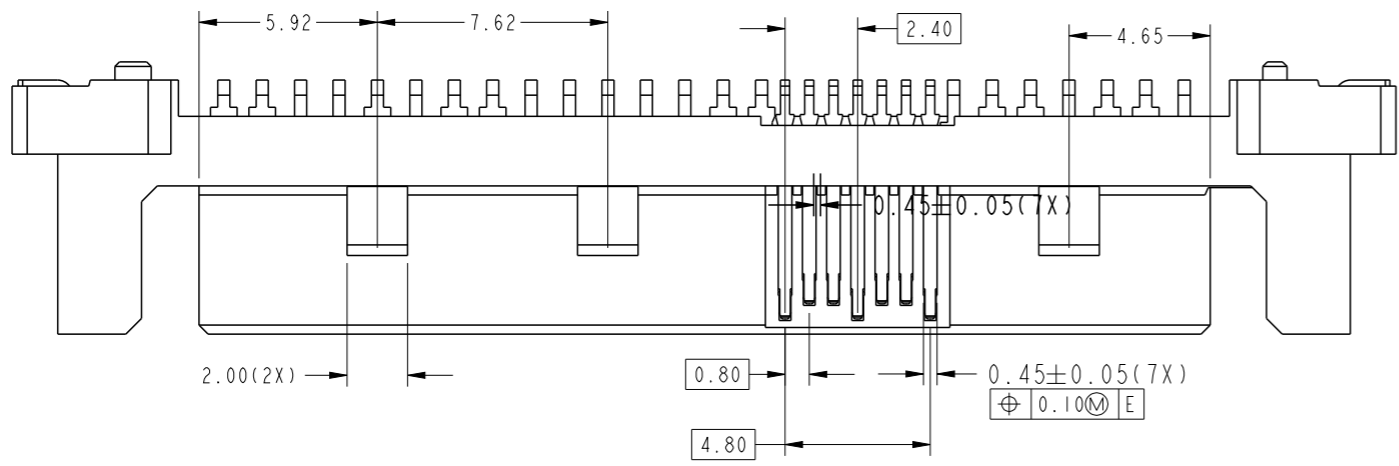
PRODUCT NO.
 10031193-001LF
 10031193-002LF
 10031193-003C-TRLF



Amphenol FCI
 © 2016 AFCI

| | | | | | | | | | |
|--|----------------------|-------------|------------|--|----------|------------------------|---------------|-----------|----------|
| spec ref | dr | wcadmin | 2005/01/27 | projection | MM | size | A3 | scale | 4:1 |
| tolerance std | eng | Jeffrey Lim | 2016/09/08 | | | ecn no | ELX-S-24900-1 | rel level | Released |
| ASME Y14.5 | chr | - | - | | | | | | |
| TOLERANCES UNLESS OTHERWISE SPECIFIED surface | linear ASME Y14.5 | 0.X | ±0.25 | Amphenol FCI SAS PLUG VERTICAL SMT ASSY | cat. no. | Product - Customer Drw | sheet 1 of 3 | rev H | |
| | | 0.XX | ±0.13 | | | | | | |
| | | 0.XXX | ±0.050 | | | | | | |
| | | angular | 0° | ±2° | | | | | |

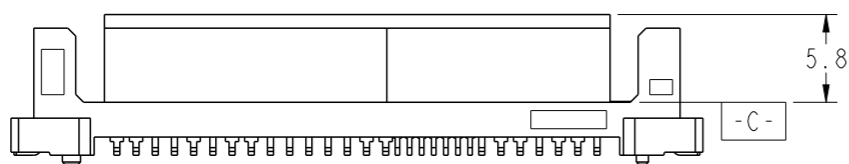
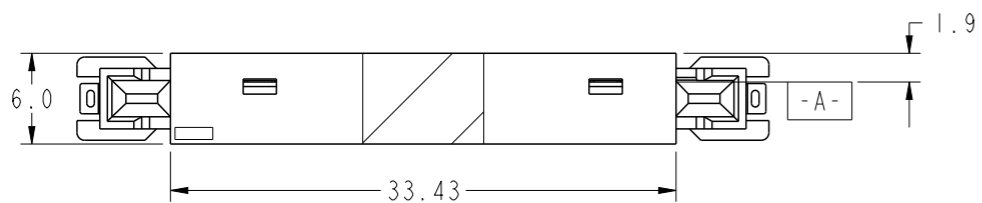
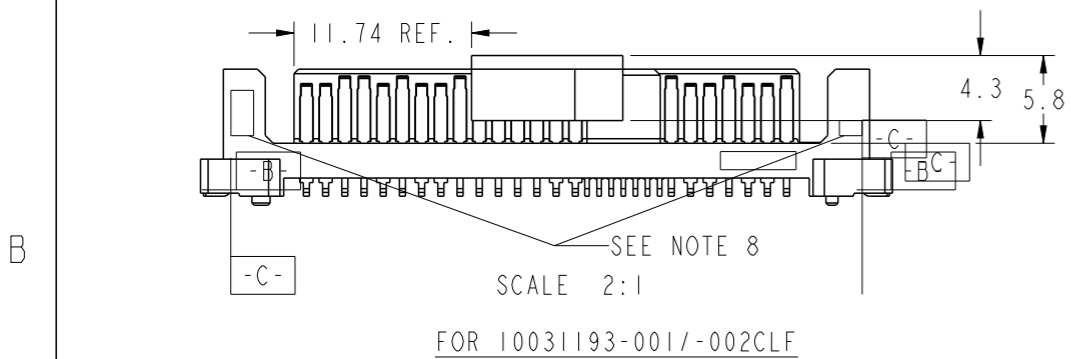
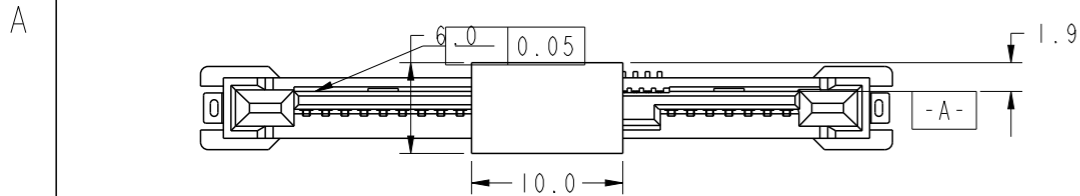
PRODUCT NO.
SEE TABLE



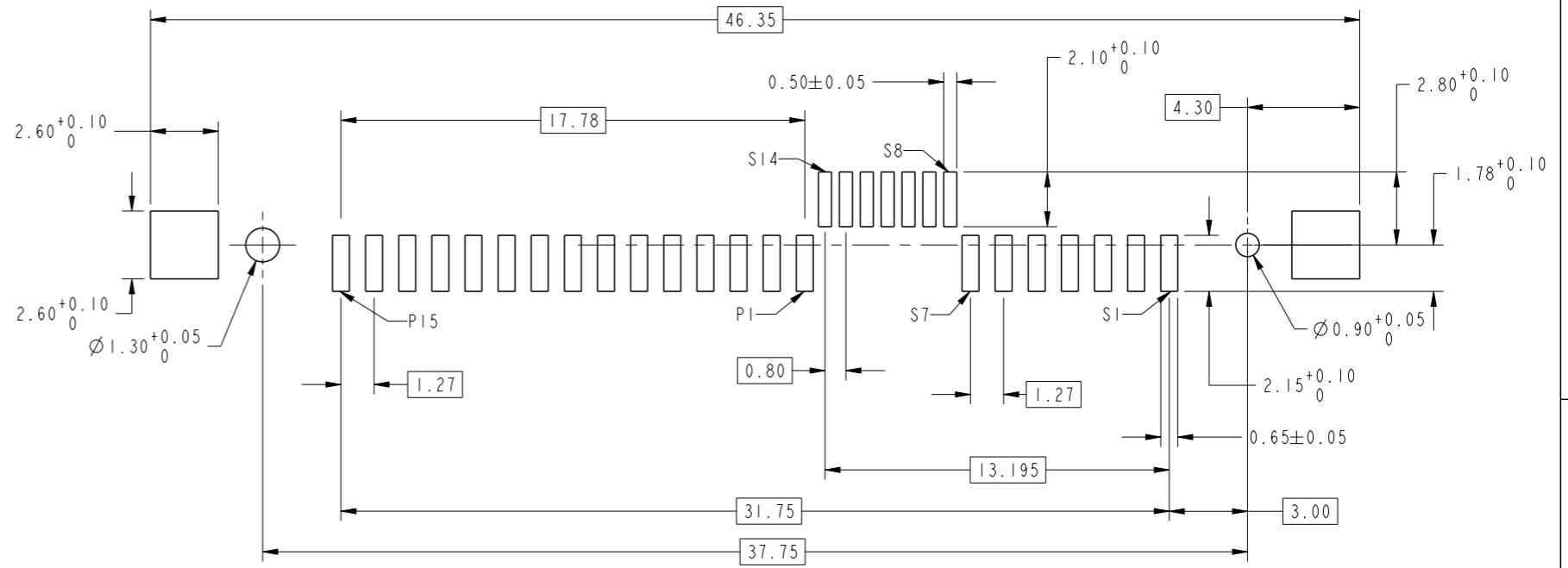
Amphenol FCI
© 2016 AFCI

| | | | | | | | | | | | | | |
|---------------|---------------------------------------|------|-------|--------------|-------------------------------|------------|------------|--------------|----------|-----------|---------------|-------|-----|
| spec ref | | | | dr | wcadmin | 2005/01/27 | projection | | | size | A3 | scale | 4:1 |
| tolerance std | TOLERANCES UNLESS OTHERWISE SPECIFIED | | | eng | Jeffrey Lim | 2016/09/08 | | MM | ←→ | ecn no | ELX-S-24900-1 | | |
| ASME Y14.5 | | | | chr | - | 2016/10/06 | | | | rel level | Released | | |
| surface | linear | 0.X | ±0.25 | Amphenol FCI | SAS PLUG VERTICAL SMT ASSY | | | dwg no | 10031193 | | rev | H | |
| | | 0.XX | ±0.13 | | | | | | | | | | |
| 0.XXX | ±0.050 | | | | | | | | | | | | |
| ASME Y14.5 | angular | 0° | ±2° | cat. no. | Product - Customer Drw | | | sheet 2 of 3 | | | | | |

| PRODUCT NO. | WITH PICK-UP CAP | PACKAGING | PLATING SPEC. |
|-------------------------------|------------------|-------------|-------------------------|
| 10031193-001LF/-002LF | NO | TRAY | -001LF REFER TO NOTE 2A |
| 10031193-001CLF/-002CLF | YES | | -002LF REFER TO NOTE 2B |
| 10031193-001C-TRLF/-002C-TRLF | YES | TAPE & REEL | NOTE 2A |
| 10031193-003C-TRLF | | | |



SCALE 2:1
FOR 10031193-003C-TRLF Δ



RECOMMENDED SOLDER PAD LAYOUT

NOTES:-

- MATERIAL:
HOUSING & PICK-UP CAP: HIGH TEMPERATURE PLASTIC, BLACK, UL94V-0
CONTACT & HOLD DOWN: COPPER ALLOY
- FINISH:
CONTACT: 1.27um MIN. NICKEL UNDERPLATE OVERALL,
1.91um MIN. 100% MATTE TIN ON SOLDER TAIL,
A) 0.76um MIN. GOLD ON CONTACT AREA
B) 0.76um MIN. GXT™ ON CONTACT AREA
HOLD DOWN: 2.54um MIN. 100% MATTE TIN OVER 1.27um MIN. NICKEL UNDERPLATE
- THIS PRODUCT MEETS EUROPEAN UNION DIRECTIVES AND OTHER COUNTRY REGULATIONS AS DESCRIBED IN GS-47-0004
- THE HOUSING WILL WITHSTAND EXPOSURE TO 260°C PEAK TEMPERATURE FOR 10 SECONDS IN A CONVECTION, INFRA-RED OR VAPOR PHASE REFLOW OVEN
- PART WITH PICK-UP CAP, P/N XXXXXXXX-XXXCLF
- FOR TAPE & REEL PACKAGING, P/N XXXXXXXX-XXXC-TRLF
- ASSY DIMENSIONS WITH REFERENCE TO SFF-8482
- THE PART SHALL HAVE "FCI" ID AND CAVITY NUMBER SHOWN IN THE APPROXIMATE LOCATION
- PRODUCT SPECIFICATION: GS-12-282
- PACKAGING SPECIFICATION: GS-14-952(TRAY); GS-14-1038(TAPE & REEL)
- A SYMBOL Δ WILL BE NEXT TO ANY DIMENSION, VIEW OR NOTE WHICH HAS BEEN MODIFIED WITH THE CURRENT DRAWING REVISION

| | | | | | | | | | |
|---------------|---------|--------------|------------|--|----------|------------------------|---------------|--------------------|----------|
| spec ref | dr | wcadmin | 2005/01/27 | projection | MM | size | A3 | scale | 4:1 |
| tolerance std | eng | Jeffrey Lim | 2016/09/08 | | | ecn no | ELX-S-24900-1 | | |
| ASME Y14.5 | chr | - | - | | | rel level | Released | | |
| surface | appr | Koon-Poh Tay | 2016/10/06 | product family | | rel level | Released | | |
| ASME Y14.5 | linear | 0.X | ±0.25 | Amphenol FCI SAS PLUG VERTICAL SMT ASSY | cat. no. | Product - Customer Drw | sheet 3 of 3 | dwg no 10031193 | rev H |
| | | 0.XX | ±0.13 | | | | | | |
| 0.XXX | ±0.050 | | | | | | | | |
| ASME Y14.5 | angular | 0° | ±2° | | | | | | |