

PART NUMBER	REV	FIRST USED	TERMINATOR	FEED TYPE	DESCRIPTION
1529005-1	D		BENCH & LEADMAKER	MECH POST FEED	HD-I APPLICATOR
7-1529005-1	D		BENCH & LEADMAKER	MECH POST FEED	-1 AND SPARE PARTS
7-1529005-7	A				SPARE PARTS KIT

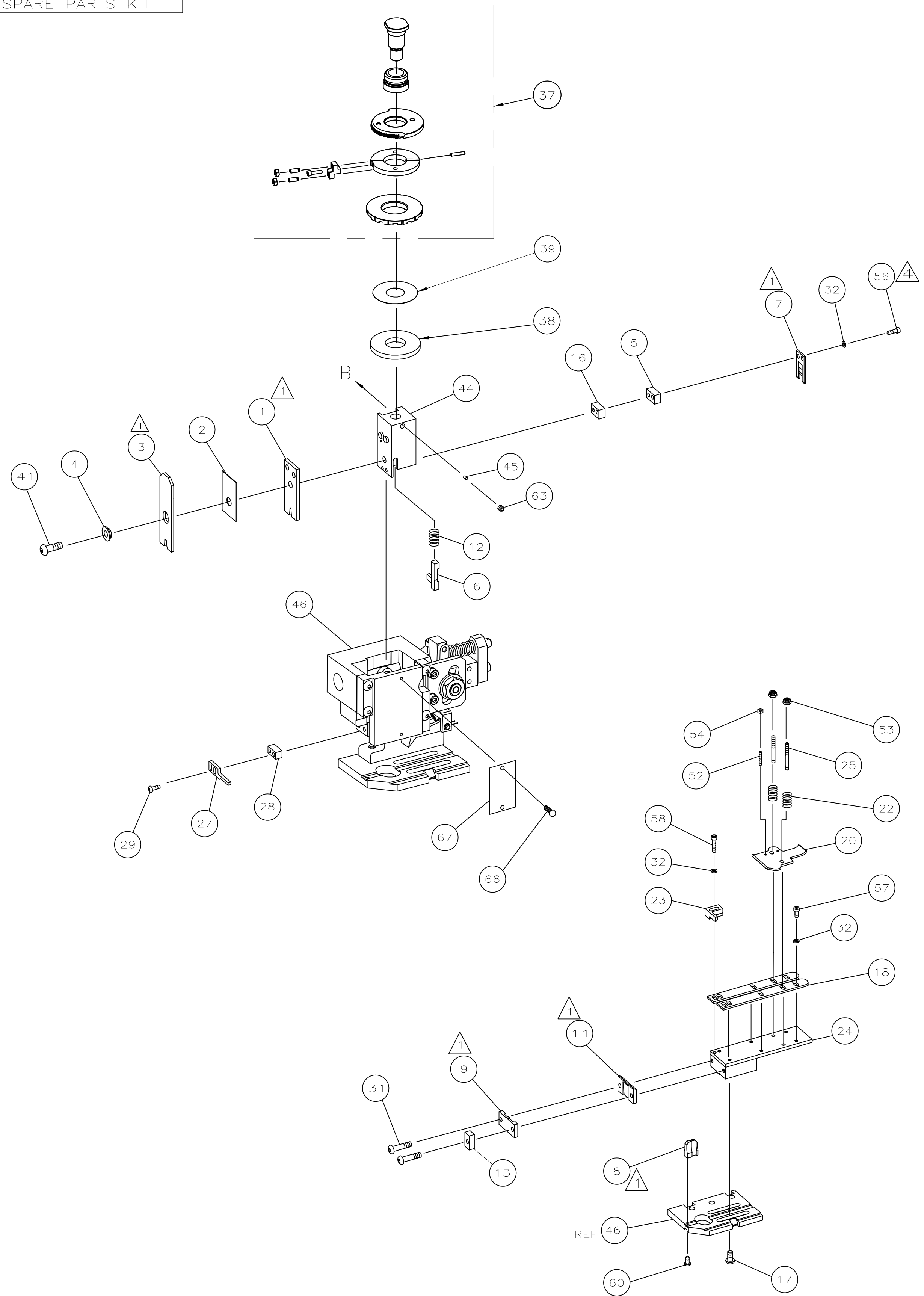
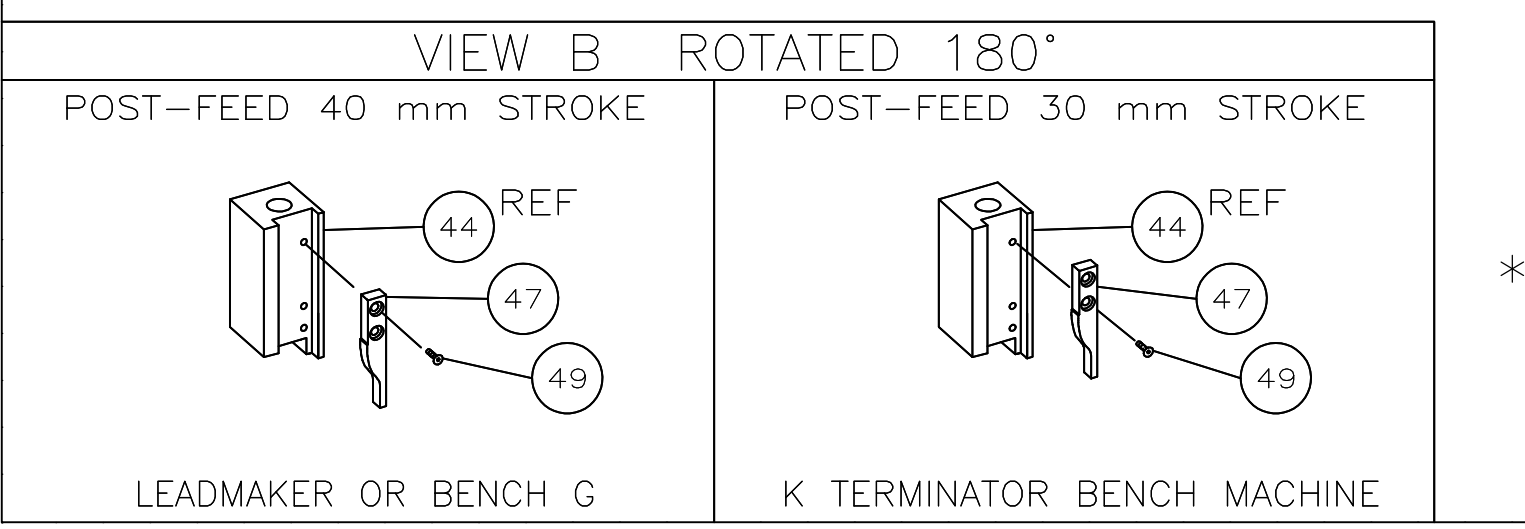
CRIMP DATA AMP TERMINAL AMP CRIMP SPECS			
TERMINAL NAME: .250" SERIES FASTIN-FASTON REC. AMPLIVAR			
CRIMP	SIZE	TYPE	RANGE
WIRE	2.54 [.100 IN]	F	0.90-1.60Ø
INSUL	4.06 [.160 IN]	OV	2.20-3.30 [.087-.130 IN]
WIRE STRIP LENGTH		APPL INSTRUCTION	
6.60 [.260 IN]		408-8323 & 408-8490	
TERMINAL APPL SPEC	NONE		FEED 21.46 [.845 IN]

TERMINALS APPLIED				
928793	-	-	-	-
969184	-	-	-	-
-	-	-	-	-
-	-	-	-	-
-	-	-	-	-
-	-	-	-	-
-	-	-	-	-
-	-	-	-	-
-	-	-	-	-

WIRE SIZE CMA	CRIMP HEIGHT *	REF SETTING
4360	1.83 ±0.05 [.072 ±.002 IN]	B 4
3810	1.75 ±0.05 [.069 ±.002 IN]	C 2
3215	1.67 ±0.05 [.066 ±.002 IN]	C 7
2665	1.58 ±0.05 [.062 ±.002 IN]	D 3
2390	1.54 ±0.05 [.061 ±.002 IN]	D 5
2150	1.51 ±0.05 [.059 ±.002 IN]	D 8
1935	1.48 ±0.05 [.058 ±.002 IN]	E 0
1640	1.44 ±0.05 [.057 ±.002 IN]	E 3
1520	1.42 ±0.05 [.056 ±.002 IN]	E 4
-	-	-
-	-	-
-	-	-
-	-	-
-	-	-
-	-	-

SET UP GAGE 458638-3 LAYOUT L1529005

- △ RECOMMENDED SPARE PARTS.
- 2. GREASE RAM, CAM, CAM FOLLOWER AND FEED ROD LIGHTLY.
- 3. LUBRICATE DAILY PER THE APPLICATOR INSTRUCTION SHEET SUPPLIED WITH THE APPLICATOR.
- △ CUT TO LENGTH AT ASSEMBLY



QTY	REQD	PER	ASSY	PART NO	DESCRIPTION	ITEM NO
-	1	1		1529005	PRINT, APPLICATOR LOG SHEET	73
-	1	1		1338705-4	DOCUMENTATION PACKAGE	72
-						71
-						70
-						69
-						68
-	1	1		461264-5	PLATE, IDENTIFICATION	67
-	2	2		21017-2	SCR,DRIVE(#2X.19)ID PLATE	66
-						65
-						64
-	1	1		3-18031-0	SCR,SKT SET(M6X6)RAM	63
-						62
-						61
-	1	1		18024-7	SCR,BHC(M4X10)ANVIL	60
-						59
-	2	2		1-18023-3	SCR,SHC(M4X16)HOLD DOWN	58
-	5	5		18023-9	SCR,SHC(M4X6)STRIP GUIDE	57
-	2	2		9-18023-6	SCR,SHC(M4X14)SLUG BLADE	56
-						55
-	2	2		18029-1	NUT,HEX(M3)DRAG	54
-	2	2		986965-1	NUT,HEX SL(M4)DRAG STUD	53
-	2	2		2-18032-2	SCR,SKT SET(M3X10)DRAG	52
-						51
-						50
-	1	1		18024-3	SCR,BHC(M3X10)CAM	49
-						48
-	1	1		1338676-1	CAM, POST-FEED 30 & 40 mm ST	47
-	1	1		1338662-1	APPLICATOR, BASIC (SUBASSY)	46
-	1	1		690191-1	PLUG, NYLON	45
-	1	1		1320998-1	RAM	44
-						43
-						42
-	1	1		2-18024-6	SCREW,BHC(M8X25)CRIMPER	41
-						40
-	1	1		690125-1	SHIM SUBASSY	39
-	1	1		469367-9	SPACER, FINE ADJUST	38
-	1	1		879103-3	FINE ADJUST HEAD SUBASSY	37
-						36
-						35
-						34
-						33
-	9	9		18025-2	WASHER,LOCK(M4)SHEAR BL	32
-	2	2		1-18024-0	SCR,BHC(M4X20)SHEAR PL	31
-						30
-	2	2		18024-8	SCR,BHC(M4X12)STRIPPER	29
-	1	1		3-690451-2	SPACER, STRIPPER	28
-	1	1		240639-1	STRIPPER	27
-						26
-	2	2		1320906-1	DRAG, STUD	25
-	1	1		1320995-3	STRIP GUIDE	24
-	1	1		240825-4	PLATE, STRIP HOLD DOWN	23
-	2	2		4-22281-1	SPRING, DRAG	22
-						21
-	1	1		1338665-1	DRAG, STOCK	20
-						19
-	2	2		1338663-5	GUIDE, LOWER STRIP	18
-	4	4		1-18024-8	SCR,BHC(M6X12)STRIP GD PL	17
-	1	1		1338708-1	SPACER, SLUG BLADE	16
-						15
-						14
-	1	1		690481-7	SPACER, HOLD DOWN	13
-	1	1		23846-1	SPRING, HOLD DOWN	12
-	1	1		240833-4	PLATE, REAR SHEAR	11
-						10
-	1	1		690495-4	PLATE, FRONT SHEAR	9
-	1	2		1333218-1	ANVIL	8
-	1	1		690474-3	BLADE, SLUG	7
-	1	1		2-455892-4	HOLD DOWN, TERMINAL	6
-	1	1		240641-4	SPACER, SLUG BLADE	5
-	1	1		238009-1	SPACER, BLOCK CRIMPER	4
-	1	2		318903-3	CRIMPER, INSULATION	3
-	1	1		455888-4	SPACER, CRIMPER	2
-	1	2		456407-7	CRIMPER, WIRE	1
-77	-71	-1		PART NO	DESCRIPTION	ITEM NO

THIS DRAWING IS A CONTROLLED DOCUMENT.

DNW M. CLIFFORD 02MAY01
 CHK
 APVD F. BACKHURST 02MAY01

Tyco Electronics Corporation
 Harrisburg, PA 17105-3608

NAME: FINE ADJ END FD HD-I APPL
 PRODUCT SPEC: -
 APPLICATION SPEC: -

SIZE: A1 CAGE CODE: 00779 DRAWING NO: 1529005
 RESTRICTED TO: -

CUSTOMER DRAWING SCALE: - SHEET: 1 OF 1 REV: D

* WARNING:
 ON INSTALLATION, SET WIRE DISC TO LARGEST WIRE SIZE SETTING.
 USE OF SETTINGS BELOW MIN REQ'D CRIMP HEIGHT SETTING WILL CAUSE DAMAGE TO CRIMP TOOLING.