

ENG210D

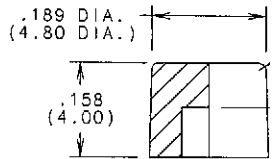
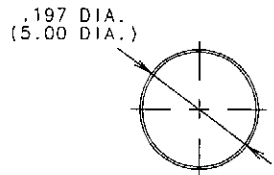
TE
K
S
JD
35

PART NUMBER EXAMPLE
38HH2040-A-2

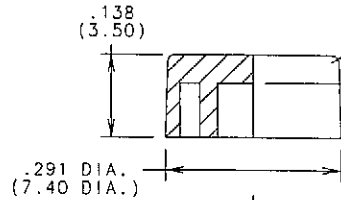
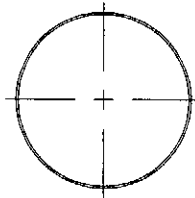
MODEL #	SIZE	COLOR
38HH2040	A = .197" DIA. B = .291" DIA.	1 = WHITE 2 = BLACK 3 = RED 4 = ORANGE 5 = YELLOW 6 = GREEN 7 = BLUE 8 = BROWN 9 = GRAY

NOTES:
1. CAPS FIT SUB-MINIATURE PUSHBUTTON SWITCHES

"A" SIZE



"B" SIZE



UNLESS OTHERWISE SPECIFIED TOLERANCES AND DIMENSIONS ARE IN INCHES LINEAR ± .015 DIAMETERS ± .010 ANGULAR ± 1° LIMITS APPLY BEFORE FINISHING DO NOT SCALE THIS PRINT	APPROVED DATE RTK 11-3-05	Grayhill GRAYHILL, INC. 561 HILLGROVE AVE. PHONE (708) LA GRANGE, IL 60525 354-1040
	CHECKED DATE JOD 11-3-05	
CRITICAL CHARACTERISTIC FLAGS PER GRAYHILL SPEC.SOP2338 -- CRITICAL CHARACTERISTIC FLAG -- Cpk REQUIRED -- S.P.C. FLAG (CONTROL CHART REQ'D ON FEATURE SPECIFIED)	DRAWN DATE CWS 11-3-05	BUTTON CAP
	FINISH	
	MATERIAL	CAGE NO. 81073
		SIZE B
		DWG. NO. 38HH2040-X
		ISSUE B
CADAM DRAWING: 38HH2040-X_B_001		SCALE 5:1
	UNIT WEIGHT	SHEET 1 OF 1