

THIS DRAWING IS UNPUBLISHED.

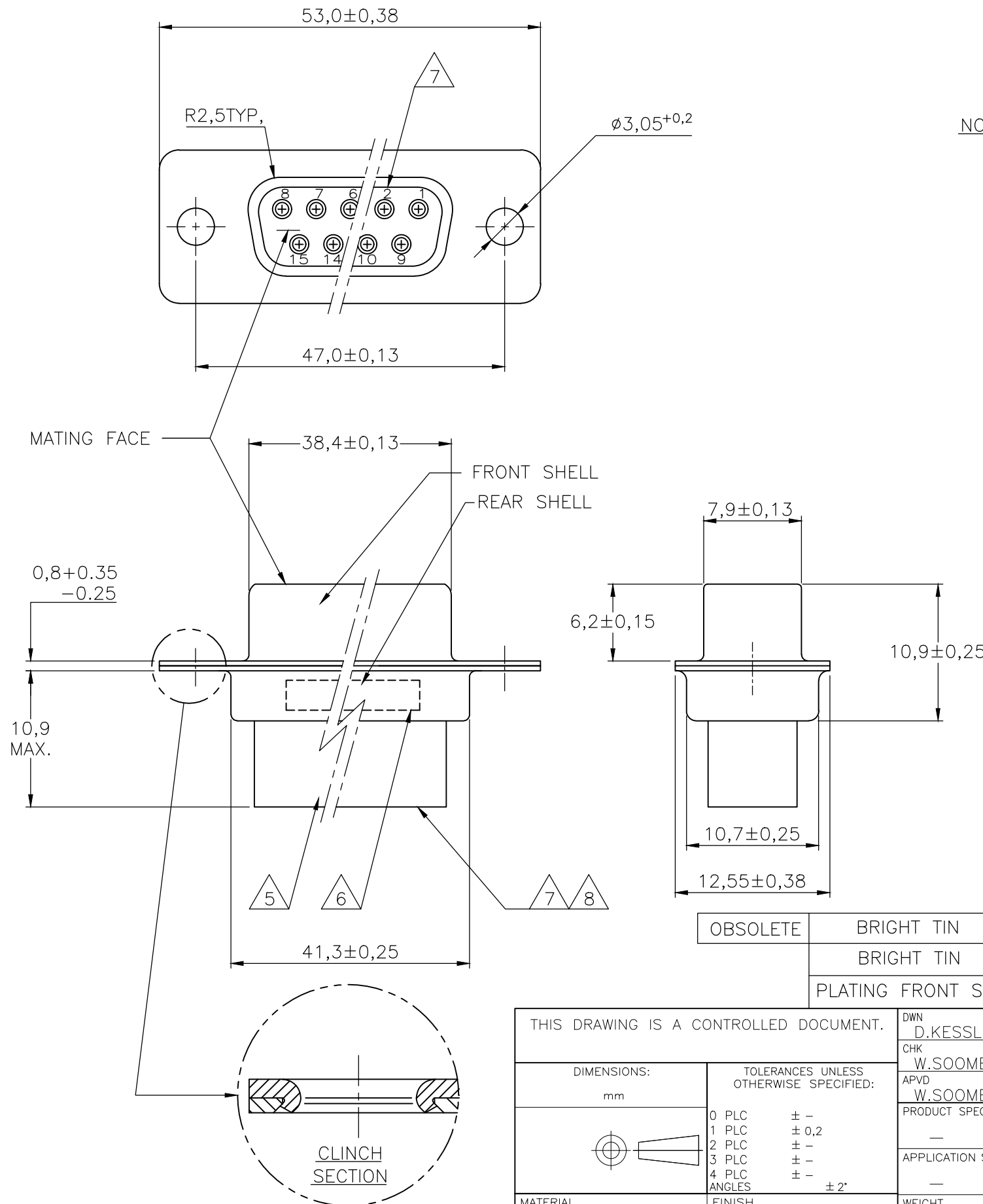
RELEASED FOR PUBLICATION

ALL RIGHTS RESERVED.

© COPYRIGHT - TE Connectivity Ltd.

REVISIONS

P	LTR	DESCRIPTION	DATE	DWN	APVD
	P	REVISED PER ECO-17-014522	26APR2018	AP	DG



NOTES:

- 1 THIS RECEPTACLE ACCEPTS SIZE 20 REC. CONTACTS.
 - 2 MAXIMUM WIRE INSULATION RECOMMENDED FOR USE WITH THIS RECEPTACLE IS 1,73 DIA. MAX..
 - 3 RETENTION TINES ARE AN INTEGRAL PART OF INSERT.
 - 4 FOLLOWING INSERTION/REMOVAL TOOLS ARE RECOMMENDED FOR USE WITH THESE CONNECTORS:
 32-28AWG/28-24AWG CONTACTS
 91067-3 INSERTION/REMOVAL
 726363-1 INSERTION ONLY
 24-20AWG CONTACTS
 726363-1 INSERTION ONLY
 726364-1 REMOVAL ONLY
- 5 INSERTS: GLASSFILLED SELF-EXTINGUISHING PBT, COLOR BLACK.
- 6 TE, PARTNUMBER AND DATE CODE; INK STAMPED.
- 7 RAISED CAVITY IDENTIFICATION 0,8 HIGH.
- 8 RAISED CAVITY IDENTIFICATION NUMBERS ON WIRE SIDE ARE WHITENED FOR 164533-9.

OBSOLETE	BRIGHT TIN	BRIGHT TIN	STEEL	164533-9	8
	BRIGHT TIN	BRIGHT TIN	STEEL	164533-4	
	PLATING FRONT SHELL	PLATING REAR SHELL	MATERIAL SHELLS	PARTNUMBER	

THIS DRAWING IS A CONTROLLED DOCUMENT.		DWN D.KESSLER	11FEB99	STE TE Connectivity Ltd.	
DIMENSIONS: mm		CHK W.SOOMERS	APVD W.SOOMERS		
TOLERANCES UNLESS OTHERWISE SPECIFIED:		PRODUCT SPEC		NAME 25 POS HDP-20 RECEPTACLE CONNECTOR SIZE 3	
0 PLC ± -		APPLICATION SPEC		SIZE	RESTRICTED TO
1 PLC ± 0,2		-		CAGE CODE	
2 PLC ± -		-		DRAWING NO	
3 PLC ± -		-		SCALE	
4 PLC ± -		-		SHEET	
ANGLES ± 2°		WEIGHT		1 OF 1	REV P
MATERIAL		CUSTOMER DRAWING			
FINISH		A3			
-		-			