

# Ferrite Bead

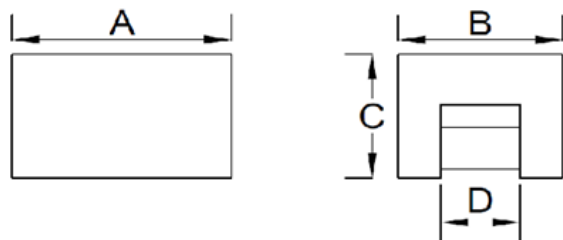
BPH322521W5-350T

## 1. Features

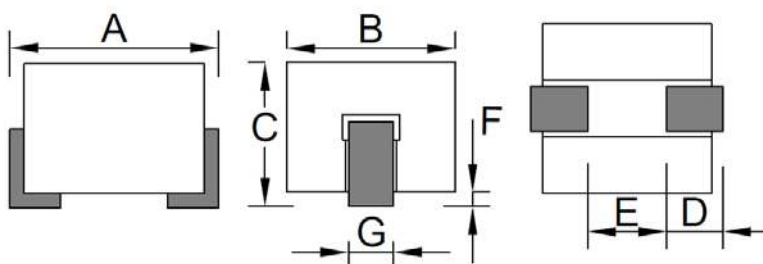
- 100% Lead(Pb) & Halogen-Free and RoHS compliant.
- Operating temperature -40~+125°C (Including self - temperature rise)



## 2. Dimension

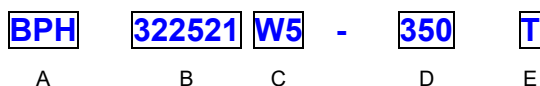


CORE SIZE			
A(mm)	B(mm)	C(mm)	D(mm)
3.10 ±0.15	2.50 ±0.15	2.10 ±0.15	0.90 ±0.15



PRODUCT SIZE						
A(mm)	B(mm)	C(mm)	D(mm)	E(mm)	F(mm)	G(mm)
3.10 ±0.15	2.50 ±0.15	2.15 ±0.15	0.85 ±0.20	1.20 ±0.20	0.00~0.10	0.70 ±0.10

## 3. Part Numbering



- A: Series  
B: Dimension  
C: Material  
D: Impedance  
E: Packaging

Ferrite Core  
350=35Ω  
T=Taping and Reel

## 4. Specification

TAI-TECH Part Number	ELECTRICAL REQUIREMENTS 1			ELECTRICAL REQUIREMENTS 2			DCR (mΩ) Max.	Rated Current(A)
	Impedance (Ω)	Tolerance (%)	Test Frequency (MHz)	Impedance (Ω)	Tolerance (%)	Test Frequency (MHz)		ΔT=40°C TYP.
BPH322521W5-350T	25	±25	25	35	±25	100	0.60	21.0

Note:

Rated Current :

(1) : Chroma high current test fixture.

### Typical Impedance v.s. Frequency Curve

