

- 1
- 2
- 3
- 4
- 5
- 6
- 7
- 8
- 9
- 10
- 11
- 12
- 13
- 14
- 15
- 16
- 17
- 18

MATERIAL

Deburred aluminium, sanblasted matte finish.

STANDARD EXECUTION

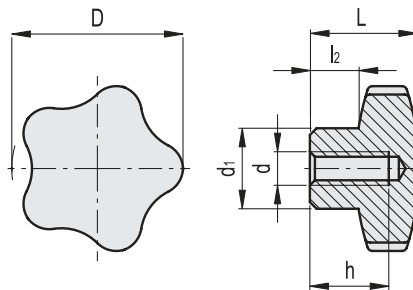
Threaded blind hole.

SPECIAL EXECUTIONS ON REQUEST

- Solid hub, sand-blasted matte finish.
- Threaded pass-through hole.



ELESA Original design



INCH

Code	Description	D	d2B	L-.039	d1-.020	l2	h	⚖️
90169521	VCM.40-1/4-20-MT	1.57	1/4-20	0.98	0.59	0.49	0.59	0.07
90169522	VCM.40-5/16-18-MT	1.57	5/16-18	0.98	0.59	0.49	0.59	0.07
90169526	VCM.50-5/16-18-MT	1.97	5/16-18	1.26	0.75	0.63	0.71	0.13
90169527	VCM.50-3/8-16-MT	1.97	3/8-16	1.26	0.75	0.63	0.71	0.13
90169531	VCM.60-3/8-16-MT	2.36	3/8-16	1.57	0.83	0.79	0.87	0.22
90169532	VCM.60-1/2-13-MT	2.36	1/2-13	1.57	0.83	0.79	0.87	0.21
90169536	VCM.70-1/2-13-MT	2.76	1/2-13	1.81	1.02	0.91	1.1	0.35
90169537	VCM.70-5/8-11-MT	2.76	5/8-11	1.81	1.02	0.91	1.1	0.35

Clamping knobs