

4

3

2

1


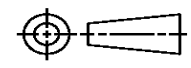
THIS DRAWING IS UNPUBLISHED. RELEASED FOR PUBLICATION  
© COPYRIGHT ALL RIGHTS RESERVED.

LOC		DIST		REVISIONS			
P	LTR	DESCRIPTION		DATE	DWN	APVD	
	B1	ECR-14-002309		14FEB2014	GK	HMR	

# REPLACED BY OCEAN STYLE APPLICATOR PART NUMBER 2151488-1

FOR REPLACEMENT PARTS FOR APPLICATOR 1528580  
REFER TO ADDITIONAL PAGE(S). SPARE PARTS KIT (IF LISTED)  
WILL REMAIN AVAILABLE.

THE REPLACEMENT OCEAN STYLE APPLICATOR HAS THE  
SAME TERMINATOR/PRESS INTERFACE AS APPLICATOR  
1528580

THIS DRAWING IS A CONTROLLED DOCUMENT.		DWN	GOPALAKRISHNA HV			TE Connectivity		
DIMENSIONS:		CHK	RAGHAVENDRA			NAME		
		TOLERANCES UNLESS OTHERWISE SPECIFIED:		APVD	FINE ADJ SIDE FD HD-I APPL			
		0 PLC ±	1 PLC ±	PRODUCT SPEC		APPLICATION SPEC		
MATERIAL		2 PLC ±	3 PLC ±	4 PLC ±	SIZE	CAGE CODE	DRAWING NO	RESTRICTED TO
FINISH		ANGLES ±	WEIGHT		A3		©- 1528580	
CUSTOMER DRAWING				SCALE	SHEET	1	OF	2
				REV	B1			

THIS DRAWING IS UNPUBLISHED. RELEASED FOR PUBLICATION.  
 © COPYRIGHT BY TYCO ELECTRONICS CORPORATION. ALL RIGHTS RESERVED.

REVOLUTIONS		DATE	DWN	APPROV
A	66			
B	ECR-07-024464	10-2007	MY	GB

PART NUMBER	REV	FIRST USED	TERMINATOR	FEED TYPE	DESCRIPTION
1528580-1	B	-	LEADMAKER	MECH POST FEED	CUTS CARRIER
1528580-2	B	-	BENCH	MECH PRE FEED	CUTS CARRIER
1528580-6	B	-	LEADMAKER	MECH POST FEED	CONTINUOUS CARRIER
7-1528580-1	B	-	LEADMAKER	MECH POST FEED	-1 AND SPARE PARTS
7-1528580-2	B	-	BENCH	MECH PRE FEED	-2 AND SPARE PARTS
7-1528580-6	B	-	LEADMAKER	MECH POST FEED	-6 AND SPARE PARTS
7-1528580-7	A	-	-	-	SPARE PARTS KIT

**CRIMP DATA AMP TERMINAL AMP CRIMP SPECS**

TERMINAL NAME: CONTACT, REC, CRIMP SNAP-IN, AMPMODU SHORT POINT

CRIMP	SIZE	TYPE	RANGE
WIRE	1.07 [.042 IN]	F	26-22 AWG
INSUL	1.57 [.062 IN]	0	0.64-1.52 [.025-.060 IN]

WIRE STRIP LENGTH: 3.18-3.96 [.125-.156 IN] | APPL INSTRUCTION: 408-8322 & 408-8490

TERMINAL APPL SPEC: 114-25038 | FEED: 6.35 [.250 IN]

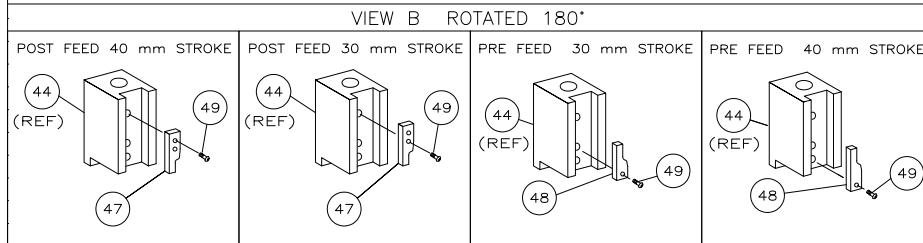
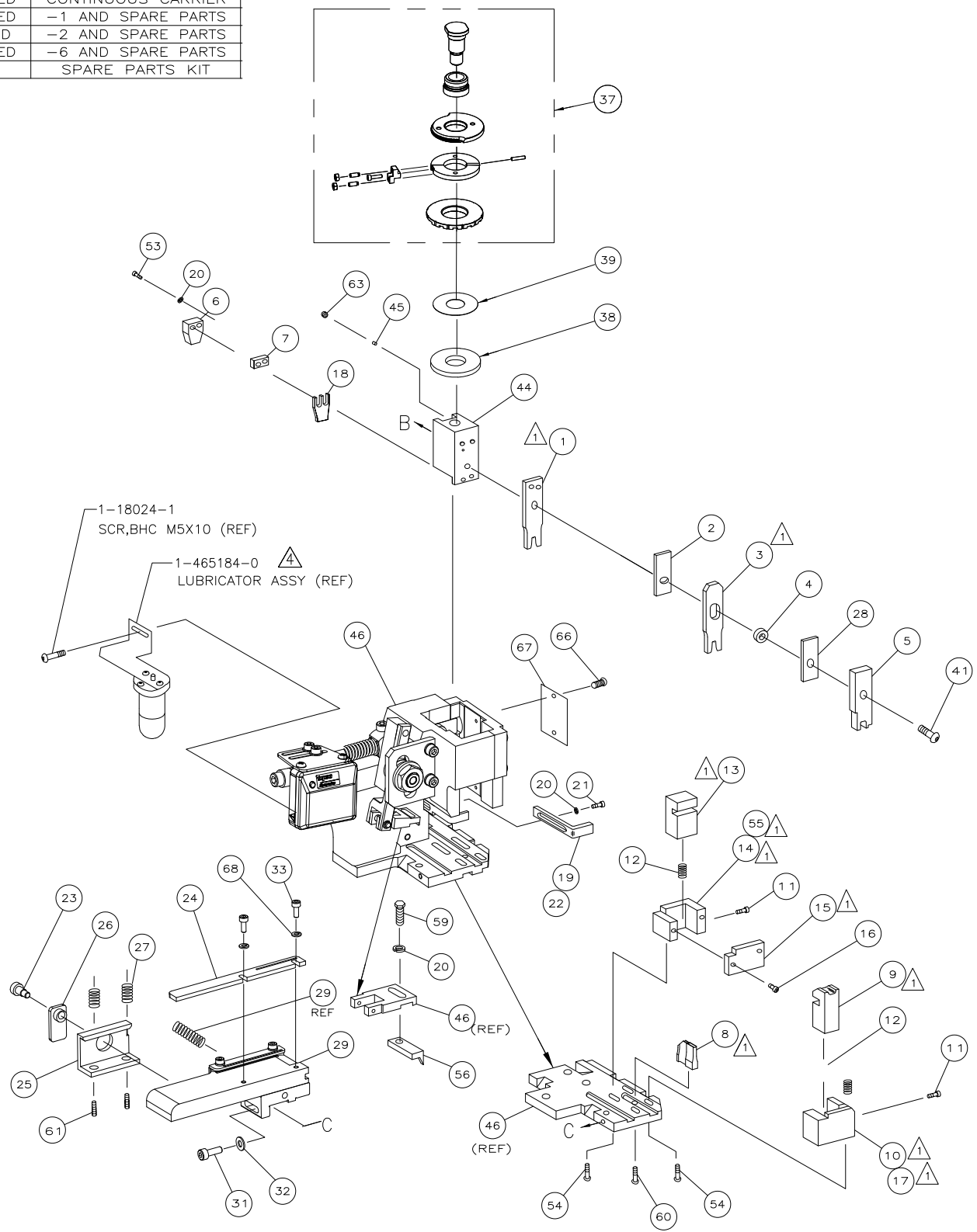
**TERMINALS APPLIED**

104480	-	-	-	-
-	-	-	-	-
-	-	-	-	-
-	-	-	-	-
-	-	-	-	-
-	-	-	-	-
-	-	-	-	-
-	-	-	-	-
-	-	-	-	-
-	-	-	-	-
-	-	-	-	-
-	-	-	-	-
-	-	-	-	-
-	-	-	-	-
-	-	-	-	-
-	-	-	-	-

WIRE SIZE mm <sup>2</sup> AWG	CRIMP HEIGHT *	REF SETTING
22 AWG	0.91 ±0.05 [.036 ±.002 IN]	B 5
0.30mm <sup>2</sup>	0.89 ±0.05 [.035 ±.002 IN]	B 8
24 AWG	0.81 ±0.05 [.032 ±.002 IN]	C 3
26 AWG	0.76 ±0.05 [.030 ±.002 IN]	C 6
-	-	-
-	-	-
-	-	-
-	-	-
-	-	-
-	-	-
-	-	-
-	-	-
-	-	-
-	-	-
-	-	-
-	-	-
-	-	-
-	-	-
-	-	-
-	-	-
-	-	-
-	-	-

SET UP GAGE: 458637-3 | LAYOUT: L1426206

- 1. RECOMMENDED SPARE PARTS.
- 2. GREASE RAM, CAM, CAM FOLLOWER AND FEED ROD LIGHTLY.
- 3. LUBRICATE DAILY PER THE APPLICATOR INSTRUCTION SHEET SUPPLIED WITH THE APPLICATOR.
- 4. CERTAIN TERMINALS REQUIRE LUBRICATION. REFER TO THE APPLICATOR INSTRUCTION SHEET FOR MORE INFORMATION.



**\* WARNING:**  
 ON INSTALLATION, SET WIRE DISC TO LARGEST WIRE SIZE SETTING. USE OF SETTINGS BELOW MIN REQUIRED CRIMP HEIGHT SETTING WILL CAUSE DAMAGE TO CRIMP TOOLING.

QTY	REQD	PER	ASSY	PART NO	DESCRIPTION	ITEM NO	
-	1	1	1	1	1528580	PRINT, APPLICATOR LOG SHEET	73
-	1	1	1	1	1338705-3	DOCUMENTATION PACKAGE	72
-	2	2	2	2	18025-1	WASHER, LOCK(M3) STR GDE	71
-	1	1	1	1	461264-5	PLATE, IDENTIFICATION	70
-	2	2	2	2	21017-2	SCR,DRIVE(#2x.19)ID PLATE	69
-	1	1	1	1	3-18031-0	SCR,SKT SET(M6X6)RAM	68
-	2	2	2	2	2-18032-5	SCR,SKT SET (M5X20)DRAG	67
-	1	1	1	1	18024-7	SCR,BHC(M4X10)ANVIL	66
-	1	1	1	1	5-18022-2	SCR,HEX(M4X8)FEED FINGER	65
-	1	1	1	1	1338683-1	PAWL, FEED	64
-	1	-	1	-	1338723-1	HOLDER,SHEAR, REAR (NO CUT)	63
-	4	4	4	4	18024-8	SCR,BHC(M4X12)SHEAR HOLDER	62
-	2	2	2	2	1-18023-3	SCR,SHC(M4x16)TERM HLD DWN	61
-	1	1	1	1	18024-3	SCR,BHC(M3X10)CAM	60
-	1	1	1	1	1338675-1	CAM, PRE FEED 30 & 40 mm ST	59
-	1	1	1	1	1338676-1	CAM, POST FEED 30 & 40 mm ST	58
-	1	1	1	1	1320999-3	APPLICATOR BASIC SUBASSY	57
-	1	1	1	1	690191-1	PLUG, NYLON	56
-	1	1	1	1	1338660-1	RAM	55
-	1	1	1	1	2-18024-6	SCR,BHC(M8X25)RAM	54
-	1	1	1	1	690125-1	SHIM SUBASSY	53
-	1	1	1	1	469367-8	SPACER, FINE ADJUST	52
-	1	1	1	1	879103-3	FINE ADJUST HEAD SUBASSY	51
-	2	2	2	2	18023-5	SCREW,SHC(M3X12)FRT STRP GDE	50
-	1	1	1	1	18027-2	WASHER, FLAT(M4)	49
-	1	1	1	1	1-18023-2	SCR,SKT CAP(M4X12)MOUNT BLOCK	48
-	1	1	1	1	1633082-1	STRIP GUIDE PLATE ASSY	47
-	1	1	1	1	1-455888-5	SPACER, FRONT SHEAR DEP	46
-	2	2	2	2	1-22284-0	SPRING, DRAG	45
-	1	1	1	1	356835-1	LEVER, DRAG RELEASE	44
-	1	1	1	1	240792-1	DRAG, TERMINAL	43
-	1	1	1	1	1-690487-7	GUIDE, STRIP (FRONT)	42
-	1	1	1	1	980371-4	SCR,SHC SHLD	41
-	1	1	1	1	690472-6	STRIPPER	40
-	1	1	1	1	1-18023-1	SCR,SHC(M4X10)STRIPPER	39
-	4	4	4	4	18025-2	WASHER,LOCK(M4)STRIPPER	38
-	1	1	1	1	690472-5	STRIPPER	37
-	1	1	1	1	2-690518-9	HOLDER, TERMINAL	36
-	1	1	1	1	1338684-1	HOLDER, SHEAR, FRONT (NO-CUT)	35
-	2	2	2	2	18023-2	SCR,SHC(M3X6)REAR SHEAR PL	34
-	1	1	1	1	1-690691-1	PLATE, SHEAR (REAR)	33
-	1	1	1	1	1320920-1	HOLDER, SHEAR, REAR (CUT)	32
-	1	1	1	1	690463-1	SHEAR, FLOAT (REAR)	31
-	2	2	2	2	3-22280-3	SPRING, SHEAR	30
-	2	2	2	2	356885-4	STOP, SHEAR	29
-	1	1	1	1	1320921-1	HOLDER, SHEAR, FRONT (CUT)	28
-	1	1	1	1	462006-1	SHEAR, FLOAT (FRONT)	27
1	2	2	2	1	1-1333200-3	ANVIL	26
-	1	1	1	1	4-240641-6	SPACER, DEPRESSOR (REAR)	25
-	1	1	1	1	690468-2	DEPRESSOR, SHEAR (REAR)	24
-	1	1	1	1	1-455889-4	DEPRESSOR, SHEAR (FRONT)	23
-	1	1	1	1	238011-7	SPACER, BLOCK CRIMPER	22
1	2	2	2	1	8-456135-3	CRIMPER, INSULATION	21
-	1	1	1	1	455888-6	SPACER, CRIMPER	20
1	2	2	2	1	456401-3	CRIMPER, WIRE	19
-77	-76	-72	-71	-6	-2	-1	18

THIS DRAWING IS A CONTROLLED DOCUMENT.

APPROVED: F. BACKHURST (22SEP05) | NAME: FINE ADJ SIDE FD HD-1 APPL

DATE: 10/07/07 | DRAWING NO: 1528580

SCALE: 1 of 1 | REV: B