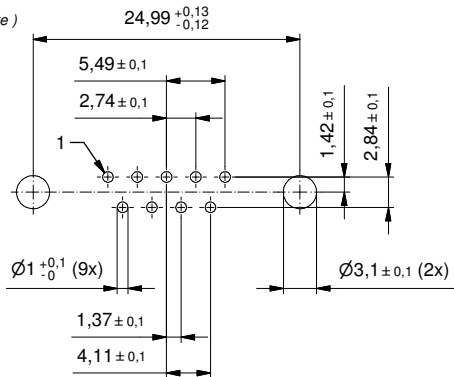


PCB hole drillings
(PCB top side) /
Leiterplattenbohrbild
(Leiterplatten Oberseite)



Technical specification:

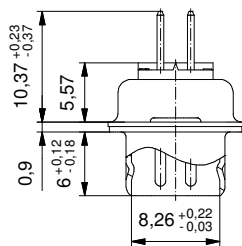
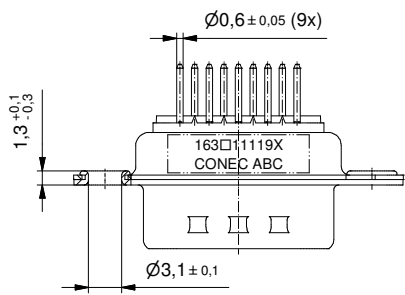
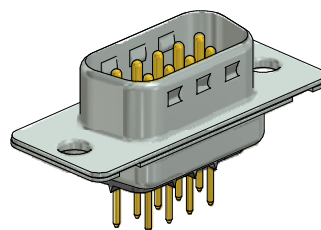
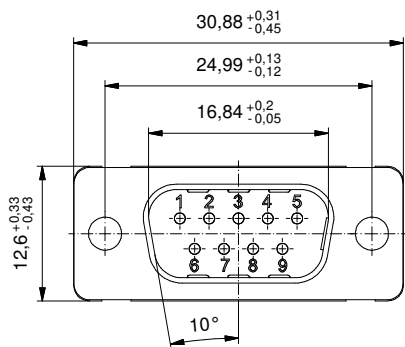
Technische Daten:

Working voltage/ Betriebsspannung:	125 V AC
Insulation resistance/ Isolationswiderstand:	≥5 GΩ
Dielectric withstanding voltage/ Spannungsfestigkeit:	1000 V, 50 Hz, 1 min.
Temperature range/ Temperaturbereich:	-55 °C ... +125 °C
Current rating/ Strombelastbarkeit:	7,5 A (UL) / 5 A (CSA, VDE)
Mating cycles/ Steckzyklen:	Quality class 1 = 500 Gütestufe 1 Quality class 2 = 200 Gütestufe 2 Quality class 3 = 50 Gütestufe 3

Materials/

Werkstoffe:

Contact/ Kontakt:	Cu alloy, Au over Ni
Insulator/ Isolierkörper:	PBT GF UL 94 V-0, black/schwarz
Shell/ Gehäuse:	Steel, Sn over Ni



(b)

Part no. / Part Marked/ Art.-Nr. / Bedruckung:	Contact plating/ Kontakt Veredelung:
163A11119X	Gold Flash over Nickel Gold über Nickel
163B11119X	20 µm Hard Gold over min. 50 µm Nickel 20 µm Gold über min. 50 µm Nickel
163C11119X	30 µm Hard Gold over min. 50 µm Nickel 30 µm Gold über min. 50 µm Nickel
dim. in mm	D-SUB Male 9pol.
Date/Datum	Name
drawn/ gez.	10.08.16 Henneboel
appd./ gepr.	10.08.16 Lehmenkühler
Index: Ind. b Ä6267 10.08.16 K.H.	dwg no / Z.-nr.: 16K1A1705
Status: InBearbeitung	DIN-A3
RoHS & REACH compliant/konform	1 / 1

scale/Maßstab:
2:1



The reproduction, distribution and utilization of this document as well as the communication of its contents to others without express authorization is prohibited. Offenders will be held liable for the payment of damages. We reserve the right to withdraw advertising and notices, without notice and without obligation of compensation, at any time and without notice.