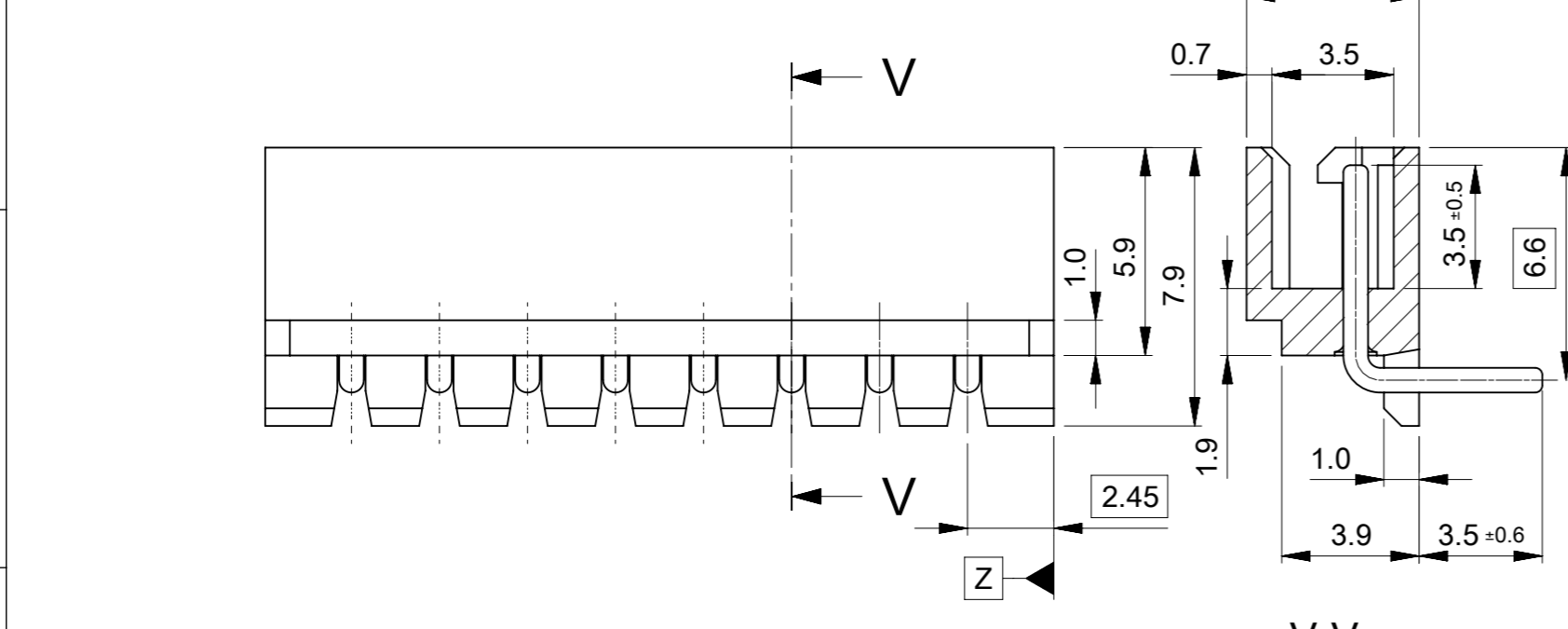


注記：  
 NOTES:  
 ① 材質：TABLE 1参照  
 MATERIAL：SEE TABLE 1  
 ② 梱包仕様書、製品仕様書、嵌合相手はSHEET 2をご参照ください。  
 PLEASE REFER TO SHEET 2 FOR PACKAGING SPECIFICATION,  
 PRODUCT SPECIFICATION AND MATE WITH.  
 ③ 発注番号：ORDER NO.  
 22057\*\*5

極数  
CIRCUIT SIZE

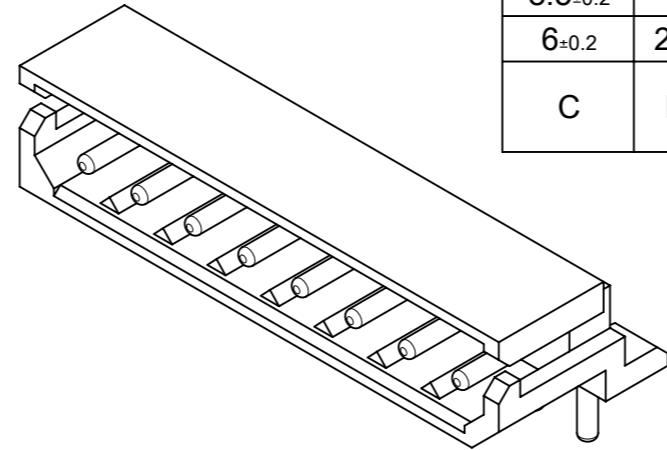


SECTION V-V

|           |      |           |                   |                      |          |                     |                    |
|-----------|------|-----------|-------------------|----------------------|----------|---------------------|--------------------|
| 38.5±0.3  | 35   | 39.9±0.3  | ポリ袋<br>POLY BAG   | 5268NA               | 526815A  | 22057155            | 15                 |
| 36±0.3    | 32.5 | 37.4±0.3  |                   |                      | 526814A  | 22057145            | 14                 |
| 33.5±0.3  | 30   | 34.9±0.3  |                   |                      | 526813A  | 22057135            | 13                 |
| 31±0.3    | 27.5 | 32.4±0.3  |                   |                      | 526812A  | 22057125            | 12                 |
| 28.5±0.25 | 25   | 29.9±0.25 |                   |                      | 526811A  | 22057115            | 11                 |
| 26±0.25   | 22.5 | 27.4±0.25 |                   |                      | 526810A  | 22057105            | 10                 |
| 23.5±0.25 | 20   | 24.9±0.25 |                   |                      | 526809A  | 22057095            | 9                  |
| 21±0.25   | 17.5 | 22.4±0.25 |                   |                      | 526808A  | 22057085            | 8                  |
| 18.5±0.25 | 15   | 19.9±0.25 |                   |                      | 526807A  | 22057075            | 7                  |
| 16±0.25   | 12.5 | 17.4±0.25 |                   |                      | 526806A  | 22057065            | 6                  |
| 13.5±0.25 | 10   | 14.9±0.25 |                   |                      | 526805A  | 22057055            | 5                  |
| 11±0.25   | 7.5  | 12.4±0.25 |                   |                      | 526804A  | 22057045            | 4                  |
| 8.5±0.2   | 5    | 9.9±0.2   |                   |                      | 526803A  | 22057035            | 3                  |
| 6±0.2     | 2.5  | 7.4±0.2   | 526802A           | 22057025             | 2        |                     |                    |
| C         | B    | A         | 梱包形態<br>PACKAGING | シリーズ番号<br>SERIES NO. | ENG. NO. | ③ 発注番号<br>ORDER NO. | 極数<br>CIRCUIT SIZE |

① TABLE 1

| 番号<br>NO. | 部品<br>PART       | 材質<br>MATERIAL  |   |
|-----------|------------------|---|---|
| ①         | ハウジング<br>HOUSING | ポリアミド(PA), UL94V-0, 色: ナチュラル(白)<br>POLYAMIDE(PA), UL94V-0, COLOR: NATURAL (WHITE) |   |
| ②         | ピン<br>PIN        | 母材<br>BASE METAL  | 黄銅(Φ0.7)<br>BRASS (Φ0.7)                          |
|           |                  | めっき<br>PLATING  | 錫めっき : 3 MICROMETER MIN.<br>TIN                   |
|           |                  | 下地めっき<br>UNDERPLATING   | 銅めっき : 1 MICROMETER MIN.<br>COPPER (UNDERPLATING) |

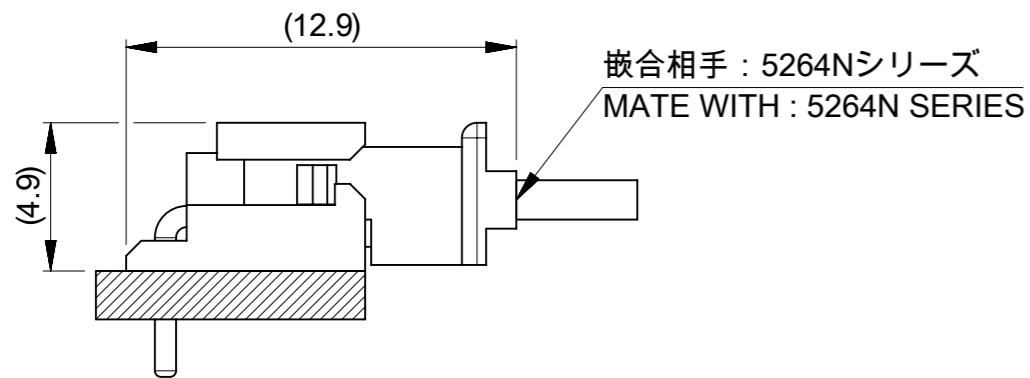
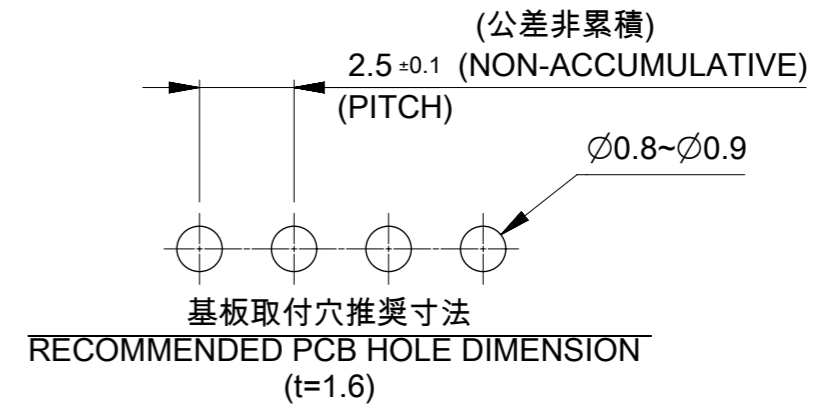
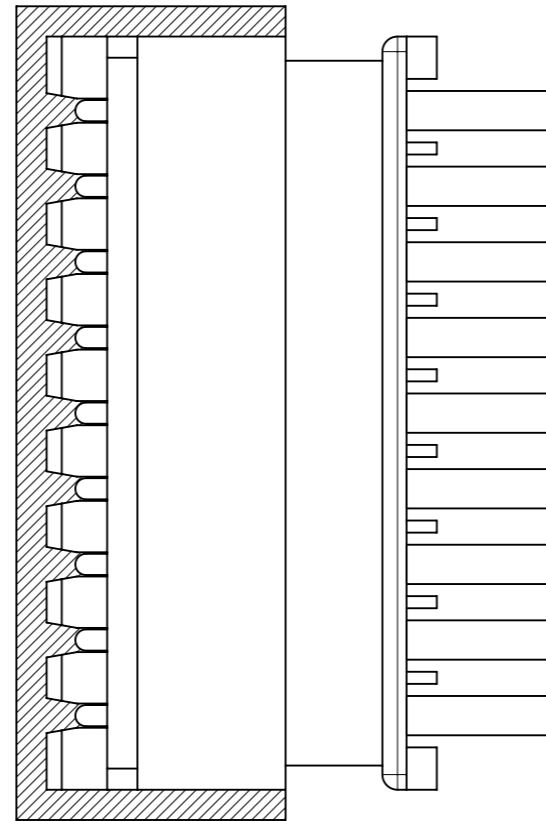
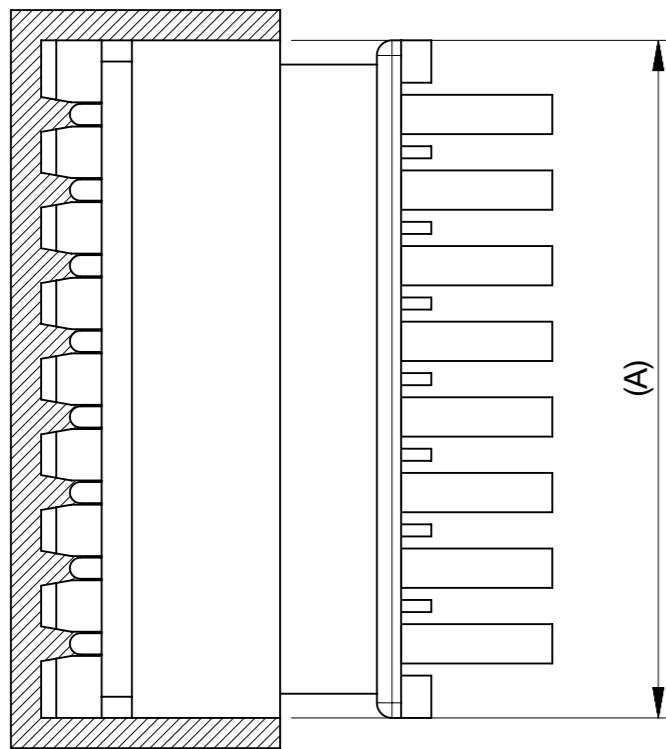


THIS DRAWING CONTAINS INFORMATION THAT IS PROPRIETARY TO MOLEX ELECTRONIC TECHNOLOGIES, LLC AND SHOULD NOT BE USED WITHOUT WRITTEN PERMISSION

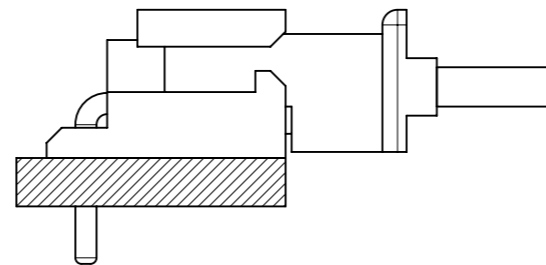
|  |                        |                                |                     |
|--|------------------------|--------------------------------|---------------------|
| DIMENSION UNITS<br>mm                                | SCALE<br>NTS           | CURRENT REV DESC:              |                     |
| GENERAL TOLERANCES (UNLESS SPECIFIED)                |                        | EC NO: 727270                  |                     |
| ANGULAR TOL ± 3.0°                                   |                        | DRWN: SOKUMURA01               | 2022/11/30          |
| 4 PLACES ±   |                        | CHK'D: SAKIYAMA                | 2023/03/09          |
| 3 PLACES ±   |                        | APPR: AIDA                     | 2023/03/09          |
| 2 PLACES ± 0.2                                       |                        | INITIAL REVISION:              |                     |
| 1 PLACE ± 0.2  |                        | DRWN: ABABU01                  | 2019/06/21          |
| 0 PLACES ±   |                        | APPR: KOMURAKAMI               | 2020/05/13          |
| DRAFT WHERE APPLICABLE MUST REMAIN WITHIN DIMENSIONS | THIRD ANGLE PROJECTION | DRAWING<br>A3-SIZE             | SERIES<br>5268      |
|  |                        | MATERIAL NUMBER<br>SEE CHART   | CUSTOMER<br>GENERAL |
|  |                        | DOCUMENT NUMBER<br>52680001-SD | DOC TYPE<br>PSD     |
|  |                        | DOC PART<br>000                | REVISION<br>B       |
|  |                        | SHEET NUMBER<br>1 OF 2         |                     |

△ 適用製品及び各種仕様書  
 APPLICABLE PRODUCTS AND VARIOUS SPECIFICATIONS

|                                  |                    |                     |
|----------------------------------|--------------------|---------------------|
| 梱包仕様書<br>PACKAGING SPECIFICATION | ORDER NO.          | SPECIFICATION NO.   |
|                                  | 22057**5           | SPK-5268-001 PS 001 |
| 嵌合相手<br>MATE WITH                | RECEPTACLE HOUSING |                     |
| シリーズ番号<br>SERIES NO.             | 5264N              |                     |
| 製品仕様書<br>PRODUCT SPECIFICATION   | PS-5264-001 PS 001 |                     |



2-8極  
 2-8 CIRCUIT



9-15極  
 9-15 CIRCUIT

嵌合図  
 MATING CONNECTORS

|   |  |                        |  |                             |  |          |  |  |  |
|---|--|------------------------|--|-----------------------------|--|----------|--|--|--|
| THIS DRAWING CONTAINS INFORMATION THAT IS PROPRIETARY TO MOLEX ELECTRONIC TECHNOLOGIES, LLC AND SHOULD NOT BE USED WITHOUT WRITTEN PERMISSION |  |                        |  |                             |  |          |  |  |  |
| DIMENSION UNITS   |  | SCALE                  |  | CURRENT REV DESC:           |  |          |  | <b>molex</b>                           |  |
| mm  |  | NTS                    |  |                             |  |          |  |  |  |
| GENERAL TOLERANCES (UNLESS SPECIFIED)   |  |                        |  | EC NO: 727270               |  |          |  | MINI-SPOX 2.5 W/B                      |  |
| ANGULAR TOL ± 3.0 °   |  |                        |  | DRWN: SOKUMURA01 2022/11/30 |  |          |  | RIGHT ANGLE PLUG ASSEMBLY WITHOUT COIN |  |
| 4 PLACES ±  |  |                        |  | CHK'D: SAKIYAMA 2023/03/09  |  |          |  | COPPER UNDERPLATING                    |  |
| 3 PLACES ±  |  |                        |  | APPR: AIDA 2023/03/09       |  |          |  | PRODUCT CUSTOMER DRAWING               |  |
| 2 PLACES ± 0.2  |  |                        |  | INITIAL REVISION:           |  |          |  | DOCUMENT NUMBER                        |  |
| 1 PLACE ± 0.2   |  |                        |  | DRWN: ABABU01 2019/06/21    |  |          |  | 52680001-SD                            |  |
| 0 PLACES ±  |  |                        |  | APPR: KOMURAKAMI 2020/05/13 |  |          |  | PSD 000 B                              |  |
| DRAFT WHERE APPLICABLE MUST REMAIN WITHIN DIMENSIONS  |  | THIRD ANGLE PROJECTION |  | DRAWING                     |  | SERIES   |  | MATERIAL NUMBER                        |  |
|   |  |                        |  | A3-SIZE                     |  | 5268     |  | SEE SHEET 1                            |  |
|   |  |                        |  |                             |  | CUSTOMER |  | SHEET NUMBER                           |  |
|   |  |                        |  |                             |  | GENERAL  |  | 2 OF 2                                 |  |