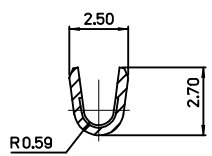
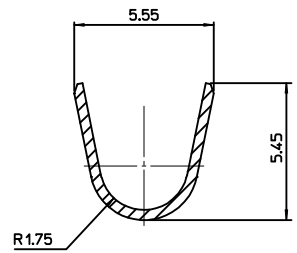


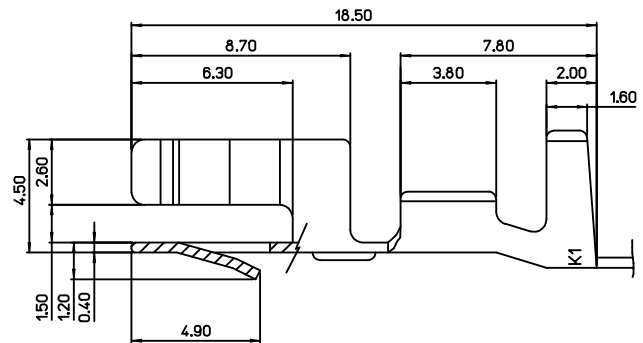
ISOVIEW



SECTION B-B'



SECTION A-A'

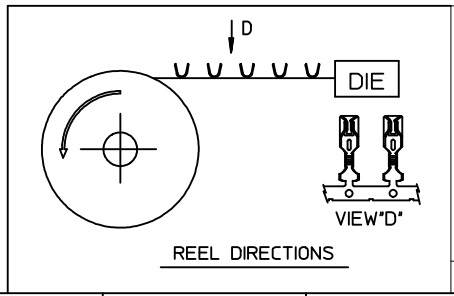


NOTES

- 1.MATERIAL : BRASS(C26000)
- 2.FINISH : PRE-TIN PLATING
- 3.APPLICABLE HOUSING SOCKET : 68147,49505
- 4.APPLICABLE WIRE SEAL : 49505-9001
- 5.WEDGE BULB INSERTION FORCE : 3.5 Kgf MAX.
WEDGE BULB RETENSION FORCE : 0.5 Kgf MIN.
- 6.APPLICABLE WEDGE BASE CAP : W2.1X9.5d(W5W,W16W)
- 7.APPLICABLE WIRE SIZE : AVS 0.5-0.85SQ, FLY-A 0.75SQ

<TABLE 1>

354779002	35477-9002
MATERIAL NO.	ORDER NO.



REVISED
 EC NO: KTR2015-0116
 DRWN:JKSE001 2015/06/16
 CHKD:
 APPR:JYCH01 2015/06/22

QUALITY SYMBOLS 	GENERAL TOLERANCES (UNLESS SPECIFIED)		DIMENSION STYLE MM ONLY		SCALE 5:1	DESIGN UNITS METRIC	THIRD ANGLE PROJECTION
	mm	INCH	DRAWN BY SMKIM	DATE 2005/08/09	TITLE WEDGE TERMINAL		
	4 PLACES ± ---	± ---	CHECKED BY BCY00N	DATE 2005/08/09	MATERIAL NO. SD-35477-001		
	3 PLACES ± ---	± ---	APPROVED BY CWLEE	DATE 2005/08/09	DOCUMENT NO. SD-35477-001		
	2 PLACES ± 0.2	± ---	DRAFT WHERE APPLICABLE MUST REMAIN WITHIN DIMENSIONS		SHEET NO. 1 OF 1		
	1 PLACE ± ---	± ---	SIZE A3		THIS DRAWING CONTAINS INFORMATION THAT IS PROPRIETARY TO MOLEX INCORPORATED AND SHOULD NOT BE USED WITHOUT WRITTEN PERMISSION		
	ANGULAR ± 1 °						