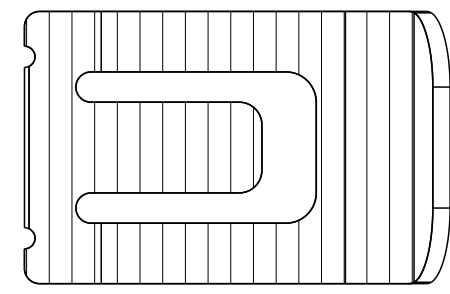
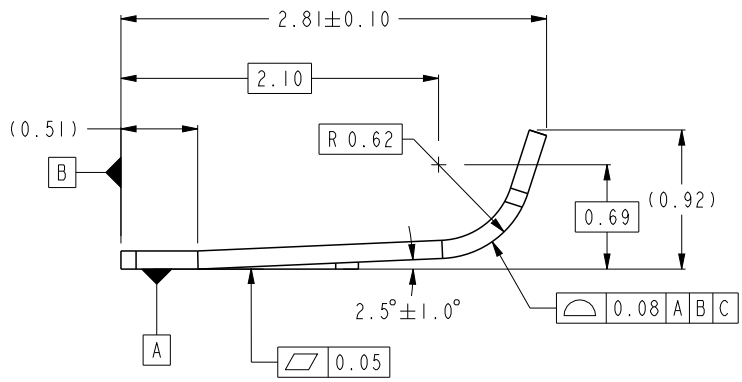


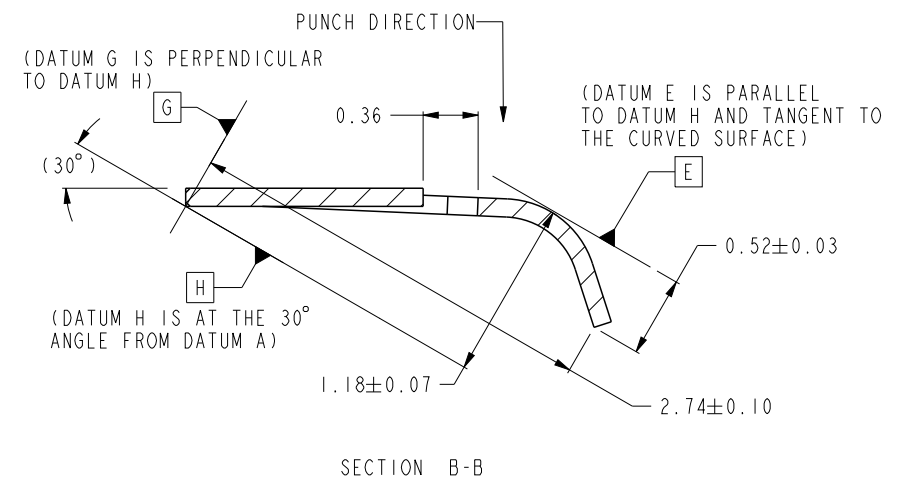
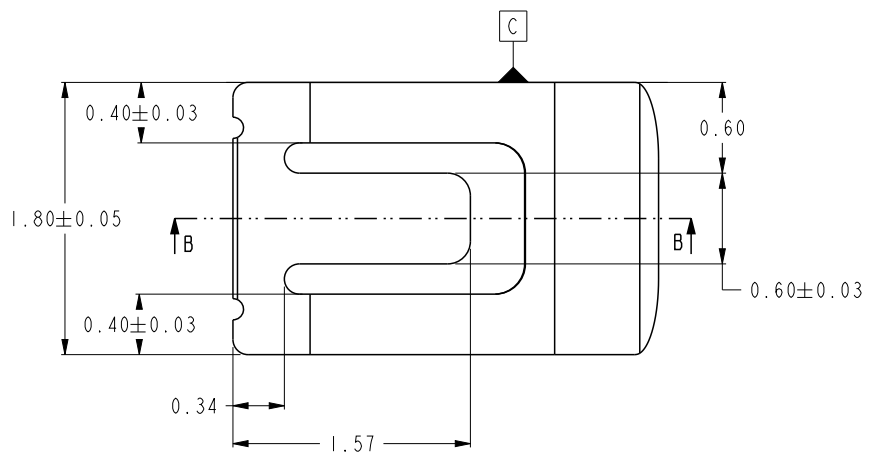


Copyright FCI.

FCI PART NO.	APPLE PART NO.
10129746-001RLF	806-01350



GRAIN DIRECTION



SECTION B-B

spec ref	*	dr	Eric Jiang	2014/04/11	projection	mm	size	A4	scale	20 : 1
tolerance std	TOLERANCES UNLESS OTHERWISE SPECIFIED	eng	Andy Lu	2014/11/25			ecn no	ELX-DG-19537-1		
ASME Y14.5		chr	-	-				rel level	Released	
surface		linear	0.X	±0.1		title UNIVERSAL CONTACT SPRING CLIP	dwg no 10129746	rev D		
			0.XX	±0.05						
			0.XXX	±						
ASME Y14.5		angular	0°	±1.5°	www.fci.com	cat. no.	Product - Customer Drw		sheet 1 of 2	

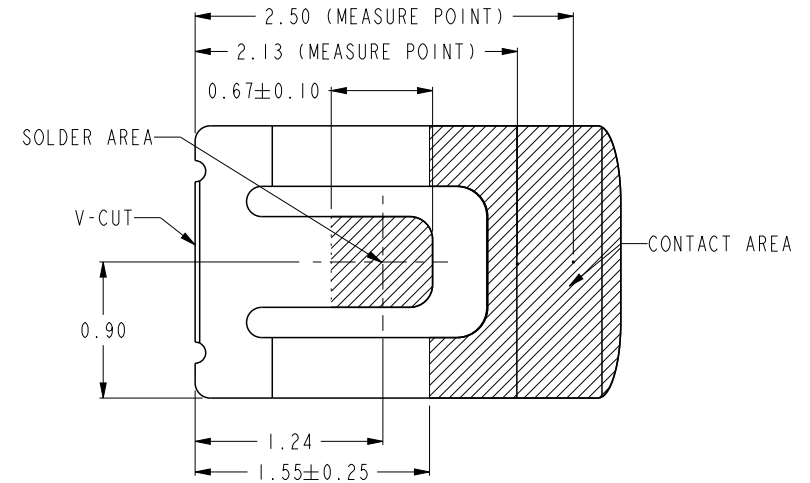
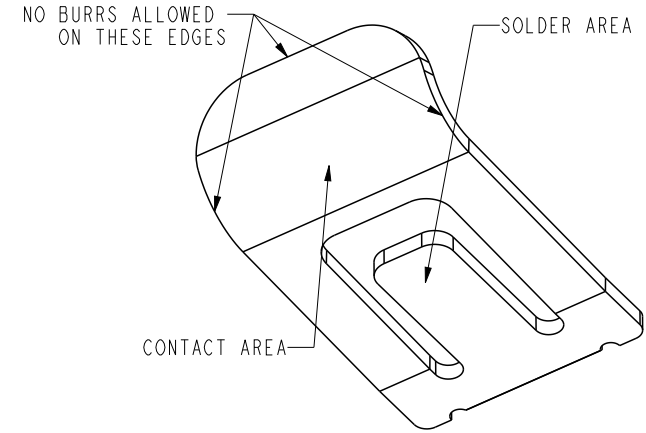
Pro/E File - REV C - 2009-06-09

FCI PART NO.	APPLE PART NO.
10129746-001RLF	806-01350

NOTES:

- MATERIAL: COPPER ALLOY, 0.120+/-0.010 THICK.
- CONTACT PLATING:
CONTACT AREA: PLATING 0.70um Au NOMINAL OVER 2um Ni UNDERPLATE,
SOLDER AREA : PLATING 0.05um Au NOMINAL, 0.15um MAX OVER 2um Ni UNDERPLATE.
- ALL SURFACES TO BE WITHIN A SURFACE PROFILE TOLERANCE OF 0.10mm.
- MAXIMUM BURR ALLOWANCE IS 0.02mm EXCEPT V-CUT AREA.
- PACKAGING SPECIFICATION: GS-14-1216;
- PRODUCT SPECIFICATION: GS-12-1236;
- CONTACT SURFACE ROUGHNESS MUST BE LESS THAN 1000NM SA,
- THE PRODUCTS WHERE THE PART NUMBER ENDS IN LF MET THE EUROPEAN UNION DIRECTIVE AND OTHER COUNTRY REGULATIONS AS DESCRIBED IN GS-12-008.
- PART NUMBER DESCRIPTION:
10129746-0 0 X X X

LF: LEAD FREE
 R: TAPE & REEL
 CONTACT PLATING:
 I: 0.70um Au OVER Ni



spec ref *		dr Eric Jiang		2014/04/11		projection		size A4		scale 20:1	
tolerance std		eng Andy Lu		2014/11/25				mm		ecn no ELX-DG-19537-1	
ASME Y14.5		chr -		-				rel level		Released	
TOLERANCES UNLESS OTHERWISE SPECIFIED		appr Pei-Ming Zheng		2014/11/26		product family -					
surface ✓	linear	0.X	±0.1		title UNIVERSAL CONTACT SPRING CLIP	dwg no 10129746	rev D				
		0.XX	±0.05								
0.XXX	±										
ASME Y14.5	angular	0°	±1.5°	www.fci.com	cat. no. 10104320	Product - Customer Drw		sheet 2 of 2			