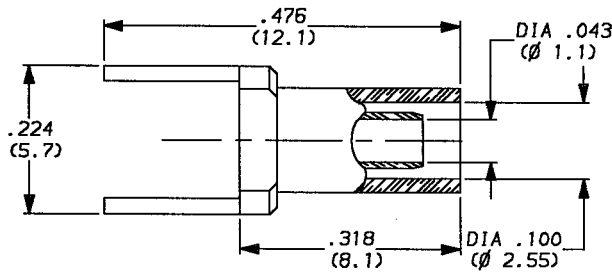
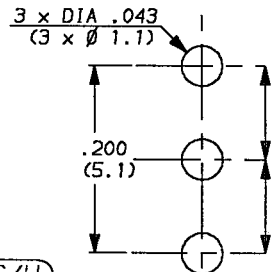


FEEDTHROUGH FOR P.C.B CRIMPING TYPE  
CABLE 2/50



MOUNTING HOLE



(---) DIMENSIONS IN MM

WEIGHT 0 oz (..... g)

Cable : RG 178/U , RG 196/U

CHARACTERISTICS

NOMINAL IMPEDANCE	50 $\Omega$	STANDARDISATION	-
FREQUENCY RANGE	0-3 GHz		-
TEMPERATURE RATING	-55 $\alpha$ +155 $^{\circ}$ C		-
VSWR	NA Max		-
RF INSERTION LOSS	NA dB Max	CABLE RETENTION	7.2 Lb Max 32 N Max
VOLTAGE RATING	750 Vrms	CENTER CONTACT RETENTION	
DIELECTRIC WITHSTANDING VOLTAGE	2000 Vrms	Axial force - mating end	0 Lb Max NA N Max
INSULATION RESISTANCE	NA M $\Omega$	Axial force - opposite end	0 Lb Max NA N Max
HERMETIC SEAL	NA cc/s cm <sup>3</sup> /s	Torque ( Max )	0 inch.oz NA cm.N
LEAKAGE (pressurized only)	0 psi NA kg/cm <sup>2</sup>	MATING TORQUE RECOMMENDED	0 inch.Lb NA cm.N
-	-	-	-
-	-	-	-

CONSTRUCTION

CONNECTOR PARTS	MATERIALS	FINISH
Body	Brass	Gold over nickel
Outer contact	-	-
Center contact	-	-
Insulators	-	-
Ferrule	Brass	Gold over nickel
-	-	-
-	-	-
-	-	-
-	-	-

ISSUE	REVISION No	DESCRIPTION	BY	DATE
.	.	.	.	.
.	.	.	.	.
.	.	.	.	.
.	.	.	.	.

Initiated on 03 11 88

The information given here is subject to change without notice. Design changes may be in order to improve the product.

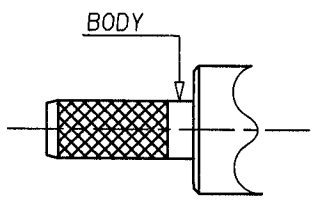
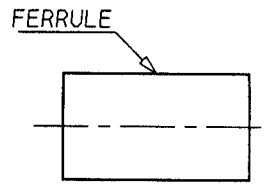


Superseded on ---

GMBH A. IWC

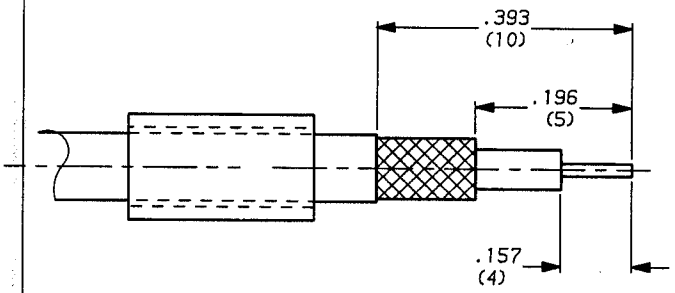
Panel cable receptacle, crimp-type  
- cable 2/50

SERIES: MCX

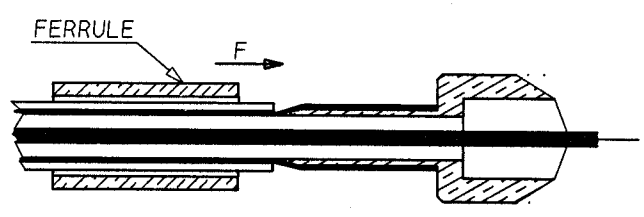


GMBH A INC

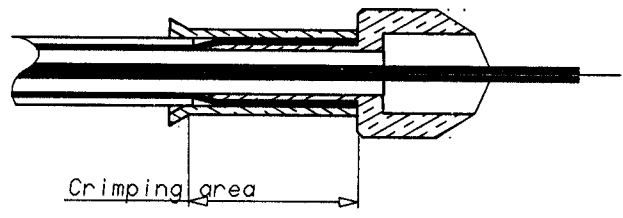
- 1-1 To slide ferrule on the cable
- 1-2 Cable stripping



- 2-1 To open the braid
- 2-2 To slide body under braid
- 2-3 To slide the ferrule on braid according to F direction



- 3-3 To crimp the ferrule
- crimping tool R 282 271
- Hex : .127 (3.25)



ISSUE	REVISION No	DESCRIPTION	BY	DATE
.	.	.	.	.
.	.	.	.	.
.	.	.	.	.

Initiated on 29 08 88

The information given here is subject to change without notice. Design changes may be in order to improve the product.



Superseded on -----