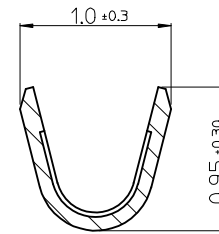
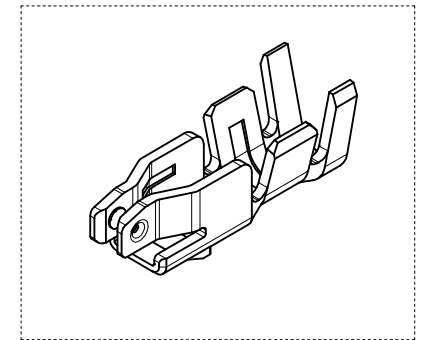


SECTION X-X

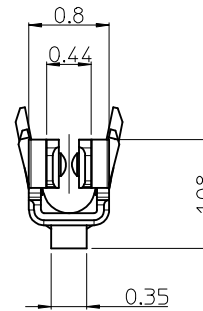
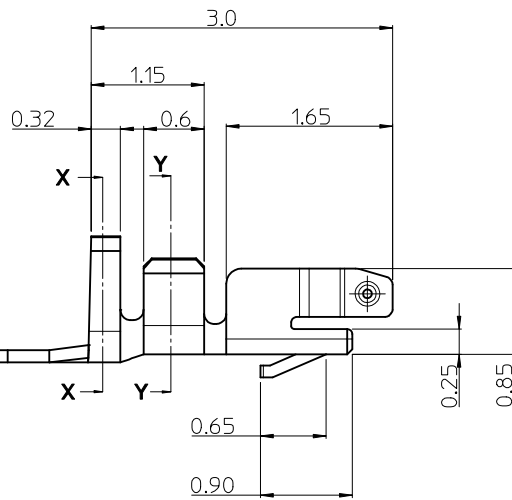


SECTION Y-Y



NOTES.

- ① 1. APPLICABLE HOUSING : 104128-0400/0500/0610/0620
104142-1000
- 2. MATERIAL : PHOSPHOR BRONZE, 0.12mm THICKNESS
PRE-TIN PLATED
0.8 μm MINIMUM, TIN (Sn) OVER
0.3 μm MINIMUM, COPPER
- 3. APPLICABLE WIRE RANGE : AWG#30~AWG#32
- 4. PACKAGING SPECIFICATION : PK-104539-001



ORDER NO 104539-8002

REVISED	EC NO: KOR2014-0105	2014/12/12
	DRWN: SCHONG03	2014/12/12
	CHKD: SHCHU	2014/12/12
	APPR: YSKI1M02	2014/12/24

REV	DESCRIPTION
▽=0	QUALITY SYMBOLS
⊕=0	

GENERAL TOLERANCES (UNLESS SPECIFIED)	
	mm INCH
4 PLACES	± --- ± ---
3 PLACES	± --- ± ---
2 PLACES	± 0.15 ± ---
1 PLACE	± 0.2 ± ---
ANGULAR ± ---°	
DRAFT WHERE APPLICABLE MUST REMAIN WITHIN DIMENSIONS	

DIMENSION STYLE	
MM ONLY	
DRAWN BY	DATE
JHPARK01	2011/07/25
CHECKED BY	DATE
SH. CHU	2011/07/25
APPROVED BY	DATE
YUNSIKKIM	2011/09/21
MATERIAL NO.	
1045398002	

SCALE	DESIGN UNITS	THIRD ANGLE PROJECTION
20:1	METRIC	⊕ □
TITLE		
1.0/1.25MM WTB CONN. RECEPTACLE TERMINAL		
MOLEX INCORPORATED		
DOCUMENT NO.	SHEET NO.	
SD-104539-001	1 OF 1	
THIS DRAWING CONTAINS INFORMATION THAT IS PROPRIETARY TO MOLEX INCORPORATED AND SHOULD NOT BE USED WITHOUT WRITTEN PERMISSION		