

## XLM-10.4-M5

### Industrial LCD Monitors (Touch Optional)

Since 1994 EarthLCD has supplied LCD monitor solutions for industrial machines, CRT replacement, point-of-sale and medical equipment. Available interfaces include NTSC, HDMI and VGA. Touchscreens are available in resistive and capacitive touch interfaces. By using our open frame, our LCD expertise has been honed to help customers meet their specific needs.

Earth Computer Technologies, Inc is a maker of industrial LCDs and embedded products including the award-winning ezLCD technology from EarthLCD, the recognized leader in smart touch LCDs.



## 10.4" Industrial LCD Monitor

**Commercial and industrial applications include:** ATM machines, industrial equipment, instrumentation, kiosks, military, medical, arcade games, marine, security, test equipment, gaming, or any application requiring a color LCD display.

#### Features:

- 10.4" SVGA LCD panel with LED backlight
- HDMI, VGA and NTSC/PAL video inputs
- Commercial and Industrial applications
- -20°C ~ +70°C operating temperature range
- 20,000 hours LED life typical
- OSD Controls: contrast, phase, clock, color, H&V position, auto-tune, recall
- VESA and Wall Mount Options
- Panavise Mounting Arm included
- +12 volt power supply included

#### Options (sold separately):

- USB four wire resistive touchscreen
- HDMI or VGA Cable

#### Product Specifications:

**Screen Size (Diagonal): 10.4"**  
**Display Technology: TFT**  
**Resolution: 800 x 600 (SVGA)**  
**Brightness: 400 Nits**  
**Interface Input Modes: VGA**  
**Colors: 262,144**  
**Active Area (mm): 211.2 x 158.4**  
**Contrast Ratio: 500:1**  
**Horizontal Viewing Angle: 65° L/R**  
**Vertical Viewing Angle: 45° U / 65° D**  
**Operating Temperature: -20°C to 70°C**  
**Storage Temperature: -30°C to 80°C**  
**Input Voltage: +12V DC**  
**Power Consumption: 400 mA**  
**Display Backlight: LED**  
**RoHS Compliant: Yes**  
**Outline Dimensions (mm): 204.47 x 273.30**  
**Outline Dimensions (in): 8.05 x 10.76**  
**Cable Sold Separately**  
**Touch Screen Version Available: Yes**

**Non-Touch: XLM-8.0-M5**  
**Resistive Touch: XLM-8.0-M5-RT-USB**

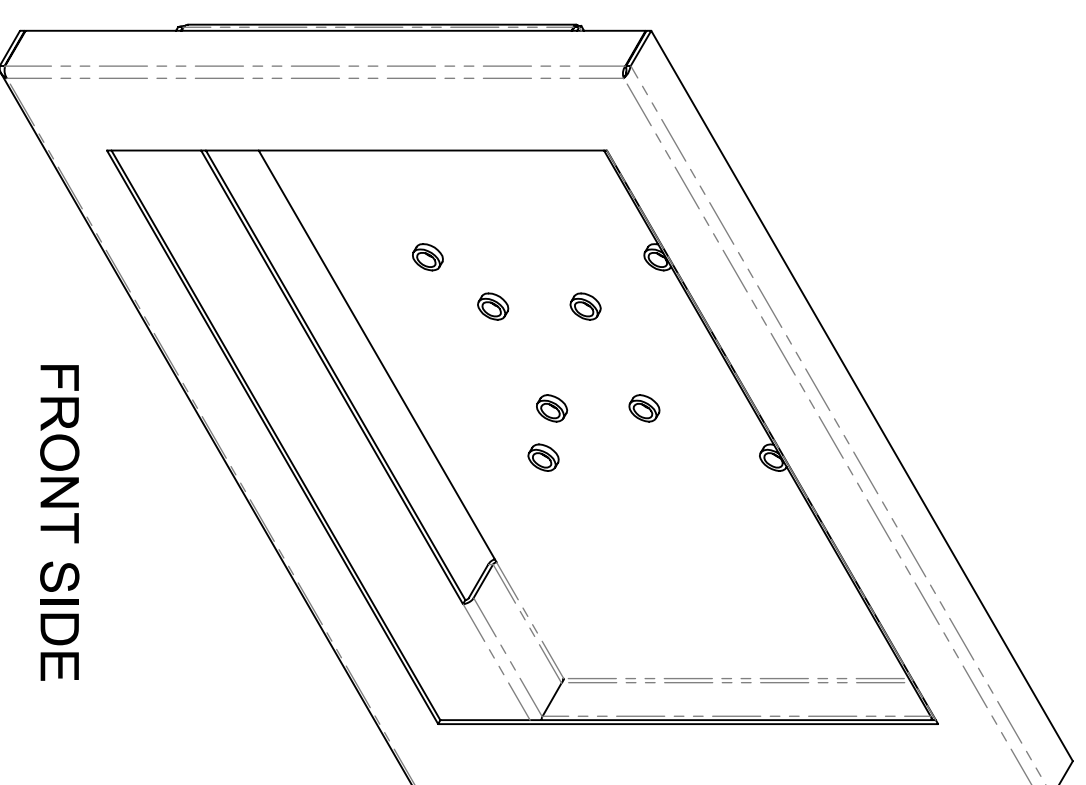
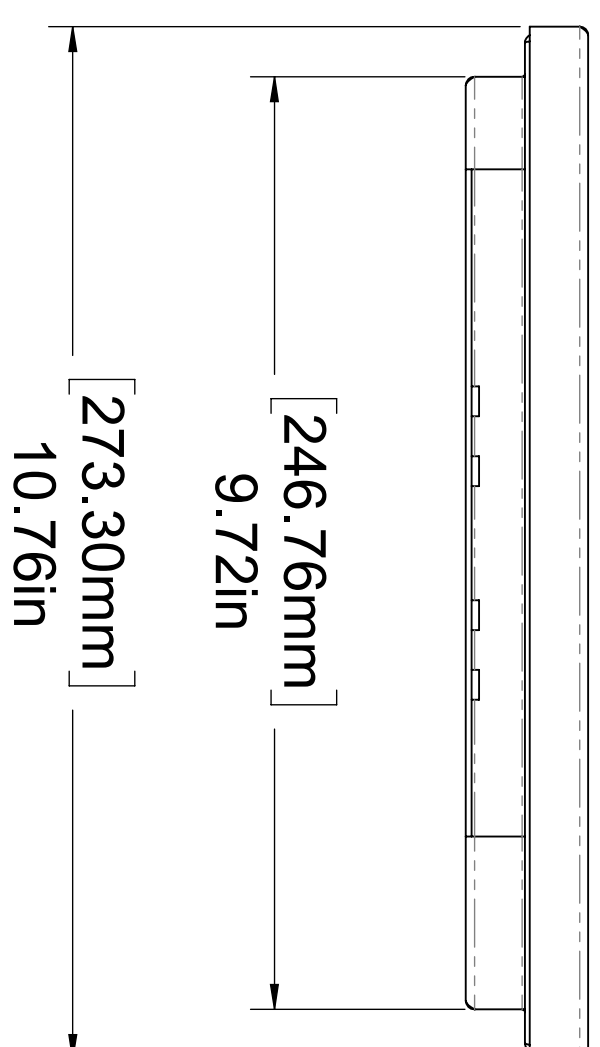
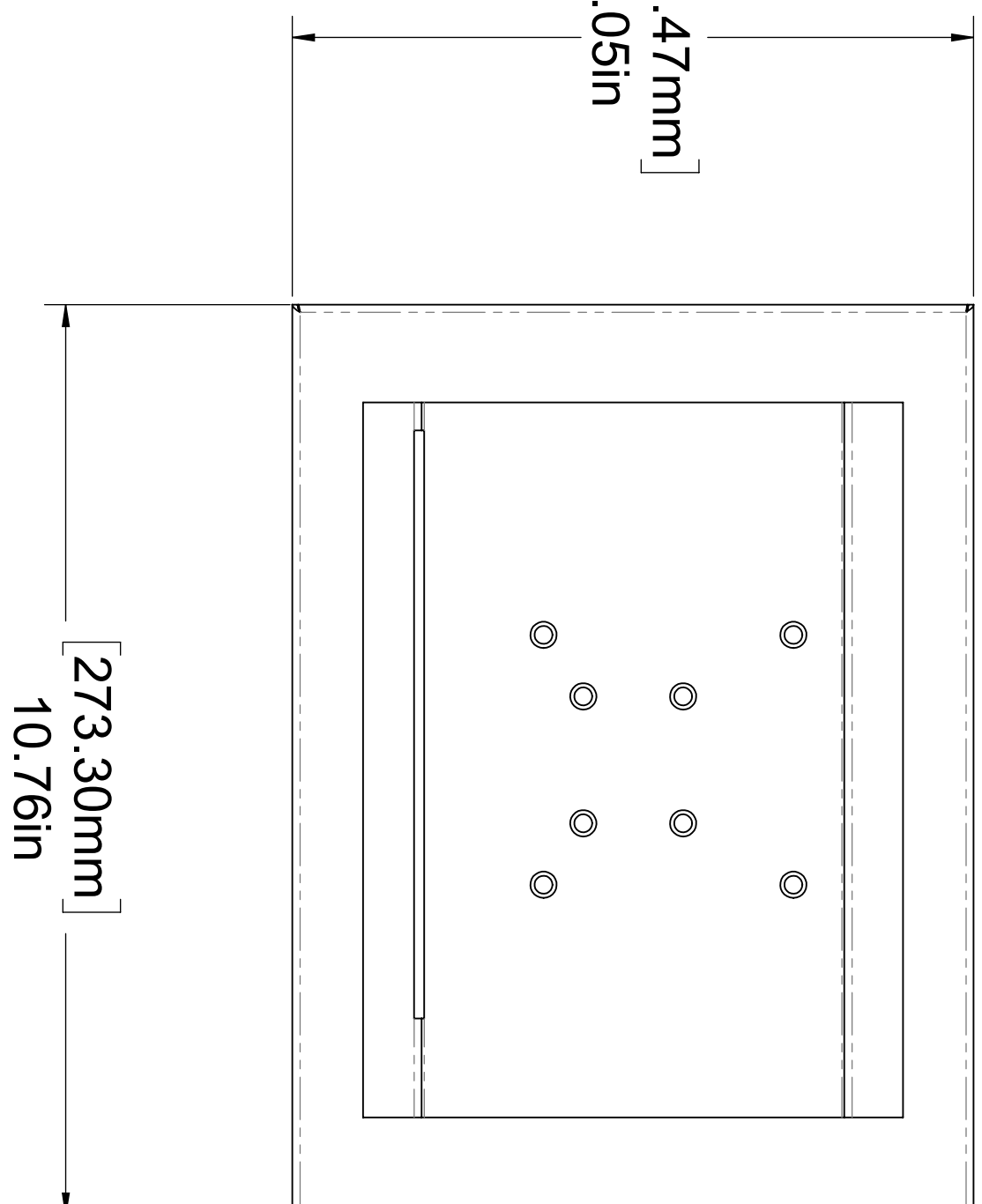
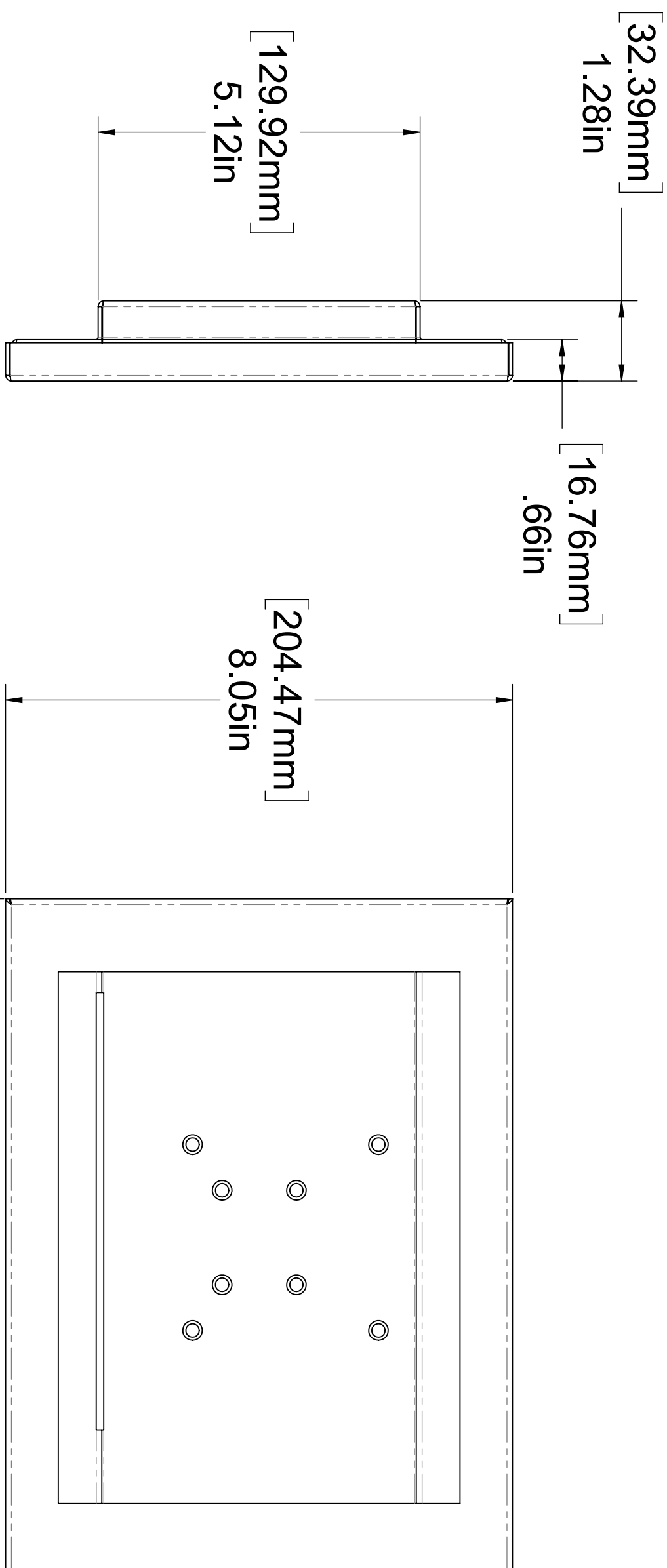
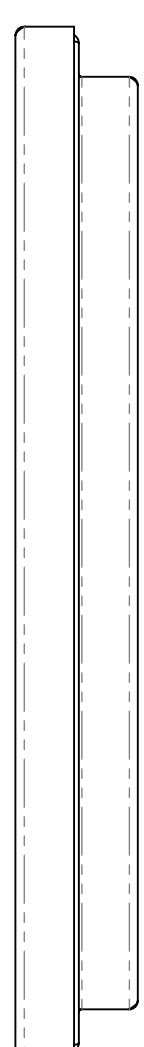


GENERAL NOTES:

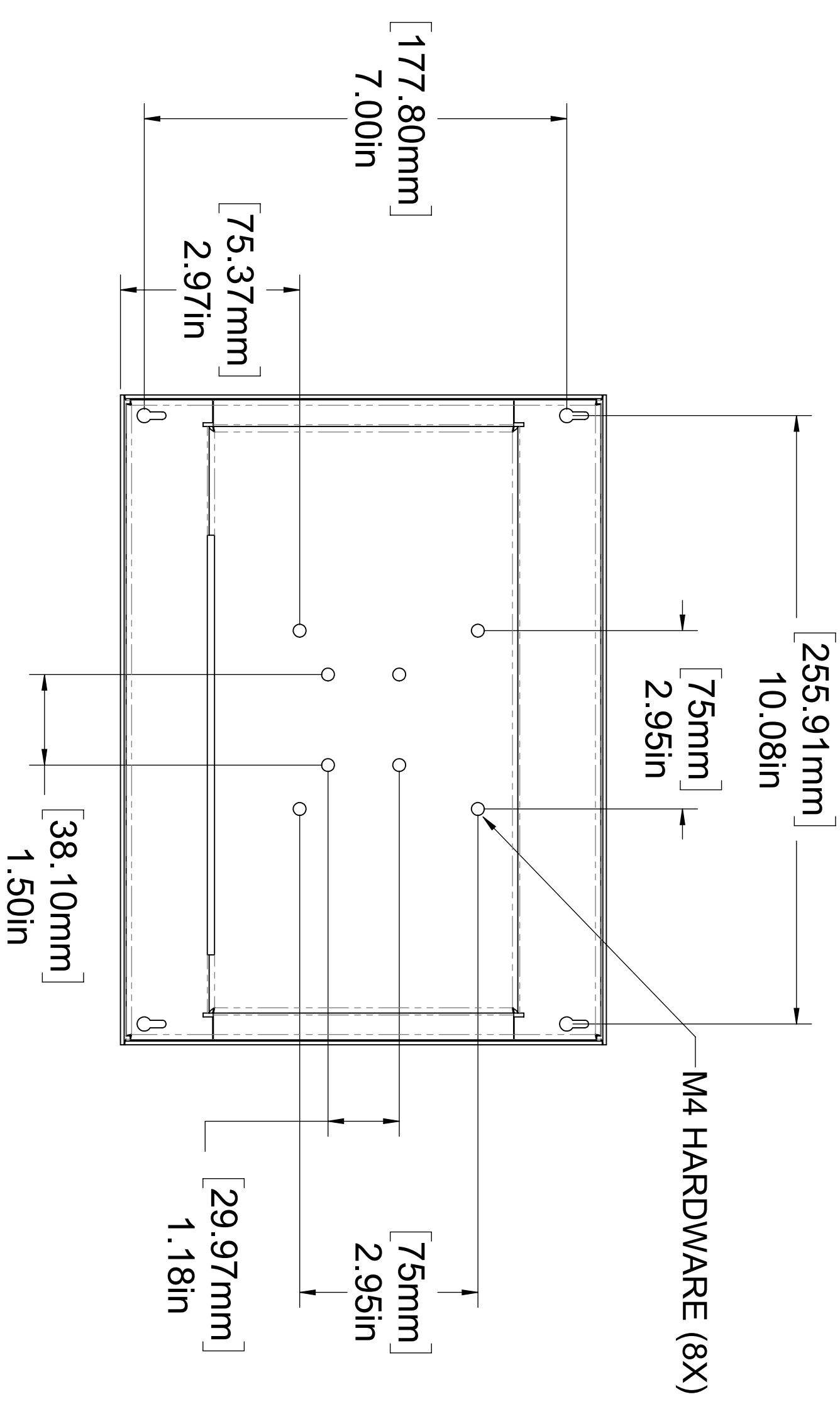
/1/ REFERENCE DATASHEET.

REVISIONS

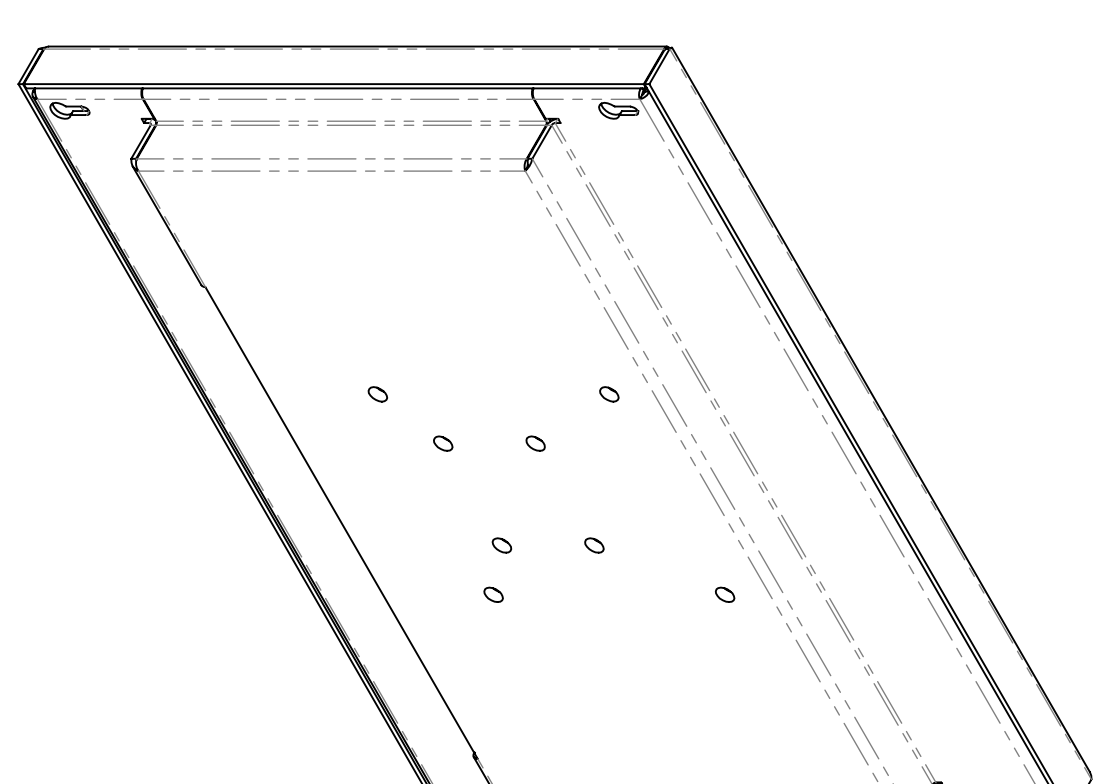
ZONE	REV.	DESCRIPTION	DATE	APPROVED
	X1	XMLM-10.4-M5	2020-06-24	



FRONT SIDE



M4 HARDWARE (8X)



BACK SIDE

THIRD ANGLE PROJECTION

THE INFORMATION CONTAINED IN THIS DRAWING IS THE SOLE PROPERTY OF PARTRON, A DIVISION OF DARTMOUTH. IT IS TO BE USED ONLY FOR THE PROJECT AND SITE SPECIFICALLY IDENTIFIED HEREIN. NO OTHER USE IS PERMITTED WITHOUT THE WRITTEN PERMISSION OF DARTMOUTH.

NO.	DESCRIPTION	DATE	BY	CHKD	APPV
1	ISSUED FOR MANUFACTURE	2020-06-24	ZJO		
2	DESIGNED BY				
3	CHECKED BY				
4	DESIGNED BY				
5	CHECKED BY				
6	DESIGNED BY				
7	CHECKED BY				
8	DESIGNED BY				
9	CHECKED BY				
10	DESIGNED BY				
11	CHECKED BY				
12	DESIGNED BY				
13	CHECKED BY				
14	DESIGNED BY				
15	CHECKED BY				
16	DESIGNED BY				
17	CHECKED BY				
18	DESIGNED BY				
19	CHECKED BY				
20	DESIGNED BY				
21	CHECKED BY				
22	DESIGNED BY				
23	CHECKED BY				
24	DESIGNED BY				
25	CHECKED BY				
26	DESIGNED BY				
27	CHECKED BY				
28	DESIGNED BY				
29	CHECKED BY				
30	DESIGNED BY				
31	CHECKED BY				
32	DESIGNED BY				
33	CHECKED BY				
34	DESIGNED BY				
35	CHECKED BY				
36	DESIGNED BY				
37	CHECKED BY				
38	DESIGNED BY				
39	CHECKED BY				
40	DESIGNED BY				
41	CHECKED BY				
42	DESIGNED BY				
43	CHECKED BY				
44	DESIGNED BY				
45	CHECKED BY				
46	DESIGNED BY				
47	CHECKED BY				
48	DESIGNED BY				
49	CHECKED BY				
50	DESIGNED BY				
51	CHECKED BY				
52	DESIGNED BY				
53	CHECKED BY				
54	DESIGNED BY				
55	CHECKED BY				
56	DESIGNED BY				
57	CHECKED BY				
58	DESIGNED BY				
59	CHECKED BY				
60	DESIGNED BY				
61	CHECKED BY				
62	DESIGNED BY				
63	CHECKED BY				
64	DESIGNED BY				
65	CHECKED BY				
66	DESIGNED BY				
67	CHECKED BY				
68	DESIGNED BY				
69	CHECKED BY				
70	DESIGNED BY				
71	CHECKED BY				
72	DESIGNED BY				
73	CHECKED BY				
74	DESIGNED BY				
75	CHECKED BY				
76	DESIGNED BY				
77	CHECKED BY				
78	DESIGNED BY				
79	CHECKED BY				
80	DESIGNED BY				
81	CHECKED BY				
82	DESIGNED BY				
83	CHECKED BY				
84	DESIGNED BY				
85	CHECKED BY				
86	DESIGNED BY				
87	CHECKED BY				
88	DESIGNED BY				
89	CHECKED BY				
90	DESIGNED BY				
91	CHECKED BY				
92	DESIGNED BY				
93	CHECKED BY				
94	DESIGNED BY				
95	CHECKED BY				
96	DESIGNED BY				
97	CHECKED BY				
98	DESIGNED BY				
99	CHECKED BY				
100	DESIGNED BY				

EarthLCD

XMLM-10.4-M5

XMLM\_10.4\_M5\_ASY\_X1

SCALE: 1:2 WEIGHT: SHEET 1 OF 1