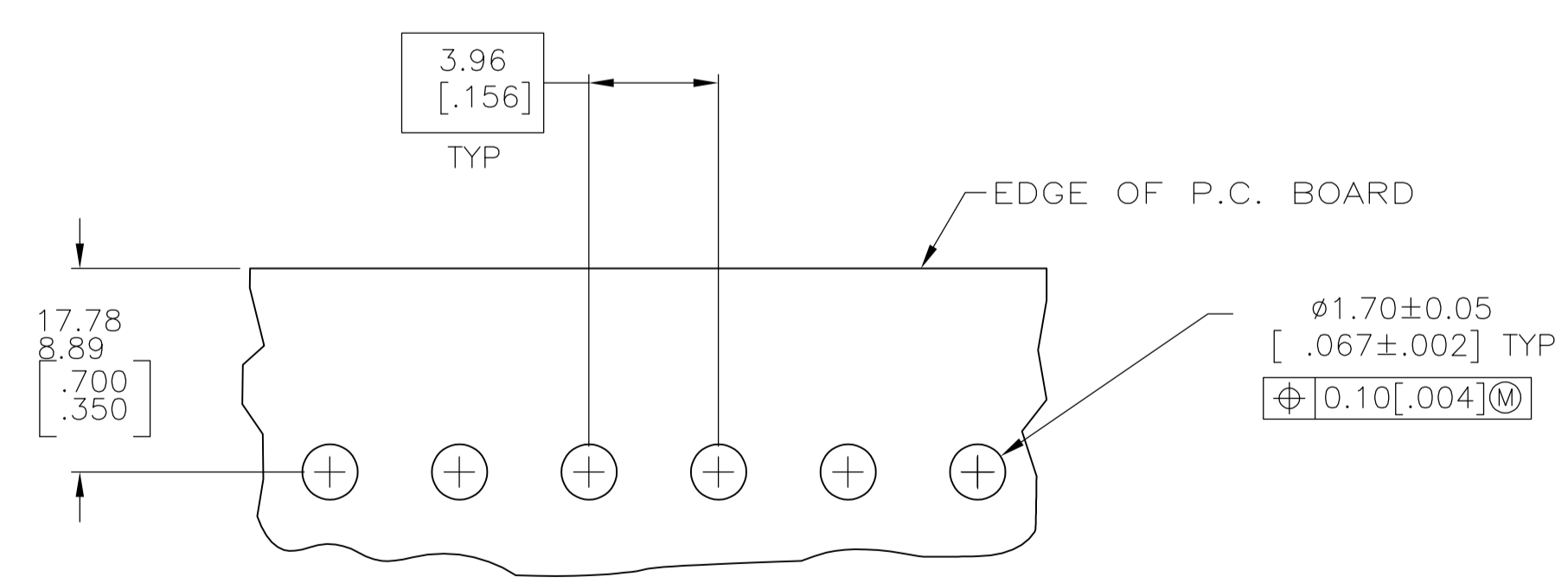
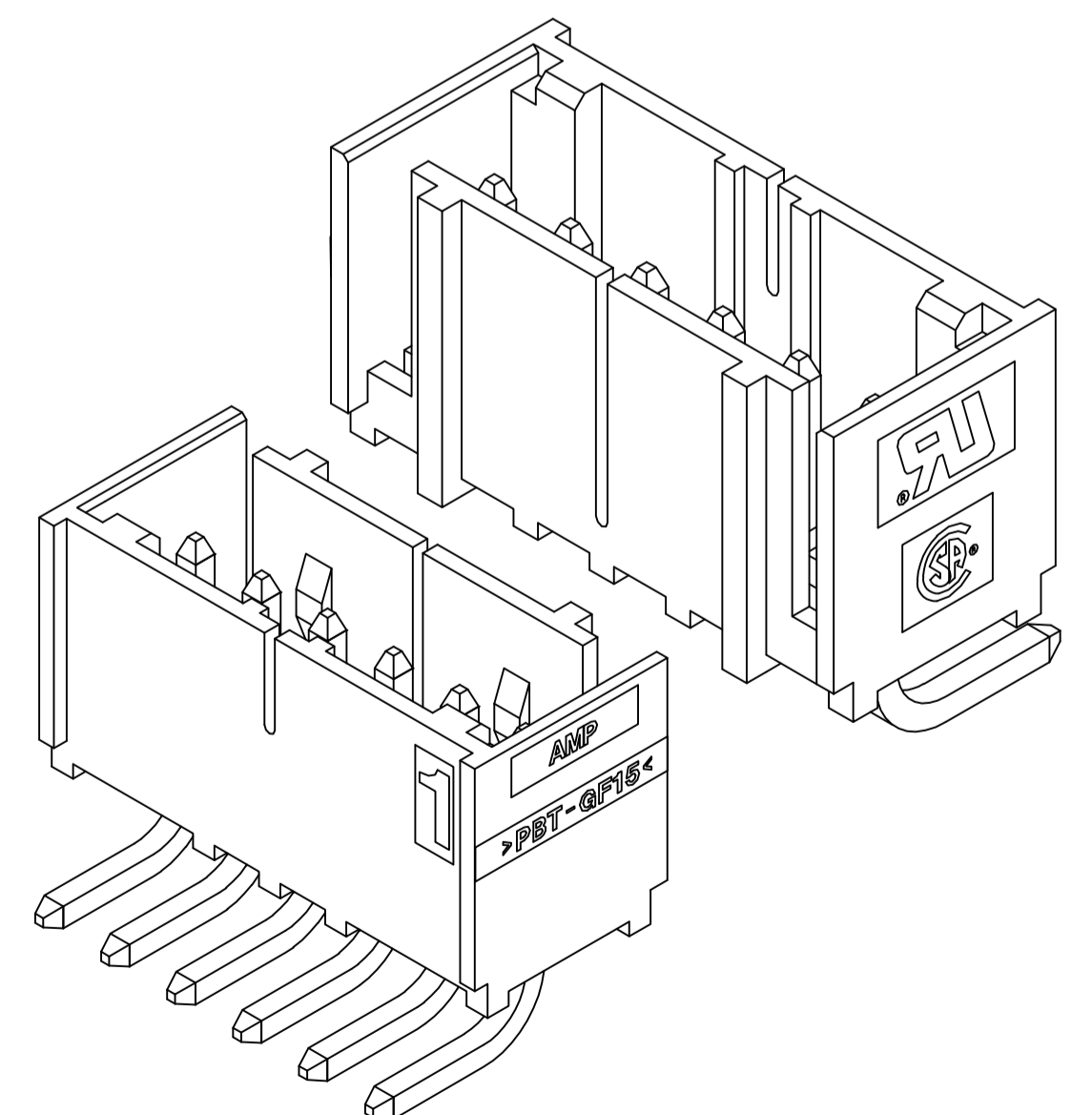
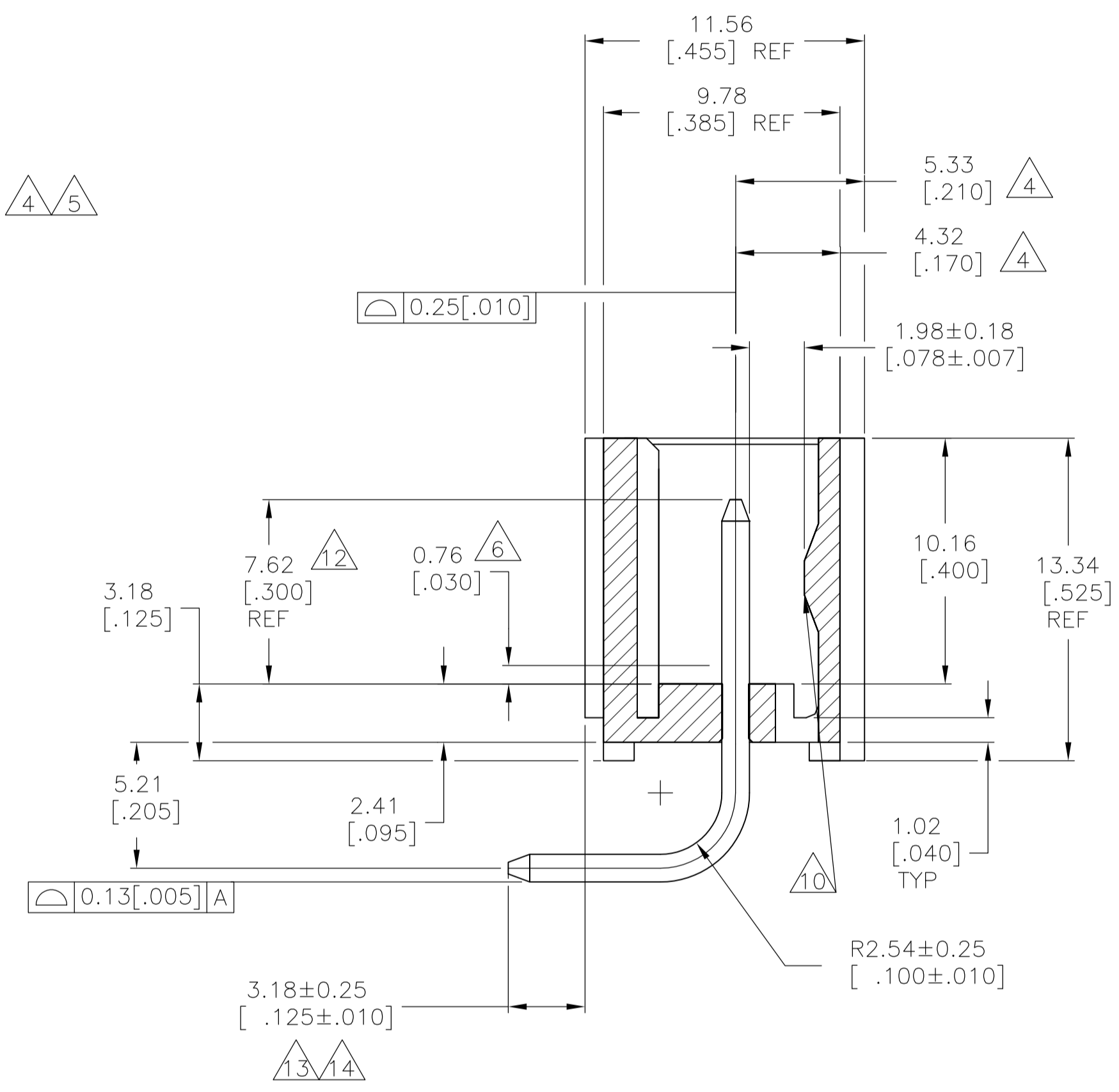
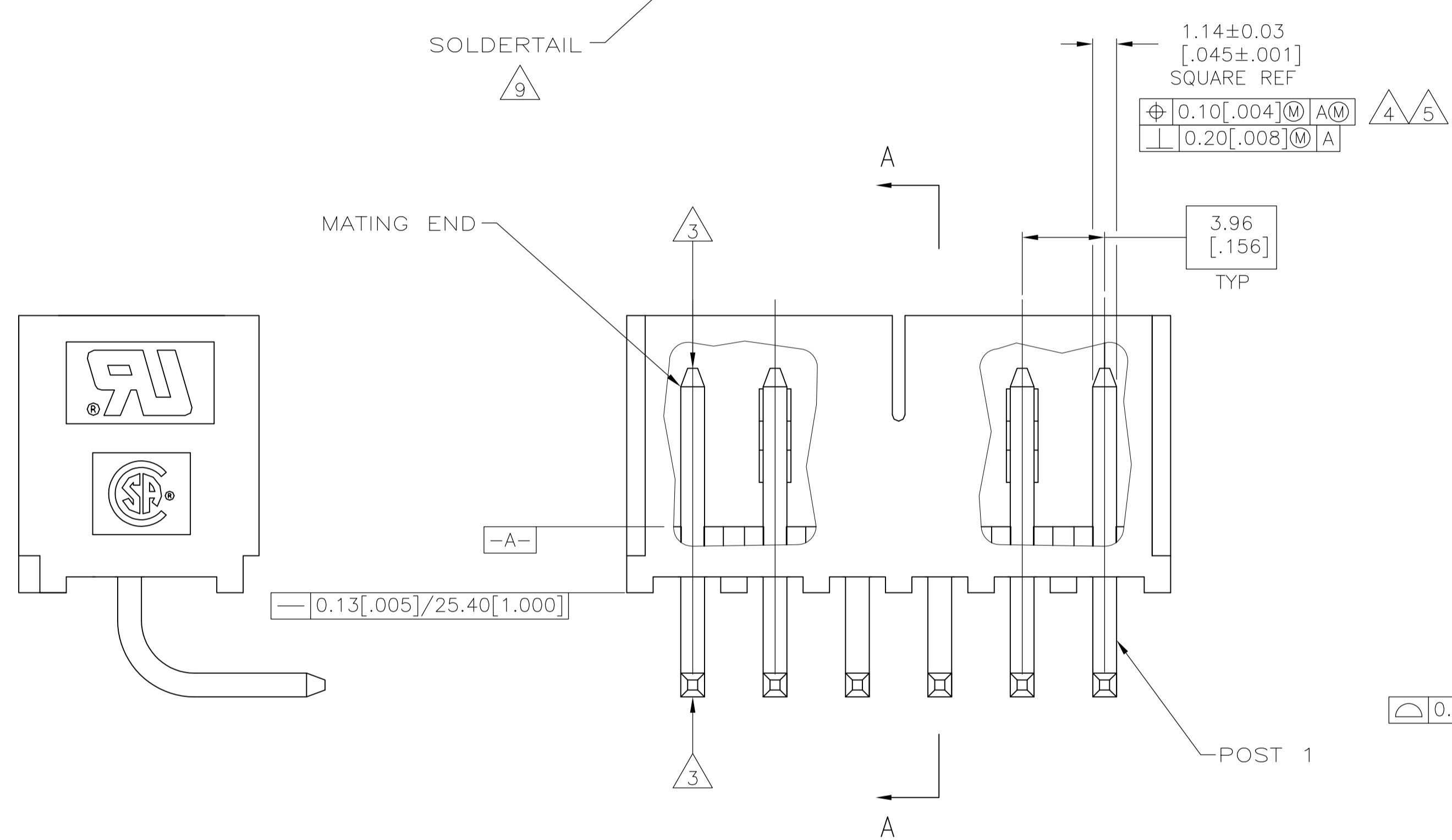
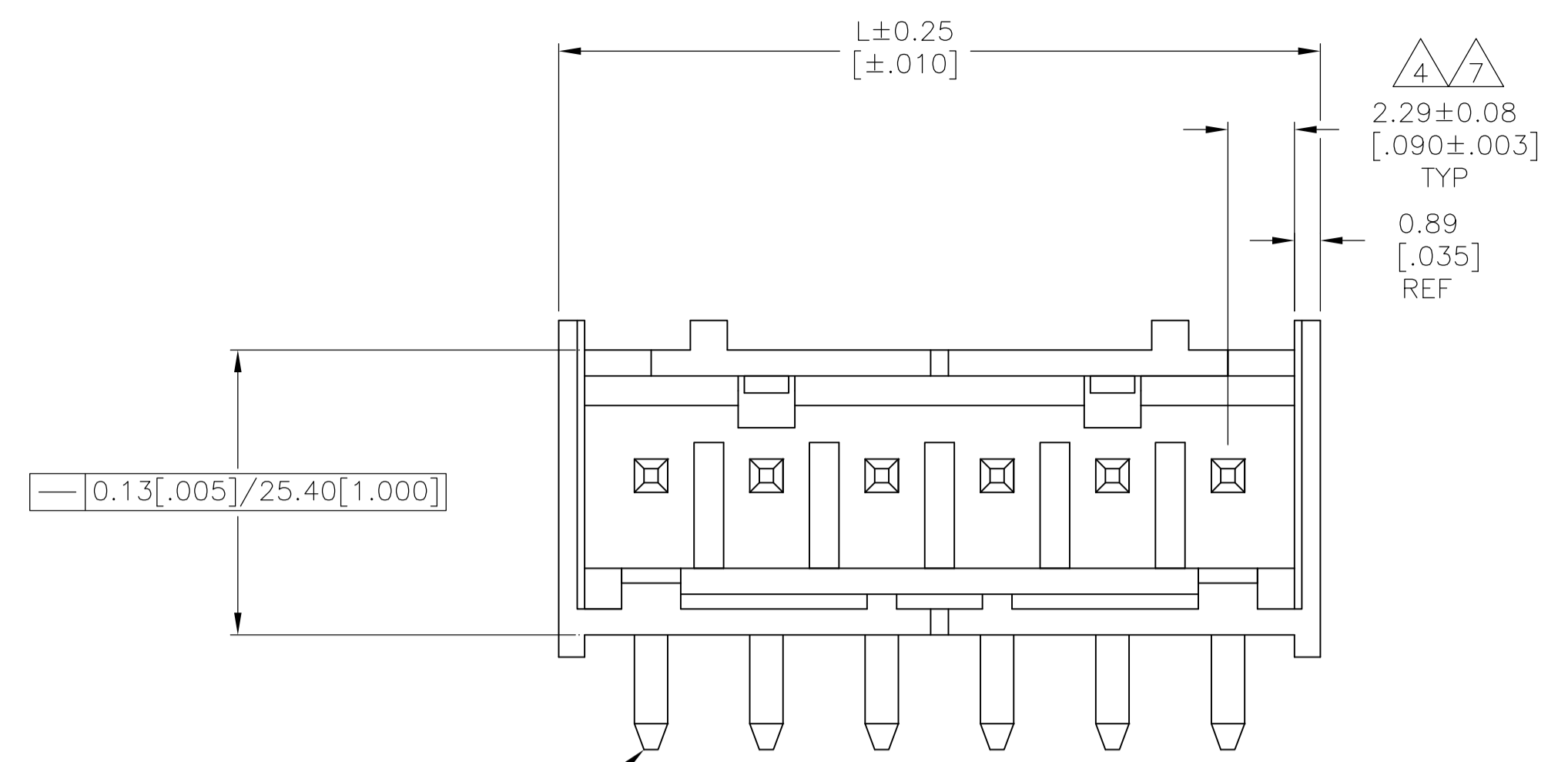


LOC		DIST		REVISIONS			
P	LTR	DATE	DMN	APVD			
E	REVISED PER ECO-11-014391	19OCT11	KH	SM			



- MATERIAL:
HOUSING - THERMOPLASTIC POLYESTER, GLASS FILLED, UL94-0.
POST - COPPER ALLOY
- FINISH:
HOUSING - BLACK
POST - SEE NOTES 12, 13 AND 14 FOR PLATING.

- (3) POST TO WITHSTAND 3LBS (16N) MIN AXIAL FORCE IN THIS DIRECTION WITHOUT DISLODGING.
- (4) APPLIES AT -A-.
- (5) APPLIES WHEN HEADER IS STRAIGHT.
- (6) PLASTIC PROJECTIONS PERMITTED IN THIS ZONE.
- (7) COORDINATE DIMENSIONS APPLIES FROM CENTER OF ACTUAL FEATURE.
- (8) SOLDER SIDE OF BOARD IS SHOWN.
- (9) POST SOLDERTAIL MUST COMPLY WITH AMP SOLDERABILITY SPEC 109-11-2.
- (10) LATCH DETENT FEATURE APPEARS 1 PLACE ON EACH END OF PART (MAX OF 2 PER PART) ON ALL POSITIONS 4 THRU 12. THE LATCH APPEARS ONLY ONE PLACE ON 2 & 3 POSITION PARTS.
- 11. DIMENSIONS IN BRACKETS ARE IN INCHES.
- (12) PLATING: GOLD PLATE AREA, 0.00038 [.000015] GOLD OR 0.00008 [.000003] MIN GOLD FLASH OVER 0.00030 [.000012] PALLADIUM NICKEL, PER TE CONNECTIVITY'S DISCRETION, ALL SIDES, OVER NICKEL UNDERPLATE, 0.00127 [.000050] MIN, ALL SIDES AND ENTIRE LENGTH OF POST.
- (13) BRIGHT TIN LEAD (93/7) PLATE AREA 0.00381 - 0.0089 [.000150 - .000350] ALL FOUR SIDES, 3.18 [.125] MIN..
- (14) MATTE TIN PLATE AREA 0.00381 - 0.0089 [.000150 - .000350] ALL FOUR SIDES, 3.18 [.125] MIN..
- (15) OBSOLETE PARTS: OBSOLETE CIS STREAMLINING PER D.RENAUD/D.SINISI

PLATING	MM	IN	NO. OF POSN	PART NUMBER	
					L
647141-6 SHOWN	49.94	1.966	12	3-647141-2	
	45.97	1.810	11	3-647141-1	
	42.01	1.654	10	3-647141-0	
	38.05	1.498	9	2-647141-9	
	34.09	1.342	8	2-647141-8	
	30.12	1.186	7	2-647141-7	
	26.16	1.030	6	2-647141-6	
	22.20	.874	5	2-647141-5	
	18.24	.718	4	2-647141-4	
	14.27	.562	3	2-647141-3	
	10.31	.406	2	2-647141-2	
	(12, 14)	49.94	1.966	12	1-647141-2
	(12, 14)	45.97	1.810	11	1-647141-1
	(12, 14)	42.01	1.654	10	1-647141-0
	(12, 14)	38.05	1.498	9	-647141-9
(12, 14)	34.09	1.342	8	-647141-8	
(12, 14)	30.12	1.186	7	-647141-7	
(12, 14)	26.16	1.030	6	-647141-6	
(12, 14)	22.20	.874	5	-647141-5	
(12, 14)	18.24	.718	4	-647141-4	
(12, 14)	14.27	.562	3	-647141-3	
(12, 14)	10.31	.406	2	647141-2	

THIS DRAWING IS A CONTROLLED DOCUMENT.

DIMENSIONS: mm [INCHES]	TOLERANCES UNLESS OTHERWISE SPECIFIED:	DIN B LEWIS 16JUN98	APVD R SWING 16JUN98	NAME D. CLARK 16JUN98
0 PLC ± -	1 PLC ± -	2 PLC ± -	3 PLC ± .005	4 PLC ± -
ANGLES ± -	MATERIAL - FINISH -			

STE TE Connectivity
 MTA-156 SHROUDED HEADER ASSEMBLY, RIGHT ANGLE FRONT BEND .045 SQUARE POST, .000015 GOLD, W/O RETENTION PEG

SIZE: A1 CAGE CODE: 00779 DRAWING NO: 647141
 WEIGHT: - RESTRICTED TO: -
 CUSTOMER DRAWING SCALE: 5:1 SHEET: 1 OF 1 REV: E

