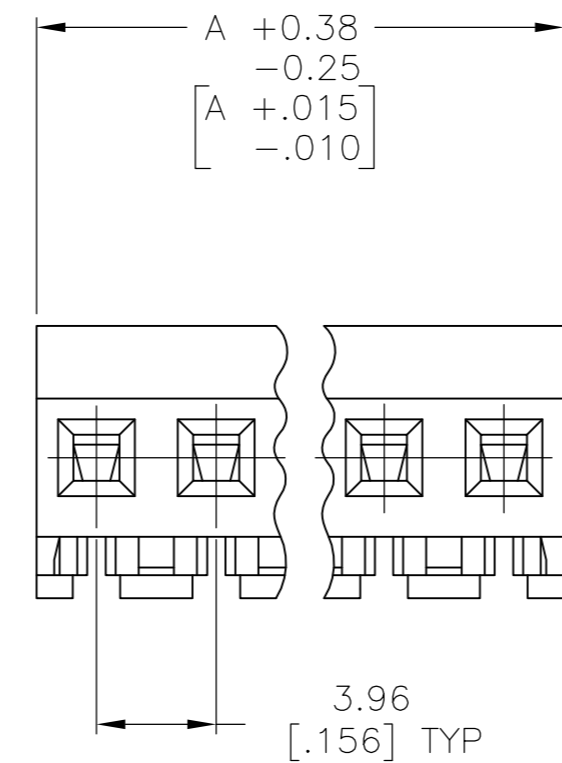
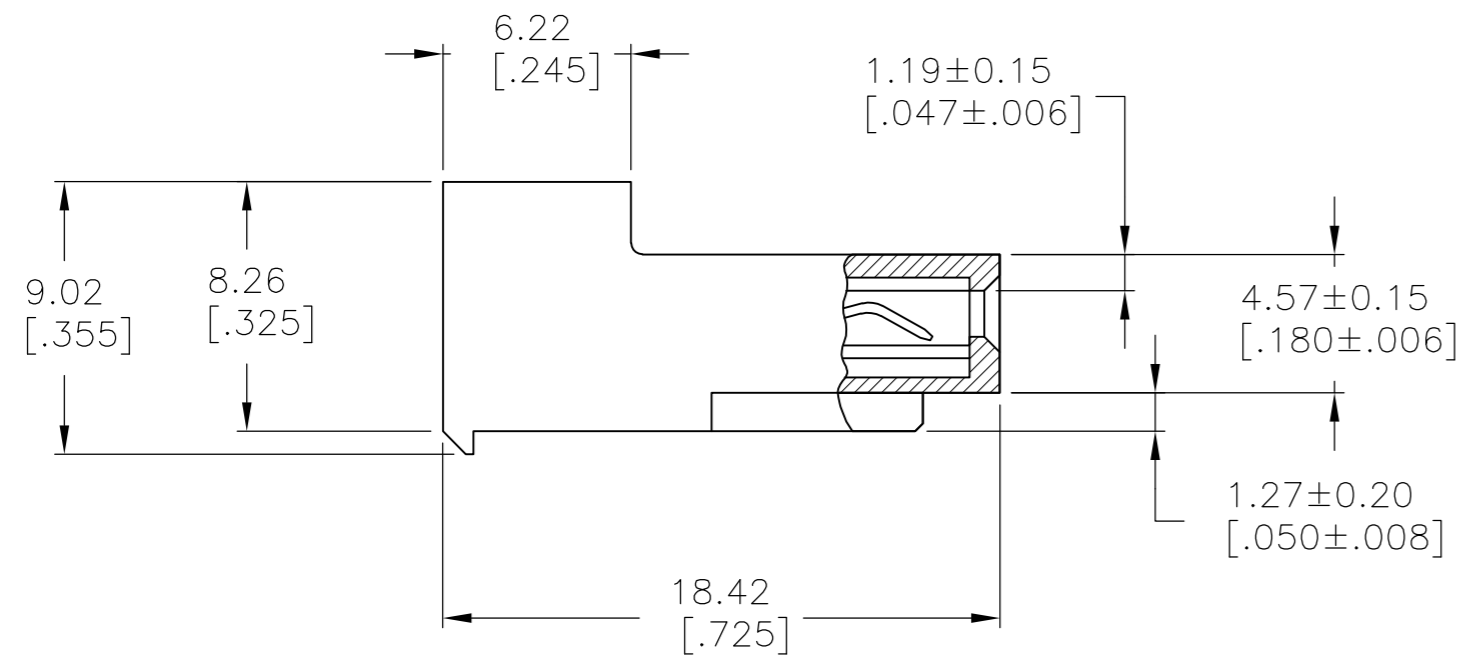
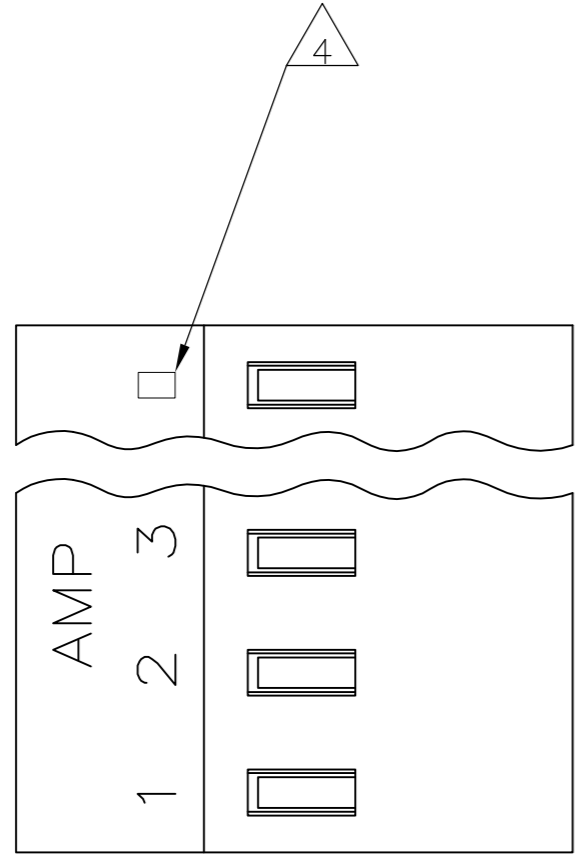


THIS DRAWING IS UNPUBLISHED. RELEASED FOR PUBLICATION  
 © COPYRIGHT - By - ALL RIGHTS RESERVED.

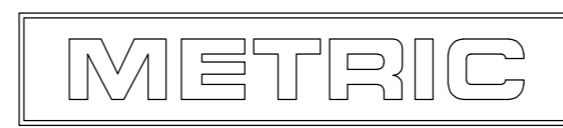
LOC		DIST		REVISIONS			
P	LTR	DESCRIPTION		DATE	DWN	APVD	
CM	54	D2		REVISED PER ECO-11-014117	13JUL11	HMR SM	



- 1 MATERIAL: CONNECTOR - NYLON UL94V-0 (BLACK).  
 CONTACTS - 0.30[.012] THICK COPPER ALLOY  
 (BRIGHT-TIN LEAD 0.00203  
 [.000080] MIN THK FOR CONTACTS  
 644502-2 THRU 1-644502-2, MATTE  
 WHISKER MITIGATED TIN 0.00203 [.000080]  
 MIN THICKNESS FOR CONTACTS  
 3-644502-2 THRU 4-644502-2)
- 2. CONTACTS ACCEPT 18 AWG WIRE WITH 2.41[.095] MAX  
 INSULATION DIAMETER.
- 3. CONTACTS MUST ACCEPT 1.14±0.03[.045±.001] SQUARE  
 POST AND REMAIN LOCKED IN POSITION.
- 4 IDENTIFICATION NUMBER FOR LAST CIRCUIT MAY  
 NOT APPEAR ON ALL ASSEMBLIES.
- 5. DIMENSIONS IN BRACKETS ARE IN INCHES.
- 6. HOUSING FEATURES ARE: CLOSED END WITHOUT  
 LOCKING RAMP.
- 7 OBSOLETE PARTS: OBSOLETE CIS STREAMLINING PER D.RENAUD/D.SINISI

DIM A	NO. OF CIRCUITS	PART NO.
47.55 [1.872]	12	4-644502-2
43.59 [1.716]	11	4-644502-1
39.62 [1.560]	10	4-644502-0
35.66 [1.404]	9	3-644502-9
31.70 [1.248]	8	3-644502-8
27.74 [1.092]	7	3-644502-7
23.77 [.936]	6	3-644502-6
19.81 [.780]	5	3-644502-5
15.85 [.624]	4	3-644502-4
11.89 [.468]	3	3-644502-3
7.92 [.312]	2	3-644502-2
47.55 [1.872]	12	1-644502-2
43.59 [1.716]	11	1-644502-1
39.62 [1.560]	10	1-644502-0
35.66 [1.404]	9	644502-9
31.70 [1.248]	8	644502-8
27.74 [1.092]	7	644502-7
23.77 [.936]	6	644502-6
19.81 [.780]	5	644502-5
15.85 [.624]	4	644502-4
11.89 [.468]	3	644502-3
7.92 [.312]	2	644502-2

7 SUPERSEDED  
 OBSOLETE  
 7 SUPERSEDED



THIS DRAWING IS A CONTROLLED DOCUMENT.

DWN B. LEWIS 12FEB91		TE Connectivity	
CHK R. SWING 12FEB91		NAME	
APVD D. CLARK 20FEB91		MTA 156 CONNECTOR ASSEMBLY, 18 AWG,UL94V-0, SPECIAL	
PRODUCT SPEC 108-1051		-	
APPLICATION SPEC 114-1020	SIZE A2	CAGE CODE 00779	DRAWING NO C-644502
MATERIAL 1	WEIGHT -	SCALE 4:1	SHEET 1 OF 1
FINISH 1	CUSTOMER DRAWING	RESTRICTED TO -	REV D2