

Grove - RS232

SKU 103020192

Most of the MCUs use TTL levels, and the computer serial port generally uses 232 levels. If we want the computer to communicate with the MCU, we need this **Grove - 232**. Communication between your Arduino and your computer will be exceptionally convenient with the integrated Grove interface

This module is based on Max3232, it supports multiple baud rate communication and theoretically supports communication up to 230400bps baud.

Note

We've Released the [Grove Selection Guide](#) and hope to help you find the Grove suit you best.

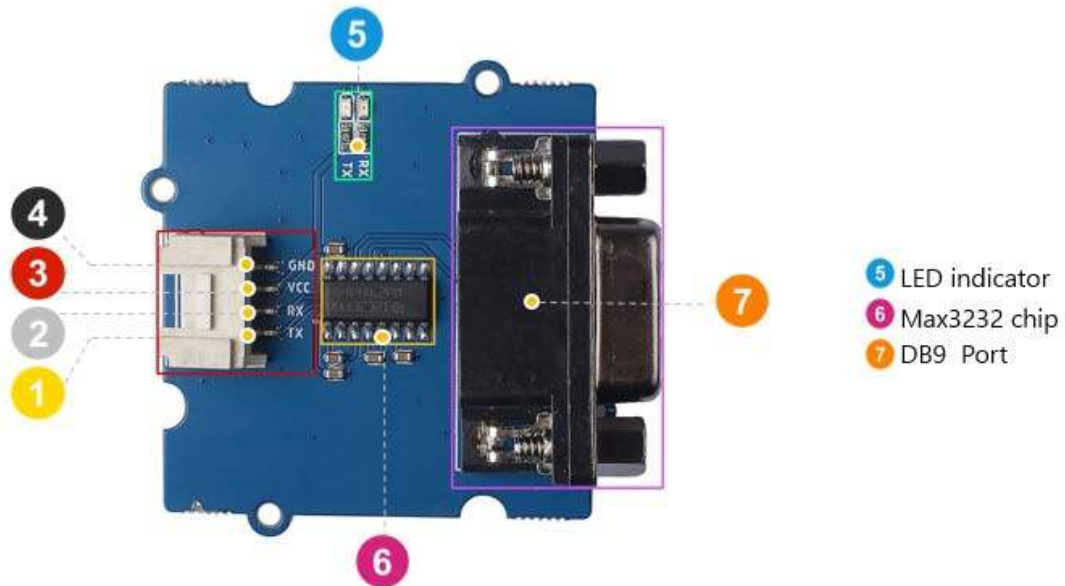
Feature

- Easy to use
- Stable, high speed
- High cost performance
- ± 15 -kV ESD Protection
- Low power consumption
- Two Drivers and Two Receivers
- Female DB9 Header

Typical Applications

- Hand-Held Equipment
- Palmtop PCs

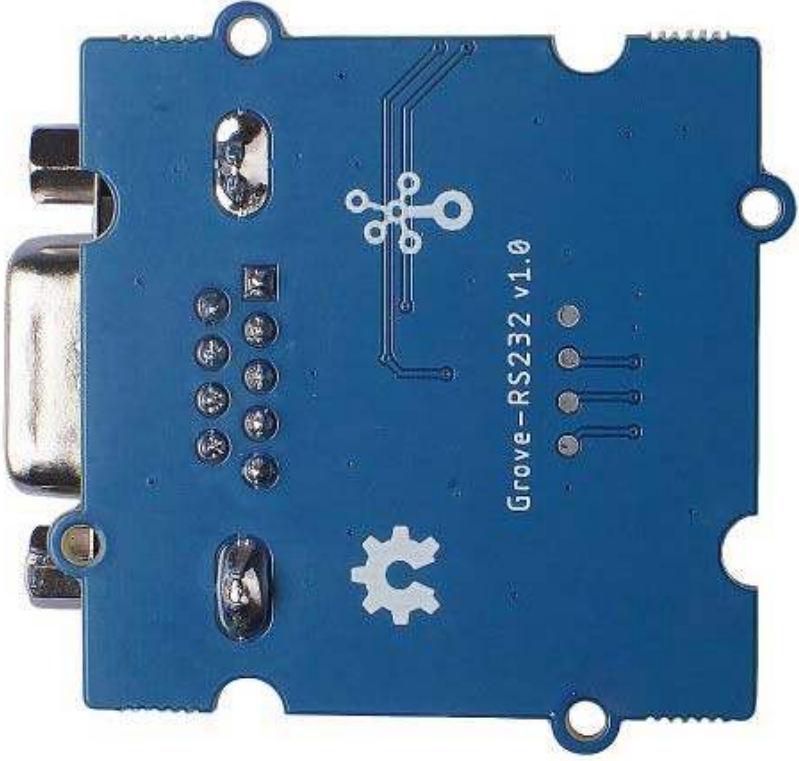
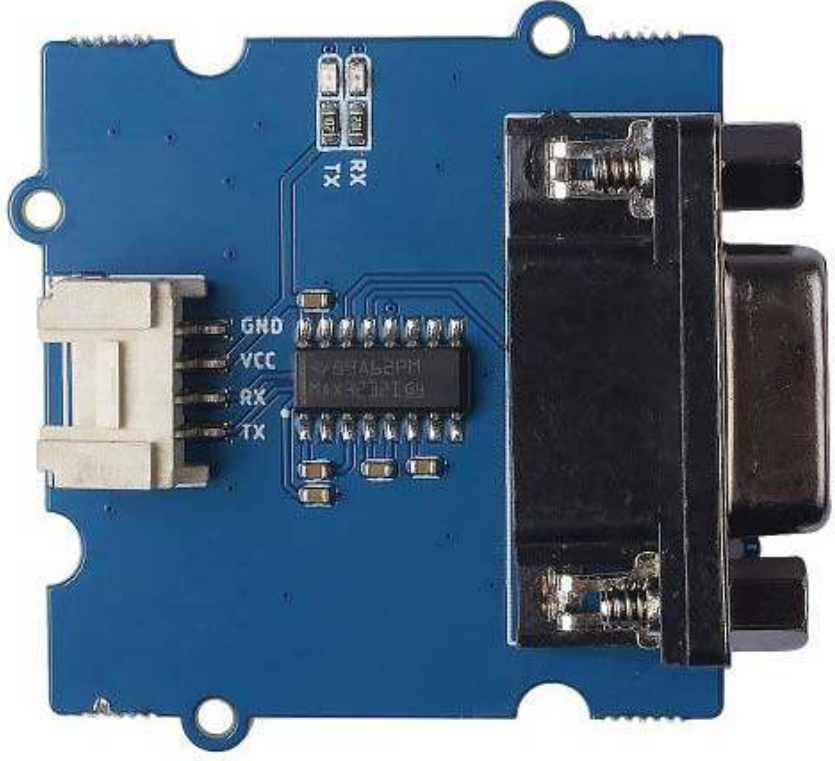
Pin Out

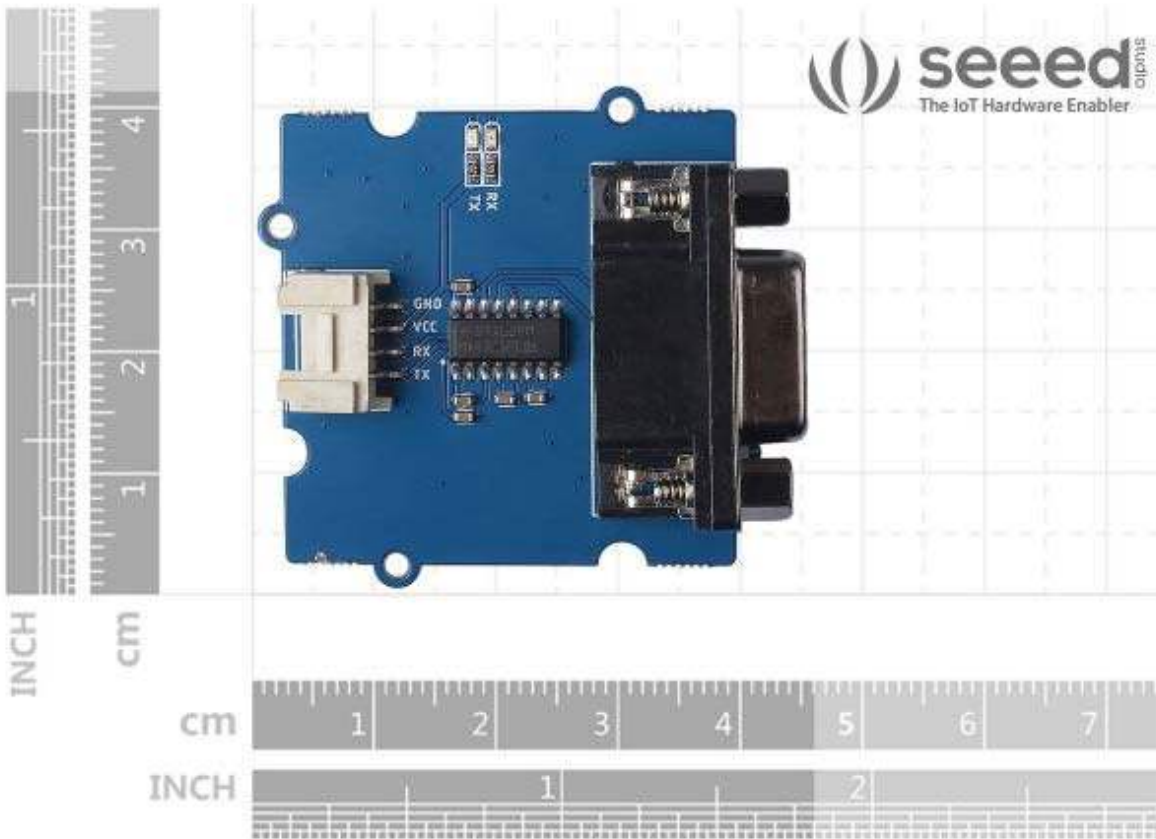


- 4** GND: connect this module to the system GND
- 3** VCC: you can use 5V or 3.3V for this module
- 2** RX: connect to the device **TX**
- 1** TX: connect to the device **RX**

ECCN/HTS

ECCN	EAR99
HSCODE	8517709000
USHSCODE	85177000
UPC	841454121947





<https://www.seeedstudio.com/Grove-RS232-P-2852.html/9-16-19>