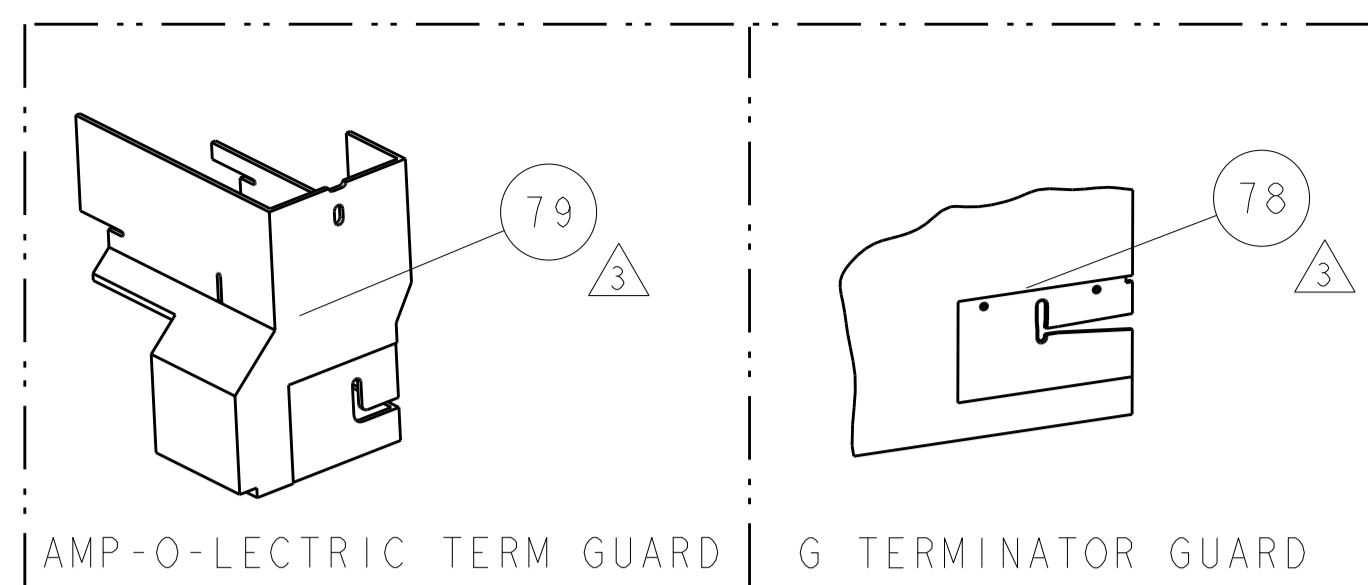
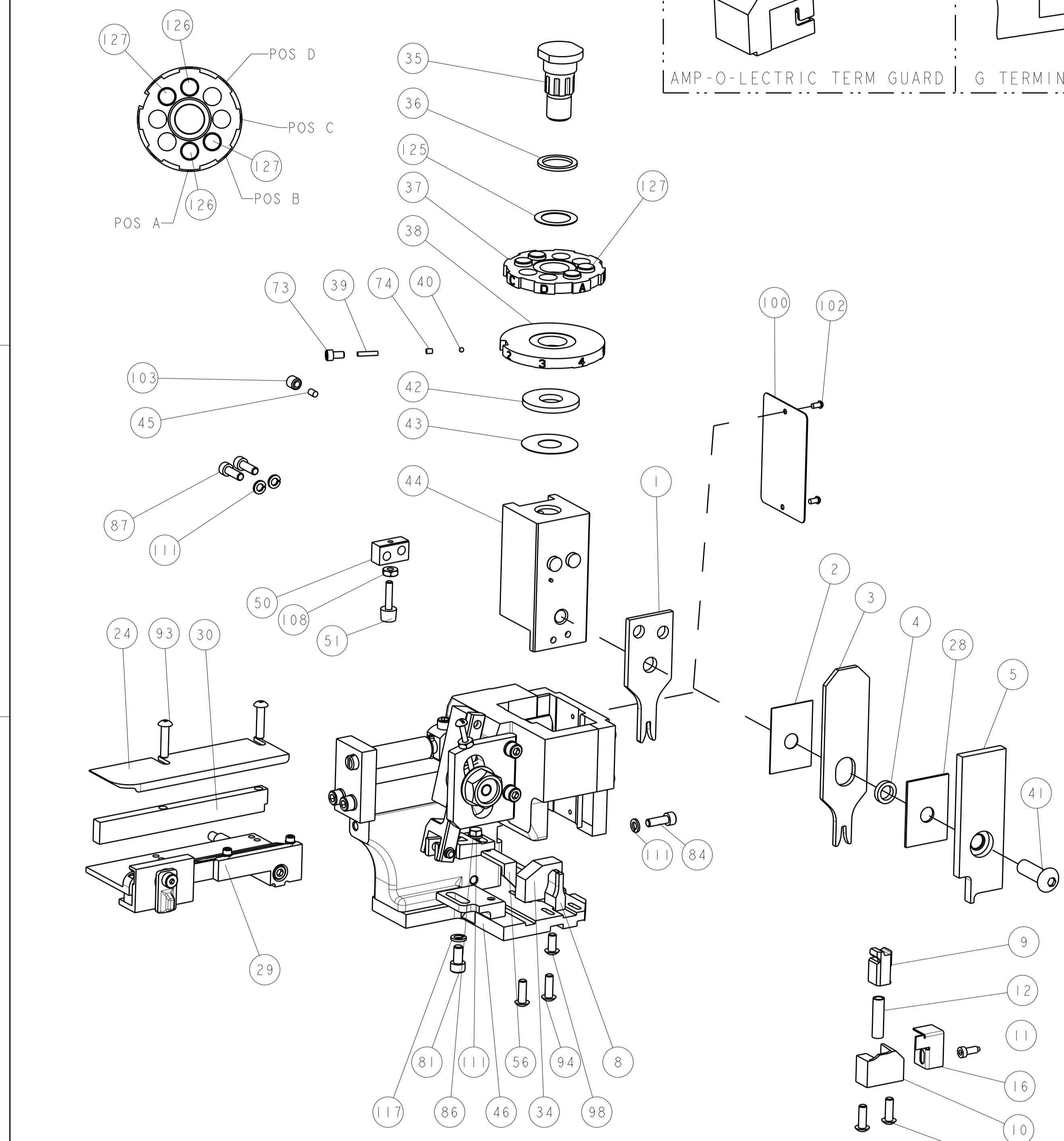


THIS DRAWING IS UNPUBLISHED.	RELEASED FOR PUBLICATION			
COPYRIGHT 20 BY TYCO ELECTRONICS CORPORATION. ALL RIGHTS RESERVED.				
PART NUMBER	REV	FIRST USED	POWER UNIT	FEED TYPE
1385838-1	B	122500-1	LEADMAKER	POST FEED
1385838-2	B	565435-5	BENCH MODEL K	PRE FEED
1385838-3	B	354500-1	BENCH MODEL G	PRE FEED



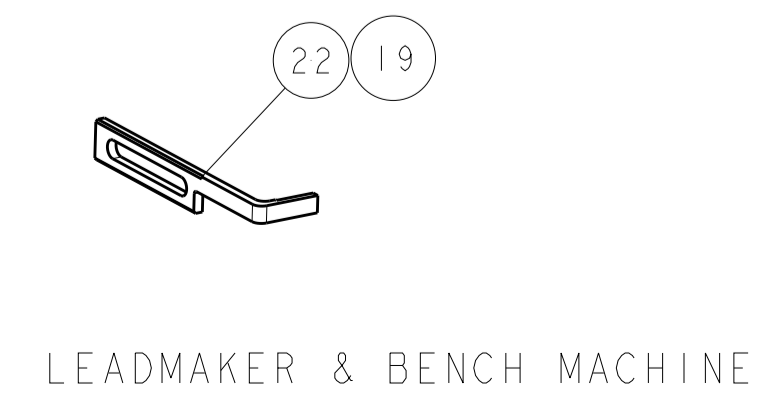
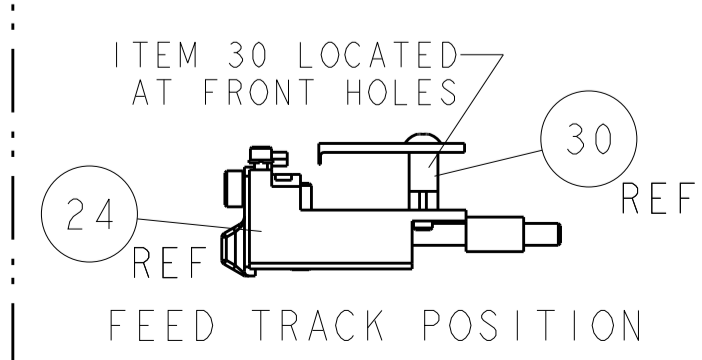
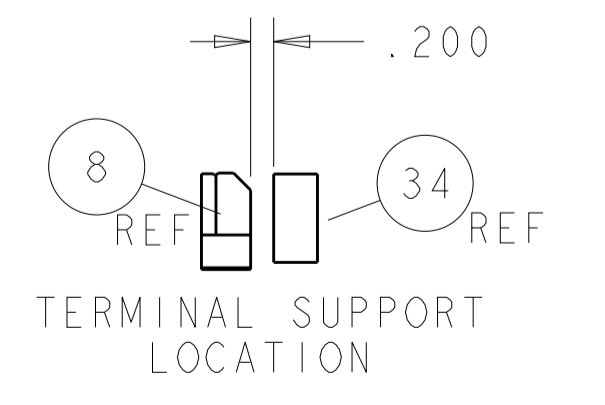
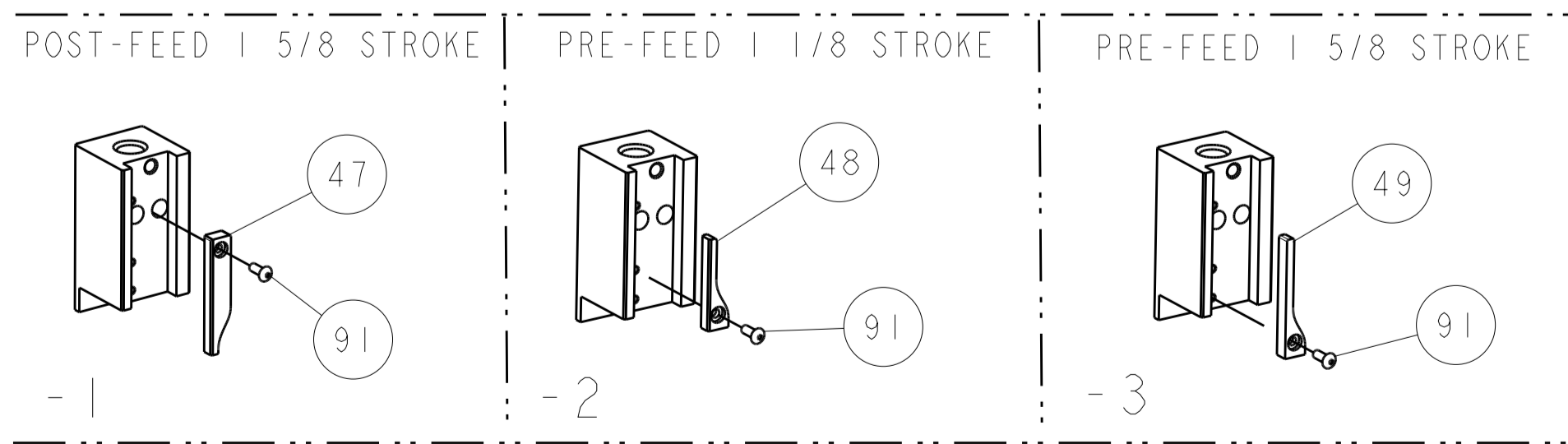
TERMINAL NAME: NSF-0.3				
TE PN	MFR PN	MITSUBISHI TERMINAL AND CRIMP SPECS		
1642755-1	MT095-94280			
		PAD LTR	CRIMP HEIGHT	WIRE SIZE
-	-	A	.053±.002[1.35±0.05mm]	1.25 mm2
-	-	B	.045±.002[1.14±0.05mm]	0.85 mm2
-	-	C	-	-
-	-	D	-	-
		CRIMP	SIZE	TYPE
SEAL PN.	-	WIRE	.092 [2.34mm]	F
-	-	INSUL	.112 [2.84mm]	F
		FEED	APPL INSTRUCTIONS	SET UP GAGE
WIRE STRIP LENGTH	TERM APPL SPEC	.591	408-8040	458637-1
177-.216	NONE			

LOC	DIST	REV	DATE	BY	CHK	APVD
A	66	A	22OCT2004	LG	TE	
		A1	15JUN2006	MY	GB	
		B	16AUG2010	MY	TE	
		B1	27MAR2015	JH	JT	



- △ RECOMMENDED SPARE PARTS
- △ GREASE LIGHTLY
- △ GUARD MUST BE IN PLACE WHEN OPERATING APPLICATOR IN A BENCH MACHINE

-	-	-	-	-	-	129
-	-	-	-	-	-	128
2	2	2	-	4-354779-0	PIN, WIRE DISC, .3190	127
2	2	2	-	2-354779-4	PIN, WIRE DISC, .3110	126
1	1	1	-	986950-1	WASHER, FLAT PRECISION	125
1	1	1	-	217238-1	GENERAL INSTRUCTION PKG	124
1	1	1	-	4088040	SF APPL INST 408-8040	123
-	-	-	-	-	-	122
-	-	-	-	-	-	121
-	-	-	-	-	-	120
-	-	-	-	-	-	119
-	-	-	-	-	-	118
1	1	1	-	21024-5	WASHER, SPRG LOCK, REG NO 10	117
-	-	-	-	-	-	116
-	-	-	-	-	-	115
-	-	-	-	-	-	114
-	-	-	-	-	-	113
-	-	-	-	-	-	112
4	4	4	-	21024-4	WASHER, SPRG LOCK, REG NO 8	111
-	-	-	-	-	-	110
-	-	-	-	-	-	109
1	1	1	-	21018-5	NUT, HEX, REG 6-32	108
-	-	-	-	-	-	107
-	-	-	-	-	-	106
-	-	-	-	-	-	105
-	-	-	-	-	-	104
1	1	1	-	21009-2	SCR, SET, SELF LOCKING 1/4-20 X .250	103
2	2	2	-	21017-2	SCREW, DRIVE	102
-	-	-	-	-	-	101
1	1	1	-	461264-1	PLATE, IDENTIFICATION	100
-	-	-	-	-	-	99
1	1	1	-	22733-8	SCR, BHSC, SELF-LOCKING, 8-32 X .375	98
-	-	-	-	-	-	97
-	-	-	-	-	-	96
-	-	-	-	-	-	95
4	4	4	-	2-21002-2	SCR, BTN SKT HD CAP 8-32 X .500	94
2	2	2	-	2-21002-4	SCR, BTN SKT HD CAP 8-32 X .750	93
-	-	-	-	-	-	92
1	1	1	-	1-21002-7	SCR, BTN SKT HD CAP 6-32 X .375	91
-	-	-	-	-	-	90
-	-	-	-	-	-	89
-	-	-	-	-	-	88
-	-	-	-	-	-	87
2	2	2	-	2-21000-7	SCR, SKT HD CAP 8-32 X .500	86
1	1	1	-	2-22603-0	SCR, HEX HD CAP 8-32 X .312	85
-	-	-	-	-	-	84
1	1	1	-	2-21000-7	SCR, SKT HD CAP 8-32 X .500	83
-	-	-	-	-	-	82
-	-	-	-	-	-	81
1	1	1	-	3-21000-4	SCR, SKT HD CAP 10-32 X .375	80
-	-	-	-	-	-	79
-	REF	-	-	455749-1	GUARD WINDOW	78
-	REF	-	-	679532-1	INSERT, GUARD	77
-	-	-	-	-	-	76
-	-	-	-	-	-	75
-	-	-	-	-	-	74
1	1	1	-	690603-1	SPRING ASSIST AMP-O-MATOR APPLICATOR	74
-3	-2	-1	U/M	PART NO	DESCRIPTION	ITEM NO



23030-1	SCR, SKT HD CAP 6-32 x .25	73
-	-	72
-	-	71
-	-	70
-	-	69
-	-	68
-	-	67
-	-	66
-	-	65
-	-	64
-	-	63
-	-	62
-	-	61
-	-	60
-	-	59
-	-	58
-	-	57
458537-2	PAWL, FEED	56
-	-	55
-	-	54
-	-	53
-	-	52
811242-2	BUMPER, HOLD DOWN	51
690753-1	SPACER, TONKER	50
690602-6	CAM, PRE FEED, 1 5/8	49
690602-5	CAM, POST FEED, 1 1/8	48
690501-4	CAM, PRE-FEED 1 5/8	47
459456-1	APPL. BASIC SUB ASSEMBLY	46
690191-1	PLUG, NYLON	45
455673-1	RAM	44
690125-1	SHIM SUB-ASSY	43
690124-1	WASHER, RAM (.115)	42
7-21002-9	SCR, BTN SKT HD CAP 5/16-24 X 1.00	41
23241-6	BALL, STEEL	40
690170-1	SPRING, COMPRESSION	39
1-690142-1	DISC, INSULATION	38
354777-1	WIRE DISC, ASSEMBLY	37
22480-5	SPRING, COMPRESSION	36
690212-1	POST, RAM	35
690786-1	TERMINAL SUPPORT	34
-	-	33
-	-	32
-	-	31
1320908-1	SPACER, STRIP GUIDE	30
1633091-1	ASSEMBLY, STRIP GUIDE	29
1-455888-0	SPACER, CRIMPER	28
-	-	27
-	-	26
-	-	25
-	-	24
1320928-1	STRIP GUIDE	23
-	-	22
690472-2	STRIPPER	21
-	-	20
-	-	19
691353-1	STRIPPER	18
-	-	17
318563-1	GUARD, FRONT CHIP	16
-	-	15
-	-	14
-	-	13
3-22280-3	SPRING, COMPRESSION	12
690461-1	STOP, SHEAR	11
690459-1	SHEAR HOLDER, FRONT	10
454276-1	FLOATING SHEAR, FRONT	9
1-1633116-3	ANVIL, COMBINATION	8
-	-	7
-	-	6
1-455889-4	DEPRESSOR, SHEAR	5
238011-9	BLOCK, CRIMPER SPACER	4
1-1424909-1	CRIMPER, INSULATION F	3
455888-4	SPACER, CRIMPER	2
1-1673600-4	CRIMPER, WIRE	1

08OCT2004	08OCT2004	TE Connectivity	Harrisburg, PA 17105-3608
TE	TE Connectivity	Harrisburg, PA 17105-3608	
DIMENSIONS: INCHES		TOLERANCES UNLESS OTHERWISE SPECIFIED:	
0 PLC	±	1 PLC	±0.1
2 PLC	±0.01	3 PLC	±0.001
4 PLC	±0.0001	ANGLES	±
MATERIAL:		FINISH:	
DWN		CHK	
APVD		NAME	
PRODUCT SPEC		APPLICATION SPEC	
SIZE	CAGE CODE	DRAWING NO	RESTRICTED TO
A1	00779	1385838	
CUSTOMER ACCESSIBLE PRODUCTION DRAWING		SCALE	SHEET 1 OF 1
		3:5	REV