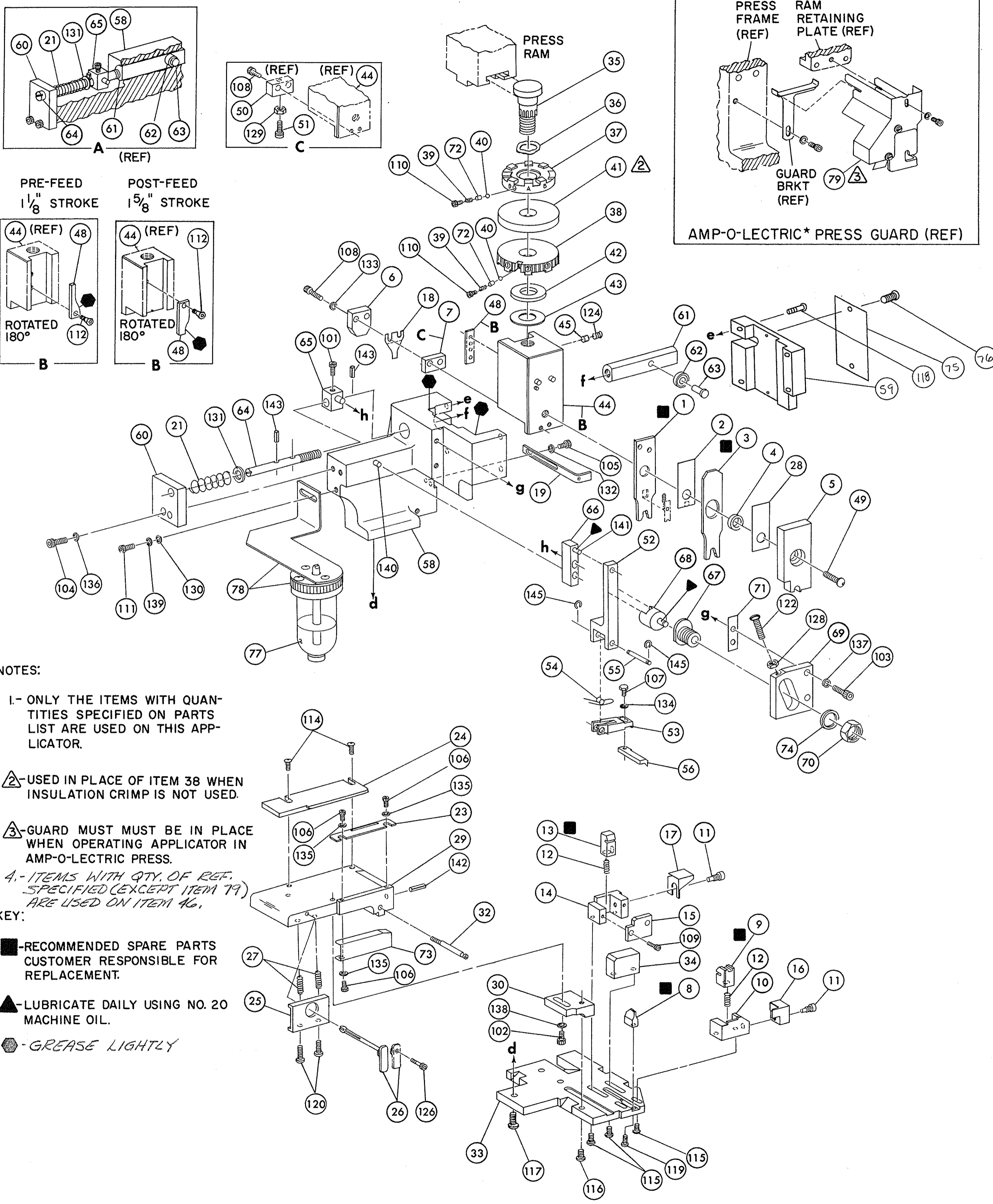


THIS IS A CONTROLLED DOCUMENT.



- NOTES:**
- I.- ONLY THE ITEMS WITH QUANTITIES SPECIFIED ON PARTS LIST ARE USED ON THIS APPLICATOR.
  - △- USED IN PLACE OF ITEM 38 WHEN INSULATION CRIMP IS NOT USED.
  - ▲- GUARD MUST BE IN PLACE WHEN OPERATING APPLICATOR IN AMP-O-LECTRIC PRESS.
  - 4.- ITEMS WITH QTY. OF REF. SPECIFIED (EXCEPT ITEM 19) ARE USED ON ITEM 46.
- KEY:**
- RECOMMENDED SPARE PARTS CUSTOMER RESPONSIBLE FOR REPLACEMENT.
  - ▲- LUBRICATE DAILY USING NO. 20 MACHINE OIL.
  - GREASE LIGHTLY

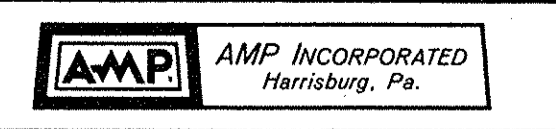
| REF. | QTY | PART NO    | DESCRIPTION                                      | ITEM NO | REF. | QTY | PART NO    | DESCRIPTION                   | ITEM NO |
|------|-----|------------|--|---------|------|-----|------------|-------------------------------|---------|
|      |     | 21045-3    | RING, RETAINING 'C' (.187 DIA) FEED FINGER PIN   | 145     |      |     | 454220-1   | CAP, HOUSING                  | 59      |
|      |     | 5-21028-1  | PIN, SLOT SPR (.125 DIA X .50) ADJ ROD           | 144     |      |     | 454485-1   | HOUSING                       | 58      |
|      |     | 4-21028-0  | PIN, SLOT SPR (.093 DIA X .75) STR G PLATE       | 143     |      |     |            |                               | 57      |
|      |     | 1-21030-1  | PIN, DOWEL (.187 DIA X .50) LEVER                | 142     |      |     | 690542-2   | PAWL, FEED                    | 56      |
|      |     | 1-21030-6  | PIN, DOWEL (.187 DIA X 1.25) HOUSING             | 141     |      |     | 240624-1   | PIN, FEED FINGER              | 55      |
|      |     | 21024-5    | WASHER, LOCK (NO 10) LUB ASSY                    | 140     |      |     | 691499-1   | SPRING, FEED FINGER           | 54      |
|      |     | 21024-5    | WASHER, LOCK (NO 10) STRIP GUIDE ADJ BLOCK       | 139     |      |     | 690541-1   | FINGER, FEED                  | 53      |
|      |     | 21024-5    | WASHER, LOCK (NO 10) ADJ PLATE                   | 138     |      |     | 455679-1   | LEVER, TERMINAL FEED ARM      | 52      |
|      |     | 21024-5    | WASHER, LOCK (NO 10) FEED GUIDE ROD              | 137     |      |     |            | BUMPER, HOLDDOWN              | 51      |
|      |     | 21057-2    | WASHER, LOCK (NO 4) FRONT STRIP GUIDE            | 136     |      |     |            | SPACER, TONKER                | 50      |
|      |     | 21024-4    | WASHER, LOCK (NO 8) FEED FINGER                  | 135     |      |     | 7-21002-9  | BOLT, CRIMPER                 | 49      |
|      |     | 21024-4    | WASHER, LOCK (NO 8) DEPRESSOR                    | 134     |      |     | 690501-4   | CAM POST-FEED 1/8 STROKE      | 48      |
|      |     | 21024-4    | WASHER, LOCK (NO 8) STRIPPER                     | 133     |      |     |            |                               | 47      |
|      |     | 21899-4    | WASHER, FLAT (5/16 DIA) SCREW ADJ                | 132     |      |     | 459456-1   | APPLICATOR, BASIC (SUB ASSY)  | 46      |
|      |     | 21899-2    | WASHER, FLAT (NO 10) LUB ASSY                    | 131     |      |     | 690191-1   | PLUG, NYLON                   | 45      |
|      |     | 21068-5    | NUT, HEX MACH (6-32) HOLDDOWN                    | 130     |      |     | 455673-1   | RAM                           | 44      |
|      |     | 21068-5    | NUT, HEX MACH (6-32) FEED ADJ                    | 129     |      |     | 690125-1   | WASHER, LAMINATED             | 43      |
|      |     |            |  | 128     |      |     | 690124-1   | WASHER, RAM                   | 42      |
|      |     |            |  | 127     |      |     |            | DISC, SPACER                  | 41      |
|      |     | 22353-8    | SCR, SHLD. (.187 DIA X .250 LG) DRAG LEVER       | 126     |      |     | 23241-6    | BALL, STEEL                   | 40      |
|      |     |            |  | 125     |      |     | 690170-1   | SPRING, COMPRESSION           | 39      |
|      |     | 21009-2    | SCR, SKT SET (1/4-20 X .25) (LOC-WEL) RAM        | 124     |      |     | 690142-1   | DISC, INSULATION              | 38      |
|      |     |            |  | 123     |      |     | 9-690692-4 | DISC, WIRE                    | 37      |
|      |     | 3-21064-2  | SCR, RD HD MACH (6-32 X 1.50) FEED ADJ           | 122     |      |     | 22480-5    | WASHER, SPRING                | 36      |
|      |     |            |  | 121     |      |     | 690212-1   | POST, RAM                     | 35      |
|      |     | 2-21002-9  | SCR, BUT HD SKT CAP (10-32 X .75) DRAG           | 120     |      |     |            | SUPPORT, TERMINAL             | 34      |
|      |     | 22733-8    | SCR, BUT HD SKT CAP (8-32 X .38) (LOC-WEL) ANVIL | 119     |      |     | 455675-1   | PLATE, BASE                   | 33      |
|      |     | 2-21002-9  | SCR, BUT HD SKT CAP (10-32 X .75) CAP            | 118     |      |     | 690432-3   | SCREW, ADJUSTMENT             | 32      |
|      |     | 1-24073-9  | SCR, BUT HD SKT CAP (1/4-20 X .75) HOUSING       | 117     |      |     |            |                               | 31      |
|      |     | 2-21002-7  | SCR, BUT HD SKT CAP (10-32 X .50) SG ADJ BLOCK   | 116     |      |     | 455689-1   | BLOCK, STRIP GUIDE ADJ        | 30      |
|      |     | 2-21002-2  | SCR, BUT HD SKT CAP (8-32 X .50) SHEAR           | 115     |      |     | 455671-1   | PLATE, STRIP GUIDE            | 29      |
|      |     | 2-21002-2  | SCR, BUT HD SKT CAP (8-32 X .50) R STRIP GUIDE   | 114     |      |     | 455888-5   | SPACER, FRONT SHEAR DEPRESSOR | 28      |
|      |     |            |  | 113     |      |     | 1-22284-0  | SPRING, DRAG                  | 27      |
|      |     | 2-21003-0  | SCR, FLAT HD SKT CAP (6-32 X .50) CAM            | 112     |      |     | 690546-1   | LEVER, DRAG RELEASE           | 26      |
|      |     | 3-21000-4  | SCR, SKT HD CAP (10-32 X .38) LUBRICATOR ASSY    | 111     |      |     | 240792-1   | DRAG, STOCK                   | 25      |
|      |     | 23030-1    | SCR, SKT HD CAP (6-32 X .25) (LOC-WEL) CP DISC   | 110     |      |     | 690504-4   | GUIDE STRIP (REAR)            | 24      |
|      |     |            |  | 109     |      |     | 690438-1   | GUIDE, STRIP (FRONT)          | 23      |
|      |     |            |  | 108     |      |     |            |                               | 22      |
|      |     | 2-22603-0  | SCR, SKT HD CAP (8-32 X .31) DEPRESSOR           | 107     |      |     | 4-22284-9  | SPRING, FEED RETURN           | 21      |
|      |     | 1-21000-3  | SCR, SKT HD CAP (4-40 X .25) F STRIP GUIDE       | 106     |      |     |            |                               | 20      |
|      |     | 2-21000-7  | SCR, SKT HD CAP (8-32 X .50) STRIPPER            | 105     |      |     | 690472-2   | STRIPPER                      | 19      |
|      |     | 3-21000-7  | SCR, SKT HD CAP (10-32 X .75) FEED ROD GUIDE     | 104     |      |     |            | HOLDER, TERMINAL              | 18      |
|      |     | 3-21000-6  | SCR, SKT HD CAP (10-32 X .62) FEED ADJ BLOCK     | 103     |      |     |            | GUARD, CHIP (REAR)            | 17      |
|      |     | 3-21000-4  | SCR, SKT HD CAP (10-32 X .38) SG ADJ BLOCK       | 102     |      |     | 691667-3   | GUARD, CHIP (FRONT)           | 16      |
|      |     | 3-21000-4  | SCR, SKT HD CAP (10-32 X .38) PIVOT BLOCK        | 101     |      |     |            | PLATE, SHEAR (REAR)           | 15      |
|      |     | 455749-1   | GUARD, WINDOW                                    | 79      |      |     |            | HOLDER, SHEAR (REAR)          | 14      |
|      |     | 1-465184-0 | LUBRICATOR ASSY                                  | 78      |      |     |            | SHEAR, FLOAT (REAR)           | 13      |
|      |     |            | OIL, LUBRICATING                                 | 77      |      |     | 5-22280-0  | SPRING, SHEAR                 | 12      |
|      |     | 21017-2    | SCR, DRIVE (#2 X .19) ID PLATE                   | 76      |      |     | 690461-1   | STOP, SHEAR                   | 11      |
|      |     | 461264-1   | PLATE, ID  | 75      |      |     | 690459-1   | HOLDER, SHEAR (FRONT)         | 10      |
|      |     | 458109-1   | WASHER, SPECIAL                                  | 74      |      |     | 454276-2   | SHEAR, FLOAT (FRONT)          | 9       |
|      |     | 454877-3   | PLATE, STRIP GUIDE COVER                         | 73      |      |     | 2-690471-1 | ANVIL                         | 8       |
|      |     | 690603-1   | SPRING, ASSIST                                   | 72      |      |     |            | SPACER, DEPRESSOR (REAR)      | 7       |
|      |     | 690517-1   | SPACER   | 71      |      |     |            | DEPRESSOR, SHEAR (REAR)       | 6       |
|      |     | 22594-8    | NUT, HEX   | 70      |      |     | 1-455889-4 | DEPRESSOR, SHEAR (FRONT)      | 5       |
|      |     | 240628-1   | PLATE, ADJUSTMENT                                | 69      |      |     | 238011-7   | SPACER, TUBULAR, INS CRIMPER  | 4       |
|      |     | 240626-1   | SHAFT, PIVOT                                     | 68      |      |     | 4-456134-3 | CRIMPER, INSULATION           | 3       |
|      |     | 240633-1   | BUSHING  | 67      |      |     | 1-455888-0 | SPACER, CRIMPER               | 2       |
|      |     | 455680-1   | LEVER, INTERMEDIATE                              | 66      |      |     | 1-456406-2 | CRIMPER, WIRE                 | 1       |
|      |     | 240629-1   | BLOCK, PIVOT                                     | 65      |      |     |            |                               |         |
|      |     | 240632-2   | SCREW, ADJUSTMENT FEED ROD                       | 64      |      |     |            |                               |         |
|      |     | 240659-3   | PIN, CAM ROLLER                                  | 63      |      |     |            |                               |         |
|      |     | 240658-1   | ROLLER, CAM                                      | 62      |      |     |            |                               |         |
|      |     | 454398-2   | ROD, FEED  | 61      |      |     |            |                               |         |
|      |     | 454178-1   | GUIDE, FEED ROD                                  | 60      |      |     |            |                               |         |

| REMARKS                      | NO             | REV            |
|------------------------------|----------------|----------------|
| APPL USED ON MACHINE PART NO | MACH SERIAL NO | DISTRIBUTION   |
| CUSTOMER NAME                | APPL SERIAL NO | ORIGINAL       |
| ADDRESS                      | PURCHASE ORDER | CUSTOMER COPY  |
| CITY                         | ENG APP        | FIELD ENG COPY |

| CRIMPING DATA                  |                  |           |                   | APPLICATOR WILL APPLY |  |
|--------------------------------|------------------|-----------|-------------------|-----------------------|--|
| PAD LTR                        | CRIMP HEIGHT     | WIRE SIZE | WIRE STRIP LENGTH | 69054                 |  |
| A                              | .078             | 14        |                   |                       |  |
| B                              | .067             | 16        |                   |                       |  |
| C                              | .060             | 18        |                   |                       |  |
| D                              | NOT USED         |           |                   |                       |  |
| CRIMP                          | SIZE             | TYPE      | FEED              | APPL INST             |  |
| WIRE                           | .090             | F         | .760              | A18040                |  |
| INSUL                          | .180             | F         |                   |                       |  |
| WIRE RANGE                     | INSULATION RANGE |           | PRESS NO          |                       |  |
| 18-14                          | .120-.170        |           |                   |                       |  |
| REMARKS<br>POST-FEED AMPOMATOR |                  |           |                   |                       |  |

I.D. PLATE (REF) = 461264-1

| REV | DESCRIPTION       | DATE    | BY | CHKD | REL       | LOC     | NO  | REV |
|-----|-------------------|---------|----|------|-----------|---------|-----|-----|
| F   | ECN 0150-0402-04  | 4/18/94 | WJ | 3-04 | 450637-1  | 10-1    | 158 |     |
| V   | ECN 0150-5402-94  | 4/18/94 | WJ | 3-04 | DR7-18-75 | APP     | 211 |     |
| D   | 0150-5384-94      | 4/18/94 | WJ | 3-04 | DR7-18-75 | APP     | 211 |     |
| C   | ECN A157588       | 4/18/94 | WJ | 3-04 | CHK       | 7-21-94 | 158 |     |
| B   | REV PER ECN 23913 | 4/18/94 | WJ | 3-04 | CHK       | 7-21-94 | 158 |     |
| A   | REV ITEM 37 R2346 | 4/18/94 | WJ | 3-04 | CHK       | 7-21-94 | 158 |     |



DIST 66

\* Trademark of AMP Incorporated