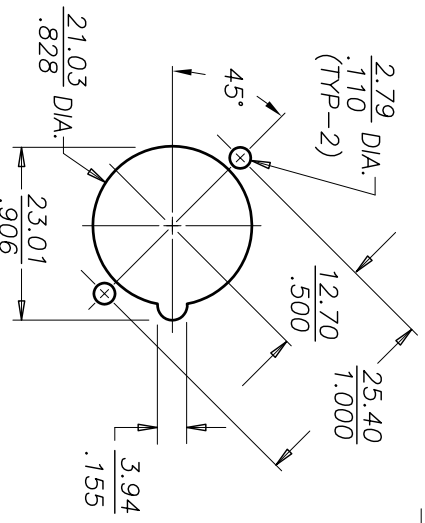
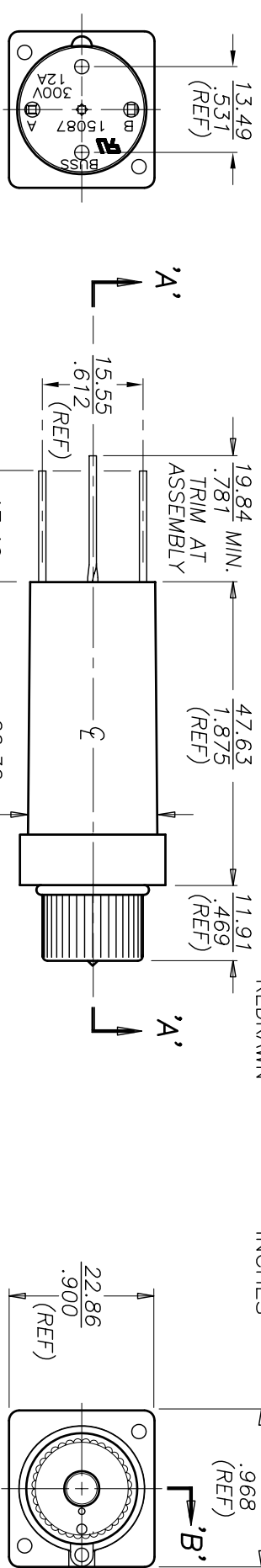
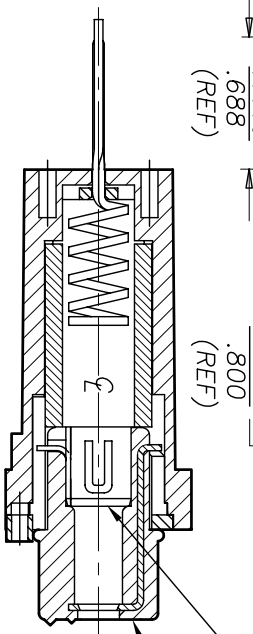


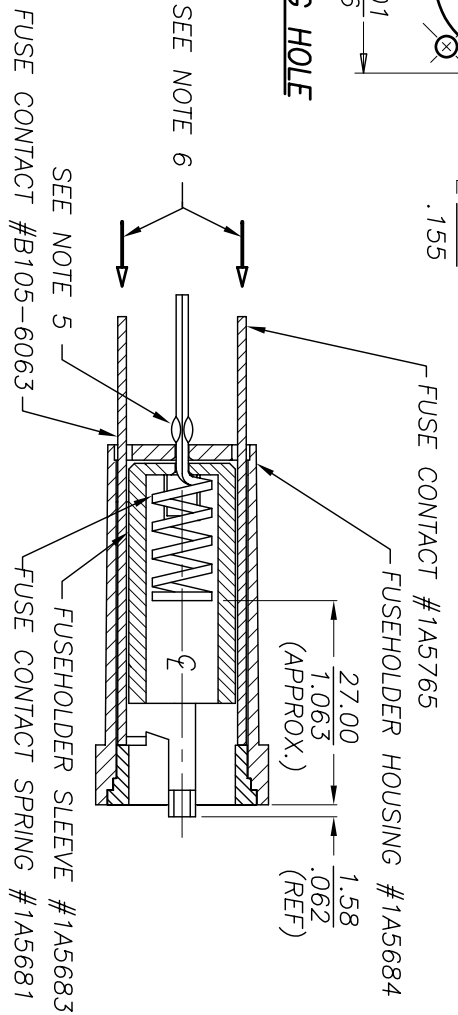
56 U J		COPYRIGHT Cooper Industries, Inc. This is an unpatented design. The disclosure of this work is the property of Cooper Industries, Inc. It is not for public disclosure. Possession of the information does not constitute an authorized reproduction or use of the information. UNAUTHORIZED REPRODUCTION OR USE OF THE INFORMATION IS LOANED OR UPON REQUEST.	SCALE 1X METRIC TOLERANCES TO BE: ±.13mm ±.005" ANGULAR ±2°
REVISED & REDRAWN		METRIC (mm) INCHES	(O) INDICATES CRITICAL DIMENSION OR FEATURE 55197



SECTION 'A'-'A'



MOUNTING HOLE



SEE NOTE 6
 SEE NOTE 5
 SECTION 'B'-'B'
 (KNOB OMITTED FOR CLARITY)

CONTACT #B105-6065
 FUSEHOLDER CAP ASSEMBLY #1A5219-01N
 SCREW #B002-6228 (SEE NOTE 2) (D)
 PACKAGING SPECIFICATION #1P0510

- NOTES:
- 1) FUSEHOLDER CAP ASSEMBLY AND FUSEHOLDER HOUSING ASSEMBLY ARE SHOWN ASSEMBLED FOR REFERENCE ONLY. CAP AND HOUSING WILL BE SUPPLIED, NOT ASSEMBLED, PER SUB-ASSEMBLY PART NUMBERS.
 - 2) TWO (2) SCREWS, #B002-6228, SHIPPED BULK WITH EACH ASSEMBLY.
 - 3) U.L. RECOGNIZED UNDER MODEL NO. 15087, FILE NO. E37864.
 - 4) ELECTRICAL RATING: 12 AMPS - 300 VOLTS.
 - 5) PLAINISH TERMINAL, SO SPRING WILL NOT FALL OUT (AT ASSEMBLY).
 - 6) FUSEHOLDER SLEEVE SHALL NOT SEPARATE FROM FUSEHOLDER HOUSING WHEN SUBJECTED TO A 30 LB. FORCE IN THE DIRECTION INDICATED.