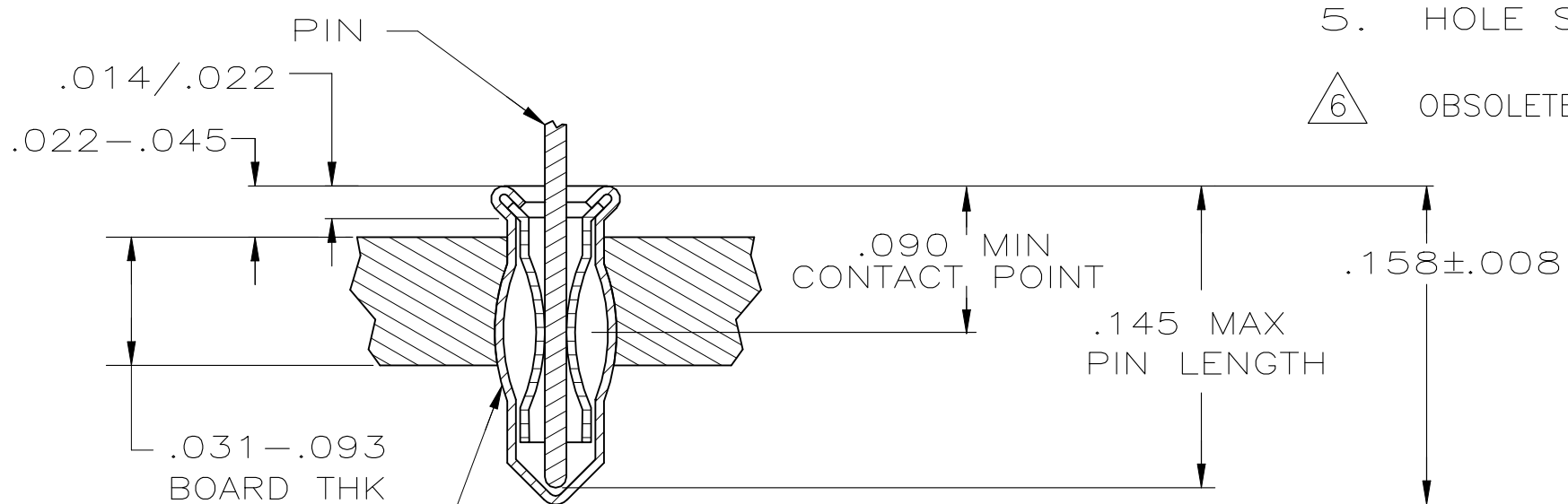
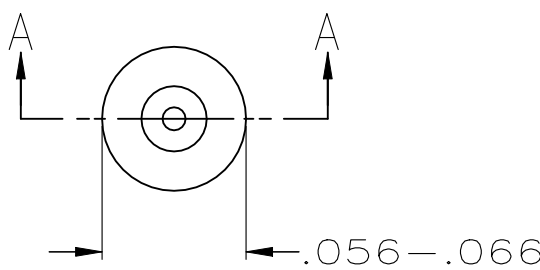


REVISIONS					
P	LTR	DESCRIPTION	DATE	DWN	APVD
	A2	REVISED PER ECN-22-182178	02NOV2022	PT	SZ

1. MATERIAL:  
EYELET - COPPER PER ASTM B 152  
SPRING - BERYLLIUM COPPER PER ASTM B 194
2. TIN PLATE PER ASTM-B-545 .000100 MIN THICK
3. GOLD PLATE PER ASTM B 488 .000030 MIN THICK ON CONTACT AREA.
4. TO INSURE 1/2 OZ MIN RETENTION DO NOT EXCEED .004 DIFFERENCE IN PIN DIA WHEN CHANGING TO A SMALLER DIA PIN
5. HOLE SIZE FOR HAND INSERTION 0.043-0.046
6. OBSOLETE PARTS: OBSOLETE CIS STREAMLINING PER D.RENAUD/D.SINISI



SECTION A-A

.090-.145	.012-.018	GOLD 3	TIN 2	1-5645945-5
	.015-.021			6 5645945-5-5645945-2-5645945-1
LENGTH	DIA 3	SPRING	EYELET	PART NO
PIN		FINISH		

THIS DRAWING IS A CONTROLLED DOCUMENT.		DWN G. ATTADIA - 20APR2005	<b>STE</b> TE Connectivity		
DIMENSIONS: INCHES		CHK J. HAVENER 20APR2005			
TOLERANCES UNLESS OTHERWISE SPECIFIED:		APVD J. HAVENER 20APR2005	NAME MINIATURE SPRING SOCKET ASSEMBLY SERIES 1 SHORT		
0 PLC ± -		PRODUCT SPEC 108-14008	DRAWING NO		
1 PLC ± -		APPLICATION SPEC 114-13152	SIZE A3	CAGE CODE 00779	RESTRICTED TO
2 PLC ± -		WEIGHT 0.000000	DRAWING NO C-5645945		
3 PLC ± -		CUSTOMER DRAWING	SCALE NTS	SHEET 1 OF 1	REV A2
4 PLC ± -					
ANGLES ± -					
MATERIAL NOTE 1		FINISH SEE TABLE			