


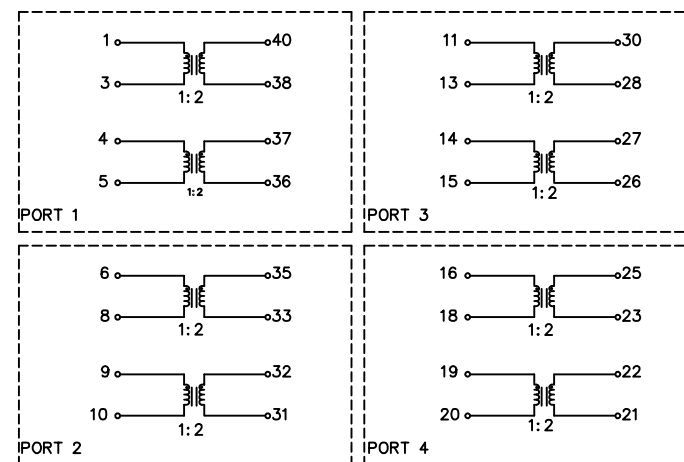
ELECTRICAL CHARACTERISTICS AT +25°C UNLESS OTHER SPECIFIED
(PORT 1)

1.

NOTICE:	THIS IS A RoHS COMPLIANT COMPONENT/PRODUCT.
RoHS 	ALL ENGINEERING CHANGES MUST HAVE PRIOR APPROVAL BY THE DESIGN CENTER.
2. PLASTIC: THERMOSET PLASTIC MATERIAL WITH FLAMMABILITY RATING UL 94V-0 OR BETTER.
3. SOLDERABILITY: CONFORMS TO ANSI/J-STD-002, 245°C REFLOW PEAK TEMPERATURE PER IPC/EIA J-STD-003A
4. OPERATING TEMPERATURE: -0°C TO +70°C
5. STORAGE TEMPERATURE: -20°C TO +125°C
6. JEDEC MOISTURE: LEVEL 1.
7. DIMENSIONS ARE IN INCHES WITH THE FOLLOWING TOLERANCES:
.XX= ±.02
.XXX= ±.010

No.	PARAMETER	SPECIFICATION
1	URNS RATIO: PRI:SEC @100 KHz, 0.2 VRMS	2:1 ±2%
2	OPEN CIRCUIT INDUCTANCE @10 KHz, 0.1 VRMS	(40-38)=(37-36)=1.2 mH MIN
3	LEAKAGE INDUCTANCE (LL): @100 KHz, 0.01 OR 0.02 VRMS	0.3 uH MAXIMUM
4	C _{ww} @ 100 KHz, 0.01 VRMS	35 pF MAX
5	DCR (Pri & Sec)	(1-3)=(4-5)= 0.7 OHMS MAX (40-38)=(37-36)= 1.2 OHMS MAX
6	HIPOT (PRI TO SEC)	1500 VRMS, 60 S
7	OPEN/SHORT TEST	10 MOHM MIN

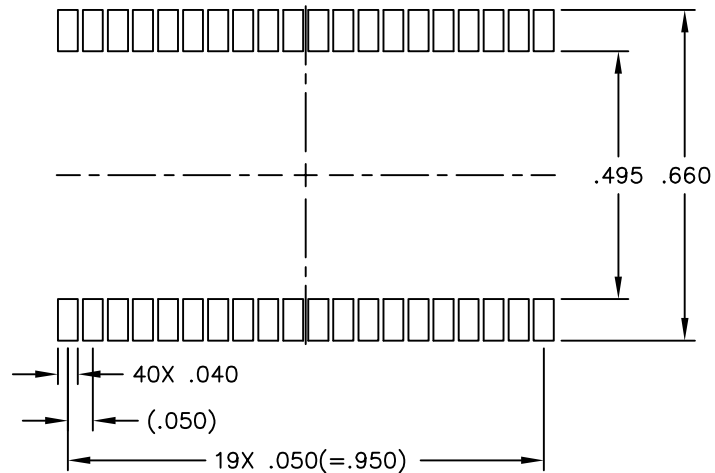
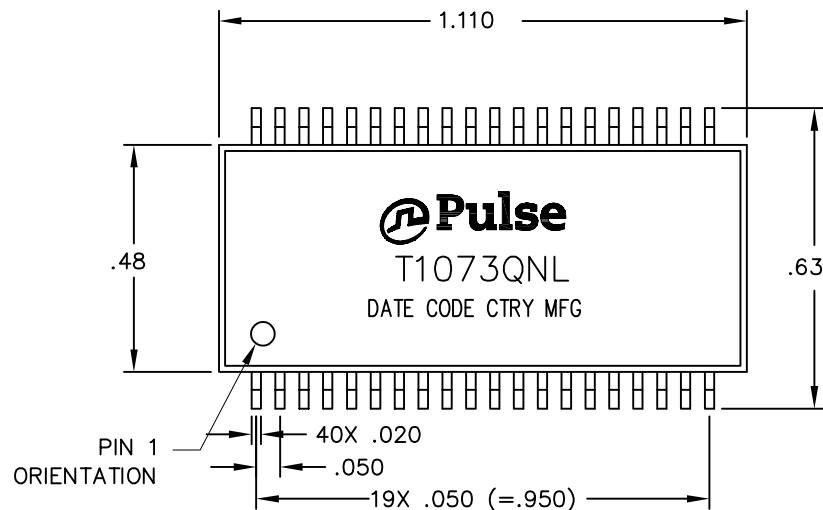
NOTE: PORT 2, 3 AND 4 HAS THE SAME ELECTRICAL CHARACTERISTICS AS PORT 1.



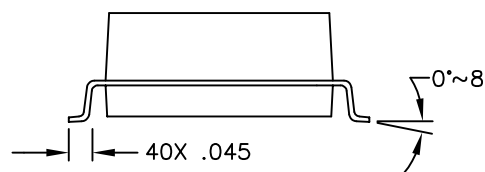
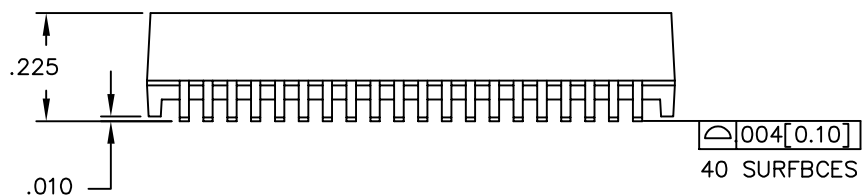
SCHEMATIC

© Copyright, 2013. Pulse Electronics Corp. All rights reserved. Drawing specifications subject to change without notice. (08/07/13)

PULSE CONFIDENTIAL & PROPRIETARY	PRODUCT DESCRIPTION	PS DRAWING	SHEET:	DWG. NO./ PART NO.	REV.
	XFMR,OCTAL,T1,TOU,ET,1: 2,OH	PS-0002.002-B	1	T1073QNL	M11



SUGGESTED LBNB PBTTERN



© Copyright, 2013. Pulse Electronics Corp. All rights reserved. Drawing specifications subject to change without notice. (08/07/13)

PULSE CONFIDENTIAL & PROPRIETARY	PRODUCT DESCRIPTION	PS DRAWING	SHEET:	DWG. NO./ PART NO.	REV.
	XFMR,OCTAL,T1,TOU,ET,1: 2,OH	PS-0002.002-B	1	T1073QNL	M11