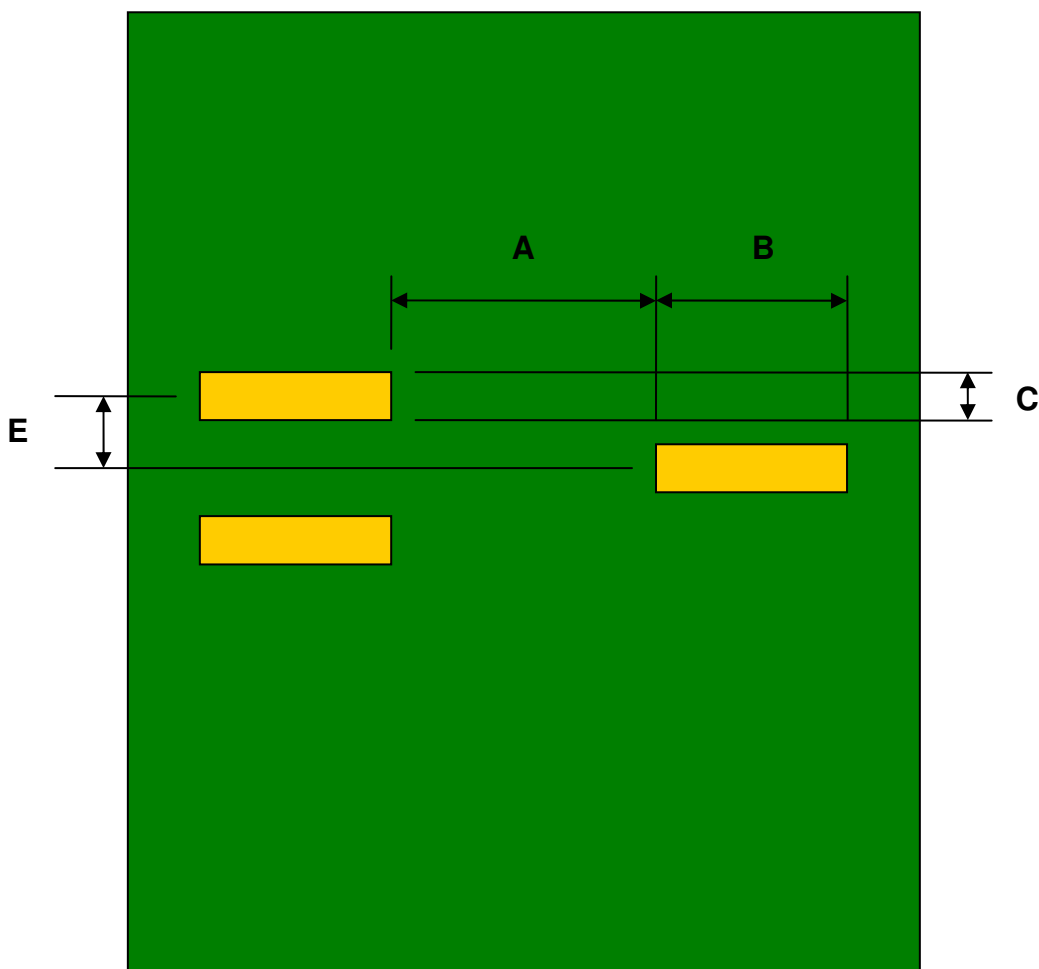


SOT-523F to DIP-4 SMT Adapter (0.5 mm pitch, 1.50 x 1.00 mm body)

REF.	DIMENSIONS					
	mm			inches		
	MIN.	TYP.	MAX.	MIN.	TYP.	MAX.
A		0.50				
B		1.50				
C		0.50				
E		0.50				
F					0.300	
G					0.100	
H					0.025	

Top View (SMT Footprint)



(Representative drawing only - not to scale)

Bottom View (DIP Pins)



(Representative drawing only - not to scale)

Side View (DIP Pins)



(Representative drawing only - not to scale)